

Trustees' Annual Report 1 April 2020 to 31 March 2021

Reg. charity number 1031498



THE ORGANISATION

Oriel Myrddin Trust is an unincorporated charitable trust.

The governing document is the scheme of 11 November 1993 registered with the Charity Commission on 16 January 1994.

The Gallery has established itself as a quality exhibition space for contemporary visual arts, craft, applied art and design. It continues to enjoy this reputation, programming exhibitions through its own initiation, in collaboration or sourcing shows available through touring. Its programmes are representative of a high quality selection of artists and makers from Wales, UK, and internationally which then links in with the Education and Community Programme.

The Gallery operates a specialist contemporary craft retail space selling work from artists and makers from Wales and beyond.

The vision and mission of the gallery are:

To operate an inclusive, accessible art gallery - engaging, challenging and enabling local, regional, national and international visitors of all ages, backgrounds and abilities to participate in the gallery's exhibitions and education programmes of fine and applied arts.

To be the centre of the development of fine and applied arts practice in Wales; a facilitator of conversations and connections, raising awareness and understanding of making, materials, design and process. To be a hub for artistic communities, connecting physically and digitally with artists, makers, users and a wider audience.

To achieve its mission it has five key aims:

To place OMG at the core of fine and applied arts development, by offering exhibitions of the highest quality, which celebrate materials and process.

To educate and engage with a wide variety of communities, always with reference to its core exhibition programme in order to raise quality and ambition

FINANCIAL REVIEW

The Trust receives core-funding support from; Carmarthenshire County Council which provides direct revenue, professional, technical and administrative support.

The Arts Council of Wales and Carmarthen Town Council who support the key objectives of The Charity in its delivery of its programme of exhibitions, events, education, projects and initiatives.

The Gallery generates its own modest trading income and received further support this year from;

Engage Cymru £750 for Oriel O Gwmpas // Oriel Everywhere Podcast series.

The Millennium Charitable Trust £2500 for The Lost Words Podcast series.

The Art Fund £10,000 for 5 ways to well being Podcast series + investment in our own podcast producing equipment, software and training.

The National Heritage Lottery Fund £10,000 for # 15 Hoelion Wyth Cymdeithas // Pillars of Society

Reserves Policy

A review of the reserves policy is in progress as The Trustees plan for the expansion of the Gallery and its associated activity arising from the capital redevelopment anticipated for 2021/22. A regular review of the Reserve is carried out as a minimum annually.

The accounts have been prepared on the going concern basis, as there is no material uncertainty related to events or conditions that may cast doubt about the ability of the Oriel Myrddin Gallery Trust Fund to continue as a going concern.

The accounts are maintained by Carmarthenshire County Council on behalf of the Trustees of Oriel Myrddin and a full statement of accounts is included as an appendix to this report.

STRUCTURE, GOVERNANCE AND MANAGEMENT

Oriel Myrddin Trust	Term	
Cllr Emllyn Schiavone CCC	01/09/17	23/08/21
<i>Chair</i>		
Angharad Jones Leefe CTC	06/03/20	05/03/24
<i>Vice Chair</i>		
Cllr Ken Lloyd CCC	24/08/17	23/08/21
Cllr Carys Jones CCC	11/11/18	10/11/22
Cllr Alan Speake CCC	14/01/21	13/01/25
Sally Moss Independent	29/04/19	02/03/23
Louise Morgan Independent	29/04/19	02/03/23
Neil Confrey Independent	29/04/19	02/03/23
Nigel Roberts Independent	01/11/19	02/12/23
Vacant Independent		

Oriel Myrddin Gallery Staff	Role
Catherine Spring	Gallery Manager
Rachel Vater	Gallery Assistant
Emma Baker	Education Officer
Emily Laurens	Community Co-ordinator
Chris Ozzard	Gallery Attendant
Gareth H Davies	Gallery Attendant
Sian Conti	Gallery Attendant
Pam Boyce	Gallery Attendant
Caitlin Davies	Gallery Attendant (casual)

Trustees meet on a bi-annual basis and at other times as convened by the Chair to monitor activity and to make and agree to strategic decisions. The Oriel Myrddin Trust is in the custodial trusteeship of Carmarthenshire County Council. Trustees are nominated by the County and Town Councils to serve a term of three years that may be renewed. Independent Trustees are nominated or approached to join the Board based on relevant skills or experience.

Carmarthenshire County Council's Senior Accountant is responsible to the Trustees and accountable for the budget management. The Gallery Manager is accountable for the general management and artistic direction to the Trust formally mediated through the Senior Cultural Services Manager. The Gallery Manager is expected to attend Trust meetings, present directly to Trustees and develop contact with the Trust Chair and Trustees. Line manager to the Gallery Manager for operational purposes resides with Senior Cultural Services Manager.

KEY FUNCTIONS OF THE BOARD

- Delivery of the Trusts' aims, ensuring that the gallery retains relevance and quality.
- Financial probity, maintaining the Trust reserves.
- Authorise expenditure from them, to ensure the premises are maintained.
- Monitor performance.
- Establish policies.
- Agree annual charging.
- Champion the gallery within the civic life structures.
- Ensure that the broad artistic direction or policy is developed and maintained.
- Monitor external assessments and performance indicators.

The Gallery Manager leads on artistic direction, with the input of staff team members. Trustees will discuss and monitor long term capital or service development strategies and the annual budget is agreed by the Trustees in principle and then delegated to officers.

Any call on Trust reserves is discussed with and authorised by the Trustees. Trustees, including the Chair, are all currently elected council members or independent. They bring a broad range of experience in many fields of public life, diplomacy, industry, legal, education, curatorship and finance. They bring sound advice when discussing the programme in assessing relevance to those beyond the immediate sector.

CAPITAL REDEVELOPMENT

At a full council meeting on 3 March 2020 Carmarthenshire County Council agreed to support the Capital Redevelopment of Oriel Myrddin Gallery by jointly funding the project, with the aid of £1m conditional grant offer made by the Arts Council of Wales.

Due to lockdown plans were put on hold. However, a trustee subgroup has been proactive during lockdown.

As part of the redevelopment, the sub group is reviewing the governance of the Gallery and its relationship with Carmarthenshire County Council by entering in to a management agreement which sets out future arrangements for revenue funding, the provision of back office support, trading activities.

The Board are also considering the proposals for entering into lease agreements for the King Street Properties currently a CCC asset.

IMPACT OF COVID-19

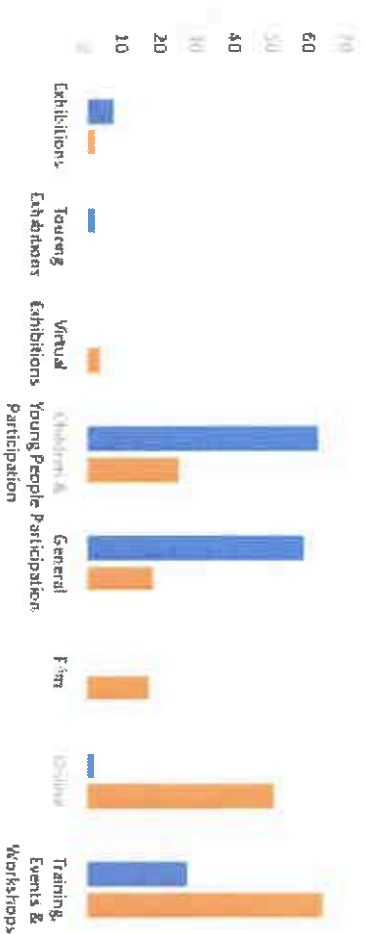
Following the announcement by The First Minister Mark Drakeford on 23 March 2020, Oriel Myrddin Gallery closed its doors. Office-based staff worked effectively home communicating via Microsoft Teams. The Front of House staff, who were unable to work from home, were placed on furlough.

Our planned programme for 2020 was either cancelled, postponed or rescheduled.

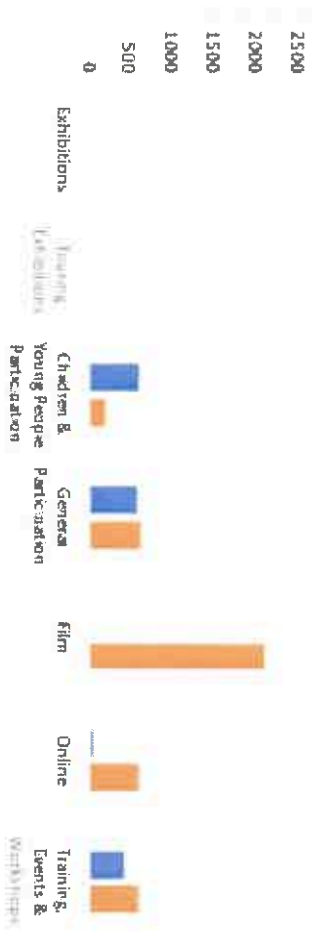
During the next few months, the Team were proactive in upskilling ourselves to creating online resources for families and schools during lockdown. Due to several successful funding applications, investing in new equipment has ensured that they can continue to develop online resources, to complement the programme of exhibitions and events going forward.

The Trustees are so proud of the Team and how together, they have reinvented ourselves and have managed to retain a high profile.

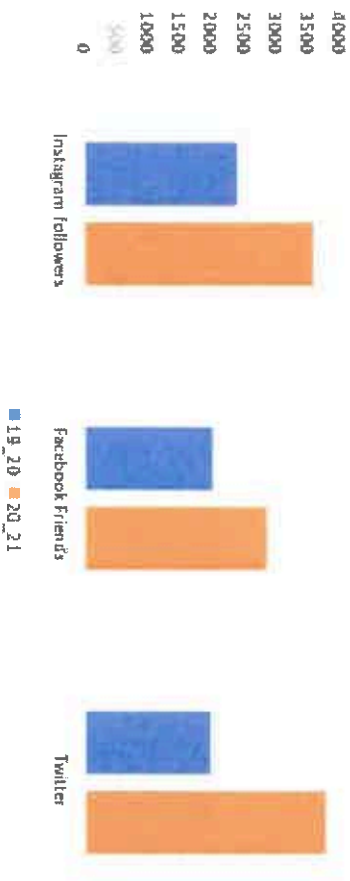
Oriel Myrddin Gallery Activity



Oriel Myrddin Gallery Engagement



Social Media



During June and July, our recovery plans were being fully developed with CCC Health and Safety Officers. All plans were rigorously scrutinised by CCC Gold and Silver command giving assurance to both staff and visitors that Oriel Myrddin Gallery was a safe place to return to when restrictions were lifted.

We reopened our doors to the public on 25 August 2020 with restricted opening hours (Tuesday – Saturday 11am – 3pm). We welcomed a steady stream of visitors through the door with the Front of House being proactive in ‘managing’ numbers, collecting data for track & trace and maintaining social distancing.

Our doors were closed again on 23 October 2020 for a two week ‘firebreak’, we reopened on 4 November 2020, and closed again on 4 December 2020.

Our face-to-face activity and events programme for families, schools, colleges and adults was suspended, the chart below illustrates numbers of sessions delivered during 19_20 with comparisons of our online sessions during 20_21.

PROGRAMME OF EVENTS

Peter Bodenham:

Llestr Mor / Sea Vessel

24 August – 24 October

Peter Bodenham is a Cardigan based artist and potter. The show featured a range of new sculptural ceramic vessels and a collaborative video art work created by the photographer and video artist Nigel Goldsmith. The inspiration for the work stems from a site-specific research based project studying the intertidal ecology of a small section of the west Wales coast. The collecting of plastic objects on regular beach cleans, coupled with the study of the local history, geology and ecology of the coastal strip, formed the basis of the project.

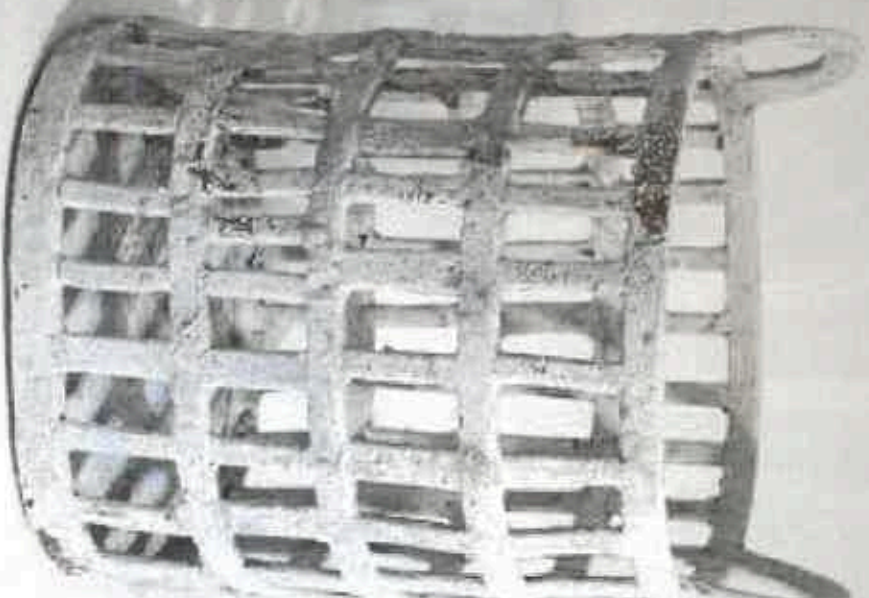
Raw materials like seaweed, clay and rocks inspired material experiments. The Plastic flotsam and jetsam inspired the shape and surface quality of the ceramic vessels and the evocative and abstract nature of the film.

Head to our website to see...

Peter Bodenham guide us round his exhibition in the main gallery and talk about his inspiration and process

A virtual Tour of the exhibition

An 'In conversation' with Sally Moss and Peter Bodenham



Featured Maker: Lee John Phillips
25 August - 24 October

Our Featured Maker from August to October 2020 was Narberth based maker, Lee John Phillips

First and foremost an illustrator + designer, Lee first took up spoon carving as a hobby and way of relieving the pressure of his day job. Today, Lee hand carves the most exquisite functional spoons and utensils using only an axe and knife. Lee's spoons are created from locally sourced green wood.

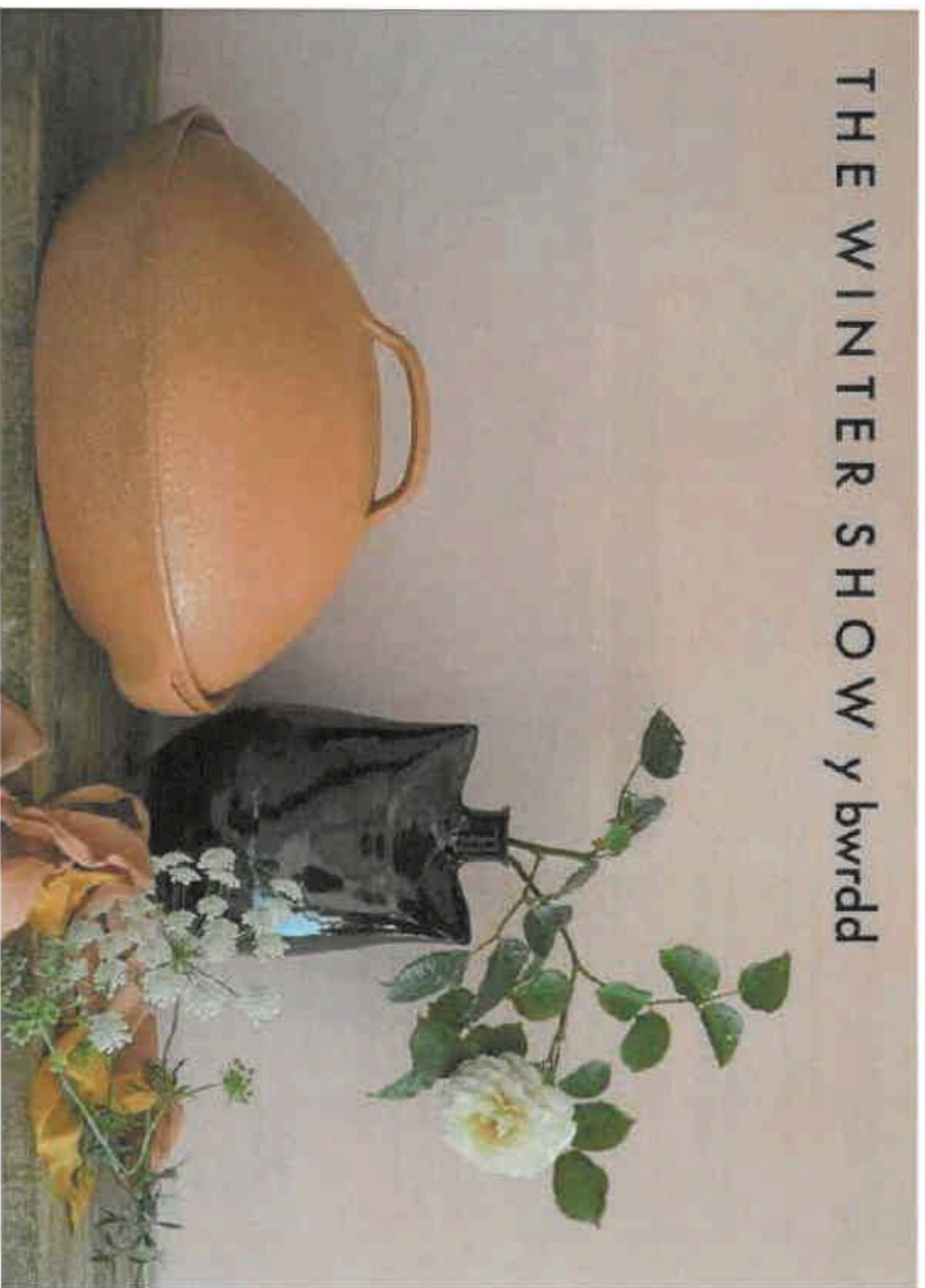


**The Table // Y Bwrdd
The Winter Show**

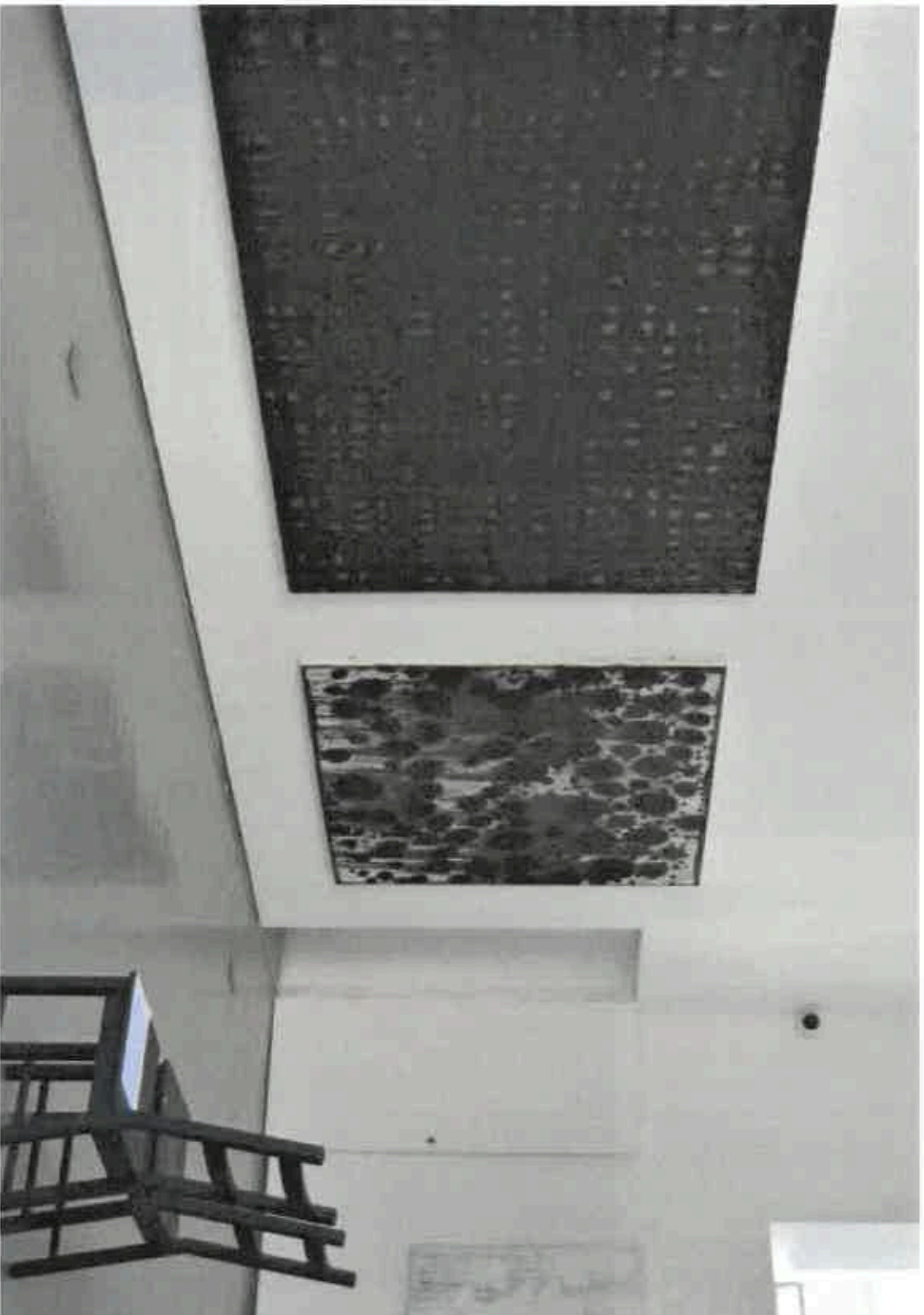
7 November – 31 December
(closed 4 December due to
Lockdown)

Our Winter selling show The Table // Y Bwrdd returned for a second year to offer the best in timeless craft and contemporary art from some of the finest creatives that Wales and across the UK has to offer.

The Table this year looked to new beginnings and we hoped to offer a respite and perhaps a little optimism for the year ahead. Showing a wealth of creativity in the form of ceramics, textiles, wood, and paint.



Y Bwrdd 2020



Helen Booth: Breathe

Helen Booth: Breathe

1 March – 12 June 2021

FREE

The majority of work in this solo exhibition is a direct response to Helen's residency at Hafnarborg Arts and Culture Centre in Iceland in late 2019. Witnessing what Helen describes as a 'Divine landscape', these works interpret nature in its purist form using the limitless variations of the single dot.

The dots in Helen's work can represent many different concepts - air trapped in ice or falling snow. It can be the end of a sentence or a punctuation in a landscape. A symbol of life and a representation of death – a full stop.

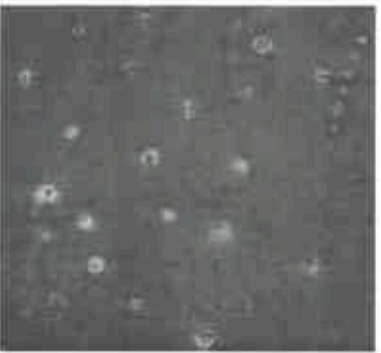
The loosely applied paint is equally as emotional a response to the process of painting, as is the restrained colour palette, creating work that focuses on the mark and texture without the distraction of colour. This way of working is fundamental in striving to capture our emotions and responses to life, landscapes, and the elements that are thrown at us.

Head to our website to see...

A virtual Tour of Helen's exhibition

An 'In conversation' with Hattie Morrison and Helen Booth

A tour of Helen Booth's studio



PROJECTS AND INITIATIVES

Oriel Myrddin Trust would like to thank the Arts Council of Wales for the funding which made this project possible. We would also like to thank all the wonderful young people, project artists and external partners who worked hard to make this project such a success.

Criw Celf Primary

Overview

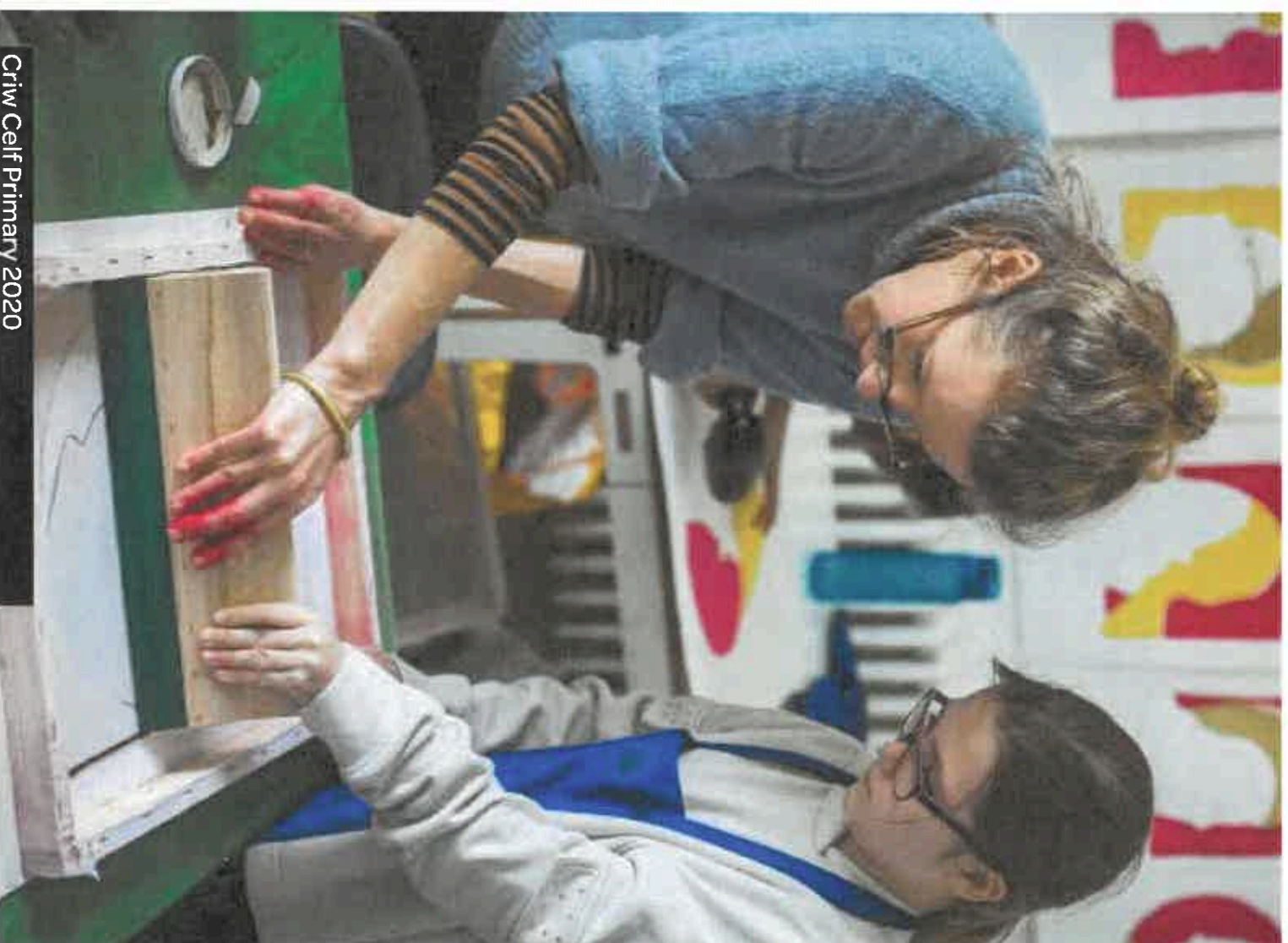
- Involved 12 young people in years 7, 8 and 9
- 5 professional artists led the workshops
- Part of the Criw Celf Mid and West partnership

Budget

- Overall budget for Criw Celf Primary at OMG was £10,041.97
- £8558.61 from Arts Council of Wales
- £480 via the annual membership fee
- £1003.36 cash contribution from OMG

Recruiting the Young People

- All Carmarthenshire Secondary Schools contacted
- 2 schools nominated pupils
- Both of the nominating schools had previously participated
- 14 nominations were received (including home educated children)
- 12 young people were selected
- 10 girls and 2 boys
- 1 was in receipt of Free School Meals
- 5 had participated in a previous Criw Celf programme.
- 5 had participated in a previous Criw Celf programme.



Criw Celf Primary 2020

Master Classes

Introductory Family Masterclass

The introductory family masterclass was led by Oriol Myrddin Gallery's Education Officer Emma Baker.

The session offered a chance for participants to get to know each other and make a small bird out of clay.

Wire Frame Animals

Polly Verity

Artist Polly Verity taught participants to make wire framed animals with tissue paper skins over 2 sessions.

Screen Print Portraits

Kate Kekwick -

Participants created screen print portraits using 2 colours and 2 paper cut stencils using natural inks.

Plaster Cast Tiles

Lisa Evans

Exploring interesting textures, participants created imprints into clay to then cast into plaster.

Alternative Jewellery

Anna Lewis

Using a variety of bright, found and recycled objects participants made alternative jewellery.

Unfortunately, due to the Covid-19 outbreak we were unable to take Primary participants on a trip this year.

Criw Celf Secondary

Overview

- Delivered to 11 children in school years 7, 8 & 9
- 5 professional artists
- Delivered as part of the Criw Celf Mid & West partnership
- Delivered online over an intensive week in
- October half term 2020 due to covid-19
- 11 materials packs collected from the gallery in
- a socially distanced way to be used during workshops.

- 1 pack posted out to a student not able to
- collect using the accessibility fund

Budget

- Overall budget was £7265
- £6070 from Arts Council of Wales
- £600 via the annual membership fee
- £595 cash contribution from OMG

Recruiting the Young People

- All Carmarthenshire Secondary Schools were sent information regarding the project at the beginning of the new academic year. 3 schools nominated plus some home schoolers
- 22 nominations were received
- 15 young people were selected

to take part, comprising 12 girls and 3 boys

- 2 were in receipt of Free School Meals

- 3 had participated in a previous Criw Celf programme.

Masterclasses

All masterclasses happened during the second Wales-wide 'firebreak' lockdown during October half term. They were delivered 'live' so participants could ask questions and interact with the artist and each other.

Ceramic Selfies

Simone Bizzell-Browning

Simone took our first live online workshop to create ceramic selfies using air-dry clay to enable participants to work from home with no need for firing.

Kitchen Table Sculpture

Peter Bodenham

Peter had just finished his solo exhibition at the gallery. We sent packs of beach cleaning rubbish to each participant and they made small, improvised 'kitchen table' sculptures. Peter guided them through ways to photograph their sculptures in a professional way.

Willow Withy Mobiles

Emily Laurens

Participants used of willow withy and 'wet strength' tissue paper to create

a mobile in the style of Alexander Calder.

Sculptural Construction

Lisa Evans

Students were encouraged to explore 'Materiality' with Lisa, using willow, lath, tape, tissue paper and other materials participants made a structure.

Embellished Glasses

Anna Lewis

Jewellery maker Anna sent students a pack to create fun, fashion-inspired, embellished glasses. Participants were encouraged to use their interests and personalities to decorate their glasses.

Training for artists to deliver workshops online:

With Criw Celf Secondary being delivered online this year and to help our artists feel more confident about delivery in this format we had a training session delivered by Tom Goddard of Arts Active, Ceramicist Lucy Dickson and digital artist Nic Finch. The training was attended by 22 participants..



*Podcast training:
MAD Swansea hosted some
online podcast training
for the OMG team. We
have upskilled ourselves
and learnt how to create
podcasts, and edit using
audacity and different
hosting platforms.*



Podcasts

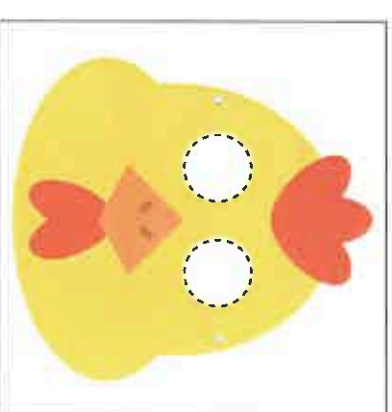
**Oriel O Gwmpas // Oriol Everywhere
FREE**

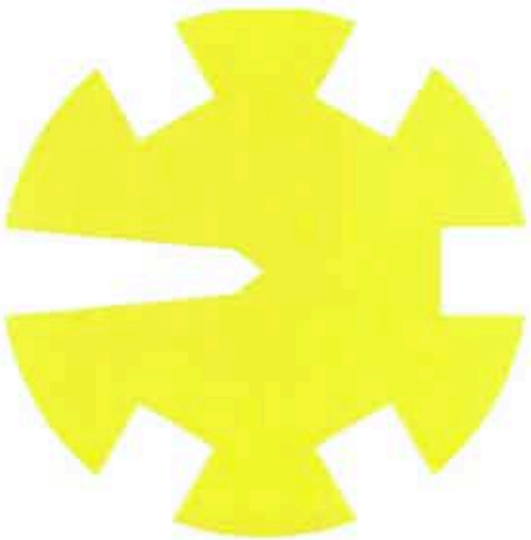
With a small grant from Engage Cymru, we initially produced two bilingual podcasts in collaboration with Ensemble Cymru: Perlau Glaw and Airstream.

Further funding from The Millennium Stadium Trust we produced four more again in collaboration with Ensemble Cymru and Mererid Hopwood. 'The Lost Sounds' series focuses on words and sounds that have been 'lost' from the Welsh language. Mererid created a series of original poems which then inspired a series of original compositions to accompany them.

With a large grant from ArtFund we have developed ten more podcasts in collaboration with Ensemble Cymru. The 5 ways to Wellbeing series features tracks inspired by the 5 ways to wellbeing and different animals that were originally commissioned by school children. Each podcast has an accompanying mask and we are growing a package of activities around them.

All our podcasts are now hosted by anchor but are also available via spotify, google podcasts, apple podcasts, pocketcasts, breaker and radiopublic. You can hear them all by going to our website.





#15 Hoelion Wyth Cymdeithas // Pillars of Society

This community project was funded by a collaboration between The National Lottery Heritage Fund and CADW.

#15 Hoelion Wyth Cymdeithas //

Pillars of Society looks at public art in Carmarthen investigated the stories and histories behind it's statues and monuments through art, walking and augmented reality.

The project was a response to the national (and international) debate around public art and colonial history. It created a space for discussion about race, equality, diversity, Welsh identity and language, Welsh independence and the experience of Wales as coloniser and colonised.

The project was not so much about action but more about listening as Sarah Younan of The National Museum of Wales and one of the contributing artists says: *'It's always important to listen to Black voices in the reframing of Black history. Something we've learned in the museum is that people from the community want to go beyond focusing on the traumatising stuff towards yes, recognising the bad that has happened, but also towards recognising and celebrating the strength, resilience and achievements of Black communities in Wales.'*

Emily Laurens of Oriel Myrddin Gallery : *'One of the fascinating things about the project is the links between these things, Iolo Morgannwg who had a massive impact on the way the Eisteddfod is celebrated was also an anti-slavery campaigner, Gwynfor Evans whose plaque we will be looking at also campaigned against foreign wars in Vietnam and the Biafran war in Nigeria, wars that were a direct result of colonial rule and neo-colonialism. I'm really looking forward to exploring these links and discovering more about Carmarthen's fascinating history.'*

Oriel Myrddin Gallery will be working closely with students from Carmarthen School of Art. There were also lots of opportunities for local residents to get involved including a series of public talks, volunteering opportunities and spaces for discussion and debate.

The project will create a walking tour through Carmarthen with accompanying map and augmented reality apps showing alternative public art works designed by the participants with an official launch date of 4 July 2021

List of workshops and events

FREE

Opening event (public)

Ken Murphy -

The Archaeology of Carmarthen

Opening session with Emily Laurens

Workshop with artist Claire Quinn

The Dérive: A Decolonisation Practice, its potential as a decolonising intervention and a revolutionary approach to reimagining public art.

Workshop with Sarah Younan (National Museum Wales) and representatives of the Sub Saharan Advisory Panel
Questioning the Role of Monuments as Memory

Talk with Umalkhayr Mohammed and Chris Evans
Wales and colonialism, the personal and the historical

Workshop with Rowan O'Neill
From National Eisteddfod to a National Future for Wales

Follow up session with Rowan O'Neill
Talk on Gwynfor Evans with Peter Hughes Griffiths

Dr Sarah Younan - Questioning the Role of Monuments as Memory

Wanda Zyborska
Atgofion Pwy o Beth? // Whose Memories of What?



Artgofio Derw / Oak project

Last Autumn we started planning a project to commemorate the people who have died of Covid 19 in Carmarthenshire in 2020. We wanted to plant oak trees and called out for people to plant acorns during autumn 2020; people with outdoor space in and around Carmarthen to plant oak saplings in autumn 2021; and people who will join a group to look after the saplings once they have been planted out.

More information about the project and how to plant your acorns was available on our website and social media.

Carmarthen has a long association with oak trees, and they have a vital role to play supporting other species. Trees also mitigate climate change, removing CO2 from the air, storing carbon, and releasing oxygen.

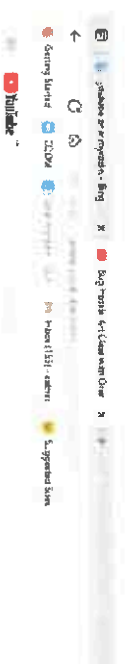
The oak tree is a symbol of strength and morale, easily surpassing 300 years of age; they are a powerful life-affirming symbol.

Dosbarth Celf // Art Class

FREE

In March 2020 we launched the first in our series of Art Classes for young people and families to participate in during lockdown. These creative activities for young children and families used readily available household materials.

Bug Hotels <https://youtu.be/MUIGijk2qRo>
 Paper flowers https://youtu.be/JuAykqtqM_Q
 Bird Mobiles <https://youtu.be/AzS-R1zc27w>
 Butterfly automata <https://youtu.be/XwYuewpsOY>
 Kites https://youtu.be/OHH_J8sz3bA
 Rattles https://youtu.be/_Mw8EMxK64
 Matchbox Theatres <https://youtu.be/XFuy5uKXJdU>
 3D Animals <https://youtu.be/LfzDkwQvowO>
 Making paper <https://youtu.be/PlzMaGpRvU>
 Mobiles <https://youtu.be/wfc5x15sg4>
 Party poppers <https://youtu.be/q9RsDDVwwkc>
 Planting acorns <https://youtu.be/AzmikgA2Vws>
 Weaving <https://youtu.be/3M3jioKAfqc>
 Easter bunnies https://youtu.be/hvfqe_7RRAI
 Halloween Webs <https://youtu.be/sAtJWEZhHSY>
 Halloween Pumpkin <https://youtu.be/gwOf5sZ2XeM>
 Halloween Ghost <https://youtu.be/MIOHQXyLvjK>



Bug Hotels Art Class with Oriol Mayordín // Guest(s) Pwyd Dosbarth celf gyda Oriol Mayordín

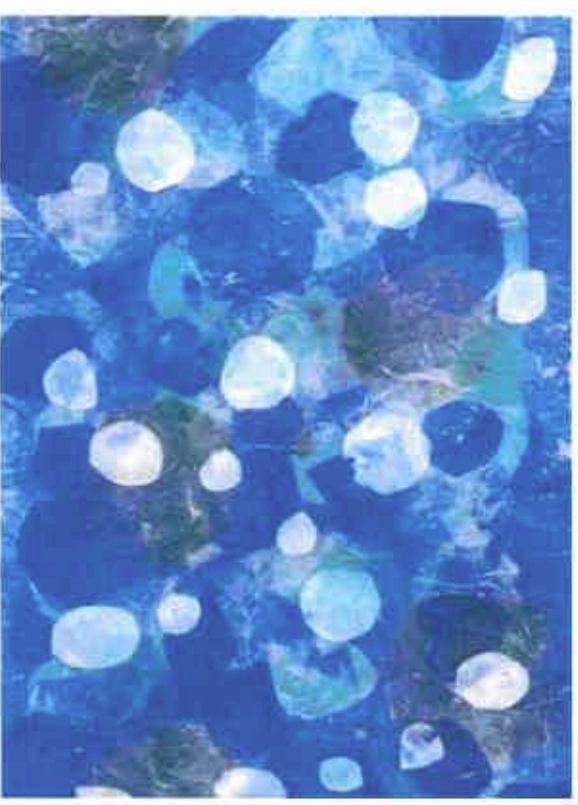
'Me, my mum and my brother really enjoyed Dosbarth Celf it was good fun' ... Eva, aged 7



Easter Bunnies

Young Artists Club Online YACO's £40 per term

In autumn 2020 our Young Artists Club went online as YACO's (Young Artists Club Online) for a blast of creativity and experimentation. We aimed to boost problem solving, and lateral thinking through drawing, pattern making, collage and working with text. Spring term 2021 was still online and centred on capturing winter inspired by the work of Helen Booth.



Oriel Myrddin 'Lockdown' Gallery

FREE

Launched 10 June 2020 - A 'Virtual' exhibition taking place across our social media channels: Facebook, Instagram and Twitter. 34 artworks shown over two Image

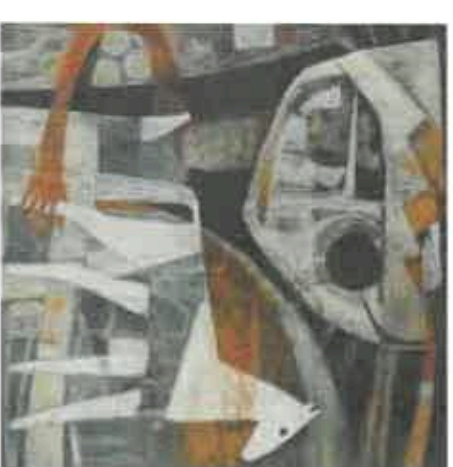
DAC Art Prize Instagram 'take-over'

With prize winner Roy Barry - Launched 20 September 2020 over five days. Instagram 'take-over' by Disability Arts Cymru prize winner Roy Barry.

Instagram 'take-over'



Oriel Myrddin Lockdown Gallery





Oriel Myrdin Gallery is Carmarthenshire's specialist for contemporary Wales art, craft and design
a place where we can bring you with contemporary artists through a unique and carefully selected high quality
programme of the visual and digital arts

01493 211111



Oriel Myrdin Gallery
 Location
 Contact
 Opening Hours
 About Us
 News

New Gallery Website

www.orielmyrdingallery.co.uk

With the upskilling of staff and the investment in new equipment we discovered our old website wasn't really fit for purpose.

Our shiny new website allows us to upload films, podcasts and update and add pages and content ourselves.

We hope you agree that it is a big improvement.



Gallery Online Shop COMING SOON!

2020 really pushed us to re-assess our retail format and reach. With more days spent closed than open to the public, it became quite clear that we are in desperate need of an online shop to continue offering high quality art and craft.

With the premature closure of our Winter selling show and with no ecommerce site to move the show onto, we used Instagram to promote and sell our makers work. Although not ideal (customers had to phone up to pay), it was interesting to hear where our customers were based: Australia, America, New Zealand as well as the UK.

In January 2021, working with colleagues within Carmarthenshire County Council we have put plans in place to build an online shop from scratch.

It is currently with the web developers; we hope to launch it in early June

Oriel Myrddin Gallery

Lon y Llan, Caerfyrddin, Sir Caerfyrddin, SA31 1LH
Church Lane, Carmarthen, Carmarthenshire, SA31 1LH
www.orielmyrddingallery.co.uk



Cyngor Celfyddydol Cymru
Arts Council of Wales

Oriel Myrddin Trust

Chair of the Board: Councillor Emlyn Schiavone

signed

A handwritten signature in black ink, appearing to read "E. Schiavone".

date

18th June, 2021



**ARIENNIR GAN
Y LOTERI
LOTTERY FUNDED**



ORIEL MYRDDIN

STATEMENT OF ACCOUNTS

FOR THE YEAR ENDING 31ST MARCH, 2021

Registered Charity Number 1031498

STATEMENT OF ACCOUNTING POLICIES

General

These accounts have been prepared on the going concern basis, as there is no material uncertainty related to events or conditions that may cast doubt about the ability of the Oriel Myrddin Gallery Trust Fund to continue as a going concern

The accounts are maintained by Carmarthenshire County Council on behalf of the Trustees of Oriel Myrddin and are also included within the Statement of Accounts of the Authority for the financial year ended 31st March 2021. The Authority's accounts are audited by the appointed external auditors – Wales Audit Office.

1. Grants

Grants are given by the Arts Council of Wales in support of exhibitions and educational programmes run by the gallery.

2. Carmarthenshire County Council

The County Council provides direct revenue support in running the gallery, which is highlighted in the accounts.

3. Administrative Expenses

The County Council also provides professional, technical and administrative assistance for which it makes no charge to the Charity.

4. Charitable Expenses

These are the costs of operating the gallery to provide exhibitions and educational programmes and are made up as follows: -

	<u>2020-21</u>	<u>2019-20</u>
	£	£
Staffing Costs (Note 1)	120,304	119,175
Premises Related Costs (Note 6)	20,924	15,527
Transport Related Costs (Note 7)	8	887
Supplies and Services (Note 8)	<u>40,090</u>	<u>58,896</u>
TOTAL	181,326	194,485
	=====	=====

5. **Contingencies/Repairs and Renewals Fund**

Any net surplus or deficit of income over expenditure is transferred to the fund at the year-end in order to meet any unexpected fluctuations in future years. The Trustees have identified that the primary purpose for retaining this reserve is to enable repairs and maintenance to be carried out as and when required – though it may be used for other purposes should the Trustees deem this expedient.

Reserve summary:-

	<u>2020-21</u>	<u>2019-20</u>
	£	£
Opening balance	126,809	134,299
Reserve movement	<u>17,040</u>	<u>(7,490)</u>
Closing balance	143,849	126,809
	=====	=====

A review of the reserves policy is in progress as the Trustees plan for the expansion of the gallery and its associated activity arising from the capital development anticipated for 2021/22 and also consider the effects of COVID19. A regular review of the Reserve is undertaken as a minimum annually.

6. **Fixed Assets**

The capital cost of the gallery is reflected in the balance sheet of the County Council, which is the custodian trustee for the property under the terms of the Trust Deed, and in accordance with CIPFA recommended practice a charge is calculated each year, which reflects an annual provision for depreciation. This charge has been absorbed by Carmarthenshire County Council in addition to the direct and indirect revenue support given to the Charity (see no. 9 of the Notes to the Accounts).

7. **Stock**

Stock is valued at the lower of cost and net realisable value in accordance with Statement of Standard Accounting Practice No. 9.

8. **IAS 19**

Since 2003/04 the local authority has been required to implement accounting standard IAS19 (previously named FRS17) relating to Retirement Benefits for employees. In the case of Oriel Myrddin, a charge has been included against the indirect support given by Carmarthenshire County Council (see no. 9 of the Notes to the Accounts).

9. **Related Party Transactions**

This is defined as a transfer of resources or obligations between a reporting entity and a related party, regardless of whether a price is charged. Related party transactions exclude transactions with any other entity that is a related party solely because of its economic dependence on the authority or the government of which it forms part.

Please see no. 5 and no. 9 of the Notes to the Accounts for relevant transactions.

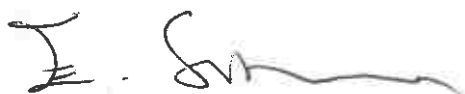
STATEMENT OF FINANCIAL ACTIVITIES

	<u>2020-21</u>	<u>2019-20</u>
	£	£
INCOME		
Voluntary Incoming Resources (Note 5)		
Grants from Public Bodies		
Local Authorities:		
Carmarthenshire County Council		
- Annual Revenue Support	95,436	93,565
Carmarthen Town Council	3,700	4,500
Arts Council of Wales	47,666	47,147
Public Donations	0	0
Additional Grants	38,410	0
Investment Income	204	656
Trading Activities (Note 4)		
Charitable Trading	15,428	44,213
Other Income	0	0
TOTAL INCOME	200,844	190,081
	=====	=====
EXPENDITURE		
Direct Charitable Expenditure		
Staffing Costs (Note 1)	120,304	119,175
Premises Related Costs (Note 6)	20,924	15,527
Transport Related Costs (Note 7)	8	887
Supplies and Services (Note 8)	<u>40,090</u>	<u>58,896</u>
	181,326	194,485
Other Expenditure		
Fund-Raising and Publicity	2,255	2,795
Management and Administration	<u>223</u>	<u>291</u>
TOTAL EXPENDITURE	183,804	197,571
NET INCOME / (EXPENDITURE) FOR THE YEAR	17,040	(7,490)
Total Funds Brought Forward from last year's Balance Sheet	<u>126,809</u>	<u>134,299</u>
Total Funds Carried Forward in this year's Balance Sheet	<u>143,849</u>	<u>126,809</u>
	=====	=====

BALANCE SHEET

	<u>31.3.21</u>	<u>31.3.20</u>
	£	£
FIXED ASSETS	Nil	Nil
Current Assets		
Stock	18,581	14,661
Imprest Account	150	150
Cash	135,464	112,750
Payment in Advance	0	0
Sundry Debtors General	<u>0</u>	<u>0</u>
TOTAL CURRENT ASSETS	154,195	127,561
Current Liabilities		
Sundry Creditors General	2,139	752
Receipts In Advance	<u>8,207</u>	<u>0</u>
TOTAL CURRENT LIABILITIES	10,346	752
NET CURRENT ASSETS	<u>143,849</u>	<u>126,809</u>
TOTAL ASSETS LESS LIABILITIES	143,849	126,809
	=====	=====
Represented by :		
Unrestricted Income Fund :		
Contingency/Repairs and Renewals Fund	<u>143,849</u>	<u>126,809</u>

SIGNED



DATE

18/6/2021

ON BEHALF OF THE BOARD OF TRUSTEES

NOTES TO THE ACCOUNTS

1. Staff Emoluments

As shown in the Statement of Financial Activities the total cost of staff emoluments was £120,304 (2019/20 £119,175). The 20-21 figure includes a 2.75% pay award, no increase to the employer superannuation rate and incremental increases to qualifying posts.

None of the Trustees received any remuneration from the Charity.

2. Staffing Complement

The gallery has one full time and seven part-time posts (4.12 Full Time Equivalent).

3. Reimbursement of Expenses to Trustees

No expenses were reimbursed to Trustees in the year or in the previous year.

4. Additional Income

Additional income was reflected in 2020-2021 as follows:

The trading income generated in 2020/21 was £15,428 (2019/20 £44,213).

5. Voluntary Incoming Resources

£47,666 was received from the Arts Council of Wales in 2020/21 (2019/20 £47,147).

£3,700 was received from Carmarthen Town Council in 2020/21 (2019/20 £4,500).

£0 was received from the general public in 2020/21 as donations towards the running of the gallery (2019/20 £0).

Additional income was received during 2020-21 as follows:-

Heritage Lottery Fund	£2,564
Art Fund	£8,229
HMRC (Furlough)	£19,819
WAG (Loss of Income)	£7,797

6. Premises Related Expenditure

As shown in the Statement of Financial Activities, the total cost of premises related expenditure in 2020/21 was £20,924 (2019/20 £15,527).

7. Transport Related Expenditure

As shown in the Statement of Financial Activities, the total cost of transport related expenditure in 2020/21 was £8 (2019/20 £887).

8. Supplies & Services Expenditure

As shown in the Statement of Financial Activities, the total cost of supplies & services expenditure in 2020/21 was £40,090 (2019/20 £58,896).

9. Carmarthenshire County Council

The cost of the indirect revenue support provided by Carmarthenshire County Council, which does not appear in these accounts, is as follows: -

	<u>2020-21</u>	<u>2019-20</u>
	£	£
Professional and Administrative Support	25,801	28,438
Employee Related Expenditure	14,284	15,768
Premises Related Expenditure	28,950	23,530
Appropriation/Contribution to/from Insurance Reserve	0	0
Depreciation/Revaluation Losses	<u>11,321</u>	<u>8,333</u>
TOTAL	80,356 =====	76,069 =====

These are in addition to the £95,436 Revenue Support Grant (2019/20 £93,565) provided by Carmarthenshire County Council which are included in the Statement of Financial Activities.

Employee Related Expenditure – This covers charges and accounting adjustments for IFRS annual leave entitlement, current service cost (IAS19) (see point 8 within Statement of Accounting Policies above) and employee related insurance premiums.

Premises Related Expenditure – A charge has been reflected against the indirect support given by Carmarthenshire County Council in relation to Buildings Related Insurance paid by the Authority in respect of the gallery. Also, the Authority has contributed £21,186 in 20-21 towards utility and NNDR costs associated with 26/27 King Street (£10,661 in 19-20).

Appropriation/Contribution to/from Insurance Reserve
– The Authority undertakes a substantial amount of self-insurance which gives rise to significant reserve movements. The insurance funds are used to meet the cost of claims and other losses, which could fall on the Authority. Whilst the Authority purchases a range of insurance cover, part of the risk remains with the Authority through the acceptance of 'Policy Excesses' and through the setting of 'Indemnity Limits'. In the case of Oriel Myrddin, charges and income relating to this i.e.

contributions to and from the Authority's insurance reserve are again reflected against the indirect support given by Carmarthenshire County Council.

Depreciation / Revaluation losses – An Asset Rental charge of £8,333 in both 19-20 and 20-21 relates to the 26/27 King Street properties. The remaining £2,988 in 20-21 reflects the effective revenue contribution to the capital spend (REFCUS) on the Gallery building project.

The Trust is in negotiation with the County Council about the opportunity to extend the gallery into adjoining premises, namely 26/27 King Street. No agreements were in place at the date of signing these accounts.

ORIEL MYRDDIN

STATEMENT OF ACCOUNTS

FOR THE YEAR ENDING 31ST MARCH, 2021

Registered Charity Number 1031498

STATEMENT OF ACCOUNTING POLICIES

General

These accounts have been prepared on the going concern basis, as there is no material uncertainty related to events or conditions that may cast doubt about the ability of the Oriel Myrddin Gallery Trust Fund to continue as a going concern

The accounts are maintained by Carmarthenshire County Council on behalf of the Trustees of Oriel Myrddin and are also included within the Statement of Accounts of the Authority for the financial year ended 31st March 2021. The Authority's accounts are audited by the appointed external auditors – Wales Audit Office.

1. Grants

Grants are given by the Arts Council of Wales in support of exhibitions and educational programmes run by the gallery.

2. Carmarthenshire County Council

The County Council provides direct revenue support in running the gallery, which is highlighted in the accounts.

3. Administrative Expenses

The County Council also provides professional, technical and administrative assistance for which it makes no charge to the Charity.

4. Charitable Expenses

These are the costs of operating the gallery to provide exhibitions and educational programmes and are made up as follows: -

	<u>2020-21</u>	<u>2019-20</u>
	£	£
Staffing Costs (Note 1)	120,304	119,175
Premises Related Costs (Note 6)	20,924	15,527
Transport Related Costs (Note 7)	8	887
	<u>40,090</u>	<u>58,896</u>
Supplies and Services (Note 8)	181,326	194,485
TOTAL	=====	=====

5. **Contingencies/Repairs and Renewals Fund**

Any net surplus or deficit of income over expenditure is transferred to the fund at the year-end in order to meet any unexpected fluctuations in future years. The Trustees have identified that the primary purpose for retaining this reserve is to enable repairs and maintenance to be carried out as and when required – though it may be used for other purposes should the Trustees deem this expedient.

Reserve summary:-

	<u>2020-21</u>	<u>2019-20</u>
	£	£
Opening balance	126,809	134,299
Reserve movement	<u>17,040</u>	<u>(7,490)</u>
Closing balance	143,849	126,809
	=====	=====

A review of the reserves policy is in progress as the Trustees plan for the expansion of the gallery and its associated activity arising from the capital development anticipated for 2021/22 and also consider the effects of COVID19. A regular review of the Reserve is undertaken as a minimum annually.

6. **Fixed Assets**

The capital cost of the gallery is reflected in the balance sheet of the County Council, which is the custodian trustee for the property under the terms of the Trust Deed, and in accordance with CIPFA recommended practice a charge is calculated each year, which reflects an annual provision for depreciation. This charge has been absorbed by Carmarthenshire County Council in addition to the direct and indirect revenue support given to the Charity (see no. 9 of the Notes to the Accounts).

7. **Stock**

Stock is valued at the lower of cost and net realisable value in accordance with Statement of Standard Accounting Practice No. 9.

8. **IAS 19**

Since 2003/04 the local authority has been required to implement accounting standard IAS19 (previously named FRS17) relating to Retirement Benefits for employees. In the case of Oriel Myrddin, a charge has been included against the indirect support given by Carmarthenshire County Council (see no. 9 of the Notes to the Accounts).

9. **Related Party Transactions**

This is defined as a transfer of resources or obligations between a reporting entity and a related party, regardless of whether a price is charged. Related party transactions exclude transactions with any other entity that is a related party solely because of its economic dependence on the authority or the government of which it forms part.

Please see no. 5 and no. 9 of the Notes to the Accounts for relevant transactions.

STATEMENT OF FINANCIAL ACTIVITIES

	<u>2020-21</u>	<u>2019-20</u>
	£	£
INCOME		
Voluntary Incoming Resources		
(Note 5)		
Grants from Public Bodies		
Local Authorities:		
Carmarthenshire County Council	95,436	93,565
- Annual Revenue Support		
	3,700	4,500
Carmarthen Town Council	47,666	47,147
Arts Council of Wales	0	0
Public Donations	38,410	0
Additional Grants	204	656
Investment Income		
Trading Activities (Note 4)	15,428	44,213
Charitable Trading	0	0
Other Income		
	200,844	190,081
TOTAL INCOME	=====	=====
		=
EXPENDITURE		
Direct Charitable Expenditure	120,304	
Staffing Costs (Note 1)	20,924	119,175
Premises Related Costs (Note 6)	8	15,527
Transport Related Costs (Note 7)	40,090	887
Supplies and Services (Note 8)		58,896
	181,326	
		194,485
Other Expenditure	2,255	
Fund-Raising and Publicity	223	2,795
Management and Administration		291
	183,804	
TOTAL EXPENDITURE		197,571
	17,040	
NET INCOME / (EXPENDITURE) FOR THE YEAR		(7,490)
	126,809	
Total Funds Brought Forward from last year's Balance Sheet		134,299
	143,849	
Total Funds Carried Forward in this year's Balance Sheet	=====	126,809 =====

BALANCE SHEET

	<u>31.3.21</u>	<u>31.3.20</u>
	£	£
FIXED ASSETS	Nil	Nil
Current Assets		
Stock	18,581	14,661
Imprest Account	150	150
Cash	135,464	112,750
Payment in Advance	0	0
Sundry Debtors General	<u>0</u>	<u>0</u>
TOTAL CURRENT ASSETS	154,195	127,561
Current Liabilities		
Sundry Creditors General	2,139	752
Receipts In Advance	<u>8,207</u>	<u>0</u>
TOTAL CURRENT LIABILITIES	10,346	752
NET CURRENT ASSETS	<u>143,849</u>	<u>126,809</u>
TOTAL ASSETS LESS LIABILITIES	143,849	126,809
	=====	=====
Represented by :		
Unrestricted Income Fund :		
Contingency/Repairs and	<u>143,849</u>	<u>126,809</u>
Renewals		
Fund		

SIGNED

DATE

ON BEHALF OF THE BOARD OF TRUSTEES

NOTES TO THE ACCOUNTS

1. Staff Emoluments

As shown in the Statement of Financial Activities the total cost of staff emoluments was £120,304 (2019/20 £119,175).

The 20-21 figure includes a 2.75% pay award, no increase to the employer superannuation rate and incremental increases to qualifying posts.

None of the Trustees received any remuneration from the Charity.

2. Staffing Complement

The gallery has one full time and seven part-time posts (4.12 Full Time Equivalent).

3. Reimbursement of Expenses to Trustees

No expenses were reimbursed to Trustees in the year or in the previous year.

4. Additional Income

Additional income was reflected in 2020-2021 as follows:

The trading income generated in 2020/21 was £15,428 (2019/20 £44,213).

5. Voluntary Incoming Resources

£47,666 was received from the Arts Council of Wales in 2020/21 (2019/20 £47,147).

£3,700 was received from Carmarthen Town Council in 2020/21 (2019/20 £4,500).

£0 was received from the general public in 2020/21 as donations towards the running of the gallery (2019/20 £0).

Additional income was received during 2020-21 as follows:-

Heritage Lottery Fund	£2,564
Art Fund	£8,229
HMRC (Furlough)	£19,819
WAG (Loss of Income)	£7,797

6. Premises Related Expenditure

As shown in the Statement of Financial Activities, the total cost of premises related expenditure in 2020/21 was £20,924 (2019/20 £15,527).

7. Transport Related Expenditure

As shown in the Statement of Financial Activities, the total cost of transport related expenditure in 2020/21 was £8 (2019/20 £887).

8. Supplies & Services Expenditure

As shown in the Statement of Financial Activities, the total cost of supplies & services expenditure in 2020/21 was £40,090 (2019/20 £58,896).

9. Carmarthenshire County Council

The cost of the indirect revenue support provided by Carmarthenshire County Council, which does not appear in these accounts, is as follows: -

	<u>2020-21</u>	<u>2019-20</u>
	£	£
Professional and Administrative Support	25,801	28,438
Employee Related Expenditure	14,284	15,768
Premises Related Expenditure	28,950	23,530
Appropriation/Contribution to/from Insurance Reserve	0	0
Depreciation/Revaluation Losses	<u>11,321</u>	<u>8,333</u>
TOTAL	80,356 =====	76,069 =====

These are in addition to the £95,436 Revenue Support Grant (2019/20 £93,565) provided by Carmarthenshire County Council which are included in the Statement of Financial Activities.

Employee Related Expenditure – This covers charges and accounting adjustments for IFRS annual leave entitlement, current service cost (IAS19) (see point 8 within Statement of Accounting Policies above) and employee related insurance premiums.

Premises Related Expenditure – A charge has been reflected against the indirect support given by Carmarthenshire County Council in relation to Buildings Related Insurance paid by the Authority in respect of the gallery. Also, the Authority has contributed £21,186 in 20-21 towards utility and NNDR costs associated with 26/27 King Street (£10,661 in 19-20).

Appropriation/Contribution to/from Insurance Reserve
– The Authority undertakes a substantial amount of self-insurance which gives rise to significant reserve movements. The insurance funds are used to meet the cost of claims and other losses, which could fall on the Authority. Whilst the Authority purchases a range of insurance cover, part of the risk remains with the Authority through the acceptance of ‘Policy Excesses’ and through the setting of ‘Indemnity Limits’.

In the case of Oriel Myrddin, charges and income relating to this i.e. contributions to and from the Authority's insurance reserve are again reflected against the indirect support given by Carmarthenshire County Council.

Depreciation / Revaluation losses – An Asset Rental charge of £8,333 in both 19-20 and 20-21 relates to the 26/27 King Street properties. The remaining £2,988 in 20-21 reflects the effective revenue contribution to the capital spend (REFCUS) on the Gallery building project.

The Trust is in negotiation with the County Council about the opportunity to extend the gallery into adjoining premises, namely 26/27 King Street. No agreements were in place at the date of signing these accounts.



Section A

Independent Examiner's Report

Report to the trustees/
members of

Charity Name
Oriol Myrddin

On accounts for the year
ended

31st March, 2021

Charity no
(if any)

1031498

Set out on pages

(remember to include the page numbers of additional sheets)

Respective
responsibilities of
trustees and examiner

The charity's trustees are responsible for the preparation of the accounts in accordance with the Charities Act 2011 ("the Act").

The charity's trustees consider that an audit is not required for this year under section 144 of the Act and that an independent examination is needed. I am qualified to undertake the examination by being a qualified member of ACCA.

It is my responsibility to:

- examine the accounts under section 145 of the Charities Act,
- to follow the applicable Directions given by the Charity Commission (under section 145(5)(b) of the Act, and
- to state whether particular matters have come to my attention

Basis of independent
examiner's statement

My examination was carried out in accordance with general Directions given by the Charity Commission. An examination includes a review of the accounting records kept by the charity and a comparison of the accounts presented with those records. It also includes consideration of any unusual items or disclosures in the accounts, and seeking explanations from the trustees concerning any such matters. The procedures undertaken do not provide all the evidence that would be required in an audit, and consequently no opinion is given as to whether the accounts present a 'true and fair' view and the report is limited to those matters set out in the statement below.

**Independent
examiner's statement**


In connection with my examination, no material matters have come to my attention other than that disclosed below which gives me cause to believe that in, any material respect:

- the accounting records were not kept in accordance with section 130 of the Charities Act; or
- the accounts did not accord with the accounting records; or
- the accounts did not comply with the applicable requirements concerning the form and content of accounts set out in the Charities (Accounts and Reports) Regulations 2008 other than any requirement that the accounts give a 'true and fair' view which is not a matter considered as part of an independent examination.

I have no concerns and have come across no other matters in connection with the examination to which attention should be drawn in order to enable a proper understanding of the accounts to be reached.

** Please delete the words in the brackets if they do not apply.*

Signed:



Date:

27th August 2021

Name:

Caroline Powell

Relevant professional
qualification(s) or body
(if any):

ACCA

Address:

Carmarthenshire County Council

Building 8, St David's Park

Carmarthen. SA31 3HB

Section B**Disclosure**

Only complete if the examiner needs to highlight material matters of concern (see CC32, Independent examination of charity accounts: directions and guidance for examiners).

Give here brief details of any items that the examiner wishes to disclose.

None.