

SUDDEN PRODUCTIONS

England & Wales · Charity number 1018887

Details

Other names	DEEP IMPACT THEATRE COMPANY, YOUTH THEATRE IN ARTS
Status	Registered
Legal form	Other
Registered	1993-03-17
Register	View on the Charity Commission register

Contact

Address	The Warehouse 54-57 Allison Street Birmingham B5 5TH
Phone	07778335214
Email	suddenproductions@yahoo.co.uk
Website	www.suddenproductions.co.uk

Activities

Objects: A.PROMOTE,IMPROVE DEVELOP AND MAINTAIN PUBLIC EDUCATION IN AND APPRECIATION OF THE ART AND SCIENCE OF DRAMA IN ALL ITS ASPECTS BY THE PRESENTATION IN PUBLIC OF PLAYS AND BY SUCH OTHER WAYS AS THE SOCIETY THROUGH ITS COMMITTEE SHALL FROM TIME TO TIME DETERMINE.B.TO HELP AND EDUCATE YOUNG PEOPLE TO DEVELOP THEIR PHYSICAL MENTAL AND SPIRITUAL CAPACITIES SO THAT THEY MAY GROW TO FULL MATURITY AS INDIVIDUALS AND MEMBERS OF SOCIETY.

Activities: Community work, stage plays, short films and other educational projects with young people.

Classification

- **How:** Provides Services
- **What:** Education/training, Arts/culture/heritage/science
- **Who:** Children/young People

Geography

- Birmingham City
- Coventry City
- Dudley
- Sandwell
- Walsall

Finances

Period end	Income	Expenditure	Assets	Employees
2025-04-30	£153,950	£132,772	-	-
2024-04-30	£130,653	£149,837	-	-
2023-04-30	£113,865	£90,658	-	-
2022-04-30	£49,132	£51,698	-	-
2021-04-30	£34,020	£33,348	-	-

Trustees

Name	Role	Appointed
NEIL HALLETT	Chair	
CHRISTINE BRUETON		
STEPHEN BRADBURY		2013-09-27

SUDDEN PRODUCTIONS

England & Wales - Charity number 1018887

Accounts



Report of the trustees

Sudden Productions

Year ended April 2025

My Grandparents, My Parents and I

Celebrating Windrush Legacy

SUDDEN
PRODUCTIONS

Sudden Productions

www.suddenproductions.co.uk

Registered Charity No 1018887

Sudden Productions has been in existence since 1993 and has been committed to bringing its productions to those who have limited access to conventional theatre and film-making in Birmingham and the West Midlands. The charity's community programmes deliver social, emotional, physical and educational benefits to young participants. Our core sectors are:

Inclusion: Working with marginalized groups with a keen focus on integration and supporting social cohesion;

Education: Developing confidence and communication, and improving behaviour and attitudes to learning;

Health: Effecting positive improvements in mental and physical health;

Professional Development: Helping to develop the careers of young talents.

We have a track record of educational plays, films, podcasts, and workshops. Sudden Productions work exclusively with young & vulnerable people and produce projects with a focus on the difficult issues and challenges that young people face today. Over the past years we have covered important issues such as racism, homelessness, juvenile delinquency, bullying, unemployment, etc.

Workshops and performances we offer schools, voluntary groups, youth centres are entirely free. We work with young people attending rehab units, probation centres, pupil referral units, social services, and young people living in temporary accommodation each year and create partnerships with voluntary organisations, youth offending teams, local authorities, statutory bodies, etc on each project we deliver. We create strong partnerships with each organisation which decide to take part in our programs and offer this school or youth centre up to four sessions per year to maximise the impact of our work.

Legal and administrative information

Objectives and activities: • Promote, improve develop and maintain public education in, and appreciation of, the art and science of drama in all its aspects by the presentation in public of plays and by such other ways as the society through its committee shall from time to time determine. • Educate young people in order to develop their physical, mental and spiritual capacities so that they may grow to full maturity as individuals and as members of society.

Status

Since 1993, Sudden Productions has been a registered charity governed by its memorandum and articles of association (New constitution adopted on the 10th of August 2008).

Trustees

Neil Hallett
Christine Brueton
Stephen Bradbury

Registered Office

The Warehouse
54-57 Allison Street
Birmingham
B5 5TH

STRATEGIC OBJECTIVES

Provide children, youth & the community with outstanding experiences in all aspects of live theatre production and creative activities.

Deliver creative outreach programs for children & young people in priority schools, neighbourhoods, and care facilities.

Nurture healthy well-being through inclusive messaging about timely social issues such as bullying, domestic abuse, appreciation for diversity, mental health issues and creative problem-solving.

Explore and develop relationships with strategic partners to ensure program sustainability.

Create and develop interactive curriculum based programs with arts professionals and education consultants.

Implement these programs and initiatives so that everyone can feel safe to learn in a fun and nurturing environment.

Highlights and acknowledgment from the Director

It is my pleasure to present my 2024-25 Report. It is an incredibly satisfying thing to be able to look back at where we were just after the pandemic and now to look at where we are and then to look forward to what we believe is an exciting future. Thank you to all our friends, funders, benefactors and supporters for all you have done to help make this year a year of great progress and a segue to even better things to come. All in all, 2024-25 was a challenging but rewarding year, delivering an ambitious, artistically diverse program that engaged and entertained young audiences and the community.



My Grandparents, My Parents and I at the Midlands Arts Centre

FINANCIAL PERFORMANCE

We are proud of our financial results this year which enable us to continue to maintain and invest into our hardworking dedicated artists who deliver our youth theatre programs. Although we have achieved a positive result, we cannot achieve our goals alone, therefore we acknowledge the support from all our partners and community groups across Birmingham which welcomed us and held events with us! We also must thank all of those who attended performances thus helping to support our company. This year we continued to be committed to produce more tours and projects in more youth organisations and schools!

INCOME ROSE BY 18% THIS YEAR

The dedication of our supporters means everything to Sudden Productions. While our public performances generate revenue for the organisation, generous donations allow us to plan into the future knowing there is an element of funding security. Our

previous fundraising efforts and grant applications were successful in securing project funding as well as unrestricted financial support for the charity. These funds were used to deliver our educational programs and improve production quality. We will keep on making funding a priority for 2025-2026

EDUCATIONAL & AWARENESS PERFORMANCES AND WORKSHOPS

136 PERFORMANCES & WORKSHOPS WERE DELIVERED THROUGH 7 PROJECTS



St Basils' Pop Up Theatre: Artwork for Performance at St Basils' Milner Court

Each year Sudden Productions produces and presents an artistic program of educational theatre projects that speak to the world around us and connect with young audiences and diverse communities across Birmingham and the West Midlands. We aim to amplify artists, voices and stories from diverse communities and, in doing so, foster richer engagement with audiences. We also champion and inspire the talent of the next generation of artists through our shadow artists learning programs. Through our activities, programs and partnerships, we work to achieve a robust and sustainable financial, operational and governance foundation. In everything we do, we seek to enrich our community by developing and presenting transformative, entertaining and diverse theatre experiences that showcase artists, connect with young audiences and generate conversation, thought and reflection.

Sudden Productions scheduled 136 educational performances or workshops to secondary schools & youth organisations in 2024/25. As a carefully vetted and approved organisation, ensuring a strong relationship with school boards as well as youth & community leaders is key to our success.

6,024 YOUNG PEOPLE ATTENDED OUR PROJECTS THIS YEAR

This year, we worked on *ISOLATED* (Loneliness & Youth Mental Health), *WHAT MATTERS* (Anti-Racism • Human Rights and Gender Equality • Equality, Diversity and Inclusion), *REWIND AND FAST FORWARD* (Domestic Abuse Awareness) and *MY GRANDPARENTS, MY PARENTS AND I & MY SONGS OF WINDRUSH* which celebrate the Windrush legacy.

MONITORING FORMS SHOWED 96% AUDIENCE SATISFACTION

In schools, we will continue to work closely with principals and school representatives to assist Sudden Productions in reaching schools in underserved communities with positive mental health messaging in *ISOLATED* for example or support to build healthy relationships with *REWIND AND FAST FORWARD* or messaging on inclusion & diversity in *WHAT MATTERS* or *MY GRANDPARENTS, MY PARENTS AND I*.

92% OF PARTICIPANTS SAID THEY HAVE A DEEPER AWARENESS OF THE ISSUE AT HAND



Rewind and Fast Forward at the Midlands Arts Centre

POP UP THEATRE PROGRAMS

For the past few years, Sudden Productions Pop Up Theatre Programs have provided a nurturing environment for young & vulnerable people across Birmingham.



Maryvale Pop Up Theatre: Their stage production "Burnt Toast Coffee Shop"

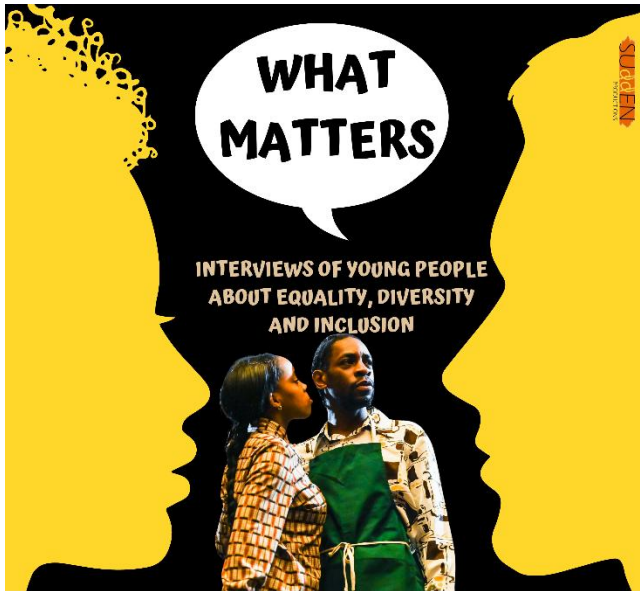
Our Pop Up Theatre Programs inspire a group of 15 to 25 participants to create original, innovative & spontaneous theatre through a series of workshops delivered directly at their local community centre. Their production are always full of life, colour and delight and are celebrated during a community performance which brings together local residents. Our Pop Up Theatre programs not only foster artistic expression but also encourage inclusivity, teamwork, confidence and creative problem-solving.

Our strong partnerships with Maryvale Community Centre, St Basils Milner Court and the Sanctuary enable Sudden Productions' arts educators to deliver enriching workshops to young and/or vulnerable people through up ten months programs for some organisations.

EMPLOYMENT AND VOLUNTEERS

In addition to offering employment to emerging actors and art educators, Sudden Productions also provides an opportunity for young adults to volunteer & be part of our projects. In the past year, 15 volunteers have learnt new skills and enjoyed supporting our professional and emerging artists with delivering our programs.

SUDDEN PRODUCTIONS EMPLOYED 17 FREELANCE STAFF IN 2024-25 & SUPPORTED 6 SHADOW ARTISTS



Podcast of What Matters

96% OF ARTISTS WHO WORKED ON OUR PROJECTS WERE WEST-MIDLANDS OR BIRMINGHAM BASED

VISION FOR THE FUTURE

Our passion for the performing arts drives our positive spirit and means we think and act with energy and curiosity in the best interests of the company and the community. We show respect by embracing diversity and actively fostering an inclusive environment where everyone feels valued and inspired to contribute. We approach our work courageously and creatively, striving to bring out the best in everyone and everything we do. We work as one team, collaborating and taking joint responsibility to achieve our vision.

Next year we want to RESEARCH, DISCOVER AND DEVELOP diverse new stories; REACH more young audiences to share our stories; DEVELOP inter-generational work to build stronger communities; DELIVER high quality and accessible education and youth programs; BUILD sustainable relationships with community & local organisations.

64% OF ARTISTS WHO WORKED ON OUR PROJECTS IDENTIFIED AS FROM DIVERSE ETHNIC MINORITIES

THANKS



Workshop with young people at the Sanctuary, Castle Vale Youth Centre

It is always hard to record thanks to people without missing someone important out so a general thanks is possibly a better option! I will start with our Board of Trustees. Thank you all for your commitment to your role as trustee. Thank you to all funders for your continued support, not just financially but also all the moral support given to our staff when you visit our projects. Thank you to all staff, artists, young talents! Keep up the excellent work. You are the heart and soul of our theatre company and I personally look forward to enjoying yet another year of growth and success!

Without the dedication of the board, staff and volunteers, Sudden Productions would not have reached over 6,024 children in the past year alone. I can't thank everyone enough for their unwavering support.

We lead with kindness and compassion. I truly believe this is returned to the organisation a million times over as we help launch young careers, support the creativity of art educators, create opportunities for development for staff and reach young people and families with inspiring programs. It is an extreme pleasure to share the joy of Sudden Productions with so many as we look forward to many more years of enriching the lives of young people through the magic of theatre and the arts. We extend our heartfelt gratitude to everyone who has contributed to our success and invite the community to join us in the upcoming year's exciting endeavours.

With Gratitude,

Nowell Wallace

Company Director

Thank you to our funders Sudden Productions is grateful to our partners, artists and volunteers who make our projects happen! Sudden Productions is also very grateful for the continued support of donors including:

- | | | |
|---|--|--|
| THE GEORGE HENRY COLLINS CHARITY | THE HEART OF ENGLAND FOUNDATION | THE W.E.D CHARITABLE TRUST |
| THE SABINA SUTHERLAND CHARITABLE TRUST | THE BIRMINGHAM DISTRICT NURSING CHARITABLE TRUST | THE SIR JOHN MIDDLEMORE CHARITABLE TRUST |
| THE WILLIAM DUDLEY TRUST | THE RATCLIFF FOUNDATION | THE EVA RECKITT TRUST |
| THE 29TH MAY 1961 CHARITABLE TRUST | THE KEITH AND JOAN MINDELSONH TRUST | THE DOUGLAS AND ROGER TURNER TRUST |
| THE BISHOP OF BIRMINGHAM CHARITABLE TRUST | THE RICHARD KILCUPPE CHARITABLE TRUST | THE BHSF MEDICAL CHARITY AND WELFARE TRUST |
| THE BIRMINGHAM COMMONGOOD TRUST | THE MILLS AND REEVE CHARITABLE TRUST | THE H D H WILLS 1965 CHARITABLE TRUST |
| THE HOPKINS AND SAYER CHARITY | THE COOP FUND | THE PEDDIMORE COMMUNITY FUND |
| THE WILLIAM A CABURY CHARITABLE TRUST | THE BARCHESTER CHARITABLE FOUNDATION | THE LORDS MAYOR OF BIRMINGHAM'S CHARITY |
| THE COLE CHARITABLE TRUST | THE LORD AUSTIN TRUST | THE D'OYLY CARTE CHARITABLE TRUST |
| THE EVESON TRUST | THE GRIMMITT TRUST | THE SHELDON TRUST |
| THE EDWARD CADBURY TRUST | BIRMINGHAM CITY COUNCIL | THE DORIS PACEY CHARITABLE TRUST |
| THE ARCHER TRUST | THE GIBBS TRUST | THE N SMITH CHARITABLE SETTLEMENT |
| THE ALCHEMY FOUNDATION | THE PATRICK TRUST | THE BLAKEMORE FOUNDATION |
| THE WINDRUSH DAY GRANT | THE EVA RECKITT TRUST | THE ALBRIGHT GRIMLEY CHARITY |
| THE BARON DAVENPORT CHARITY | THE GJW TURNER TRUST | THE DAVID R & ROSEMARY BELL TRUST |
| THE MICHAEL MARSH CHARITABLE TRUST | THE BORIS KARLOFF CHARITABLE FOUNDATION | THE ALLAN AND NESTA FERGUSON TRUST |
| | THE ARTS COUNCIL OF ENGLAND | |

SCHOOLS & YOUTH ORGANISATIONS VISITED

Moreton School, Castle Vale Youth Centre, St Basils Milner Court, Greenwood School, Arden Academy, Stonehouse Gang, All Saints Youth Project, North Birmingham Academy, Orminston Academy, Birmingham Settlement Nature & Wellbeing Centre, Maryvale Community Centre, Aston Manor, Erdington Academy, Arden Academy, Ninestiles, Ormiston New Academy, Bristnall Hall Academy, Ninestiles Academy, Birmingham Children Services, West Midlands Police, Riverside Vocational College, Birmingham Children Trust, Motivatemetee, Compass Birmingham Mental Health Support Team, NHS Referral Unit Birmingham, Trident Group, Anawim, Green Square Accord, Ascension Stirchley, Harborne academy, George dixon academy, Aldersley high school, Bishop challoner catholic college, Waverley studio college, Cadbury college, etc

Cross-Cutting Themes



Diversity, equity, inclusion, and accessibility



Financial growth and stability



Partnerships and alliances



Research and innovation

Sudden Productions

Charity No. 1018887

Trustees' Report and Unaudited Accounts

30 April 2025

Sudden Productions
Contents

	Pages
Trustees' Annual Report	2
Independent Examiner's Report	3
Statement of Financial Activities	4
Balance Sheet	5
Notes to the Accounts	6 to 11
Detailed Statement of Financial Activities	12 to 13

**Sudden Productions
Trustees Annual Report**

The trustees present their report with the unaudited financial statements of the charity for the year ended 30 April 2025.

REFERENCE AND ADMINISTRATIVE DETAILS

Charity No. 1018887

Trustees

The following trustees served during the year:

S. Bradbury

C. Brueton

N. Hallett

Accountants

BVSC

Latham House

33-34 Paradise Street

Birmingham

B1 2AJ

Statement of trustees' responsibilities in relation to the financial statements

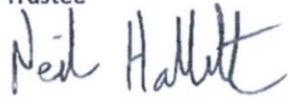
The charity trustees are responsible for preparing a trustees' annual report and financial statements in accordance with applicable law and United Kingdom Accounting Standards (United Kingdom Generally Accepted Accounting Practice).

The trustees are responsible for keeping proper accounting records that disclose with reasonable accuracy at any time the financial position of the charity and to enable them to ensure that the financial statements comply with the Charities Act 2011, the applicable Charities (Accounts and Reports) Regulations, and the provisions of the Trust deed. The Trustees are also responsible for safeguarding the assets of the charity and hence taking reasonable steps for the prevention and detection of fraud and other irregularities.

Signed on behalf of the charity's trustees

N. Hallett

Trustee



17-1-2026

Sudden Productions
Independent Examiners Report

Independent Examiner's Report to the trustees of Sudden Productions

I report to the trustees on my examination of the financial statements of Sudden Productions for the year ended 30 April 2025.

Responsibilities and basis of report

As the charity's trustees you are responsible for the preparation of the financial statements in accordance with the requirements of the Charities Act 2011 ('the Act').

I report in respect of my examination of the charity's financial statements carried out under section 145 of the 2011 Act and in carrying out my examination I have followed all the applicable Directions given by the Charity Commission under section 145(5)(b) of the Act.

Independent examiner's statement

I have completed my examination. I can confirm that no material matters have come to my attention in connection with the examination giving me cause to believe that in any material respect:

- the accounting records were not kept in respect of the charity as required by section 130 of the Act; or
- the financial statements do not accord with those records; or
- the financial statements do not comply with the applicable requirements concerning the form and content of financial statements set out in the Charities (Accounts and Reports) Regulations 2008 other than any requirement that the financial statements give a 'true and fair' view which is not a matter considered as part of an independent examination.

I have no concerns and have come across no other matters in connection with the examination to which attention should be drawn in this report in order to enable a proper understanding of the financial statements to be reached.



Andy Hopkins
BVSC
Latham House
33-34 Paradise Street
Birmingham

B1 2AJ
17 January 2026

Sudden Productions
Statement of Financial Activities
for the year ended 30 April 2025

	Notes	Unrestricted funds 2025 £	Restricted funds 2025 £	Total funds 2025 £	Total funds 2024 £
Income and endowments from:					
Donations and legacies	3	28,500	118,856	147,356	129,831
Charitable activities	4	6,594	-	6,594	822
Total		35,094	118,856	153,950	130,653
Expenditure on:					
Other	5	5,734	127,038	132,772	149,835
Total		5,734	127,038	132,772	149,835
Net gains on investments		-	-	-	-
Net income/(expenditure)	6	29,360	(8,182)	21,178	(19,182)
Transfers between funds		(28,158)	28,158	-	-
Net income/(expenditure) before other gains/(losses)		1,202	19,976	21,178	(19,182)
Other gains and losses					
Net movement in funds		1,202	19,976	21,178	(19,182)
Reconciliation of funds:					
Total funds brought forward		2,956	-	2,956	22,138
Total funds carried forward		4,158	19,976	24,134	2,956

**Sudden Productions
Balance Sheet**

at 30 April 2025

Charity No. 1018887

	2025 £	2024 £
Current assets		
Cash at bank and in hand	24,674	3,496
	<u>24,674</u>	<u>3,496</u>
Creditors: Amount falling due within one year	8 (540)	(540)
Net current assets	24,134	2,956
Total assets less current liabilities	24,134	2,956
Net assets excluding pension asset or liability	<u>24,134</u>	<u>2,956</u>
Total net assets	<u>24,134</u>	<u>2,956</u>
 The funds of the charity		
Restricted funds	9	
Restricted income funds	19,976	-
	<u>19,976</u>	<u>-</u>
Unrestricted funds	9	
General funds	4,158	2,956
	<u>4,158</u>	<u>2,956</u>
Reserves	9	
Total funds	<u>24,134</u>	<u>2,956</u>

Approved by the trustees on

And signed on their behalf by:

N. Hallett

Trustee

Neil Hallett

17-1-2026

Sudden Productions
Notes to the Accounts

for the year ended 30 April 2025

1 Accounting policies

Basis of preparation

The financial statements have been prepared in accordance with Statement of Recommended Practice: Accounting and Reporting by Charities preparing their accounts in accordance with the Financial Reporting Standard applicable in the UK and Republic of Ireland (FRS 102) issued on 16 July 2014 and the Financial Reporting Standard applicable in the United Kingdom and Republic of Ireland (FRS 102) and the Charities Act 2011.

Change in basis of accounting or to previous accounts

There has been no change to the accounting policies (valuation rules and method of accounting) since last year and no changes have been made to accounts for previous years.

Fund accounting

Unrestricted funds	These are available for use at the discretion of the trustees in furtherance of the general objects of the charity.
Designated funds	These are unrestricted funds earmarked by the trustees for particular purposes.
Revaluation funds	These are unrestricted funds which include a revaluation reserve representing the restatement of investment assets at their market values.
Restricted funds	These are available for use subject to restrictions imposed by the donor or through terms of an appeal.

Income

Recognition of income	Income is included in the Statement of Financial Activities (SoFA) when the charity becomes entitled to, and virtually certain to receive, the income and the amount of the income can be measured with sufficient reliability.
Income with related expenditure	Where income has related expenditure the income and related expenditure is reported gross in the SoFA.
Donations and legacies	Voluntary income received by way of grants, donations and gifts is included in the the SoFA when receivable and only when the Charity has unconditional entitlement to the income.
Tax reclaims on donations and gifts	Income from tax reclaims is included in the SoFA at the same time as the gift/donation to which it relates.
Donated services and facilities	These are only included in income (with an equivalent amount in expenditure) where the benefit to the Charity is reasonably quantifiable, measurable and material.
Volunteer help	The value of any volunteer help received is not included in the accounts.
Investment income	This is included in the accounts when receivable.
Gains/(losses) on revaluation of fixed assets	This includes any gain or loss resulting from revaluing investments to market value at the end of the year.
Gains/(losses) on investment assets	This includes any gain or loss on the sale of investments.

Sudden Productions

Notes to the Accounts

Expenditure

Recognition of expenditure	Expenditure is recognised on an accruals basis. Expenditure includes any VAT which cannot be fully recovered, and is reported as part of the expenditure to which it relates.
Expenditure on raising funds	These comprise the costs associated with attracting voluntary income, fundraising trading costs and investment management costs.
Expenditure on charitable activities	These comprise the costs incurred by the Charity in the delivery of its activities and services in the furtherance of its objects, including the making of grants and governance costs.
Grants payable	All grant expenditure is accounted for on an actual paid basis plus an accrual for grants that have been approved by the trustees at the end of the year but not yet paid.
Governance costs	These include those costs associated with meeting the constitutional and statutory requirements of the Charity, including any audit/independent examination fees, costs linked to the strategic management of the Charity, together with a share of other administration costs.
Other expenditure	These are support costs not allocated to a particular activity.

Taxation

The charity is exempt from tax on its charitable activities.

Trade and other debtors

Trade and other debtors are recognised at the settlement amount due after any trade discount offered. Prepayments are valued at the amount prepaid net of any trade discounts due.

Trade and other creditors

Short term creditors are measured at the transaction price. Other creditors and provisions are recognised where the charity has a present obligation resulting from a past event that will probably result in the transfer of funds to a third party and the amount due to settle the obligation can be measured or estimated reliably. Creditors and provisions are normally recognised at their settlement amount after allowing for any trade discounts due.

Pension costs

The charity operates a defined contribution plan for its employees. A defined contribution plan is a pension plan under which the charity pays fixed contributions into a separate entity. Once the contributions have been paid the charity has no further payments obligations. The contributions are recognised as expenses when they fall due. Amounts not paid are shown in accruals in the balance sheet. The assets of the plan are held separately from the charity in independently administered funds.

Sudden Productions
Notes to the Accounts

2 Statement of Financial Activities - prior year

	Unrestricted funds 2024 £	Restricted funds 2024 £	Total funds 2024 £
Income and endowments from:			
Donations and legacies	27,800	102,031	129,831
Charitable activities	-	822	822
Total	<u>27,800</u>	<u>102,853</u>	<u>130,653</u>
Expenditure on:			
Charitable activities	24,629	125,208	149,837
Total	<u>24,629</u>	<u>125,208</u>	<u>149,837</u>
Net income	<u>3,171</u>	<u>(22,355)</u>	<u>(19,184)</u>
Transfers between funds	(9,608)	9,608	-
Net income before other gains/(losses)	<u>(6,437)</u>	<u>(12,747)</u>	<u>(19,184)</u>
Other gains and losses:			
Net movement in funds	<u>(6,437)</u>	<u>(12,747)</u>	<u>(19,184)</u>
Reconciliation of funds:			
Total funds brought forward	9,393	12,747	22,140
Total funds carried forward	<u>2,956</u>	<u>-</u>	<u>2,956</u>

3 Income from donations and legacies

	Unrestricted £	Restricted £	Total 2025 £	Total 2024 £
Donations and Grants	28,500	118,856	147,356	129,831
	<u>28,500</u>	<u>118,856</u>	<u>147,356</u>	<u>129,831</u>

4 Income from charitable activities

	Unrestricted £	Total 2025 £	Total 2024 £
Earned Income	6,594	6,594	822
	<u>6,594</u>	<u>6,594</u>	<u>822</u>

Sudden Productions
Notes to the Accounts

5 Other expenditure

	Unrestricted	Restricted	Total 2025	Total 2024
	£	£	£	£
Employee costs	4,176	103,219	107,395	134,601
Motor and travel costs	0	4,583	4,583	6,244
Premises costs	(490)	5,109	4,619	4,495
General administrative costs	1,388	14,127	15,515	3,955
Legal and professional costs	660	-	660	540
	<u>5,734</u>	<u>127,038</u>	<u>132,772</u>	<u>149,835</u>

6 Net income/(expenditure) before transfers

	2025	2024
	£	£
This is stated after charging:		
Independent Examiner's fee	540	540

7 Staff costs

	2025	2024
Salaries and wages	33,973	37,558
Social security costs	3,726	-
Pension costs	1,667	-
	<u>39,366</u>	<u>37,558</u>

No employee received emoluments in excess of £60,000.

The average monthly number of full time equivalent employees during the year was as follows:

	2025	2024
	Number	Number
Project Manager	1	1
	<u>1</u>	<u>1</u>

8 Creditors:

amounts falling due within one year

	2025	2024
	£	£
Accruals	540	540
	<u>540</u>	<u>540</u>

Sudden Productions
Notes to the Accounts

9 Movement in funds

	At 1 May 2024	Incoming resources (including other gains/losses) £	Resources expended £	Gross transfers £	At 30 April 2025 £
Restricted funds:					
Restricted income funds:					
My Songs of Windrush	-	24,000	(4,023)	-	19,977
Isolated	-	5,201	(13,441)	8,240	0
Rewind and Fast Forward	-	20,885	(29,591)	8,706	0
What Matters	-	16,250	(17,472)	1,222	0
Maryvale Pop Up Theatre	-	15,700	(16,680)	980	0
My Grandparents, Mr Parents and I	-	15,000	(23,898)	8,898	0
Urban Theatre Project: Castle Vale	-	2,000	(2,111)	111	0
St Basils Pop Up Theatre	-	19,820	(19,821)	1	0
Total	-	118,856	(127,038)	28,158	19,976
Unrestricted funds:					
General funds	2,956	35,094	(5,734)	(28,158)	4,158
Total funds	2,956	153,950	(132,772)	-	24,134

Purposes and restrictions in relation to the funds:

Restricted funds:

My Songs of Windrush

Isolated

Rewind and Fast Forward

What Matters

Maryvale Pop Up Theatre

My Grandparents, Mr

Parents and I

Urban Theatre Project: Castle

Vale

St Basils Pop Up Theatre

10 Analysis of net assets between funds

	Unrestricted funds £	Total £
Net current assets	24,134	24,134
	24,134	24,134

Sudden Productions
Notes to the Accounts

11 Reconciliation of net debt

	At 1 May 2024 £	Cash flows £	At 30 April 2025 £
Cash and cash equivalents	3,496	21,178	24,674
	<u>3,496</u>	<u>21,178</u>	<u>24,674</u>
Net debt	<u>3,496</u>	<u>21,178</u>	<u>24,674</u>

12 Commitments

Operating lease commitments

Annual commitments under non-cancellable operating leases are as follows:

	2025 Land and buildings £	2025 Other £	2024 Land and buildings £	2024 Other £
Operating leases with expiry date:				

Pension commitments

	2025 £	2024 £
The pension cost charge to the charity amounted to:	<u>1,667</u>	<u>-</u>

Sudden Productions
Detailed Statement of Financial Activities
for the year ended 30 April 2025

	Unrestricte d funds 2025 £	Restricted funds 2025 £	Total funds 2025 £	Total funds 2024 £
Income and endowments from:				
Donations and legacies				
Donations and Grants	28,500	118,856	147,356	129,831
	<u>28,500</u>	<u>118,856</u>	<u>147,356</u>	<u>129,831</u>
Charitable activities				
Earned Income	6,594	-	6,594	822
	<u>6,594</u>	<u>-</u>	<u>6,594</u>	<u>822</u>
Total income and endowments	35,094	118,856	153,950	130,653
Expenditure on:				
Employee costs				
Salaries/wages	4,000	29,973	33,973	37,558
Employer's NIC	0	3,726	3,726	-
Pension costs	0	1,667	1,667	-
Staff training	180	-	180	703
Temporary staff	(3)	67,852	67,849	96,340
	<u>4,176</u>	<u>103,219</u>	<u>107,395</u>	<u>134,601</u>
Motor and travel costs				
Travel and subsistence	0	4,583	4,583	6,244
	<u>0</u>	<u>4,583</u>	<u>4,583</u>	<u>6,244</u>
Premises costs				
Rent	(490)	5,109	4,619	4,495
	<u>(490)</u>	<u>5,109</u>	<u>4,619</u>	<u>4,495</u>
General administrative costs, including depreciation and amortisation				
Equipment expensed	850	-	850	-
Equipment leasing and hire charges	0	6,017	6,017	-
General insurances	350	3,243	3,593	2,707
Software, IT support and related costs	188	4,867	5,055	1,788
Sundry expenses	-	-	-	(540)
	<u>1,388</u>	<u>14,127</u>	<u>15,515</u>	<u>3,955</u>
Legal and professional costs				
Audit/Independent examination fees	540	-	540	-
Accountancy and bookkeeping	120	-	120	540
	<u>660</u>	<u>-</u>	<u>660</u>	<u>540</u>
Total of expenditure of other costs	5,734	127,038	132,772	149,835
Total expenditure	5,734	127,038	132,772	149,835

Sudden Productions
Detailed Statement of Financial Activities

Net gains on investments	-	-	-	-
Net income/(expenditure)	29,360	(8,182)	21,178	(19,182)
Transfers between funds	(28,158)	28,158	-	-
Net income/(expenditure) before other gains/(losses)	1,202	19,976	21,178	(19,182)
Other Gains	-	-	-	-
Net movement in funds	1,202	19,976	21,178	(19,182)
Reconciliation of funds:				
Total funds brought forward	2,956	-	2,956	22,138
Total funds carried forward	4,158	19,976	24,134	2,956

Treasurer's report

Financial review: Thanks to an ambitious strategy and programme in 2025, we secured larger grants from Birmingham City Council, the Arts Council of Council and the Ministry of Housing, Communities and Local Government. Those large grants, added to continuous support from our regular supporters, resulted in a significant rise in income from 2024 (income of £130,653) to 2025 (income of £153,950). We reached more schools and youth organisations, we were able to offer several sessions per projects which would use various creative contents (such as a theatre performance, the screening of a short film, a podcast recording, or participatory workshop...). We managed to increase our offer thanks to the fantastic work and dedication of our project director and the artists involved. The project director in charge of coordinating all aspects of all projects and running the company was paid £33,973 for the year. Further £67,852 were used to pay fees of creative teams, facilitators, and actors.


It will be paramount for Sudden Productions to raise larger finances in 2026 in order to support our ambitious strategic plan for the upcoming three years which aims to research and develop new projects, support our teams of experienced and emerging artists, reach more young audiences more often, develop inter-generational work and build stronger communities through high quality and accessible theatre programs. Interest in and demand for the organisation's live work continues to grow, and so funding should be raised in order to support this interest.

Reserves Policy: Income and expenditure of the charity fluctuates according to the pattern of grants. Artists are hired per project and financial commitments are limited. Unrestricted funds are used to plan for three months core and running costs.

Statement of Trustees' responsibilities: The Trustees are responsible for preparing the annual report and financial statements for each financial year, in accordance with the Charities Act 2011, the Charities (Accounts and Reports) Regulations 2008 and the United Kingdom Generally Accepted Accounting Practice, which give a true and fair view of the incoming resources and application of the resources of the group during the year and the charity's state of affairs at the end of the financial year. In preparing those financial statements, the Trustees are required to: select suitable accounting policies and then apply them consistently; make judgements and estimates that are reasonable and prudent; state whether applicable accounting standards and statements of recommended practice had been followed, subject to any material departures disclosed and explained in the financial statements; prepare the accounts on the going concern basis unless it is inappropriate to presume that the charity will continue in operation. These guidelines run alongside the Company's constitution.

Signed

Dated: 17/01/2026



Trustees' name: Neil Hallett

SUDDEN PRODUCTIONS

England & Wales - Charity number 1018887

Accounts



Report of the trustees

Sudden Productions

Year ended April 2024

Rewind and Fast Forward

Domestic Violence Awareness

SUdden
PRODUCTIONS

Sudden Productions

www.suddenproductions.co.uk

Registered Charity No 1018887

Sudden Productions has been in existence since 1993 and has been committed to bringing its productions to those who have limited access to conventional theatre and film-making in Birmingham and the West Midlands. The charity's community programmes deliver social, emotional, physical and educational benefits to young participants. Our core sectors are:

Inclusion: Working with marginalized groups with a keen focus on integration and supporting social cohesion;

Education: Developing confidence and communication, and improving behaviour and attitudes to learning;

Health: Effecting positive improvements in mental and physical health;

Professional Development: Helping to develop the careers of young talents.

We have a track record of educational plays, films, podcasts, and workshops. Sudden Productions work exclusively with young & vulnerable people and produce projects with a focus on the difficult issues and challenges that young people face today. Over the past years we have covered important issues such as racism, homelessness, juvenile delinquency, bullying, unemployment, etc.

Workshops and performances we offer schools, voluntary groups, youth centres are entirely free. We work with young people attending rehab units, probation centres, pupil referral units, social services, and young people living in temporary accommodation each year and create partnerships with voluntary organisations, youth offending teams, local authorities, statutory bodies, etc on each project we deliver. We create strong partnerships with each organisation which decide to take part in our programs and offer this school or youth centre up to four sessions per year to maximise the impact of our work.

Legal and administrative information

Objectives and activities: • Promote, improve develop and maintain public education in, and appreciation of, the art and science of drama in all its aspects by the presentation in public of plays and by such other ways as the society through its committee shall from time to time determine. • Educate young people in order to develop their physical, mental and spiritual capacities so that they may grow to full maturity as individuals and as members of society.

Status

Since 1993, Sudden Productions has been a registered charity governed by its memorandum and articles of association (New constitution adopted on the 10th of August 2008).

Trustees

Neil Hallett
Christine Brueton
Stephen Bradbury

Registered Office

The Warehouse
54-57 Allison Street
Birmingham
B5 5TH

STRATEGIC OBJECTIVES

Provide children, youth & the community with outstanding experiences in all aspects of live theatre production and creative activities.

Deliver creative outreach programs for children & young people in priority schools, neighbourhoods, and care facilities.

Nurture healthy well-being through inclusive messaging about timely social issues such as bullying, domestic abuse, appreciation for diversity, mental health issues and creative problem-solving.

Explore and develop relationships with strategic partners to ensure program sustainability.

Create and develop interactive curriculum based programs with arts professionals and education consultants.

Implement these programs and initiatives so that everyone can feel safe to learn in a fun and nurturing environment.

Highlights and acknowledgment from the Director

I am delighted to present the Director's report for this year ended April 2024.

Our mission is to inspire and entertain young audiences through quality theatrical productions and educational programs. With the support of our dedicated team, enthusiastic volunteers and generous donors, we have been able to make a significant impact on the lives of young people and families from all communities. Included in this direction, is celebrating diversity, inclusion and arts equity that Sudden Productions strives for in the representation of different cultures, experiences and orientations.



My Grandparents, My Parents and I

EDUCATIONAL & AWARENESS SHOWS

More than 6,000 young people experienced our workshops, programs and performances in 2023-24.

Sudden Productions scheduled 140 educational shows or workshops to secondary schools & youth organisations in 2023/24. As a carefully vetted and approved organisation, ensuring a strong relationship with school boards as well as youth & community leaders is key to our success.

This year, we worked on *ISOLATED* (Loneliness & Youth Mental Health), *WHAT MATTERS* (Anti-Racism • Human Rights and Gender Equality • Equality, Diversity and Inclusion), *LOVE TRAP* (Online Grooming Awareness), *REWIND AND FAST FORWARD* (Domestic

Abuse Awareness) and *MY GRANDPARENTS, MY PARENTS AND I* which toured in June 2023 and 2024, commemorating the 75th & 76th anniversary of the MV Empire Windrush's arrival into the UK.

In schools, we will continue to work closely with principals and school representatives to assist Sudden Productions in reaching schools in underserved communities with positive mental health messaging in *ISOLATED* for example or support to build healthy relationships with *REWIND AND FAST FORWARD* or messaging on inclusion & diversity in *WHAT MATTERS* or *MY GRANDPARENTS, MY PARENTS AND I*.



Rewind and Fast Forward (workshop)

POP UP THEATRE PROGRAMS

For the past two years, Sudden Productions Pop Up Theatre Programs have provided a nurturing environment for young & vulnerable people across Birmingham.

Our Pop Up Theatre Programs inspire a group of 10 to 25 participants to create original, innovative & spontaneous theatre through a series of workshops delivered directly at their local community centre. Their production are always full of life, colour and delight and are celebrated during a community performance which will bring together local residents. Our Pop Up Theatre programs not only foster artistic expression but also encourage inclusivity, teamwork, confidence and creative problem-solving.

Our strong partnerships with Maryvale Community Centre, St Basils, Hawkesley Community Centre and the Sanctuary enable Sudden Productions' arts educators to deliver enriching workshops to young and/or vulnerable people through up ten months programs for some organisations.



Rewind and Fast Forward (Film)

EMPLOYMENT AND VOLUNTEERS

Sudden Productions employed 20 freelance staff through our performances, workshops and art education programs in 2023-24.

In addition to offering employment to emerging actors and art educators, Sudden Productions also provides an opportunity for young adults to volunteer & be part of our projects. In the past year, 15 volunteers have learnt new skills and enjoyed supporting our professional and emerging artists with delivering our programs.



What Matters

FINANCIAL PERFORMANCE

The dedication of our supporters means everything to Sudden Productions. While our public performances generate revenue for the organisation, generous donations allow us to plan into the future knowing there is an element of funding security. Our previous fundraising efforts and grant applications were successful in securing project funding as well as unrestricted financial support for the charity. These funds were used to deliver our educational programs and improve production quality. We will keep on making funding a priority for 2024-2025



Isolated

Without the dedication of the board, staff and volunteers, Suitcase Theatre would not have reached over 5,000 children in the past year alone. I can't thank everyone enough for their unwavering support.

We lead with kindness and compassion. I truly believe this is returned to the organisation a million times over as we help launch young careers, support the creativity of art educators, create opportunities for development for staff and reach young people and families with inspiring programs. It is an extreme pleasure to share the joy of Sudden Productions with so many as we look forward to many more years of enriching the lives of young people through the magic of theatre and the arts. We extend our heartfelt gratitude to everyone who has contributed to our success and invite the community to join us in the upcoming year's exciting endeavours.

With Gratitude,

NOWELL WALLACE

SCHOOLS & YOUTH ORGANISATIONS VISITED

Ascension Sturchley, St Basils Milner Court, Harborne academy, Castle Vale youth project, George dixon academy , Aston Manor Academy, Waverley studio college, All saints Youth Project, Hillcrest school , Birmingham north academy, Greenwood academy, The pump, Heartlands academy, Maryvale Community Centre, Ark St Albans Academy, Aldersley high school , Bishop challoner catholic college, Stonehouse gang, Aston manor academy, Cadbury college, St Basil Kiddimister, Birmingham LGBT Centre , Nechells Day Care, Coton hills community school, Pedmore high school, Moreton school, BOA Academy...

Thank you to our funders Sudden Productions is grateful to our partners, artists and volunteers who make our projects happen! Sudden Productions is also very grateful for the continued support of donors including:

THE ARCHER TRUST

IMI

THE CASEY TRUST

THE UCB FUND

ANONYMOUS DONORS

THE PATRICK TRUST

THE G J W TURNER TRUST

THE EVESON TRUST

ACE - LOTTERY

THE ROWLANDS TRUST

THE DORIS PACEY CHARITY

THE L G HARRIS TRUST

THE TURNER TRUST

THE EVA RECKITT TRUST

THE WOODWARD TRUST

THE GEORGE HENRY

COLLINS TRUST

THE RICHARD KILCUPPE

CHARITY

THE GRANTHAM YORKE

TRUST

THE SECCOMBE TRUST

THE SPARKHILL TRUST

THE OWEN FAMILY TRUST

THE LORD AUSTIN TRUST

THE GRIMLEY TRUST

THE NORTON FOUNDATION

THE MAGDALEN HOSPITAL TRUST

BIRMINGHAM CITY COUNCIL

HEART OF ENGLAND C, ICF

THE PCC FOR WEST MIDLANDS

THE MICHAEL MARSH TRUST

S & D LLOYD CHARITY

THE BARON DAVENPORT CHARITY

THE COLE CHARITABLE TRUST

THE CB&HH TAYLOR 1984 TRUST

The H D H WILLS 1965 CHARITABLE

TRUST

THE RICHARD KILCUPPE CHARITABLE

TRUST

THE R G HILLS CHARITABLE TRUST

THE P B DUMBELL CHARITABLE TRUST

THE GRIMMITT TRUST

THE LEIGH TRUST

LOCALGIVING LTD - MAGIC LITTLE GRANT

THE ERIC VINCENT TRUST FUND

BORIS KARLOFF

LILLIE C JOHNSON CHARITABLE TRUST

THE HAYS TRAVEL FOUNDATION

THE ALFRED LEADBEATER CHARITABLE

THE N SMITH CHARITABLE SETTLEMENT

THE HOPKINS/SAYER CHARITABLE TRUST

MILLS AND REEVE CHARITABLE TRUST

THE GARFIELD WESTON FOUNDATION

THE HEART OF ENGLAND FOUNDATION

THE 29TH MAY 1961 CHARITABLE TRUST

THE EDWARD AND DOROTHY CADBURY

CHARITABLE TRUST

THE ANGELA GALLAGHER MEMORIAL FUND

THE CO-OP LOCAL COMMUNITY FUND



INDEPENDENT EXAMINERS REPORT

TO THE TRUSTEES OF SUDDEN PRODUCTIONS

I report to the trustees on my examination of the financial statements of Sudden Productions for the year ending 30 April 2024.

Respective Responsibilities of Trustees and Examiner

The charity's trustees are responsible for the preparation of the accounts. The charity's trustees consider that an audit is not required for this year under section 144 of the Charities Act 2011 (the Charities Act) and that an independent examination is needed.

It is my responsibility to:

- examine the accounts under section 145 of the Charities Act,
- to follow the procedures laid down in the general Directions given by the Charity Commission (under section 145(5)(b) of the Charities Act), and
- to state whether particular matters have come to my attention.

Basis of Independent Examiner's Statement

My examination was carried out in accordance with general Directions given by the Charity Commission. An examination includes a review of the accounting records kept by the charity and a comparison of the accounts presented with those records. It also includes consideration of any unusual items or disclosures in the accounts, and seeking explanations from the trustees concerning any such matters. The procedures undertaken do not provide all the evidence that would be required in an audit, and consequently no opinion is given as to whether the accounts present a "true and fair" view and the report is limited to those matters in the statement below.

Independent Examiner's Statement

In connection with my examination, no matter has come to my attention:

- which gives me reasonable cause to believe that in any material respect, the requirements to keep accounting records in accordance with section 130 of the Charities Act, and to prepare accounts which accord with the accounting records and comply with the accounting requirements of the Charities Act, have not been met; or
- to which, in my opinion, attention should be drawn in order to enable a proper understanding of the accounts to be reached.



Andy Hopkins
Birmingham Voluntary Service Council
Latham House
33-34 Paradise Street
Birmingham
B1 2AJ

14 January 2025

SUDDEN PRODUCTIONS CHARITY NUMBER 1018887
 STATEMENT OF FINANCIAL ACTIVITIES
 YEAR ENDED 30 APRIL 2024

	Note	Unrestricted funds		Total	Total
		2024	Restricted 2024	2024	2023
		£	£	£	£
<u>Income from:</u>					
Donations and grants	3	27,800	102,031	129,831	113,865
Other income		-	822	822	-
Total income		<u>27,800</u>	<u>102,853</u>	<u>130,653</u>	<u>113,865</u>
<u>Expenditure on:</u>					
Charitable activities	4	24,629	125,208	149,837	90,658
Total charitable expenditure		<u>24,629</u>	<u>125,208</u>	<u>149,837</u>	<u>90,658</u>
Net (loss)/income for the year/Net movement in funds		3,171	- 22,355	- 19,184	23,207
Transfer		- 9,608	9,608	-	-
Fund balances at 1 May 2023		9,393	12,745	22,138	- 1,069
Fund balances at 30 April 2024		<u>2,956</u>	<u>-</u>	<u>2,954</u>	<u>22,138</u>

SUDDEN PRODUCTIONS CHARITY NUMBER 1018887
 BALANCE SHEET
 YEAR ENDED 30 APRIL 2024

	Note	2024 £	2023 £
Current assets			
Cash at bank and in hand		<u>3,496</u>	<u>23,218</u>
		<u>3,496</u>	<u>23,218</u>
Creditors: amounts falling due with one year	8	540	1,080
Net current assets		<u>2,956</u>	<u>22,138</u>
Total assets less current liabilities		<u>2,956</u>	<u>22,138</u>
Income funds			
Restricted funds	9	-	12,745
Unrestricted funds		2,956	9,393
		<u>2,956</u>	<u>22,138</u>

The financial statements were approved by the Board of Trustees on 14 January 2025 and were signed on its behalf by:

Signature:



Neil Hallett

NOTES TO THE FINANCIAL STATEMENTS YEAR ENDED 30 APRIL 2024

1. Accounting Policies

Accounting convention

The accounts have been prepared in accordance with the "Accounting and Reporting by Charities: Statement of Recommended Practice (SORP) and Financial Reporting Standards applicable in the UK and Republic of Ireland (FRS 102)" (as amended for accounting periods commencing from 1 January 2016). The charity is a "Public Benefit Entity as defined by FRS 102.

The charity has taken advantage of the provisions in the SORP for charities applying FRS 102 Update Bulletin 1 not to prepare a Statement of Cash Flows.

The financial statements are prepared in sterling, which is the functional currency of the charity.

The financial statements have been prepared under the historical cost convention. The principal accounting policies adopted are set out below.

Going concern

At the time of approving the financial statements, the trustees have a reasonable expectation that the charity has adequate resources to continue in operational existence for the foreseeable future. Thus the trustees continue to adopt the going concern basis in preparing the financial statements.

Charitable funds

Unrestricted funds are available for use at the discretion of the trustees in furtherance of their charitable objectives unless the funds have been designated for other purposes.

Restricted funds are subject to specific conditions by donors as to how they may be used. The purposes and uses of the restricted funds are set out in the notes to the financial statements.

Incoming resources

These are included in the Statement of Financial Activities (SOFA) when:

- The charity becomes legally entitled to the resources after any performance conditions have been met;
- The trustees are virtually certain that they will receive the resources; and
- The monetary value can be measured with sufficient reliability.

Cash donations are recognised on receipt. Other donations are recognised once the charity has been notified of the donation, unless performance conditions require deferral of the amount.

NOTES TO THE FINANCIAL STATEMENTS YEAR ENDED 30 APRIL 2024

1. Accounting Policies (continued)

Resources expended

Charitable activities includes all costs relating to general administration, which support the charitable purpose.

Grants offered subject to conditions, which have not been met at the year-end date are noted as a commitment, but not accrued as expenditure.

Expenditure is accounted for on an accruals basis and has been classified under headings that aggregate all costs related to the category. Where costs cannot be directly attributed to particular headings that have been allocated to activities on a basis consistent with the use of the resources.

Incoming resources with related expenditure

When incoming resources have related expenditure (as with fundraising or contract income) both are reported gross in the SOFA.

Financial instruments

The charity has elected to apply the provisions of Section 11 "Basic Financial Instruments" and Section 12 "Other Financial Issues" of FRS 102 to all of its financial instruments.

Financial instruments are recognised in the charity's balance sheet when the charity becomes party to the contractual provisions of the instrument.

Financial assets and liabilities are offset, with the net amounts presented in the financial statements, when there is a legally enforceable right to set off the recognised amounts and there is an intention to settle on a net basis or to realise the assets and settle the liability simultaneously.

Basic financial assets

Basic financial assets, which include debtors and cash and bank balances, are initially measured at transaction price, including transaction costs and are subsequently carried at amortised cost using the effective interest method unless the arrangement constitutes a financing transaction, where the transaction is measured at the present value of the future receipts discounted at a market value of interest. Financial assets classified as receivable within one year are not amortised.

NOTES TO THE FINANCIAL STATEMENTS
YEAR ENDED 31 April 2024
Accounting Policies (continued)

Basic financial liabilities

Basic financial liabilities, including creditors and bank loans are initially recognised at transaction price unless the arrangement constitutes a financing transaction, where the debt instrument is measured at the present value of the future payments discounted at a market rate of interest. Financial liabilities classified as payable within one year are not amortised.

De-recognition of financial liabilities

Financial liabilities are derecognised when the charity's contractual obligations expire or are discharged or cancelled.

Pensions

The charity operates a defined contribution pension scheme and the pension charge represents the amounts payable by the charity to the fund for the year.

2. Critical accounting estimates and judgements

In the application of the charity's accounting policies, the trustees are required to make judgements, estimates and assumptions about the carrying amount of assets and liabilities that are not readily apparent from other sources. The estimates and associated assumptions are based on historical experience and other factors that are considered to be relevant. Actual results may differ from these estimates.

The estimates and underlying assumptions are reviewed on an ongoing basis. Revisions to accounting estimates are recognised in the period in which the estimate is revised where the revision affects only that period, or in the period of the revision and future periods where the revision affects both current and future periods.

NOTES TO THE FINANCIAL STATEMENTS
YEAR ENDED 30 APRIL 2024

3. Donations and grants

	Restricted funds	Unrestricted funds	Total	Total
	2024	2024	2024	2023
	£	£	£	£
Grants £1,000 and over:				
Arts Council England – Lottery			-	6,537
Awards for All			-	8,175
The 29 th May 1961 Charitable Trust		2,000	2,000	2,000
The Alfred Leadbeater Trust	2,500		2,500	-
The Angela Gallagher Memorial Fund	1,000		1,000	-
The Anton Jurgens Foundations			-	2,000
The Anthony Bourne Foundation			-	3,000
The Archer Trust	2,000		2,000	-
The Austin & Hope Pilkington Trust			-	1,000
The Baron Davenports's Charity	1,000		1,000	1,000
BCC Windrush 75		2,000	2,000	-
Birmingham City Council	24,140		24,140	12,000
The Birmingham Common Good Trust			-	1,000
CB & HH Taylor 1984	1,000		1,000	
The Casey Trust	2,000		2,000	3,000
The Cole Charitable Trust		1,200	1,200	1,200
Co-Op Local COmmunity Fund	1,454		1,454	
Doris Pacey Charity	3,000		3,000	
The Edward and Dorothy Cadbury Charitable Trust	2,000		2,000	2,000
The Eva Reckitt Trust Fund		1,000	1,000	1,000
The Eveson Charitable Trust	2,500		2,500	2,500
The Garfield Weston Foundation	5,000		5,000	3,000
The George Henry Collins Charity	1,000		1,000	1,000
The GJW Turner Trust		1,000	1,000	-
The Grantham Yorke Trust	2,500		2,500	2,500
The Green, Hall Foundation			-	2,000
The Grimmitt Trust	2,500		2,500	2,500
Hays Travel Foundations	2,000		2,000	-
The Heart Of England Community Foundation	3,000		3,000	2,000
Heart Of England ICF	14,250		14,250	-
The Hobson Charity			-	1,000
The L G Harris Trust	2,000		2,000	2,000
The Leigh Trust	2,500		2,500	-
The Lord Austin Trust	2,000		2,000	-
Living Well UK			-	5,000
The Lord Austin Trust			-	2,000
The Magdalen Hospital Trust	2,000		2,000	-
Mills and Reeve Charitable Trust		1,044	1,044	-

The Michael Marsh Charitable Trust		1,000	1,000	-
The Norton Foundation	2,500		2,500	2,500
Owen Family Trust	1,000		1,000	-
The Patrick Trust		2,000	2,000	2,000
PCC for West Midlands	2,636		2,636	-
R G Hills Charitable Trust		3,000	3,000	-
The Richard Kilcuppes Charity	1,000	1,000	2,000	-
The Roger and Douglas Turner Charitable Trust			-	3,000
The Rowlands Trust		1,556	1,556	-
The Rowley Trust			-	1,000
The Sackler Trust		5,000	5,000	-
The Saint James Place Foundation			-	5,000
The Sheldon Trust			-	5,000
The Sir John Middlemore Charitable Trust			-	2,000
Sparkhill Trust	1,000		1,000	-
The Sylvia Waddilove Foundation UK			-	1,000
The Trees of the Leigh Trust			-	1,000
Turner Trust		3,000	3,000	-
UCB Fund	8,375		8,375	-
The W F Southall Trust			-	3,000
Western Power Distribution's Community Matters Foundation			-	8,000
Woodroffe Benton Foundation			-	1,000
The Woodward Trust		1,000	1,000	-
Small grants under £1,000	4,176	2,000	6,176	9,953
Total for the year	102,031	27,800	129,831	113,865
Total for 2023	97,015	16,850	113,865	

**NOTES TO THE FINANCIAL STATEMENTS
YEAR ENDED 30 APRIL 2024**

4. Expenditure on charitable activities

	2024	2023
	£	£
Salary – Project Manager (note 6)	37,558	38,632
Artists - Creative Team	96,340	42,729
Production costs and room hire	4,495	3,948
Insurance, post, phone and stationery	2,707	537
Website	1,789	1,696
Transport and travel costs	6,244	2,076
Training and memberships	703	380
Governance costs	540	660
Reversal of historic accruals	- 540	
Total	<u>149,837</u>	<u>90,658</u>

Analysis by fund

	2024	2023
	£	£
Unrestricted funds	34,236	6,388
Restricted funds	115,599	84,270
Total	<u>149,835</u>	<u>90,658</u>

5. Trustees

None of the trustees (or any persons connected with them) received any remuneration or benefits from the charity during the year (2023 - £nil).

NOTES TO THE FINANCIAL STATEMENTS
YEAR ENDED 30 APRIL 2024

6. Staff costs

2024		2023
£		£
Wages and salaries	32,470	24,253
Social security costs	2,762	8,592
Other pension costs	2,326	2,067
Expense allowances	3,653	3,720
Total	<u>41,211</u>	<u>38,632</u>

The average number of administration employees during the year was 1 (2023 – 1), who did not earn more than £60,000 in either year.

7. Financial Instruments

	2024	2023
	£	£
Carrying amount of financial assets		
Debt instruments measured at amortised cost	<u>-</u>	<u>-</u>
Carrying value of financial liabilities		
Measured on amortised costs	<u>-</u>	<u>-</u>

8. Creditors: amounts falling due within one year

	2024	2023
	£	£
Accruals and deferred income	540	1,080
	<u>540</u>	<u>1,080</u>

**NOTES TO THE FINANCIAL STATEMENTS
YEAR ENDED 30 APRIL 2024**

9. Restricted Funds

Current Year

	Movement in funds				
	Balance at 1 May 2023	Transfer	Incoming resources	Resources expended	Balance at 30 April 2024
	£	£	£	£	£
Urban Theatre Hawkesley	504	377	3,136	4,017	-
Maryvale Pop Up Theatre	3,065	1,994	14,976	20,035	-
My Grandparents, My Parents and I	- 136	4,201	2,822	6,887	-
What Matters	492	41	19,650	20,183	-
Rewind and Fast Forward	3,000	1,903	39,440	44,343	-
Love Trap	1,886	634	7,000	9,520	-
Isolated	3,935	459	15,829	20,223	- 0
Total	12,746	9,608	102,853	125,208	- 0

Prior Year

	Movement in funds				
	Balance at 1 May 2022	Transfer	Incoming resources	Resources expended	Balance at 30 April 2023
	£	£	£	£	£
Urban Theatre Hawkesley	-	-	9,000	8,496	504
Maryvale Pop Up Theatre	-	-	12,537	9,472	3,065
My Grandparents, My Parents and I	-	-	8,175	8,311	- 136
What Matters	-	-	16,378	15,886	492
Rewind and Fast Forward	-	-	3,000	-	3,000
Love Trap	-	-	16,000	14,114	1,886
Isolated	-	-	31,925	27,990	3,935
Total	-	-	97,015	84,269	12,746

**NOTES TO THE FINANCIAL STATEMENTS YEAR
ENDED 30 APRIL 2024**

10. Analysis of net assets between funds

Fund balances at 30 April 2024 and 30 April 2023 are represented by current assets/(liabilities).

11. Related party transactions

There were no related party transactions during the year (2023 – Nil).

Treasurer's report

Financial review: Thanks to an ambitious strategy and programme in 2024, we reached new funders such as the UCB Fund or the Inclusive Communities Fund. Those new funders, added to continuous support from our regular supporters, resulted in a significant rise in income from 2023 (income of £113,865) to 2024 (income of £130,653). We reached more schools and youth organisations, we were able to offer several sessions per projects which would use various creative contents (such as a theatre performance, the screening of a short film, a podcast recording, or participatory workshop...). We managed to increase our offer thanks to the fantastic work and dedication of our project director and the artists involved. The project director in charge of coordinating all aspects of all projects and running the company was paid £37,558 for the year. Further £96,340 were used to pay fees of creative teams, facilitators, and actors.

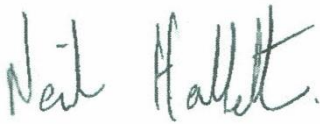
It will be paramount for Sudden Productions to raise similar finances in 2025 in order to continue to bring our productions to those who have limited access to conventional theatre and to develop more original work on challenges face by young people today. Interest in and demand for the organisation's live work continues to grow, and so funding should be raised in order to support this interest.

Reserves Policy: Income and expenditure of the charity fluctuates according to the pattern of grants. Artists are hired per project and financial commitments are limited. Unrestricted funds are used to plan for one month core and running costs.

Statement of Trustees' responsibilities: The Trustees are responsible for preparing the annual report and financial statements for each financial year, in accordance with the Charities Act 2011, the Charities (Accounts and Reports) Regulations 2008 and the United Kingdom Generally Accepted Accounting Practice, which give a true and fair view of the incoming resources and application of the resources of the group during the year and the charity's state of affairs at the end of the financial year. In preparing those financial statements, the Trustees are required to: select suitable accounting policies and then apply them consistently; make judgements and estimates that are reasonable and prudent; state whether applicable accounting standards and statements of recommended practice had been followed, subject to any material departures disclosed and explained in the financial statements; prepare the accounts on the going concern basis unless it is inappropriate to presume that the charity will continue in operation. These guidelines run alongside the Company's constitution.

Signed

Dated: 14.12.25



Trustees' name: Neil Hallett

SUDDEN PRODUCTIONS

England & Wales - Charity number 1018887

Accounts



Report of the trustees

Sudden Productions

Year ended April 2023

Love Trap

*Online Grooming Awareness Film
Over 13 000 views already!*

SUDDEN
PRODUCTIONS

Sudden Productions

www.suddenproductions.co.uk

Registered Charity No 1018887

Sudden Productions has been in existence since 1993 and has been committed to bringing its productions to those who have limited access to conventional theatre and film-making in Birmingham and the West Midlands. The charity's community programmes deliver social, emotional, physical and educational benefits to young participants. Our core sectors are:

Inclusion: Working with marginalized groups with a keen focus on integration and supporting social cohesion;

Education: Developing confidence and communication, and improving behaviour and attitudes to learning;

Health: Effecting positive improvements in mental and physical health;

Professional Development: Helping to develop the careers of young talents.

We have a track record of educational plays, films, exhibitions, and workshops. Sudden Productions work exclusively with children and young people and produce projects with a focus on the difficult issues and challenges that young people face today. Over the past years we have covered important issues such as racism, homelessness, juvenile delinquency, bullying, unemployment, etc.

Most workshops and performances we offer schools, voluntary groups, youth centres are entirely free. In some places we do charge a very minimum fee (if distant and/or if there is a lot time involved). Our free work gives many disadvantaged young people the chance to benefit from our projects. We work with young people coming off drugs and others attending rehab units, probation centres, pupil referral units social services, and young people off the streets (Homeless) each year and create partnerships with voluntary organizations, youth offending teams, local authorities, statutory bodies, etc on each project we deliver.

Legal and administrative information

Status

Sudden Productions is a registered charity governed by its memorandum and articles of association. The charity is governed by a constitution adopted at the first AGM in 1996 revised in 2005. A new Constitution was adopted by the Trustees on the 10th of August 2008. (charity number 1018887).

Trustees

Neil Hallett
Christine Brueton
Stephen Bradbury

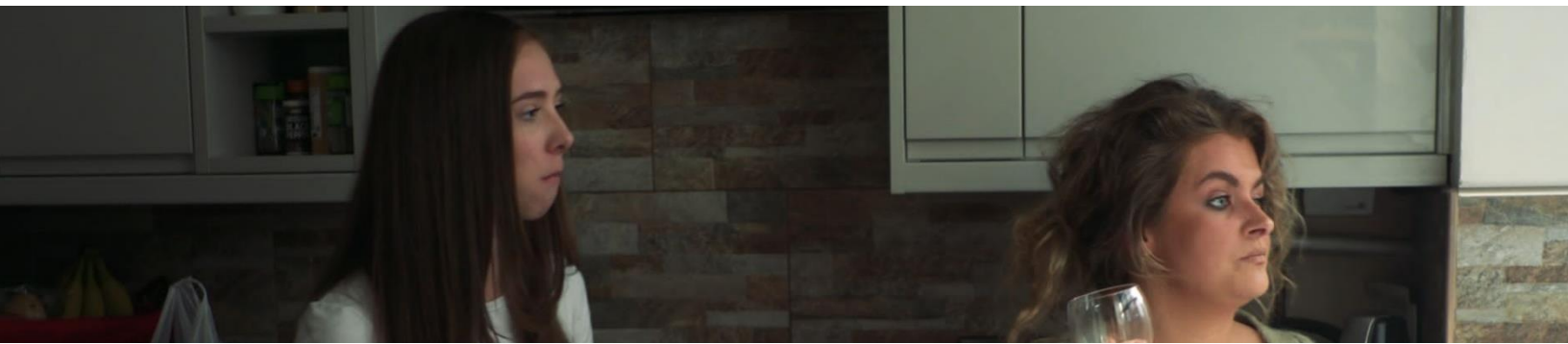
Registered Office

The Warehouse
54-57 Allison Street
Birmingham
B5 5TH

Objectives and activities:

A. Promote, improve develop and maintain public education in, and appreciation of, the art and science of drama in all its aspects by the presentation in public of plays and by such other ways as the society through its committee shall from time to time determine.

B. Educate young people in order to develop their physical, mental and spiritual capacities so that they may grow to full maturity as individuals and as members of society.



Highlights and acknowledgment from the Director

I am pleased to present Sudden Productions Annual Report 2023. While COVID-19 disruptions impacted Sudden Productions operations last year, we were able to return to a full range of activities including touring performances and delivery of extensive education and youth drama activities in 2023.

In 2023, our goal was to create collective theatre & arts experiences that change lives and tackle issues faced by young people today. At Sudden Productions our values are: Integrity; Inclusivity; Generosity; Energy; Ambition & Audacity; and our aims reflect our values as we aspire and work towards creating theatre experiences of the highest quality; reaching as many young people as possible, investing in talent and create pathways; managing a sustainable theatre company and being a great company to work with.

Witnessing the return of joyful young audiences to our performances during the year, we were reminded of the importance of storytelling as a way of rebuilding communities.

While COVID-19 continues to have significant and challenging impacts, we are proud to have presented a full programme of 6 projects. We received rave reviews for our work on *ISOLATED* (Loneliness & Youth Mental Health), *WHAT MATTERS* (Anti-Racism • Human Rights and Gender Equality • Equality, Diversity and Inclusion), *FEARFUL* (Knife Crime Awareness) or *LOVE TRAP* (Online Grooming Awareness). Our work on *LOVE TRAP* this year included the production of high-standard short film which has now reached over 12,000 views on youtube and is screened prior to drama workshops creating an awareness of Online Grooming.

A significant change in our offer was the possibility for two community centres to welcome our artists for up to 12 weeks to devise their own stage production. *MARYVALE POP UP THEATRE & HAWKESLEY URBAN THEATRE PROJECT* inspired a group of approx. 25

young people and adults with learning disabilities to create original, innovative & spontaneous theatre in Kingstanding and in Kings Norton. Participants were involved in all aspects of the production from designing costumes, props and set through to acting on stage.... Participants all shined in what they did and felt a valued and respected member of the community. Their productions were full of life, colour and delight.

Another very special project this year was *MY GRANDPARENTS, MY PARENTS AND I* which is a stage production and a podcast series commemorating the 75th anniversary of the MV Empire Windrush's arrival into the UK. The project was developed in Spring 2023 and toured from June 2023.

With support from our funders, we also expanded our offer of digital content in 2023 with podcasts, short films and live streams of performances.

We thank everyone who supported us this year – from our Chair, and the tirelessly passionate staff and volunteers, to our generous and invested partners and supporters. A special thanks must go to all artists involved whose dedication and skill is second to none.

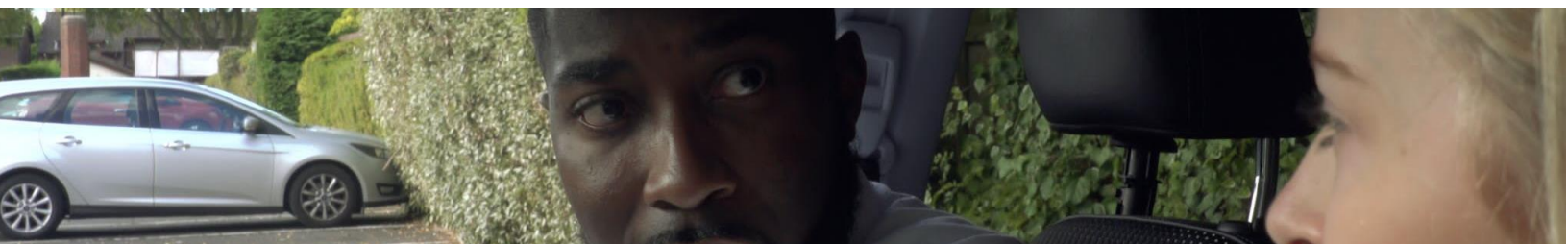
In 2024, our Artistic Vision will remain in line with 2023 and we will be: to nurture diverse, new stories, today 'stories and new talent; to reach new & diverse audiences locally and regionally, especially those who have little access to conventional theatre; to deliver the highest quality and most accessible education and youth programs; to building sustainable relationships with partners across Birmingham and the West Midlands and be part of those who drive social change.

With Gratitude,



Nowell Wallace

Director, Sudden Productions



2023 Projects: A few photos



Projects' delivery

For each project, we aim to devise a short play, a drama workshop, a teaching resource, a podcast series and a short film. We usually work for three years on each project & fundraise and report to funders and partners every year. We can offer three to four sessions to each school and youth organisation (according to needs) for each project as it is more beneficial for young participants to be visited several times.

In 2022/2023, we worked with the following schools and youth organisations: Hawkesley community centre, Maryvale community centre, Lighthouse youth centre, Small heath youth centre, Holyhead school, North Birmingham Academy, Hamstead hall academy, Ark St Albans, Heartlands academy, Hillcrest school, Pedmore high school, Waverley college, Greenwood academy, The Pump, Stonehouse gang youth centre , Coton Hills community school, All saints youth centre, Moreton school, Ascension Stirchley, BOA academy, Aldersley high school, e-act North academy , Aston Manor Academy, Broadway Academy, Bordesley Green Girls, The Phoenix Collegiate , Sandwell Academy, George Salter Academy, Cadbury College, Moreton School. Public performances took place at Midlands Arts Centre

In 2023, we delivered Seven sessions for Love Trap; Twelve sessions for What Matters, Six sessions for Fearful, and Thirty-Four Sessions for Isolated. Maryvale Pop Up Theatre & Urban Theatre Hawkesley took place between April and July with weekly sessions. My Grandparents, My Parents and I was developed in Spring 2023 but toured from June 2023. Visit our website for photos and watch our films and listen to podcasts too!

SPECIAL THANKS to our partners, artists and volunteers who make our projects happen! A big thank you to our donors!

THE AUSTIN & HOPE PILKINGTON TRUST	THE BLAKEMORE FOUNDATION	GARFIELD WESTON FOUNDATION
THE LEEDS BUILDING SOCIETY FOUNDATION	THE GRANTHAM YORKE TRUST	TREES OF THE LEIGH TRUST
THE NORTON FOUNDATION	THE JOHNSON LC TRUST	BIRMINGHAM CITY COUNCIL
THE WOODROFFE BENTON FOUNDATION	THE PATRICK TRUST	PB DUMBELL TRUST
THE BOND-WILLIAMS CHARITABLE TRUST	THE WILMCOTE CHARITRUST	LIVING WELL UK
THE 29TH MAY 1961 CHARITABLE TRUST	ARTS COUNCIL OF ENGLAND	AWARDS FOR ALL
THE BIRMINGHAM COMMON GOOD TRUST	THE COLE CHARITABLE TRUST	WESTERN POWER DISTRIBUTION
THE RICHARD CADBURY CHARITABLE TRUST	THE HUDSON CHARITABLE TRUST	W F SOUTHALL TRUST
THE EDWARD AND DOROTHY CADBURY TRUST	THE SHELDON TRUST	THE GRIMMITT TRUST
THE BARON DAVENPORT'S CHARITY	THE SQUIRE PATTON BOGG	THE EVESON CHARITABLE TRUST
THE HOPKINS AND SAYER CHARITIES	THE ROWLANDS TRUST	THE W.E.D CHARITBABLE TRUST
THE SIR JOHN MIDDLEMORE	THE EVA RECKITT TRUST	BHSF MEDICAL CHARITY
THE BORIS KARLOFF CHARITY	THE HOBSON CHARITY	THE L G HARRIS TRUST
THE SAINT JAMES PLACE FOUNDATION	DAVID EAST FUND	SYLVIA WADDILOVE FOUNDATION
LOCALGIVING LTD - MAGIC LITTLE GRANTS	THE SPARKHILL TRUST	THE ROWLEY TRUST
THE ROGER & DOUGLAS TURNER TRUST	THE GEORGE HENRY CHARITY	THE UNCLE BILL TRUST
THE ANTHONY BOURNE FOUNDATION	THE SECCOMBE TRUST	THE WILLIAM DUDLEY TRUST
THE SHAKESPEARE MARTINEAU FOUNDATION	THE LORD AUSTIN TRUST	THE GREEN HALL FOUNDATION
THE LORD MAYOR OF BIRMINGHAM'S CHARITY	THE CASEY TRUST	THE ANTON JURGENS FONDATION
THE ERIC W VINCENT TRUST FUND		

INDEPENDENT EXAMINERS REPORT

TO THE TRUSTEES OF SUDDEN PRODUCTIONS

I report to the trustees on my examination of the financial statements of Sudden Productions for the year ending 30 April 2023.

Respective Responsibilities of Trustees and Examiner

The charity's trustees are responsible for the preparation of the accounts. The charity's trustees consider that an audit is not required for this year under section 144 of the Charities Act 2011 (the Charities Act) and that an independent examination is needed.

It is my responsibility to:

- examine the accounts under section 145 of the Charities Act,
- to follow the procedures laid down in the general Directions given by the Charity Commission (under section 145(5)(b) of the Charities Act), and
- to state whether particular matters have come to my attention.

Basis of Independent Examiner's Statement

My examination was carried out in accordance with general Directions given by the Charity Commission. An examination includes a review of the accounting records kept by the charity and a comparison of the accounts presented with those records. It also includes consideration of any unusual items or disclosures in the accounts, and seeking explanations from the trustees concerning any such matters. The procedures undertaken do not provide all the evidence that would be required in an audit, and consequently no opinion is given as to whether the accounts present a "true and fair" view and the report is limited to those matters in the statement below.

Independent Examiner's Statement

In connection with my examination, no matter has come to my attention:

- which gives me reasonable cause to believe that in any material respect, the requirements to keep accounting records in accordance with section 130 of the Charities Act, and to prepare accounts which accord with the accounting records and comply with the accounting requirements of the Charities Act, have not been met; or
- to which, in my opinion, attention should be drawn in order to enable a proper understanding of the accounts to be reached.

A photograph of a handwritten signature in blue ink that reads "Andy Hopkins". The signature is written in a cursive, slightly slanted style.

Andy Hopkins
Birmingham Voluntary Service Council
First Floor, Livery Place
35 Livery Street
Birmingham
B3 2PB

30 November 2023

**STATEMENT OF FINANCIAL ACTIVITIES YEAR
ENDED 30 APRIL 2023**

	Note	Unrestricted funds	Restricted funds	Total	Total
		2023	2023	2023	2022
		£	£	£	£
<u>Income from:</u>					
Donations and grants	3	16,850	97,015	113,865	49,132
Other income		-	-	-	-
Total income		16,850	97,015	113,865	49,132
<u>Expenditure on:</u>					
Charitable activities	4	6,388	84,270	90,658	51,698
Total charitable expenditure		6,388	84,270	90,658	51,698
Net (loss)/income for the year/Net movement in funds		10,462	12,745	23,207	-2,566
Transfer		-	-	-	-
Fund balances at 1 May 2022		-1,069	0	-1,069	1,497
Fund balances at 30 April 2023		9,393	12,745	22,138	-1,069

Balance Sheet
As at 30th April 2023

	Note	2023 £	2022 £
Current assets			
Cash at bank and in hand		23,218	11
		<u>23,218</u>	<u>11</u>
Creditors: amounts falling due with one year	8	-1,080	-1,080
		<u>22,138</u>	<u>-1,069</u>
Net current assets		<u>22,138</u>	<u>-1,069</u>
Total assets less current liabilities		<u><u>22,138</u></u>	<u><u>-1,069</u></u>
Income funds			
Restricted funds	9	12,745	1,991
Unrestricted funds		9,393	-494
		<u>22,138</u>	<u>1,497</u>

The financial statements were approved by the Board of Trustees on November 30th and were signed on its behalf by:



Neil Hallett

NOTES TO THE FINANCIAL STATEMENTS YEAR ENDED 30 APRIL 2023

1. Accounting Policies

Accounting convention

The accounts have been prepared in accordance with the "Accounting and Reporting by Charities: Statement of Recommended Practice (SORP) and Financial Reporting Standards applicable in the UK and Republic of Ireland (FRS 102)" (as amended for accounting periods commencing from 1 January 2016). The charity is a "Public Benefit Entity as defined by FRS 102.

The charity has taken advantage of the provisions in the SORP for charities applying FRS 102 Update Bulletin 1 not to prepare a Statement of Cash Flows.

The financial statements are prepared in sterling, which is the functional currency of the charity.

The financial statements have been prepared under the historical cost convention. The principal accounting policies adopted are set out below.

Going concern

At the time of approving the financial statements, the trustees have a reasonable expectation that the charity has adequate resources to continue in operational existence for the foreseeable future. Thus the trustees continue to adopt the going concern basis in preparing the financial statements.

Charitable funds

Unrestricted funds are available for use at the discretion of the trustees in furtherance of their charitable objectives unless the funds have been designated for other purposes.

Restricted funds are subject to specific conditions by donors as to how they may be used. The purposes and uses of the restricted funds are set out in the notes to the financial statements.

Incoming resources

These are included in the Statement of Financial Activities (SOFA) when:

- The charity becomes legally entitled to the resources after any performance conditions have been met;
- The trustees are virtually certain that they will receive the resources; and
- The monetary value can be measured with sufficient reliability.

Cash donations are recognised on receipt. Other donations are recognised once the charity has been notified of the donation, unless performance conditions require deferral of the amount.

**NOTES TO THE FINANCIAL STATEMENTS
YEAR ENDED 30 APRIL 2023**

1. Accounting Policies(continued)

Resources expended

Charitable activities includes all costs relating to general administration, which support the charitable purpose.

Grants offered subject to conditions, which have not been met at the year-end date are noted as a commitment, but not accrued as expenditure.

Expenditure is accounted for on an accruals basis and has been classified under headings that aggregate all costs related to the category. Where costs cannot be directly attributed to particular headings that have been allocated to activities on a basis consistent with the use of the resources.

Incoming resources with related expenditure

When incoming resources have related expenditure (as with fundraising or contract income) both are reported gross in the SOFA.

Financial instruments

The charity has elected to apply the provisions of Section 11 “Basic Financial Instruments” and Section 12 “Other Financial Issues” of FRS 102 to all of its financial instruments.

Financial instruments are recognised in the charity’s balance sheet when the charity becomes party to the contractual provisions of the instrument.

Financial assets and liabilities are offset, with the net amounts presented in the financial statements, when there is a legally enforceable right to set off the recognised amounts and there is an intention to settle on a net basis or to realise the assets and settle the liability simultaneously.

Basic financial assets

Basic financial assets, which include debtors and cash and bank balances, are initially measured at transaction price, including transaction costs and are subsequently carries at amortised cost using the effective interest method unless the arrangement constitutes a financing transaction, where the transaction is measured at the present value of the future receipts discounted at a market value of interest. Financial assets classified as receivable within one year are not amortised.

NOTES TO THE FINANCIAL STATEMENTS
YEAR ENDED 31 April 2023
Accounting Policies (continued)

Basic financial liabilities

Basic financial liabilities, including creditors and bank loans are initially recognised at transaction price unless the arrangement constitutes a financing transaction, where the debt instrument is measured at the present value of the future payments discounted at a market rate of interest. Financial liabilities classified as payable within one year are not amortised.

De-recognition of financial liabilities

Financial liabilities are derecognised when the charity's contractual obligations expire or are discharged or cancelled.

Pensions

The charity operates a defined contribution pension scheme and the pension charge represents the amounts payable by the charity to the fund for the year.

2. Critical accounting estimates and judgements

In the application of the charity's accounting policies, the trustees are required to make judgements, estimates and assumptions about the carrying amount of assets and liabilities that are not readily apparent from other sources. The estimates and associated assumptions are based on historical experience and other factors that are considered to be relevant. Actual results may differ from these estimates.

The estimates and underlying assumptions are reviewed on an ongoing basis. Revisions to accounting estimates are recognised in the period in which the estimate is revised where the revision affects only that period, or in the period of the revision and future periods where the revision affects both current and future periods.

**NOTES TO THE FINANCIAL STATEMENTS YEAR
ENDED 30 APRIL 2023**

3. Donations and grants

	Restricted funds	Unrestricted funds	Total	Total
	2023	2023	2023	2022
	£	£	£	£
Grants £1,000 and over:				
Arts Council England – Lottery	6,537	-	6,537	-
Awards for All	8,175	-	8,175	-
Birmingham City Council	12,000	-	12,000	-
The 29 th May 1961 Charitable Trust	-	2,000	2,000	-
The Alfred Leadbeater Trust	-	-	-	2,500
The Angela Gallagher Memorial Fund	-	-	-	1,000
	2,000	-	2,000	-
The Anton Jurgens Foundations				
The Anthony Bourne Foundation	3,000	-	3,000	2,000
The Archer Trust	-	-	-	1,500
The Austin & Hope Pilkington Trust	1,000	-	1,000	-
The Baron Davenports's Charity	1,000	-	1,000	1,000
	1,000	-	1,000	-
The Birmingham Common Good Trust				
The Casey Trust	3,000	-	3,000	-
The Cole Charitable Trust	-	1,200	1,200	1,000
The Edgar E Lawley Foundation	-	-	-	1,500
The Edward and Dorothy Cadbury Charitable Trust	2,000	-	2,000	2,500
The Edward Cadbury Charitable Trust	-	-	-	3,000
The Eva Reckitt Trust Fund	1,000	-	1,000	1,000
The Eveson Charitable Trust	2,500	-	2,500	2,000
The Garfield Weston Foundation	3,000	-	3,000	-
The George Henry Collins Charity	1,000	-	1,000	1,000
The GJW Turner Trust	-	-	-	-
The Grantham Yorke Trust	2,500	-	2,500	2,500
The Green, Hall Foundation	2,000	-	2,000	-

The Grimmitt Trust	2,500	-	2,500	2,000
The Haremead Trust	-	-	-	-
The Heart Of England Community Foundation	2,000	-	2,000	-
The Hobson Charity	1,000	-	1,000	-
The L G Harris Trust	-	2,000	2,000	-
The Leigh Trust	-	-	-	1,000
Living Well UK	5,000	-	5,000	-
The Lord Austin Trust	2,000	-	2,000	2,000
The Magdalen Hospital Trust	-	-	-	1,000
The Michael Marsh Charitable Trust	-	-	-	-
The Norton Foundation	2,500	-	2,500	2,500
The Patrick Trust	-	2,000	2,000	-
The Ratcliff Foundation	-	-	-	-
The Richard Kilcuppes Charity	-	-	-	1,000
The Roger and Douglas Turner Charitable Trust	-	3,000	3,000	3,000
The Rowlands Trust	-	-	-	-
The Rowley Trust	1,000	-	1,000	-
The Saint James Place Foundation	5,000	-	5,000	-
The Sheldon Trust	5,000	-	5,000	-
The Sir John Middlemore Charitable Trust	2,000	-	2,000	2,000
The Skipton Charitable Foundation	-	-	-	1,182
The Southall Trust	-	-	-	2,500
The Sylvia Waddilove Foundation UK	1,000	-	1,000	1,000
The Trees of the Leigh Trust	1,000	-	1,000	-
The Truemark Trust	-	-	-	1,000
	3,000	-	3,000	-
The W F Southall Trust				
Western Power Distribution's Community Matters Foundation	8,000	-	8,000	-
Woodroffe Benton Foundation	-	1,000	1,000	-
Small grants under £1,000	<u>4,303</u>	<u>5,650</u>	<u>6,450</u>	<u>6,450</u>
Total for the year	<u>158,290</u>	<u>49,440</u>	<u>207,730</u>	<u>49,132</u>
Total for 2022	<u>22,850</u>		<u>26,282</u>	<u>49,132</u>

**NOTES TO THE FINANCIAL STATEMENTS
YEAR ENDED 30 APRIL 2023**

4. Expenditure on charitable activities

	2023	2022
	£	£
Salary – Project Manager (note 6)	38,632	22,712
Project Manager fees	-	-
Artists - Creative Team	42,729	20,211
Production costs and room hire	3,948	1,263
Insurance, post, phone and stationery	537	3,865
Website	1,696	2,748
Transport and travel costs	2,076	359
Training and memberships	380	-
Governance costs	660	540
Total	<u>90,658</u>	<u>51,698</u>

Analysis by fund

	2023	2022
	£	£
Unrestricted funds	6,388	22,795
Restricted funds	84,270	28,903
Total	<u>90,658</u>	<u>51,698</u>

5. Trustees

None of the trustees (or any persons connected with them) received any remuneration or benefits from the charity during the year (2022 - £nil).

**NOTES TO THE FINANCIAL STATEMENTS
YEAR ENDED 30 APRIL 2023**

6. Staff costs

	2023	2022
	£	£
Wages and salaries	24,253	18,838
Social security costs	8,592	2,592
Other pension costs	2,067	1,282
Expense allowances	3,720	
Total	<u>38,632</u>	<u>22,712</u>

The average number of administration employees during the year was 1 (2022 – 1), who did not earn more than £60,000 in either year.

7. Financial instruments

	2023	2022
	£	£
Carrying amount of financial assets		
Debt instruments measured at amortised cost	<u> -</u>	<u> -</u>
Carrying value of financial liabilities		
Measured on amortised costs	<u> -</u>	<u> -</u>

8. Creditors: amounts falling due within one year

	2023	2022
	£	£
Accruals and deferred income	1,080	1,080
	<u>1,080</u>	<u>1,080</u>

**NOTES TO THE FINANCIAL STATEMENTS
YEAR ENDED 30 APRIL 2023**

9. Restricted funds

The income funds of the charity include restricted funds comprising the following unexpended balances of donations and grants held on trust for specific purposes:

Current Year

	Movement in funds				
	Balance at 1 May 2022	Transfer	Incoming resources	Resources expended	Balance at 30 April 2022
	£	£	£	£	£
Love Trap	-	-	16,000	14,114	1,886
Isolated	-	-	31,925	27,990	3,935
Urban Theatre Hawkesley	-	-	9,000	8,496	504
Maryvale Pop Up Theatre	-	-	12,537	9,472	3,065
My Grandparents, My Parents and I	-	-	8,175	8,311	-136
What Matters	-	-	16,378	15,886	492
Rewind and Fast Forward	-	-	3,000	-	3,000
Total	-	-	97,015	84,270	12,745

Prior Year

	Movement in funds				
	Balance at 1 May 2021	Transfer	Incoming resources	Resources expended	Balance at 30 April 2022
	£	£	£	£	£
Fearful	1,991	630	0	2,621	-
Love Trap	-	-	7,500	7,500	-
Isolated	-	-	18,782	18,782	-
Total	1,991	630	26,282	28,903	-

Restricted funds represent grants and donations given to support the production of various performance

NOTES TO THE FINANCIAL STATEMENTS YEAR ENDED 30 APRIL 2023

1. Analysis of net assets between funds

Fund balances at 30 April 2023 and 30 April 2022 are represented by current assets/(liabilities).

2. Related party transaction

There were no related party transactions during the year (2022 – Nil).

Treasurer's report

Financial review: Thanks to an ambitious strategy and programme in 2023, we reached new funders such as Awards for All, Arts Council of England, or Birmingham City Council. Those new funders, added to continuous support from our regular supporters, resulted in a significant rise in income from 2022 (total income of £49,132) to 2023 (income of £113,865). We reached more schools and youth organisations, we were able to offer several sessions per projects which would use various creative contents (such as a theatre performance, the screening of a short film, a podcast recording, or participatory workshop...). We also developed more original projects & two courses this year! We managed to organise this increase in the work load by the work our project director and the artists involved to deliver our main projects. The project director in charge of coordinating all aspects of all projects and running the company was paid £24,253 for the year. Further £42,729 were used to pay fees of creative teams, facilitators, and actors.

It will be paramount for Sudden Productions to raise similar finances in 2024 in order to continue to bring our productions to those who have limited access to conventional theatre and to develop more original work on challenges face by young people today. Interest in and demand for the organisation's live work continues to grow, and so funding should be raised in order to support this interest.

Reserves Policy: Income and expenditure of the charity fluctuates according to the pattern of grants. Artists are hired per project and financial commitments are limited. Unrestricted funds are used to plan for 3 months core and running costs.

Statement of Trustees' responsibilities: The Trustees are responsible for preparing the annual report and financial statements for each financial year, in accordance with the Charities Act 2011, the Charities (Accounts and Reports) Regulations 2008 and the United Kingdom Generally Accepted Accounting Practice, which give a true and fair view of the incoming resources and application of the resources of the group during the year and the charity's state of affairs at the end of the financial year. In preparing those financial statements, the Trustees are required to: select suitable accounting policies and then apply them consistently; make judgements and estimates that are reasonable and prudent; state whether applicable accounting standards and statements of recommended practice had been followed, subject to any material departures disclosed and explained in the financial statements; prepare the accounts on the going concern basis unless it is inappropriate to presume that the charity will continue in operation. These guidelines run alongside the Company's constitution.

Signed

Dated: 30th November 2023



Trustees' name: Neil Hallett

SUDDEN PRODUCTIONS

England & Wales - Charity number 1018887

Accounts

Report of the trustees

Sudden Productions

Year ended April 2022



Isolated

Young people have had their lives turned upside down during the pandemic: TIME TO REFLECT

SUDDEN
PRODUCTIONS

Sudden Productions

www.suddenproductions.co.uk

Registered Charity No 1018887

Sudden Productions has been in existence since 1993 and has been committed to bringing its productions to those who have limited access to conventional theatre and film-making in Birmingham and the West Midlands. The charity's community programmes deliver social, emotional, physical and educational benefits to young participants. Our core sectors are:

Inclusion: Working with marginalized groups with a keen focus on integration and supporting social cohesion;

Education: Developing confidence and communication, and improving behaviour and attitudes to learning;

Health: Effecting positive improvements in mental and physical health;

Professional Development: Helping to develop the careers of young talents.

We have a track record of educational plays, films, exhibitions, and workshops. Sudden Productions work exclusively with children and young people and produce projects with a focus on the difficult issues and challenges that young people face today. Over the past years we have covered important issues such as racism, homelessness, juvenile delinquency, bullying, unemployment, etc.

Most workshops and performances we offer schools, voluntary groups, youth centres are entirely free. In some places we do charge a very minimum fee (if distant and/or if there is a lot time involved). Our free work gives many disadvantaged young people the chance to benefit from our projects. We work with young people coming off drugs and others attending rehab units, probation centres, pupil referral units social services, and young people off the streets (Homeless) each year and create partnerships with voluntary organizations, youth offending teams, local authorities, statutory bodies, etc on each project we deliver.

Legal and administrative information

Status

Sudden Productions is a registered charity governed by its memorandum and articles of association. The charity is governed by a constitution adopted at the first AGM in 1996 revised in 2005. A new Constitution was adopted by the Trustees on the 10th of August 2008. (charity number 1018887).

Trustees

Neil Hallett
Christine Brueton
Stephen Bradbury

Registered Office

The Warehouse
54-57 Allison Street
Birmingham
B5 5TH

Objectives and activities:

A. Promote, improve develop and maintain public education in, and appreciation of, the art and science of drama in all its aspects by the presentation in public of plays and by such other ways as the society through its committee shall from time to time determine.

B. Educate young people in order to develop their physical, mental and spiritual capacities so that they may grow to full maturity as individuals and as members of society.



Highlights and acknowledgment from the Director

At the beginning of this year, Sudden Productions people naïvely hoped that we might finally experience a “normal year,” ultimately, we still had to juggle between live performances and online workshops. After a COVID-dominated 2020-21, we were glad we could consider focusing again our energy on producing live work that is hard-hitting, challenging and fun: Theatre-in-education which gives a voice to young people and talk about the issues they face every day.

Our optimism was strengthened later in the year by our successful production *ISOLATED*, which was performed at the Midlands Art Centre for young people and the community in April 2022. Reflecting on the impact of Covid-19 and lockdown on Youth Mental Health whilst presenting a play, both deep yet entertaining, felt like we were going forward. We all felt a combination of pride, gratitude, and relief.

Before then, we delivered *FEARFUL* online. When a boy aged 15 was shot and stabbed on Linwood Road, Handsworth, Birmingham, on 21 January 2021 and died in hospital after the attack; we were shocked. This happened in our street! We had been working on Knife Crime Awareness across Birmingham for many years and this tragic event reminded us that this was not the time to let go. The screenings of our short film and the drama workshops on Knife Crime Awareness resulted in positive feedback such as “I Learnt that it is more likely to get stabbed if you have your own” or “It felt real and I feel even thinking about using a knife is wrong.” Our confidence grew.

This year remained tumultuous, our *LOVE TRAP* tour creating an awareness of Child Sexual Abuse and Online grooming was at times online, at times live. *UNITED AGAINST BULLYING* and *THE EDGE* on Teenage Suicide Awareness always remained online. We had to offer more workshops than other years as If you want interaction- both verbal and collaborative among the participants-it is very difficult to manage more than 10 participants in a live, online session. We therefore had to organise several workshops for one youth club or school.

2021-22 was still easier to organise, we had experience and could assess the likely impacts; we knew which steps to take; and we had confidence that life for artists and audiences would return to normal. But on the other hand, as for so many communities across the UK, Sudden Productions’ people felt the cumulative emotional strain. Once again, we rose to that challenge. I want to thank our artists, trustees, partners, and audiences. Each of these groups played an indispensable role in maintaining morale, planning for life after lockdowns and restrictions, and ultimately ensuring that Sudden Productions could return with a main stage production *ISOLATED* in Spring 22. We knew our artistic teams had high quality work ready to launch and we were thankful that our audiences repaid our faith by welcoming back our performances and workshops and returning to the theatre, encouraging our artists, and injecting energy into our plays.

Our financial results for the year, which you can see in the attached accounts, reflect the very unusual environment, much better than last year, the level income remains quite low. We are grateful for the support from national and local Charitable Trusts and Foundations which continued to grant finances to our projects.

We may have been naïve at the start of the year. But we were, and remain, realistic about the power of a group of people united by a love of theatre-in-education and we have big plans for 2023!

With gratitude,



Nowell Wallace
Director, Sudden Productions

Main Projects



UNITED AGAINST BULLYING

The Edge

Incorporating Physical Theatre Sequences, Stage Play, and Drama Workshops to Raise Awareness about Teenage Suicide with Sensitivity

Wednesday 13th April | 1PM
Mac Birmingham

Tik Tok challenges, homeschooling, financial insecurity, and a stockpile of candles. Does any of it matter when your Dad's gone missing in the middle of a pandemic?



In 2021/2022, we worked with the following schools and youth organisations: St Basils Milner court, Waverley studio college, Maryvale community Project, Hillcrest, Hawkesley community centre, All saints, Stonehouse gang youth centre, The Pump youth centre, Small heath youth centre, Holyhead school, Forward Thinking Birmingham (Group of young people attending Birmingham NHS Mental Health Foundation services), Erdington Academy, Bishop Chanoller, Windsor Academy, Holy trinity catholic school, Arena academy, Cadbury sixth form college, Sandwell academy, the Lighthouse youth centre, Krunch, Lozells recreation group, Soho youth project, Concord youth centre, , Naseby youth centre, Stonehouse gang, the Factory young people's centre, Lordswood school, Great Barr academy, Windsor high school and sixth form, Cockshut hill school.

Projects' content

Love Trap	Twenty-two Live and online Workshops Teaching Pack
The Edge	Five Online workshops Online content: Video, case studies, Conversation starters, Build a Hope Box, etc
Fearful	Ten Online Workshops Online content: Video (Short film), Monologue of the Mother (Film), Testimonies, Lesson Plans, etc
Isolated	Twenty-four Live and online Workshops Four Community/Public Performances at the Midlands Arts Centre & Two weeks tour with the play Teaching Pack
United Against Bullying	Three online workshops Online content: Case studies, Help lines, etc

SPECIAL THANKS to our partners, artists and volunteers who make our projects happen! A big thank you to our donors!

THE BORIS KARLOFF CHARITABLE FOUNDATION
THE COLE CHARITABLE TRUST
THE JOSEPH HOPKINS & HENRY JAMES SAYER CHARITY
THE MILLS & REEVE CHARITABLE TRUST
THE WILLIAM A CADBURY CHARITABLE TRUST
The BARON DAVENPORT'S CHARITY
THE MAGDALEN HOSPITAL TRUST
THE EVESON CHARITABLE TRUST
THE ALFRED LEADBEATER TRUST
THE SIR JOHN MIDDLEMORE CHARITABLE TRUST
THE ROGER & DOUGLAS TURNER CHARITABLE TRUST
THE GRANTHAM YORKE TRUST
THE GEORGE HENRY COLLINS CHARITY
THE ARCHER TRUST
THE LEIGH TRUST
THE SECCOMBE TRUST
THE GRIMMITT TRUST
THE EDWARD CADBURY TRUST

THE EDWARD AND DOROTHY CADBURY TRUST
THE HDH WILLS 1965 CHARITABLE TRUST
THE ANGELA GALLAGHER MEMORIAL FUND
THE W.E.D. CHARITABLE TRUST
THE RAINFORD TRUST
THE ERIC W. VINCENT TRUST FUND
THE NORTON FOUNDATION
THE ANTHONY BOURNE FOUNDATION
THE EVA RECKITT TRUST
THE WF SOUTHALL TRUST
THE RICHARD CADBURY CHARITABLE TRUST
THE LILLIE C JOHNSON CHARITABLE TRUST
THE SKIPTON CHARITABLE FOUNDATION
IMI PLC
THE LORD AUSTIN TRUST
THE BLAKEMORE FOUNDATION
THE SYLVIA WADDILOVE FOUNDATION UK
THE EDGAR E. LAWLEY FOUNDATION
THE TRUEMARK TRUST



INDEPENDENT EXAMINERS REPORT

TO THE TRUSTEES OF SUDDEN PRODUCTIONS

I report to the trustees on my examination of the financial statements of Sudden Productions for the year ending 30 April 2022.

Respective Responsibilities of Trustees and Examiner

The charity's trustees are responsible for the preparation of the accounts. The charity's trustees consider that an audit is not required for this year under section 144 of the Charities Act 2011 (the Charities Act) and that an independent examination is needed.

It is my responsibility to:

- examine the accounts under section 145 of the Charities Act,
- to follow the procedures laid down in the general Directions given by the Charity Commission (under section 145(5)(b) of the Charities Act), and
- to state whether particular matters have come to my attention.

Basis of Independent Examiner's Statement

My examination was carried out in accordance with general Directions given by the Charity Commission. An examination includes a review of the accounting records kept by the charity and a comparison of the accounts presented with those records. It also includes consideration of any unusual items or disclosures in the accounts, and seeking explanations from the trustees concerning any such matters. The procedures undertaken do not provide all the evidence that would be required in an audit, and consequently no opinion is given as to whether the accounts present a "true and fair" view and the report is limited to those matters in the statement below.

Independent Examiner's Statement

In connection with my examination, no matter has come to my attention:

- which gives me reasonable cause to believe that in any material respect, the requirements to keep accounting records in accordance with section 130 of the Charities Act, and to prepare accounts which accord with the accounting records and comply with the accounting requirements of the Charities Act, have not been met; or
- to which, in my opinion, attention should be drawn in order to enable a proper understanding of the accounts to be reached.



Jasbir Rai ACMA
Birmingham Voluntary Service Council
138 Digbeth
Birmingham
B5 6DR

13 February 2023

**STATEMENT OF FINANCIAL ACTIVITIES
YEAR ENDED 30 APRIL 2022**

	Note	Unrestricted funds	Restricted funds	Total	Total
		2022	2022	2022	2021
		£	£	£	£
<u>Income from:</u>					
Donations and grants	3	22,850	26,282	49,132	34,020
Other income		-	-	-	-
Total income		<u>22,850</u>	<u>26,282</u>	<u>49,132</u>	<u>34,020</u>
<u>Expenditure on:</u>					
Charitable activities	4	22,795	28,903	51,698	33,348
Total charitable expenditure		<u>22,795</u>	<u>28,903</u>	<u>51,698</u>	<u>33,348</u>
Net (loss)/income for the year/Net movement in funds		55	-2,621	-2,566	672
Transfer		-630	630	-	-
Fund balances at 1 May 2021		-494	1,991	1,497	825
Fund balances at 30 April 2022		<u><u>-1,069</u></u>	<u><u>0</u></u>	<u><u>-1,069</u></u>	<u><u>1497</u></u>

Balance Sheet
As at 31st April 2023

	Note	2022 £	2021 £
Current assets			
Cash at bank and in hand		11	2,037
		<u>11</u>	<u>2,037</u>
Creditors: amounts falling due with one year	8	-1,080	-540
		<u>-1,080</u>	<u>1,497</u>
Net current assets		<u>-1,080</u>	<u>1,497</u>
Total assets less current liabilities		<u><u>-1,069</u></u>	<u><u>1,497</u></u>
Income funds			
Restricted funds	9	0	1,991
Unrestricted funds		-1,069	-494
		<u>-1,069</u>	<u>1,497</u>

The financial statements were approved by the Board of Trustees on the 13th of February and were signed on its behalf by:



Trustee Signature

Trustee Name: Neil Hallett

NOTES TO THE FINANCIAL STATEMENTS YEAR ENDED 30 APRIL 2022

1. Accounting Policies

Accounting convention

The accounts have been prepared in accordance with the "Accounting and Reporting by Charities: Statement of Recommended Practice (SORP) and Financial Reporting Standards applicable in the UK and Republic of Ireland (FRS 102)" (as amended for accounting periods commencing from 1 January 2016). The charity is a "Public Benefit Entity as defined by FRS 102.

The charity has taken advantage of the provisions in the SORP for charities applying FRS 102 Update Bulletin 1 not to prepare a Statement of Cash Flows.

The financial statements are prepared in sterling, which is the functional currency of the charity.

The financial statements have been prepared under the historical cost convention. The principal accounting policies adopted are set out below.

Going concern

At the time of approving the financial statements, the trustees have a reasonable expectation that the charity has adequate resources to continue in operational existence for the foreseeable future. Thus the trustees continue to adopt the going concern basis if accounting in preparing the financial statements.

Charitable funds

Unrestricted funds are available for use at the discretion of the trustees in furtherance of their charitable objectives unless the funds have been designated for other purposes.

Restricted funds are subject to specific conditions by donors as to how they may be used. The purposes and uses of the restricted funds are set out in the notes to the financial statements.

Incoming resources

These are included in the Statement of Financial Activities (SOFA) when:

- The charity becomes legally entitled to the resources after any performance conditions have been met;
- The trustees are virtually certain that they will receive the resources; and
- The monetary value can be measured with sufficient reliability.

Cash donations are recognised on receipt. Other donations are recognised once the charity has been notified of the donation, unless performance conditions require deferral of the amount.

NOTES TO THE FINANCIAL STATEMENTS YEAR ENDED 30 APRIL 2022

1. Accounting Policies (continued)

Resources expended

Charitable activities includes all costs relating to general administration, which support the charitable purpose.

Grants offered subject to conditions, which have not been met at the year-end date are noted as a commitment, but not accrued as expenditure.

Expenditure is accounted for on an accruals basis and has been classified under headings that aggregate all costs related to the category. Where costs cannot be directly attributed to particular headings that have been allocated to activities on a basis consistent with the use of the resources.

Incoming resources with related expenditure

When incoming resources have related expenditure (as with fundraising or contract income) both are reported gross in the SOFA.

Financial instruments

The charity has elected to apply the provisions of Section 11 “Basic Financial Instruments” and Section 12 “Other Financial Issues” of FRS 102 to all of its financial instruments.

Financial instruments are recognised in the charity’s balance sheet when the charity becomes party to the contractual provisions of the instrument.

Financial assets and liabilities are offset, with the net amounts presented in the financial statements, when there is a legally enforceable right to set off the recognised amounts and there is an intention to settle on a net basis or to realise the assets and settle the liability simultaneously.

Basic financial assets

Basic financial assets, which include debtors and cash and bank balances, are initially measured at transaction price, including transaction costs and are subsequently carries at amortised cost using the effective interest method unless the arrangement constitutes a financing transaction, where the transaction is measured at the present value of the future receipts discounted at a market value of interest. Financial assets classified as receivable within one year are not amortised.

NOTES TO THE FINANCIAL STATEMENTS
YEAR ENDED 31 April 2022
Accounting Policies (continued)

Basic financial liabilities

Basic financial liabilities, including creditors and bank loans are initially recognised at transaction price unless the arrangement constitutes a financing transaction, where the debt instrument is measured at the present value of the future payments discounted at a market rate of interest. Financial liabilities classified as payable within one year are not amortised.

De-recognition of financial liabilities

Financial liabilities are derecognised when the charity's contractual obligations expire or are discharged or cancelled.

Pensions

The charity operates a defined contribution pension scheme and the pension charge represents the amounts payable by the charity to the fund for the year.

2. Critical accounting estimates and judgements

In the application of the charity's accounting policies, the trustees are required to make judgements, estimates and assumptions about the carrying amount of assets and liabilities that are not readily apparent from other sources. The estimates and associated assumptions are based on historical experience and other factors that are considered to be relevant. Actual results may differ from these estimates.

The estimates and underlying assumptions are reviewed on an ongoing basis. Revisions to accounting estimates are recognised in the period in which the estimate is revised where the revision affects only that period, or in the period of the revision and future periods where the revision affects both current and future periods.

**NOTES TO THE FINANCIAL STATEMENTS
YEAR ENDED 30 APRIL 2022**

3. Donations and grants

	Restricted funds	Unrestricted funds	Total	Total
	2022	2022	2022	2021
	£	£	£	£
Grants £1,000 and over:				
Garfield Western Foundation	-	-	-	4,000
Richard Kilcuppe's Charity	-	-	-	1,000
Schroeder Charity Trust	-	-	-	2,500
The Alfred Leadbeater Trust	-	2,500	2,500	-
The Angela Gallagher Memorial Fund	1,000	-	1,000	-
The Anthony Bourne Foundation	2,000	-	2,000	-
The Archer Trust	1,500	-	1,500	-
The Baron Davenports's Charity	1,000	-	1,000	-
The Casey Trust	-	-	-	2,000
The Cole Charitable Trust	-	1,000	1,000	1,000
The Edgar E Lawley Foundation	1,500	-	1,500	-
The Edward and Dorothy Cadbury Charitable Trust	-	2,500	2,500	-
The Edward Cadbury Charitable Trust	-	3,000	3,000	3,000
The Eva Reckitt Trust Fund	1,000	-	1,000	1,000
The Eveson Charitable Trust	2,000	-	2,000	2,500
The George Henry Collins Charity	1,000	-	1,000	-
The GJW Turner Trust	-	-	-	1,000
The Grantham Yorke Trust	-	2,500	2,500	-
The Green, Hall Foundation	-	-	-	1,000
The Grimmitt Trust	-	2,000	2,000	2,000

The Haremead Trust	-	-	-	5,000
The Leigh Trust	1,000	-	1,000	-
The Lord Austin Trust		2,000	2,000	
The Magdalen Hospital Trust	-	1,000	1,000	-
The Michael Marsh Charitable Trust	-	-	-	1,000
The Norton Foundation	2,500	-	2,500	-
The Ratcliff Foundation	-	-	-	3,000
The Richard Kilcuppes Charity	-	1,000	1,000	-
The Roger and Douglas Turner Charitable Trust	3,000	-	3,000	-
The Rowlands Trust	-	-	-	1,370
The Sir John Middlemore Charitable Trust	-	2,000	2,000	-
The Skipton Charitable Foundation	-	1,182	1,182	-
The Southall Trust	-	2,500	2,500	-
The Sylvia Waddilove Foundation UK	-	1,000	1,000	-
The Truemark Trust	1,000	-	1,000	-
Small grants under £1,000	<u>4,350</u>	<u>2,100</u>	<u>6,450</u>	<u>2,650</u>
Total for the year	<u>22,850</u>	<u>26,282</u>	<u>49,132</u>	<u>34,020</u>
Total for 2021	<u>18,600</u>	<u>15,420</u>	<u>34,020</u>	

**NOTES TO THE FINANCIAL STATEMENTS
YEAR ENDED 30 APRIL 2022**

4. Expenditure on charitable activities

	2022	2021
	£	£
Salary – Project Manager (note 6)	22,712	12,135
Project Manager fees	-	11,923
Artists	20,211	6,612
Production costs and room hire	1,263	-
Insurance, post, phone and stationery	3,865	935
Website	2,748	351
Transport and travel costs	359	390
Training and memberships	-	462
Governance costs	540	540
Total	<u>51,698</u>	<u>33,348</u>

Analysis by fund

	2022	2021
	£	£
Unrestricted funds	22,795	12,565
Restricted funds	28,903	20,783
Total	<u>51,698</u>	<u>33,348</u>

5. Trustees

None of the trustees (or any persons connected with them) received any remuneration or benefits from the charity during the year (2021 - £nil).

**NOTES TO THE FINANCIAL STATEMENTS
YEAR ENDED 30 APRIL 2022**

6. Staff costs

	2022	2021
	£	£
Wages and salaries	18,838	10,992
Social security costs	2,592	758
Other pension costs	1,282	385
Total	<u>22,712</u>	<u>12,135</u>

The average number of administration employees during the year was 1 (2021 – 1), who did not earn more than £60,000 in either year.

7. Financial instruments

	2022	2021
	£	£
Carrying amount of financial assets		
Debt instruments measured at amortised cost	<u>-</u>	<u>-</u>
Carrying value of financial liabilities		
Measured on amortised costs	<u>-</u>	<u>-</u>

8. Creditors: amounts falling due within one year

	2022	2021
	£	£
Accruals and deferred income	1,080	540
	<u>1,080</u>	<u>540</u>

**NOTES TO THE FINANCIAL STATEMENTS
YEAR ENDED 30 APRIL 2022**

9. Restricted funds

The income funds of the charity include restricted funds comprising the following unexpended balances of donations and grants held on trust for specific purposes:

Current Year

	Movement in funds				
	Balance at 1 May 2021	Transfer	Incoming resources	Resources expended	Balance at 30 April 2022
	£	£	£	£	£
Fearful	1,991	630	0	2,621	-
Love Trap	-	-	7,500	7,500	-
Isolated	-	-	18,782	18,782	-
Total	1,991	630	26,282	28,903	-

Prior Year

	Movement in funds				
	Balance at 1 May 2020	Transfer	Incoming resources	Resources expended	Balance at 30 April 2021
	£	£	£	£	£
Fearful	2544	10	12,000	12,563	1991
The Edge	-	330	600	930	-
Love Trap	-	480	2,000	2,480	-
Isolated	-	810	4000	4,810	-
Total	2,544	1,630	18,600	20,783	1,991

Restricted funds represent grants and donations given to support the production of various performances..

**NOTES TO THE FINANCIAL STATEMENTS
YEAR ENDED 30 APRIL 2022**

10. Analysis of net assets between funds

Fund balances at 31 April 2022 and 30 April 2022 are represented by current assets/(liabilities).

11. Related party transaction

There were no related party transactions during the year (2021 – Nil).

Treasurer's report

Financial review: The pandemic resulted in a significant challenge to raise income in 2021 and we still struggled in 2022 with a total income of £49,132. With funds closing temporarily and others trusts having to manage a loss of income themselves, Sudden Productions had to carry out their work differently. Fortunately, artists are contracted per project only and we didn't have to cancel contracts. We managed to finance the wage of our project director and the fees of artists to deliver our main projects. The project director in charge of coordinating all aspects of all projects and running the company was paid £18,838 for the year (After Tax). Further £20,211 were used to pay fees of creative teams, facilitators and actors.

Our creative response to school and theatre closures and to a decline in income, allowed us to achieve our targets in terms of participants and number of youth organisations and schools involved in our programs.

It will be paramount for Sudden Productions to raise more finances in 2023 in order to bring our productions to those who have limited access to conventional theatre. Interest in and demand for the organisation's live work continues to grow, and so funding should be raised in order to support this interest.

Reserves Policy: Income and expenditure of the charity fluctuates according to the pattern of grants. On-going Projects are heavily supported by volunteers. Artists are hired per project and financial commitments are limited.

Statement of Trustees' responsibilities: The Trustees are responsible for preparing the annual report and financial statements for each financial year, in accordance with the Charities Act 2011, the Charities (Accounts and Reports) Regulations 2008 and the United Kingdom Generally Accepted Accounting Practice, which give a true and fair view of the incoming resources and application of the resources of the group during the year and the charity's state of affairs at the end of the financial year. In preparing those financial statements, the Trustees are required to: select suitable accounting policies and then apply them consistently; make judgements and estimates that are reasonable and prudent; state whether applicable accounting standards and statements of recommended practice had been followed, subject to any material departures disclosed and explained in the financial statements; prepare the accounts on the going concern basis unless it is inappropriate to presume that the charity will continue in operation. These guidelines run alongside the Company's constitution.

Signed

Dated: 13/02/2023



Trustees' name: Neil Hallett



SUDDEN PRODUCTIONS

England & Wales - Charity number 1018887

Accounts

Report of the trustees

Sudden Productions

Year ended April 2021



Love Trap

*Child Grooming awareness
2021 Project*

SUDDEN
PRODUCTIONS

Sudden Productions

www.suddenproductions.co.uk

Registered Charity No 1018887

Sudden Productions has been in existence since 1993 and has been committed to bringing its productions to those who have limited access to conventional theatre and film-making in Birmingham and the West Midlands. The charity's community programmes deliver social, emotional, physical and educational benefits to young participants. Our core sectors are:

Inclusion: Working with marginalized groups with a keen focus on integration and supporting social cohesion;

Education: Developing confidence and communication, and improving behaviour and attitudes to learning;

Health: Effecting positive improvements in mental and physical health;

Professional Development: Helping to develop the careers of young talents.

We have a track record of educational plays, films, exhibitions, and workshops. Sudden Productions work exclusively with children and young people and produce projects with a focus on the difficult issues and challenges that young people face today. Over the past years we have covered important issues such as racism, homelessness, juvenile delinquency, bullying, unemployment, etc.

Most workshops and performances we offer schools, voluntary groups, youth centres are entirely free. In some places we do charge a very minimum fee (if distant and/or if there is a lot time involved). Our free work gives many disadvantaged young people the chance to benefit from our projects. We work with young people coming off drugs and others attending rehab units, probation centres, pupil referral units social services, and young people off the streets (Homeless) each year and create partnerships with voluntary organizations, youth offending teams, local authorities, statutory bodies, etc on each project we deliver.

Legal and administrative information

Status

Sudden Productions is a registered charity governed by its memorandum and articles of association. The charity is governed by a constitution adopted at the first AGM in 1996 revised in 2005. A new Constitution was adopted by the Trustees on the 10th of August 2008. (charity number 1018887).

Trustees

Neil Hallett
Christine Brueton
Stephen Bradbury

Registered Office

167 Linwood Road
Handsworth
Birmingham
B21 9JQ

Objectives and activities:

A. Promote, improve develop and maintain public education in, and appreciation of, the art and science of drama in all its aspects by the presentation in public of plays and by such other ways as the society through its committee shall from time to time determine.

B. Educate young people in order to develop their physical, mental and spiritual capacities so that they may grow to full maturity as individuals and as members of society.

Highlights and acknowledgment from the Director

It is with immense pride and gratitude that I present the Annual Report for 2020/2021, detailing the resilience, innovation, and creativity with which Sudden Productions met the challenges of the year. In a year of extraordinary hardship and disruption, the Company has gone from facing lockdown, school closures and cancellations of live touring productions to innovative responses in the form of Online classes, performances and workshops and the production of Digital resources.

We delivered artistic and educational projects, online regional touring and access programs to the high standard expected of the company to 20 youth organisations. Many schools and youth organisations were involved in several projects. We presented yet more original work this year. Pieces of new writing produced in 2020/2021 included Love Trap, Fearful, The Edge and Isolated. The plays ranged from an examination of the emotions, hopes and fears of two girls during lockdown to a new hard-hitting take on knife crime, to an incendiary examination of Child Grooming or an uncompromising tale of depression creating awareness of Teenage Suicide.

Sudden Productions was created to support young people who aren't fortunate enough to have the same opportunities as some others, whether because they come from socially and economically deprived areas or whether they come from communities that generally have half the access to arts education that their peers do. A wealth of children and young people have had their lives turned upside down by the pandemic, with almost every young person having had to adjust to dramatic changes in their education or employment, routine, and home life. Some have experienced traumatic experiences during the lockdown period and groups who were already disadvantaged are now highly likely to become more marginalised. Our Access programs in 2020/2021 targeted those hard-to-reach young communities and focused on delivering online plays and drama workshops as well as playwriting courses and competitions, poster-making workshops, writing about personal experiences and sharing ideas on how to create awareness on various topic such as mental health or knife crime.

As our financial statements show, the decline in income for the financial year is important as for those recorded by peers in regional theatre and arts during COVID. The Covid-19 pandemic only had a moderate impact on our work and finances for the year ended April 2020 as we managed to achieve most of our targets and finance our projects before the first lockdown. However 2020/2021 would be a year like no other as live touring was halted to protect artists, creatives, and the community from the threat of the COVID-19 pandemic. It is our highly valued relationship with our regular donors who truly understand the work we do that enabled us to adapt and achieve great things this year. On behalf of Sudden Productions, I would also like to thank them once again.

The resilience, creativity, and hard work of Sudden Productions allowed the organisation to rise to the challenges of 2020/2021 with curiosity, flexibility, and innovation in the face of a year of unprecedented difficulty. Despite the obvious impact of Covid on our operations, the pandemic also highlighted unique benefits of our small company. Firstly, as we looked to find imaginative new ways to keep our artists working and our audiences engaged, we saw significant benefit in our company's strategic move to work online. And secondly, the smaller scale of our plays, presents us with valuable options for our return to live theatre. This diversity in scale and presenting opportunities positions our company well for COVID recovery. Over the next two years we aim at producing new original plays and expand our education and youth programs regionally.

With gratitude,



Nowell Wallace
Director, Sudden Productions

Main Projects



Child Grooming Awareness Through Theatre & Workshops

Love Trap



Film-Stage Play - Workshops & Resource Pack

Fearful

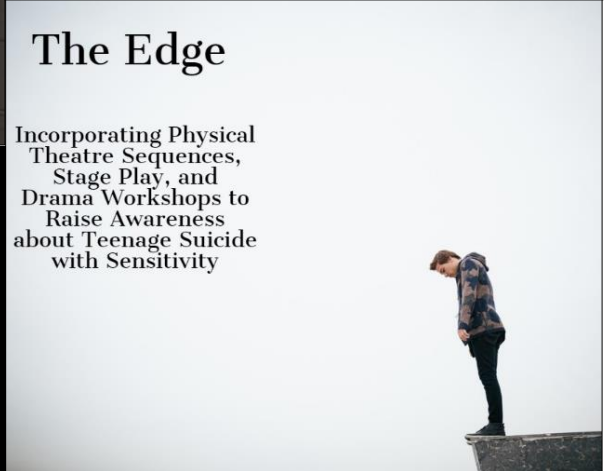
INFE CRIME



ISOLATED

theatre in education

Young people have had their lives turned upside down during the pandemic: TIME TO REFLECT



The Edge

Incorporating Physical Theatre Sequences, Stage Play, and Drama Workshops to Raise Awareness about Teenage Suicide with Sensitivity

In 2020/2021, we worked with the following schools and youth organisations: Small Heath Youth Centre, The Pump, The Lighthouse, BOA Academy, Concord Youth Centre, Hawkesley Youth Centre, St Basils Milner Court, All Saints Youth Project, the Krunch, Solihull Library, Bordesley Green Girls' School, Cadbury College, St Peters' School, Waverley Studio College, Haven Community Project, Wednesfield High Academy, Heath Park Central, Finham Park School, Birmingham Youth Services, Phoenix Collegiate.



LUCY, YOUNG AND HOMELESS

Projects' content

- Love Trap** Online content: Workshop – teaching resources
Live Tour: Planned for 2022
- The Edge** Online content: Video (Full-length play), Online workshops,
Case studies, Creative colouring positive statements, Conversation starts, Build a Hope Box, Facts and Myths about Youth Suicide, Playwriting class: Write a short play which creates an awareness of teenage suicide
- Fearful** Online content: Video (Short film), Monologue of the Mother, Online workshop, Testimonies, Pledges, Lesson Plans, Links to further videos, Attitudes towards Knives, Knives and the Law, Injuries, Facts, etc.
Poetry Class & Poetry Competition: Write a poem about Knife Crime Awareness
- Isolated** Home sweet home weekly newsletter (Tips to Stay safe at home: Healthy, busy and collected: Fun activities and advice for Young People – during lockdown) from April 2020
Playwriting competition – Playwriting course
Live Tour to take place in 2022
- Lucy, Young and Homeless** Online content: New Resources for the project (Facts, Case studies, Play, Simulation, Help lines)
Playwriting Class

SPECIAL THANKS to our partners, artists and volunteers who make our projects happen! A big thank you to our donors!

The Baron Davenport's Charity	The Green Hall Foundation	The Eveson Charitable Trust
Garfield Weston Foundation	Schroeder Charity Trust	The Haramead Trust
The William Dudley Trust	J C Seccombe Trust	The G J W Turner Trust
The Cole Charitable Trust	The Rowlands Trust	Blakemore Foundation
The Jarman Trust	The Michael Marsh Charitable Trust	Eric Vincent Trust
The Richard Kilcuppe Charity	The Edward Cadbury Charitable Trust	The Grimmitt Trust
The Ratcliff Foundation Foundation	Bite Size Pieces	The Eva Reckitt Trust Fund
The Casey Trust	IMI Plc	

INDEPENDENT EXAMINERS REPORT

TO THE TRUSTEES OF SUDDEN PRODUCTIONS

I report to the trustees on my examination of the financial statements of Sudden Productions for the year ending 30 April 2021.

Respective Responsibilities of Trustees and Examiner

The charity's trustees are responsible for the preparation of the accounts. The charity's trustees consider that an audit is not required for this year under section 144 of the Charities Act 2011 (the Charities Act) and that an independent examination is needed.

It is my responsibility to:

- examine the accounts under section 145 of the Charities Act,
- to follow the procedures laid down in the general Directions given by the Charity Commission (under section 145(5)(b) of the Charities Act), and
- to state whether particular matters have come to my attention.

Basis of Independent Examiner's Statement

My examination was carried out in accordance with general Directions given by the Charity Commission. An examination includes a review of the accounting records kept by the charity and a comparison of the accounts presented with those records. It also includes consideration of any unusual items or disclosures in the accounts, and seeking explanations from the trustees concerning any such matters. The procedures undertaken do not provide all the evidence that would be required in an audit, and consequently no opinion is given as to whether the accounts present a "true and fair" view and the report is limited to those matters in the statement below.

Independent Examiner's Statement

In connection with my examination, no matter has come to my attention:

- which gives me reasonable cause to believe that in any material respect, the requirements to keep accounting records in accordance with section 130 of the Charities Act, and to prepare accounts which accord with the accounting records and comply with the accounting requirements of the Charities Act, have not been met; or
- to which, in my opinion, attention should be drawn in order to enable a proper understanding of the accounts to be reached.



Paul Bowater ACA
Birmingham Voluntary Service Council
138 Digbeth
Birmingham
B5 6DR

4 February 2022

**STATEMENT OF FINANCIAL ACTIVITIES
YEAR ENDED 30 APRIL 2021**

	N o t e	Unrestricted funds	Restricted funds	Total	Total
		2021	2021	2021	2020
		£	£	£	£
<u>Income from:</u>					
Donations and grants	3	15,420	18,600	34,020	52,150
Other income		-	-	-	200
Total income		<u>15,420</u>	<u>18,600</u>	<u>34,020</u>	<u>52,350</u>
<u>Expenditure on:</u>					
Charitable activities	4	12,565	20,783	33,348	55,838
Total charitable expenditure		<u>12,565</u>	<u>20,783</u>	<u>33,348</u>	<u>55,838</u>
Net (loss)/income for the year/Net movement in funds		2,855	(2,183)	672	(3,488)
Transfer		(1,630)	1,630	-	-
Fund balances at 1 May 2020		(1,719)	2,544	825	4,313
Fund balances at 30 April 2021		<u>(494)</u>	<u>1,991</u>	<u>1,497</u>	<u>825</u>

**BALANCE SHEET
AS AT 30 APRIL 2021**

	Note	2021 £	2020 £
Current assets			
Cash at bank and in hand		2,037	1,325
		<u>2,037</u>	<u>1,325</u>
Creditors: amounts falling due with one year	8	(540)	(500)
Net current assets		<u>1,497</u>	<u>825</u>
Total assets less current liabilities		<u>1,497</u>	<u>825</u>
Income funds			
Restricted funds	9	1,991	2,544
Unrestricted funds		(494)	(1,719)
		<u>1,497</u>	<u>825</u>

The financial statements were approved by the Board of Trustees on the 4th of February 2022, and signed on behalf of the board by:

Neil Hallett
Trustee



NOTES TO THE FINANCIAL STATEMENTS YEAR ENDED 30 APRIL 2021

1. Accounting Policies

Accounting convention

The accounts have been prepared in accordance with the “Accounting and Reporting by Charities: Statement of Recommended Practice (SORP) and Financial Reporting Standards applicable in the UK and Republic of Ireland (FRS 102)” (as amended for accounting periods commencing from 1 January 2016). The charity is a “Public Benefit Entity as defined by FRS 102.

The charity has taken advantage of the provisions in the SORP for charities applying FRS 102 Update Bulletin 1 not to prepare a Statement of Cash Flows.

The financial statements are prepared in sterling, which is the functional currency of the charity.

The financial statements have been prepared under the historical cost convention. The principal accounting policies adopted are set out below.

Going concern

At the time of approving the financial statements, the trustees have a reasonable expectation that the charity has adequate resources to continue in operational existence for the foreseeable future. Thus the trustees continue to adopt the going concern basis if accounting in preparing the financial statements.

Charitable funds

Unrestricted funds are available for use at the discretion of the trustees in furtherance of their charitable objectives unless the funds have been designated for other purposes.

Restricted funds are subject to specific conditions by donors as to how they may be used. The purposes and uses of the restricted funds are set out in the notes to the financial statements.

Incoming resources

These are included in the Statement of Financial Activities (SOFA) when:

- The charity becomes legally entitled to the resources after any performance conditions have been met;
- The trustees are virtually certain that they will receive the resources; and
- The monetary value can be measured with sufficient reliability.

Cash donations are recognised on receipt. Other donations are recognised once the charity has been notified of the donation, unless performance conditions require deferral of the amount.

NOTES TO THE FINANCIAL STATEMENTS YEAR ENDED 30 APRIL 2021

1. Accounting Policies (continued)

Resources expended

Charitable activities includes all costs relating to general administration, which support the charitable purpose.

Grants offered subject to conditions, which have not been met at the year-end date are noted as a commitment, but not accrued as expenditure.

Expenditure is accounted for on an accruals basis and has been classified under headings that aggregate all costs related to the category. Where costs cannot be directly attributed to particular headings that have been allocated to activities on a basis consistent with the use of the resources.

Incoming resources with related expenditure

When incoming resources have related expenditure (as with fundraising or contract income) both are reported gross in the SOFA.

Financial instruments

The charity has elected to apply the provisions of Section 11 “Basic Financial Instruments” and Section 12 “Other Financial Issues” of FRS 102 to all of its financial instruments.

Financial instruments are recognised in the charity’s balance sheet when the charity becomes party to the contractual provisions of the instrument.

Financial assets and liabilities are offset, with the net amounts presented in the financial statements, when there is a legally enforceable right to set off the recognised amounts and there is an intention to settle on a net basis or to realise the assets and settle the liability simultaneously.

Basic financial assets

Basic financial assets, which include debtors and cash and bank balances, are initially measured at transaction price, including transaction costs and are subsequently carries at amortised cost using the effective interest method unless the arrangement constitutes a financing transaction, where the transaction is measured at the present value of the future receipts discounted at a market value of interest. Financial assets classified as receivable within one year are not amortised.

NOTES TO THE FINANCIAL STATEMENTS YEAR ENDED 31 MAY 2020

1. Accounting Policies (continued)

Basic financial liabilities

Basic financial liabilities, including creditors and bank loans are initially recognised at transaction price unless the arrangement constitutes a financing transaction, where the debt instrument is measured at the present value of the future payments discounted at a market rate of interest. Financial liabilities classified as payable within one year are not amortised.

De-recognition of financial liabilities

Financial liabilities are derecognised when the charity's contractual obligations expire or are discharged or cancelled.

Pensions

The charity operates a defined contribution pension scheme and the pension charge represents the amounts payable by the charity to the fund for the year.

2. Critical accounting estimates and judgements

In the application of the charity's accounting policies, the trustees are required to make judgements, estimates and assumptions about the carrying amount of assets and liabilities that are not readily apparent from other sources. The estimates and associated assumptions are based on historical experience and other factors that are considered to be relevant. Actual results may differ from these estimates.

The estimates and underlying assumptions are reviewed on an ongoing basis. Revisions to accounting estimates are recognised in the period in which the estimate is revised where the revision affects only that period, or in the period of the revision and future periods where the revision affects both current and future periods.

NOTES TO THE FINANCIAL STATEMENTS
YEAR ENDED 30 APRIL 2021

3. Donations and grants

	Restricted Funds	Unrestricted funds	Total	Total
	2021 £	2021 £	2021 £	2020 £
Grants £1,000 and over:				
Garfield Western Foundation	4,000	-	4,000	-
The Green, Hall Foundation	1,000	-	1,000	-
Schroeder Charity Trust	-	2,500	2,500	-
The Rowlands Trust	-	1,370	1,370	-
The Haremead Trust	-	5,000	5,000	-
The Ratcliff Foundation	3,000	-	3,000	-
The Eva Reckitt Trust Fund	-	1,000	1,000	-
The Casey Trust	2,000	-	2,000	-
Sheldon Trust	-	-	-	5,000
The Field Family Charitable Trust	-	-	-	3,500
The Doris Pacey and the Dr Michael and Anna Brynberg Charitable Foundations	-	-	-	3,300
The Roger and Douglas Turner Charitable Trust	-	-	-	3,000
The Eveson Charitable Trust	-	2,500	2,500	3,000
The Norton Foundation	-	-	-	2,500
The 29 th May 1961 Charitable Trust	-	-	-	2,000
The Edward Cadbury Charitable Trust	3,000	-	3,000	2,000
The Southall Trust	-	-	-	2,000
Edgar E Lawley Foundation	-	-	-	1,500
The Leigh Trust	-	-	-	1,000
Richard Kilcuppe's Charity	-	1,000	1,000	1,000
The Archer Trust	-	-	-	1,000
The Grimmit Trust	2,000	-	2,000	1,000
St James Place Foundation	-	-	-	1,000
The Lord Austin Trust	-	-	-	1,000
The Cole Charitable Trust	1,000	-	1,000	1,000
George Bairstow Charitable Trust	-	-	-	1,000
George Henry Collins Charity	-	-	-	1,000
The GJW Turner Trust	-	1,000	1,000	1,000
The Keith and Joan Mindelsohn Charitable Trust	-	-	-	1,000
The Edith Murphy Foundation	-	-	-	1,000
The Edward and Dorothy Cadbury Charitable Trust	-	-	-	1,000
Sylvia Waddilove Foundation UK	-	-	-	1,000
The Michael Marsh Charitable Trust	1,000	-	1,000	1,000
Small grants under £1,000	1,600	1,050	2,650	9,350
Total for the year	<u>18,600</u>	<u>15,420</u>	<u>34,020</u>	<u>52,150</u>
Total for 2020	<u>43,750</u>	<u>8,400</u>	<u>52,150</u>	

**NOTES TO THE FINANCIAL STATEMENTS
YEAR ENDED 30 APRIL 2021**

4. Expenditure on charitable activities

	2021	2020
	£	£
Salary – Project Manager (note 6)	12,135	-
Project Manager fees	11,923	23,695
Artists - Creative Team	6,430	9,501
Artists (cast, facilitators and other artists)	182	17,449
Production costs and room hire	-	1,108
Insurance, post, phone and stationery	935	1,595
Website	351	500
Transport and travel costs	390	1,490
Training and memberships	462	-
Governance costs	540	500
	<u>33,348</u>	<u>55,838</u>

Analysis by fund

Unrestricted funds	12,565	11,222
Restricted funds	20,783	44,616
	<u>33,348</u>	<u>55,838</u>

5. Trustees

None of the trustees (or any persons connected with them) received any remuneration or benefits from the charity during the year (2020 - £nil).

**NOTES TO THE FINANCIAL STATEMENTS
YEAR ENDED 30 APRIL 2021**

6. Staff costs

	2021	2020
	£	£
Wages and salaries	10,992	-
Social security costs	758	-
Other pension costs	385	-
	<u>12,135</u>	<u>-</u>

The average number of administration employees during the year was 1 (2020 – 0), who did not earn more than £60,000 in either year.

7. Financial instruments

	2021	2020
	£	£
Carrying amount of financial assets		
Debt instruments measured at amortised cost	<u>-</u>	<u>-</u>
Carrying value of financial liabilities		
Measured on amortised costs	<u>-</u>	<u>-</u>

8. Creditors: amounts falling due within one year

	2021	2020
	£	£
Accruals and deferred income	540	500
	<u>540</u>	<u>500</u>

**NOTES TO THE FINANCIAL STATEMENTS
YEAR ENDED 30 APRIL 2021**

9. Restricted funds

The income funds of the charity include restricted funds comprising the following unexpended balances of donations and grants held on trust for specific purposes:

Current year

	Balance at 1 May 2020	Transfer	Movement in funds Incoming resources	Resources expended	Balance at 30 April 2021
	£	£	£	£	£
Fearful	2,544	10	12,000	12,563	1,991
The Edge	-	330	600	930	-
Love Trap	-	480	2,000	2,480	-
Isolated	-	810	4,000	4,810	-
	<u>2,544</u>	<u>1,630</u>	<u>18,600</u>	<u>20,783</u>	<u>1,991</u>

Prior year

	Balance at 1 May 2019	Transfer	Movement in funds Incoming resources	Resources expended	Balance at 30 April 2020
	£	£	£	£	£
The Edge	345	573	20,550	21,168	-
Fearful	527	-	19,000	16,983	2,544
Out Loud	256	589	4,500	5,345	-
Love Trap	1,048	72	-	1,120	-
	<u>2,176</u>	<u>1,234</u>	<u>43,750</u>	<u>44,616</u>	<u>2,544</u>

Restricted funds represent grants and donations given to support the production of various performances..

**NOTES TO THE FINANCIAL STATEMENTS
YEAR ENDED 30 APRIL 2021**

10. Analysis of net assets between funds

Fund balances at 31 April 2021 and 30 April 2020 are represented by current assets/(liabilities).

11. Related party transaction

There were no related party transactions during the year (2020 – Nil).

Treasurer's report

Financial review: With a total income of £34,020, the pandemic resulted in a significant decline in our income in 2021. With funds closing temporarily and others trusts having to manage a loss of income themselves, Sudden Productions had to carry out their work differently. Fortunately, artists are contracted per project only and we didn't have to cancel contracts. We managed to finance the wage of our director (part-time) and the fees of a playwright and workshop facilitator to run all digital / online programs. Our creative response to school and theatre closures and to a decline in income, allowed us to achieve our targets in terms of participants and number of youth organisations and schools involved in our programs.

The company's main expenditures were project management and artists fees: the project director coordinates all aspects of all projects and runs the company; he was also in charge of facilitating programs such as Fearful or The Edge. In December 2020, the project director was employed by the charity (Salary of £12,135), before then he received fees (Total of £11,923). £6,430 were used to pay fees of a Playwright and Workshop Facilitator to carry out online programs and workshops.

It will be paramount for Sudden Productions to raise more finances in 2022 and 2023 in order to start touring again and bring its productions to those who have limited access to conventional theatre. Interest in and demand for the organisation's live work continues to grow, and so funding should be raised in order to support this interest.

Reserves Policy: Income and expenditure of the charity fluctuates according to the pattern of grants. On-going Projects are heavily supported by volunteers. Artists are hired per project and financial commitments are limited.

Statement of Trustees' responsibilities: The Trustees are responsible for preparing the annual report and financial statements for each financial year, in accordance with the Charities Act 2011, the Charities (Accounts and Reports) Regulations 2008 and the United Kingdom Generally Accepted Accounting Practice, which give a true and fair view of the incoming resources and application of the resources of the group during the year and the charity's state of affairs at the end of the financial year. In preparing those financial statements, the Trustees are required to: select suitable accounting policies and then apply them consistently; make judgements and estimates that are reasonable and prudent; state whether applicable accounting standards and statements of recommended practice had been followed, subject to any material departures disclosed and explained in the financial statements; prepare the accounts on the going concern basis unless it is inappropriate to presume that the charity will continue in operation. These guidelines run alongside the Company's constitution.

Signed



Dated: 4th February 2022

Trustees' name: Neil Hallett