

FREIGHTLINERS FARM LIMITED

England & Wales · Charity number 1014216

Details

Other names FREIGHTLINERS CITY, FREIGHTLINERS FARM LTD

Status Registered

Legal form Charitable company

Company number [02740034](#)

Registered 1992-09-11

Register [View on the Charity Commission register](#)

Contact

Address Freightliners Farm Ltd
City Farm
Sheringham Road
London
N7 8PF

Phone 02076090467

Email administration@freightlinersfarm.org.uk

Website www.freightlinersfarm.org.uk

Activities

Objects: A) TO PROMOTE THE BENEFIT OF YOUNG PERSONS AND SUBJECT THERETO FOR INHABITANTS OF THE LONDON BOROUGHS OF ISLINGTON AND CAMDEN AND THIER ENVIRONS ("THE AREA") WITHOUT DISTINCTION OF SEX OR OF POLITICAL, RELIGIOUS OR OTHER OPINIONS BY ASSOCIATING WITH THE LOCAL AUTHORITIES, VOLUNTARY ORGANISATIONS AND INHABITANTS IN A COMMON EFFORT TO ADVANCE EDUCATION AND TO PROVIDE FACILITIES IN THE INTEREST OF SOCIAL WELFARE FOR RECREATION AND OTHER LEISURE TIME OCCUPATIONS WITH THE OBJECT OF IMPROVING THE QUALITY OF LIFE FOR THE THE INHABITANTS OF THE AREA AND PARTICULARY THOSE WHO HAVE NEED OF SUCH FACILITIES BY REASON OF THEIR INFIRMITY OR DISABLEMENT POVERTY OR ECONOMIC OR SOCIAL CIRCUMSTANCE; B) TO ADVANCE THE EDUCATION OF YOUNG PERSONS AND SUBJECT THERETO FOR INHABITANTS OF THE AREA IN AGRICULTURE HOME CRAFTS COUNTRY LIFE AND RELATED SUBJECTS; C) TO PROMOTE AMONG THE YOUNG PERSONS AND SUBJECT THERETO AMONG INHABITANTS OF THE AREA HUMANITY AND MORALITY BY EDUCATING THEM IN THE CARE AND CONSIDERATION FOR ALL ANIMALS PARTICULARY ANIMALS IN NEED OF CARE AND PROTECTION AND FOR THESE PURPOSES TO CARE FOR AND EXHIBIT ANIMALS IN COMMON AGRICULTURAL AND DOMESTIC USE AND RARE BREEDS OF FARM ANIMALS SO THAT THE PUBLIC WILL LEARN A GREATER AWARENESS OF AND APPRECIATION FOR SUCH ANIMALS

Activities: Freightliners Farm is a city farm based in Islington, London. It aims to provide a rural type environment in an urban setting, which is open and accesible to all. The focus is on education, community participation and access to opportunities particularly for isolated and vulnerable people. Activities are based around farming, horticulture, animal care, crafts, food production and the environment.

Classification

- **How:** Provides Human Resources, Provides Buildings/facilities/open Space, Provides Services, Provides Advocacy/advice/information
- **What:** General Charitable Purposes, Education/training, The Advancement Of Health Or Saving Of Lives, Disability, Arts/culture/heritage/science, Animals, Environment/conservation/heritage, Economic/community Development/employment, Recreation
- **Who:** Children/young People, Elderly/old People, People With Disabilities, People Of A Particular Ethnic Or Racial Origin, Other Charities Or Voluntary Bodies, Other Defined Groups, The General Public/mankind

Geography

- **Area of benefit:** LONDON BOROUGHS OF ISLINGTON AND CAMDEN
- Camden
- City Of London
- Hackney
- Haringey
- Islington

Finances

Period end	Income	Expenditure	Assets	Employees
2024-09-30	£206,520	£205,559	-	-
2023-09-30	£196,099	£210,033	-	-
2022-09-30	£232,119	£234,825	-	-
2021-09-30	£212,663	£215,023	-	-
2020-09-30	£215,253	£231,705	-	-

Trustees

Name	Role	Appointed
Laura MacKennon		2024-10-03
Mark Rowe		2020-04-16
Owen Seigo Robinson		2014-03-19
Thomas Nicolas Bailly		2025-07-24

FREIGHTLINERS FARM LIMITED

England & Wales - Charity number 1014216

Accounts

REGISTERED COMPANY NUMBER: 02740034 (England and Wales)
REGISTERED CHARITY NUMBER: 1014216

Report of the Trustees and
Financial Statements for the Year Ended 30 September 2024
for
Freightliners Farm Limited
(A Company Limited by Guarantee)

Prestons & Jacksons Partnership LLP
364 - 368 Cranbrook Road
Ilford
Essex
IG2 6HY

Freightliners Farm Limited

Contents of the Financial Statements
for the Year Ended 30 September 2024

	Page
Report of the Trustees	1 to 7
Independent Examiner's Report	8
Statement of Financial Activities	9
Balance Sheet	10 to 11
Notes to the Financial Statements	12 to 21
Detailed Statement of Financial Activities	22 to 23

Freightliners Farm Limited

Report of the Trustees for the Year Ended 30 September 2024

The trustees who are also directors of the charity for the purposes of the Companies Act 2006, present their report with the financial statements of the charity for the year ended 30 September 2024. The trustees have adopted the provisions of Accounting and Reporting by Charities: Statement of Recommended Practice applicable to charities preparing their accounts in accordance with the Financial Reporting Standard applicable in the UK and Republic of Ireland (FRS 102) (effective 1 January 2019).

OBJECTIVES AND ACTIVITIES

The objects of the charity are:

- Improve quality of life particularly for those most in need;
- Promote community participation, education and skills development;
- Promote caring, nurturing and respect for others, the natural and built environment and all living things within the London Boroughs of Islington, Hackney, Haringey, Camden and their environs.

The charity's aims including the changes or differences it seeks to make through its activities.

The charity aims to achieve the above objectives by means of:

- Associating with the local authorities, voluntary organisations and inhabitants in a common effort to provide facilities in the interest of social welfare for recreation and other leisure time occupations;
- providing learning opportunities covering agriculture, horticulture, home crafts, country life, the natural environment and related subjects;
- Educating people in the care and consideration for all animals particularly animals in need of care and protection. For these purposes to care for and exhibit animals in common agricultural and domestic use and rare breeds of farm animals so that the public will have a greater awareness of and appreciation for such animals;
- Providing a rural type of outdoor environment in the inner city which enables urban people to access a little bit of the countryside; and
- Demonstrating social, economic and environmental sustainability through modelling of practices, use of technology, fair access, enterprise and involvement.

In setting our objectives and planning our activities, the Trustees have given careful consideration to the Charity Commission's guidance on public benefit.

Summary of the main activities of the charity in relation to its objects

The diverse range of activities which are carried out by the Farm include project work, commissioned services, social enterprise and ongoing development work. In pursuit of its stated objectives, the charity's activities can be classified according to the aims of individual pieces of work as follows:

- Community support by providing facilities in the interest of social welfare for therapy, recreation and other leisure time occupations.
- Education by providing training and learning opportunities.
- Environmental awareness by providing facilities to improve appreciation, consideration and care for all animals and their habitats; and
- Social enterprise by providing unique opportunities for local people, developing educational food programmes, and supplying local goods and services in an accessible manner and at a reasonable cost.

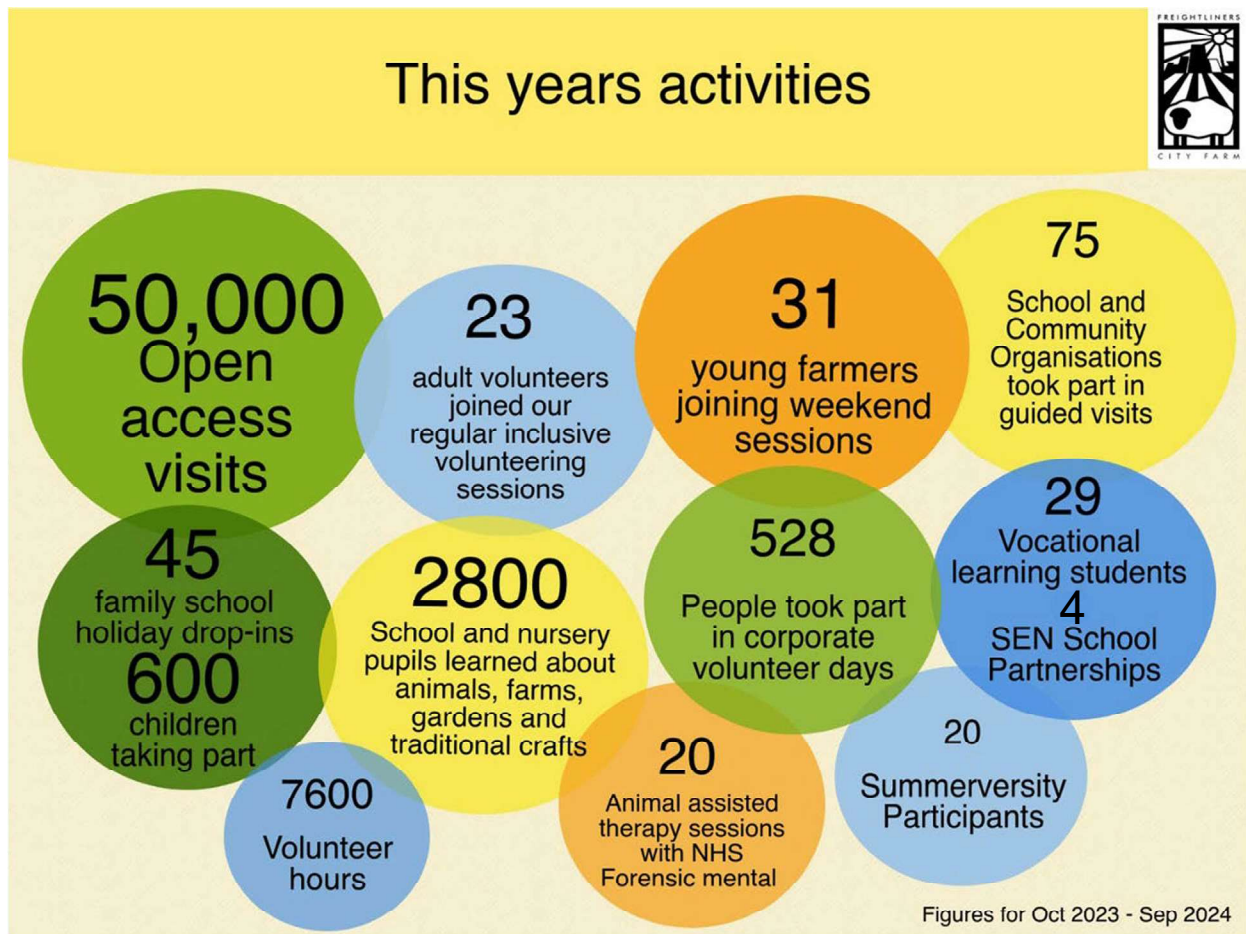
ACHIEVEMENTS AND PERFORMANCE

Charitable activities

Dealing with tough financial challenges whilst striving to meet the significant needs in our farm and wider community and securing funds for our continuing survival for the short and medium term was the top priority for 2023-24. Funding from Islington Council provided financial stability and we were then able to work on building further opportunities for income generation and service delivery.

Visitor numbers and demand for participation in activities, education programmes and volunteering continued to grow and the farm was able to provide an active, attractive and exciting green space with farm animals, wildlife and productive gardens for the local community. This year we rebuilt the productive garden using timber from the hedgerows and recycled fencing. We were awarded gold and outstanding from RHS London in Bloom in 2024.

People from across the community benefited from new experiences; skills development; gaining knowledge, qualifications and work experience and accessing the benefits of being outdoors and in contact with people, animals and nature for their health and wellbeing.



Freightliners Farm Limited

Report of the Trustees for the Year Ended 30 September 2024

Access to Greenspace nature and the outdoors

*It's so wonderful here it feels so calm, the children can explore, do so many things and have freedom'
Grandparent visiting with family*

The Farm provided an essential and unique green space for the local community, providing a wide range of educational and recreational opportunities enjoyed by people of all backgrounds and ages. Through targeted sessions, we engaged with isolated individuals, including families on low incomes or under stress, people with disabilities, and people with mental health problems. We collaborated with organisations including NHS Forensic Mental Health Services, Harington Scheme, Mencap, London City Farms and Community Gardens, NOVA New Opportunities, Solace Women's Aid, Targeted Youth Services, Bright Start Islington, and Action for Autism. The sessions facilitated vulnerable and in need people to access the benefits of being outdoors, taking part in creative, nature, and community-based activities.

We hosted guided visits for groups from 75 schools and community organisations with 2800 children participating in farm tours and activities such as candle making, felt making, and planting seeds, bulbs, or cuttings. School visits provided children and families with real life learning about animals, farms, nature and food growing. They also introduced the farm to local families who would not otherwise have discovered the farm and its free and open access services. Children and families had new experiences and opportunities to learn together.

Children and young people's involvement

During the year with the support of London Borough of Islington, Big Give's Green Match Fund and Kusuma Trust the farm offered a full programme of family activities with sessions each day of the school holidays. Four local SEN schools and a primary school have utilised the farm as a space for their pupils to spend time gaining skills and benefiting from contact with the outdoors and nature.

Our regular young farmers programme has expanded and now provides 6 sessions a week as well as individually tailored placements for young people to gain skills and experience in farming, animal care and community work and through the year 31 young people took part on a regular basis. The programme has been particularly important in supporting young people who have struggled with return to school or college after the pandemic with many experiencing anxieties and remaining home schooled or having difficulty with work placement requirements. The farm is a supportive environment where young people who are isolated can engage with others and contribute to their community.

We ran two heavily subscribed week long summerversity courses in partnership with Isledon Arts. The courses were a great way of introducing more Islington Young people to the farm community and provided a good introduction to animal care and land based skills.

'I loved last week it was great seeing the young people go from quiet, not looking at anyone and not wanting to talk to chatting away together, doing the farm stuff confidently and overcoming their fears of bugs and dirt and knowing that you'd helped' Islington Young Farmer now Sessional Staff Member

This year young people from our programmes have moved on to study veterinary medicine and nursing, animals care and management and agriculture at college and university.

'Without Freightliners I would never have got to study here at Writtle College, ARU out in the countryside doing a degree course that I love, learning about and working with animals. It's hard work but it's great'

Freightliners Farm Limited

Report of the Trustees for the Year Ended 30 September 2024

Inclusive volunteering and farming activities

The Farm facilitated the active participation of a diverse community of people in the maintenance, development and delivery of a city farm. Farm staff provide training, management, and support to 54 regular volunteers (including 31 young people, 6 people over 60, and 19 people with disabilities or long-term health or mental health problems), 528 people from local businesses and 5 weekly school and community group sessions. The monthly drop-in adult evening volunteering session is regularly attended enabling more local people to volunteer, get together and contribute to the space at a time that suits their way of life.

We also facilitated vocational training and work experience placements for young people and adults, with 8 young people on school block placements, 3 students on Veterinary College Animal Husbandry Placements, and others using volunteering for college work placement hours.

Volunteers and staff celebrated the 50th anniversary of the farm with a summer celebration.

Site developments and improvement

The farm site and gardens were awarded outstanding for the RHS It's Your Neighbourhood Award and Gold for the London In Bloom Community Garden Category.

'We love the farm and have been coming for years... There has been so much done to make the farm space better recently it's so green like visiting a show garden centre. You can see all the different plants and see what grows and have a lovely walk around.' Local adults visiting on an afternoon walk

528 people from local companies contributed 3200 hours to help with maintaining the site, gardens, and animal accommodation, installing new fencing, assisting with hedgerow maintenance, rebuilding the vegetable garden and supporting the maintenance of a safe public open farm.

Rare breeds and other animals

As ever the most popular educational and therapeutic sessions are based around the farm animals. The animals are empathetic and non-judgemental companions who provide comfort and reassurance to many people. Visitors and volunteers are able to learn skills in animal care and husbandry which would not otherwise be available to city people and to develop a practical understanding of animal welfare and conservation.

We welcomed our new Portland breeding ewes and are looking forwards to contributing to the breed societies efforts to maintain the national flock with lambs of our own in the coming years.

Drop-in learning sessions featured creative activities raising awareness about the wild animals on the farm including invertebrates, mammals, birds and amphibians and creating and conserving habitats for them. We worked with the RSPB to provide local people with information about conservation, visiting their reserves locally and membership.

Fundraising and social enterprise

We delivered more corporate team volunteer days than ever this year connecting people working in the corporate world with their local community, providing volunteer labour and increased revenue from supporting businesses and associated giving through platforms like Benevity. Revenue generated through team days has close to doubled and we are working to continue the growth in this activity in future years.

Freightliners Farm Limited

Report of the Trustees for the Year Ended 30 September 2024

The farm maintained a full school visits and commissioned SEN education provision programme meeting demand and providing a slowly growing income contributing to the delivery of the farm education services.

We were very pleased with the results of our first Big Give Green Match fundraising appeal which ran in April and generated £5000 in public donations matched by the Big Give and with gift aid added to total £12000 in support of nature and greening activities on the farm including family activities and the installation of a self-guided nature trail.

'This match funding is great it feels good that donating £10 is worth £20 to the farm it really encourages you to do it rather than plan to do it'

The match funding was popular with visitors encouraging them to donate and we are seeking to build on this with future campaigns either through the Big Give Programmes or with the support of some regular local donors. Our 50th anniversary fundraiser also helped raise the profile of our funding requirements amongst local people bringing in a number of donations and much support.

We would like to thank everyone who has supported the farm this year with donations, fundraising efforts and spreading the word about our appeals without this support the farm would not exist or be able to provide a much needed green space for the community.

FINANCIAL REVIEW

Financial position

The Statement of Financial Activities shows total income resources of £206,519 (2023: £196,099) whilst total outgoing resources of £205,558 (2023: £210,033) which resulted to a surplus of £961. (2023: Deficit - £13,934).

Fund balances at the year end stood at £117,738 (2023: £116,777) of which £26,165 (2023: £24,755) was unrestricted and £91,573 (2023: £92,022) was restricted.

Reserves policy

The Management Committee has established a policy whereby the restricted reserves equate to the net book value of certain company tangible fixed assets and that all other reserves are classified as unrestricted reserves. The Management Committee maintains the ambition to establish reserves of 3-6 months running costs, as recommended by the Charity Commission however the COVID-19 pandemic and its aftermath has resulted in a temporary but significant depletion of reserves.

Availability and adequacy of assets of each of the funds

The Management Committee is satisfied that the charity's assets in each fund are available and adequate to fulfill its obligations in respect of each fund.

FUTURE PLANS AND DEVELOPMENTS

Over the coming year we know that we will continue to need the support of our partners, service commissioners, local community, donors and supporters as funds remain extremely tight. The farm staff, volunteers and trustees remain determined to ensure that Freightliners City Farm provide a safe and welcoming green space for everyone for the next 50 years and to be innovative and efficient in our approach to securing the resources needed to meet the needs in our local and wider community.

STRUCTURE, GOVERNANCE AND MANAGEMENT

Nature of the Governing Document and constitution of the charity

The charity is controlled by its governing document, a deed of trust, and constitutes a limited company, limited by guarantee, as defined by the Companies Act 2006.

Freightliners Farm Limited

Report of the Trustees for the Year Ended 30 September 2024

The charity is controlled by its governing document, a deed of trust, and constitutes a limited company, limited by guarantee, as defined by the Companies Act 2006.

The organisation is a charitable company limited by guarantee, incorporated on 14th August 1992. The company was established under a Memorandum of Association which established the objects and powers of the charitable company and is governed under its Articles of Association. In the event of the company being wound up, each member is required to contribute an amount not exceeding £1.

The organisational structure of the charity and how decisions are made.

Freightliners Farm Limited has a Management Committee that meets at least five times a year and is responsible for the strategic direction and policy of the charity. The Management Committee met bi-monthly (either on the farm or using remote video conferencing) to provide additional oversight and guidance considering financial pressures significantly impacting the farm's operations. At present, the Committee has five members from a variety of professional backgrounds relevant to the work of the charity, including people from the local area.

The major risks to which the charity is exposed and reviews and systems mitigate

The trustees have a duty to identify and review the risks to which the charity is exposed and to ensure appropriate controls are in place to provide reasonable assurance against fraud and error.

The Management Committee has conducted its own review of the major risks to which the charity is exposed, and systems have been established to mitigate those risks. Significant external risks to funding have led to the development of a strategic plan, which will allow for the diversification of funding and activities. Internal risks are minimized by the implementation of procedures for authorization of all transactions and projects, ensuring consistent quality of delivery for all operational aspects of the charitable company. These procedures are periodically reviewed to ensure that they continue to meet the needs of the charity.

REFERENCE AND ADMINISTRATIVE DETAILS

Registered Company number

02740034 (England and Wales)

Registered Charity number

1014216

Registered office

Sheringham Road
N7 8PF

Trustees

O.S Robinson

M.Rowe

A. Weatherhead

Thomas N Bailly - Appointed on 24th July 2025

Laura Mackennon - Appointed on 3rd October 2024

S. Victoria Forrest - Resigned on 31st December 2024

Pete Macintyre - Resigned on 31st January 2024

Company Secretary:

E McAllister

Chief Executive Officer:

E McAllister

Freightliners Farm Limited

Report of the Trustees
for the Year Ended 30 September 2024

REFERENCE AND ADMINISTRATIVE DETAILS

Independent Examiner

A. Patel BA(Hons) FCA BFP
Prestons & Jacksons Partnership LLP
364 - 368 Cranbrook Road
Ilford
Essex
IG2 6HY

This report has been prepared in accordance with the special provisions of Part 15 of the Companies Act 2006 relating to small companies.

Approved by order of the board of trustees on 25th September 2025 and signed on its behalf by:



Mark Rowe
Trustee / Company Director



Thomas Bailly
Trustee / Company Director

Independent Examiner's Report to the Trustees of
Freightliners Farm Limited

Independent examiner's report to the trustees of Freightliners Farm Limited ('the Company')

I report to the charity trustees on my examination of the accounts of the Company for the year ended 30 September 2024.

Responsibilities and basis of report

As the charity's trustees of the Company (and also its directors for the purposes of company law) you are responsible for the preparation of the accounts in accordance with the requirements of the Companies Act 2006 ('the 2006 Act').

Having satisfied myself that the accounts of the Company are not required to be audited under Part 16 of the 2006 Act and are eligible for independent examination, I report in respect of my examination of your charity's accounts as carried out under Section 145 of the Charities Act 2011 ('the 2011 Act'). In carrying out my examination I have followed the Directions given by the Charity Commission under Section 145(5) (b) of the 2011 Act.

Independent examiner's statement

I have completed my examination. I confirm that no matters have come to my attention in connection with the examination giving me cause to believe:

1. accounting records were not kept in respect of the Company as required by Section 386 of the 2006 Act; or
2. the accounts do not accord with those records; or
3. the accounts do not comply with the accounting requirements of Section 396 of the 2006 Act other than any requirement that the accounts give a true and fair view which is not a matter considered as part of an independent examination; or
4. the accounts have not been prepared in accordance with the methods and principles of the Statement of Recommended Practice for accounting and reporting by charities (applicable to charities preparing their accounts in accordance with the Financial Reporting Standard applicable in the UK and Republic of Ireland (FRS 102)).

I have no concerns and have come across no other matters in connection with the examination to which attention should be drawn in this report in order to enable a proper understanding of the accounts to be reached.

A. PATEL

A. Patel BA(Hons) FCA BFP

Prestons & Jacksons Partnership LLP
364 - 368 Cranbrook Road
Ilford
Essex
IG2 6HY

Date: 26/09/2025

Freightliners Farm Limited

Statement of Financial Activities
(Incorporating an Income and Expenditure Account)
for the Year Ended 30 September 2024

	Notes	Unrestricted fund £	Restricted fund £	30.9.24 Total funds £	30.9.23 Total funds £
INCOME AND ENDOWMENTS FROM					
Grants and Donations	2	81,532	41,947	123,479	114,934
Charitable activities					
Charitable Activities	4	83,013	-	83,013	81,149
Investment income	3	<u>27</u>	<u>-</u>	<u>27</u>	<u>16</u>
Total		<u>164,572</u>	<u>41,947</u>	<u>206,519</u>	<u>196,099</u>
EXPENDITURE ON					
Raising funds	5	270	-	270	624
Charitable activities					
Community Support	6	64,629	8,439	73,068	72,065
Education		45,493	10,981	56,474	59,954
Environment		30,557	12,240	42,797	43,094
City farming and visitor services		<u>23,834</u>	<u>9,115</u>	<u>32,949</u>	<u>34,296</u>
Total		<u>164,783</u>	<u>40,775</u>	<u>205,558</u>	<u>210,033</u>
NET INCOME/(EXPENDITURE)					
Transfers between funds	17	(211)	1,172	961	(13,934)
		<u>1,621</u>	<u>(1,621)</u>	<u>-</u>	<u>-</u>
Net movement in funds		1,410	(449)	961	(13,934)
RECONCILIATION OF FUNDS					
Total funds brought forward		24,755	92,022	116,777	130,711
		<u> </u>	<u> </u>	<u> </u>	<u> </u>
TOTAL FUNDS CARRIED FORWARD		<u>26,165</u>	<u>91,573</u>	<u>117,738</u>	<u>116,777</u>

The notes form part of these financial statements

Freightliners Farm Limited

Balance Sheet
30 September 2024

	Notes	30.9.24 £	30.9.23 £
FIXED ASSETS			
Tangible assets	13	77,924	79,549
CURRENT ASSETS			
Debtors	14	55,943	32,598
Cash at bank		<u>15,368</u>	<u>23,549</u>
		71,311	56,147
CREDITORS			
Amounts falling due within one year	15	(31,497)	(18,919)
		<u>39,814</u>	<u>37,228</u>
NET CURRENT ASSETS			
		<u>117,738</u>	<u>116,777</u>
TOTAL ASSETS LESS CURRENT LIABILITIES			
		<u>117,738</u>	<u>116,777</u>
NET ASSETS		<u>117,738</u>	<u>116,777</u>
FUNDS	17		
Unrestricted funds:			
General fund		26,163	24,755
Restricted funds:			
Restricted Funds		<u>91,575</u>	<u>92,022</u>
TOTAL FUNDS		<u>117,738</u>	<u>116,777</u>

The charitable company is entitled to exemption from audit under Section 477 of the Companies Act 2006 for the year ended 30 September 2024.

The members have not required the company to obtain an audit of its financial statements for the year ended 30 September 2024 in accordance with Section 476 of the Companies Act 2006.

The trustees acknowledge their responsibilities for

- (a) ensuring that the charitable company keeps accounting records that comply with Sections 386 and 387 of the Companies Act 2006 and
- (b) preparing financial statements which give a true and fair view of the state of affairs of the charitable company as at the end of each financial year and of its surplus or deficit for each financial year in accordance with the requirements of Sections 394 and 395 and which otherwise comply with the requirements of the Companies Act 2006 relating to financial statements, so far as applicable to the charitable company.

The notes form part of these financial statements

Freightliners Farm Limited

Balance Sheet - continued
30 September 2024

These financial statements have been prepared in accordance with the provisions applicable to charitable companies subject to the small company's regime.

The financial statements were approved by the Board of Trustees and authorised for issue on 26th September 2025 and were signed on its behalf by:



Mark Rowe
Trustee / Company Director



Thomas Bailly
Trustee / Company Director

The notes form part of these financial statements

1. ACCOUNTING POLICIES

Basis of preparing the financial statements

The financial statements of the charitable company, which is a public benefit entity under FRS 102, have been prepared in accordance with the Charities SORP (FRS 102) 'Accounting and Reporting by Charities: Statement of Recommended Practice applicable to charities preparing their accounts in accordance with the Financial Reporting Standard applicable in the UK and Republic of Ireland (FRS 102) (effective 1 January 2019)', Financial Reporting Standard 102 'The Financial Reporting Standard applicable in the UK and Republic of Ireland' and the Companies Act 2006. The financial statements have been prepared under the historical cost convention.

Going Concern

The board of directors and management confirmed that they have secured sufficient fundings for the next foreseeable future. In addition, the company has guaranteed financial support from local communities, donors and Islington councils.

As a result of this, the accounts have been prepared on a going concern basis.

Income

All income is recognised in the Statement of Financial Activities once the charity has entitlement to the funds, it is probable that the income will be received and the amount can be measured reliably.

Voluntary income is received by way of grants, donations and gifts and is included in full in the Statement of Financial Activities when receivable. Grants, where entitlement is not conditional on the delivery of a specific performance by the charity, are recognised when the charity becomes unconditionally entitled to the grant.

Donated services and facilities are included at the value to the charity where this can be quantified. The value of services provided by volunteers has not been included in these accounts.

Investment income is included when receivable.

Incoming resources from charitable trading activities are accounted for when earned.

Incoming resources from grants, where related to performance and specific deliverables, are accounted for as the charity earns the right to consideration by its performance.

Expenditure and irrecoverable vat

Liabilities are recognised as expenditure as soon as there is a legal or constructive obligation committing the charity to that expenditure, it is probable that a transfer of economic benefits will be required in settlement and the amount of the obligation can be measured reliably. Expenditure is accounted for on an accruals basis and has been classified under headings that aggregate all cost related to the category. Where costs cannot be directly attributed to particular headings they have been allocated to activities on a basis consistent with the use of resources.

Expenditure is recognised on an accrual basis as a liability is incurred. Expenditure includes any VAT which cannot be fully recovered, and is reported as part of the expenditure to which it relates:

Costs of generating funds comprise the costs associated with attracting voluntary income and the costs of trading for fundraising purposes including the charity's shop.

1. ACCOUNTING POLICIES - continued

Expenditure and irrecoverable vat

Charitable expenditure comprises those costs incurred by the charity in the delivery of its activities and services for its beneficiaries. It includes both costs that can be allocated directly to such activities and those costs of an indirect nature necessary to support them.

Governance costs include those costs associated with meeting the constitutional and statutory requirements of the charity and include the audit fees and costs linked to the strategic management of the charity.

All costs are allocated between the expenditure categories of the SoFA on a basis designed to reflect the use of the resource. Costs relating to a particular activity are allocated directly, others are apportioned on an appropriate basis e.g. floor areas, per capita or estimated usage as set out in the notes to the accounts.

Tangible fixed assets

Depreciation is provided at the following annual rates in order to write off each asset over its estimated useful life.

Short leasehold	- 2% on cost
Improvements to property	- 15% on cost
Fixtures and fittings	- at varying rates on cost

Tangible fixed assets are stated at historical cost less accumulated depreciation and any accumulated impairment losses. Historical cost includes expenditure that is directly attributable to bringing the asset to the location and condition necessary for it to be capable of operating in the manner intended by management.

Taxation

The charity is exempt from corporation tax on its charitable activities.

Fund accounting

Unrestricted funds can be used in accordance with the charitable objectives at the discretion of the trustees.

Restricted funds can only be used for particular restricted purposes within the objects of the charity. Restrictions arise when specified by the donor or when funds are raised for particular restricted purposes.

Designated funds are Unrestricted funds earmarked by the Management Committee for particular purposes.

Further explanation of the nature and purpose of each fund is included in the notes to the financial statements.

Debtors

Basic financial assets, including trade and other debtors, are initially recognised at transaction price, unless the arrangement constitutes a financing transaction, where the transaction is measured at the present value of the future receipts discounted at a market rate of interest. Such assets are subsequently carried at amortised cost using the effective interest method, less any impairment.

1. ACCOUNTING POLICIES - continued

Cash and Cash Equivalents

Cash and cash equivalents are represented by cash in hand, deposits held at call with financial institutions, and other short-term highly liquid investments that mature in no more than three months from the date of acquisition and that are readily convertible to known amounts of cash with insignificant risk of change in value.

Creditors

Basic financial liabilities, including trade and other creditors, loans from third parties and loans from related parties, are initially recognised at transaction price, unless the arrangement constitutes a financing transaction, where the debt instrument is measured at the present value of the future payments discounted at a market rate of interest. Such instruments are subsequently carried at amortised cost using the effective interest method, less and impairment.

Pension costs

The charity operates a defined contribution pension scheme. Contributions payable to the charity's pension scheme are charged to the Statement of Financial Activities in the period to which they relate.

2. GRANTS AND DONATIONS

	30.9.24	30.9.23
	£	£
Gift aid	5,500	6,500
Grants and Donations	<u>117,979</u>	<u>108,434</u>
	<u>123,479</u>	<u>114,934</u>

Freightliners Farm Limited

Notes to the Financial Statements - continued for the Year Ended 30 September 2024

2. GRANTS AND DONATIONS - continued

Grants received, included in the above, are as follows:

	30.9.24	30.9.23
	£	£
Donations under £1,000	4,086	8,035
Donations through Local Giving Platform	4,166	-
Donations through Benivity Charitable Giving	2149	-
LB Islington Green Space and Leisure Division	32,000	32,000
J&M Douglas	5,000	5,000
L Matlock	10,000	10,000
LB Islington Children's Services	9,831	9,597
The Co-op	2,289	-
Waitrose Community Matters	-	1,500
Robert McCallister	-	5,224
London Community Energy Fund	-	4,610
Hilden Charitable Trust	-	1,500
Kusuma Trust	-	25,000
Anonymous	6,201	5,968
LB - Islington Community Investment Levy	20,000	-
The Beryl Evetts and Robert Luff Animal Welfare Trust	10,000	-
The Big Give - Green Match Fund	10,957	-
London Farm and Gardens	<u>1,300</u>	<u>-</u>
	<u>117,979</u>	<u>108,434</u>

3. INVESTMENT INCOME

	30.9.24	30.9.23
	£	£
Deposit account interest	<u>27</u>	<u>16</u>

Freightliners Farm Limited

Notes to the Financial Statements - continued
for the Year Ended 30 September 2024

4. INCOME FROM CHARITABLE ACTIVITIES

		30.9.24	30.9.23
		£	£
Income from provision of goods and services	Activity Charitable Activities	<u>83,013</u>	<u>81,149</u>

Grants received, included in the above, are as follows:

		30.9.24	30.9.23
		£	£
CAFE Income		-	1,477
Education Income		20,036	18,836
Other Farm Income		32,372	30,774
LBI Islington (SEND)		-	750
Isledon Arts		5000	5,000
Riverside School		-	7,032
Southover School Partnership		17040	17,280
North London Forensic Mental Health Service		1600	-
LBI Haringey (SEND)		<u>6965</u>	-
		<u>83,013</u>	<u>81,149</u>

5. RAISING FUNDS

Raising donations and legacies

		30.9.24	30.9.23
		£	£
Fundraising Costs		<u>270</u>	<u>624</u>

6. CHARITABLE ACTIVITIES COSTS

	Direct Costs £	Support costs (see note 7) £	Totals £
Community Support	52,972	20,096	73,068
Education	41,769	14,705	56,474
Environment	31,198	11,599	42,797
City farming and visitor services	<u>24,346</u>	<u>8,603</u>	<u>32,949</u>
	<u>150,285</u>	<u>55,003</u>	<u>205,288</u>

Freightliners Farm Limited

Notes to the Financial Statements - continued
for the Year Ended 30 September 2024

7. SUPPORT COSTS

	Management	Governance costs	Totals
	£	£	£
Community Support	20,096	-	20,096
Education	14,705	-	14,705
Environment	11,599	-	11,599
City farming and visitor services	<u>5,903</u>	<u>2,700</u>	<u>8,603</u>
	<u>52,303</u>	<u>2,700</u>	<u>55,003</u>

8. NET INCOME/(EXPENDITURE)

Net income/(expenditure) is stated after charging/(crediting):

	30.9.24	30.9.23
	£	£
Depreciation - owned assets	6,323	5,603
Independent Examiners Fees	<u>2,700</u>	<u>2,700</u>

9. TRUSTEES' REMUNERATION AND BENEFITS

There were no trustees' remuneration or other benefits for the year ended 30 September 2024 nor for the year ended 30 September 2023.

Trustees' expenses

There were no trustees' expenses paid for the year ended 30 September 2024 nor for the year ended 30 September 2023.

10. STAFF COSTS

	30.9.24	30.9.23
	£	£
Wages and salaries	<u>151,856</u>	<u>145,224</u>
	<u>151,856</u>	<u>145,224</u>

The average monthly number of employees during the year was as follows:

	30.9.24	30.9.23
Engaged on Charitable Activities	4	4
Engaged on administration and management	<u>1</u>	<u>1</u>
	<u>5</u>	<u>5</u>

No employees received emoluments in excess of £60,000.

Notes to the Financial Statements - continued
for the Year Ended 30 September 2024

11. COMPARATIVES FOR THE STATEMENT OF FINANCIAL ACTIVITIES FOR 30 SEPT 2023

	Unrestricted fund £	Restricted fund £	Total funds £
INCOME AND ENDOWMENTS FROM			
Grants and Donations	69,937	44,997	114,934
Charitable activities			
Charitable Activities	81,149	-	81,149
Investment income	<u>16</u>	<u>-</u>	<u>16</u>
Total	<u>151,102</u>	<u>44,997</u>	<u>196,099</u>
EXPENDITURE ON			
Raising funds	624	-	624
Charitable activities			
Community Support	58,472	13,593	72,065
Education	53,580	6,374	59,954
Environment	35,990	7,104	43,094
City farming and visitor services	<u>28,935</u>	<u>5,361</u>	<u>34,296</u>
Total	<u>177,601</u>	<u>32,432</u>	<u>210,033</u>
NET INCOME/(EXPENDITURE)	(26,499)	12,565	(13,934)
Transfers between funds	<u>2,140</u>	<u>(2,140)</u>	<u>-</u>
Net movement in funds	(24,359)	10,425	(13,934)
RECONCILIATION OF FUNDS			
Total funds brought forward	49,114	81,597	130,711
	<u> </u>	<u> </u>	<u> </u>
TOTAL FUNDS CARRIED FORWARD	<u>24,755</u>	<u>92,022</u>	<u>116,777</u>

Freightliners Farm Limited

Notes to the Financial Statements - continued
for the Year Ended 30 September 2024

12. KEY MANAGEMENT PERSONNEL

Key Management Personnel is considered to be the CEO and the Board of Trustees. Her gross remuneration was £34,511 for the year ended 30th September 2024. (30th September 2023 - £34,217)

13. TANGIBLE FIXED ASSETS

	Short leasehold £	Improvements to property £	Fixtures and fittings £	Totals £
COST				
At 1 October 2023	95,922	3,428	70,694	170,044
Additions	<u>-</u>	<u>4,698</u>	<u>-</u>	<u>4,698</u>
At 30 September 2024	<u>95,922</u>	<u>8,126</u>	<u>70,694</u>	<u>174,742</u>
DEPRECIATION				
At 1 October 2023	48,506	1,028	40,961	90,495
Charge for year	<u>1,918</u>	<u>1,232</u>	<u>3,173</u>	<u>6,323</u>
At 30 September 2024	<u>50,424</u>	<u>2,260</u>	<u>44,134</u>	<u>96,818</u>
NET BOOK VALUE				
At 30 September 2024	<u>45,498</u>	<u>5,866</u>	<u>26,560</u>	<u>77,924</u>
At 30 September 2023	<u>47,416</u>	<u>2,400</u>	<u>29,733</u>	<u>79,549</u>

14. DEBTORS: AMOUNTS FALLING DUE WITHIN ONE YEAR

	30.9.24	30.9.23
	£	£
Trade debtors	35,804	26,098
Other debtors	179	-
Prepayments and accrued income	<u>19,960</u>	<u>6,500</u>
	<u>55,943</u>	<u>32,598</u>

Freightliners Farm Limited

Notes to the Financial Statements - continued
for the Year Ended 30 September 2024

15. CREDITORS: AMOUNTS FALLING DUE WITHIN ONE YEAR

	30.9.24	30.9.23
	£	£
Trade creditors	13,873	6,671
Social security and other taxes	11,793	8,919
Other creditors	2,831	629
Accrued expenses	<u>3,000</u>	<u>2,700</u>
	<u>31,497</u>	<u>18,919</u>

16. ANALYSIS OF NET ASSETS BETWEEN FUNDS

	Unrestricted	Restricted	30.9.24	30.9.23
	fund	fund	Total	Total
	£	£	£	£
Fixed assets	32,426	45,498	77,924	79,549
Current assets	25,234	46,077	71,311	56,147
Current liabilities	<u>(31,497)</u>	<u>-</u>	<u>(31,497)</u>	<u>(18,919)</u>
	<u>26,163</u>	<u>91,575</u>	<u>117,738</u>	<u>116,777</u>

17. MOVEMENT IN FUNDS

Analysis of Restricted Reserves carried forward as at 30th September 2024

	30.9.2024	30.9.2023
	£	£
Kusuma Trust	-	12,496
London Community Energy Fund	-	(6)
LBI Children Services	-	3
Social Farms and Gardens Hilden Charitable Trust Summer Activity Fund	-	(20)
LBI Community Investment Levy	9,029	-
The Big Give - Green Match Fund	4,620	-
	<hr/>	<hr/>
Total Revenue Restricted Funds	<u>13,649</u>	<u>12,473</u>
	<hr/>	<hr/>
Fixed Asset Fund (See note 13)	<u>77,924</u>	<u>79,549</u>
	<hr/>	<hr/>
Restricted Funds carried forward - 30th Sept	91,573	92,022

18. RELATED PARTY DISCLOSURES

During the year, the Farm had financial transactions of £1,300 (30th September 2023: £3,100) with London City Farms and Community Gardens Association, whose trustee is also the Chief Executive Officer of the Farm.

Freightliners Farm Limited

Detailed Statement of Financial Activities for the Year Ended 30 September 2024

	30.9.24 £	30.9.23 £
INCOME AND ENDOWMENTS		
Grants and Donations		
Gift aid	5,500	6,500
Grants and Donations	<u>117,979</u>	<u>108,434</u>
	123,479	114,934
Investment income		
Deposit account interest	27	16
Charitable activities		
Income from provision of goods and services	<u>83,013</u>	<u>81,149</u>
Total incoming resources	206,519	196,099
EXPENDITURE		
Raising donations and legacies		
Fundraising Costs	270	624
Charitable activities		
Salaries	134,241	127,781
COG for Trading	1,215	2,357
Premises Costs	13,044	16,031
General Admin	726	326
Other Support Costs	<u>1,059</u>	<u>1,660</u>
	150,285	148,155
Support costs		
Management		
Wages	17,615	17,443
Premises Costs	345	452
Insurance	735	810
Professional Fees	4,761	3,323
Other Support Costs	<u>28,847</u>	<u>36,526</u>
	52,303	58,554
Governance costs		
Independent Examiners Fees	2,700	2,700

This page does not form part of the statutory financial statements

Freightliners Farm Limited

Detailed Statement of Financial Activities
for the Year Ended 30 September 2024

	30.9.24	30.9.23
	<u>£</u>	<u>£</u>
Total resources expended	<u>205,558</u>	<u>210,033</u>
Net income/(expenditure)	<u>961</u>	<u>(13,934)</u>

This page does not form part of the statutory financial statements

FREIGHTLINERS FARM LIMITED

England & Wales - Charity number 1014216

Accounts

REGISTERED COMPANY NUMBER: 02740034 (England and Wales)
REGISTERED CHARITY NUMBER: 1014216

**REPORT OF THE TRUSTEES AND
FINANCIAL STATEMENTS FOR THE YEAR ENDED 30 SEPTEMBER 2023
FOR
FREIGHTLINERS FARM LIMITED
(A COMPANY LIMITED BY GUARANTEE)**

Prestons & Jacksons Partnership LLP
364 - 368 Cranbrook Road
Ilford
Essex
IG2 6HY

FREIGHTLINERS FARM LIMITED

CONTENTS OF THE FINANCIAL STATEMENTS FOR THE YEAR ENDED 30 SEPTEMBER 2023

	Page
Report of the Trustees	1 to 8
Independent Examiner's Report	9
Statement of Financial Activities	10
Balance Sheet	11 to 12
Notes to the Financial Statements	13 to 22
Detailed Statement of Financial Activities	23 to 24

FREIGHTLINERS FARM LIMITED

**REPORT OF THE TRUSTEES
FOR THE YEAR ENDED 30 SEPTEMBER 2023**

The trustees who are also directors of the charity for the purposes of the Companies Act 2006, present their report with the financial statements of the charity for the year ended 30 September 2023. The trustees have adopted the provisions of Accounting and Reporting by Charities: Statement of Recommended Practice applicable to charities preparing their accounts in accordance with the Financial Reporting Standard applicable in the UK and Republic of Ireland (FRS 102) (effective 1 January 2019).

FREIGHTLINERS FARM LIMITED

REPORT OF THE TRUSTEES FOR THE YEAR ENDED 30 SEPTEMBER 2023

OBJECTIVES AND ACTIVITIES

Objectives and aims

A summary of the objects of the charity as set out in its governing document

The objects of the charity are:

- Improve quality of life particularly for those most in need;
- Promote community participation, education and skills development;
- Promote caring, nurturing and respect for others, the natural and built environment and all living things within the London Boroughs of Islington, Hackney, Haringey, Camden and their environs.

The charity's aims including the changes or differences it seeks to make through its activities.

The charity aims to achieve the above objectives by means of:

- associating with the local authorities, voluntary organisations and inhabitants in a common effort to provide facilities in the interest of social welfare for recreation and other leisure time occupations;
- providing learning opportunities covering agriculture, horticulture, home crafts, country life, the natural environment and related subjects;
- educating people in the care and consideration for all animals particularly animals in need of care and protection. For these purposes to care for and exhibit animals in common agricultural and domestic use and rare breeds of farm animals so that the public will have a greater awareness of and appreciation for such animals;
- providing a rural type of outdoor environment in the inner city which enables urban people to access a little bit of the countryside; and
- demonstrating social, economic and environmental sustainability through modelling of practices, use of technology, fair access, enterprise and involvement.

In setting our objectives and planning our activities, the Trustees have given careful consideration to the Charity Commission's guidance on public benefit.

Summary of the main activities of the charity in relation to its objects

The diverse range of activities which are carried out by the Farm include project work, commissioned services, social enterprise and ongoing development work. In pursuit of its stated objectives, the charity's activities can be classified according to the aims of individual pieces of work as follows:

- Community support by providing facilities in the interest of social welfare for therapy, recreation and other leisure time occupations;
- Education by providing training and learning opportunities;
- Environmental awareness by providing facilities to improve appreciation, consideration and care for all animals and their habitats; and
- Social enterprise by providing unique opportunities for local people, developing educational food programmes, and supplying local goods and services in an accessible manner and at a reasonable cost.

Public Benefit

The Trustees confirm that they have complied with the duty in section 4 of the Charities Act 2006 to have due regard to public benefit guidance published by the Commission in determining the activities undertaken by the Charity.

FREIGHTLINERS FARM LIMITED

REPORT OF THE TRUSTEES FOR THE YEAR ENDED 30 SEPTEMBER 2023

ACHIEVEMENT AND PERFORMANCE

Charitable activities

2022-23 was a year with a packed full programme of activities and a once more bustling yet tranquil community green space as we returned to full open access visiting, volunteering and delivery of services following the end of the restrictions of the Covid-19 pandemic. The Farm hosted an estimated 40,000 visitors, including 4000 children visiting with school and nursery groups, reflecting the diversity of the local Islington community.

We supported 44 people to volunteer on a regular basis, including 15 young people, 5 people over 60, and 19 people with disabilities or long-term health or mental health problems. 60 young people participated in education, therapeutic and positive activities programmes with their schools, colleges or through the Islington Summersiversity Programme.

People from across the community benefited from new experiences; skills development; gaining knowledge, qualifications and work experience and accessing the benefits of being outdoors and in contact with people, animals and nature for their health and wellbeing.

Whilst our activities expanded to meet the increased need, our local community, volunteers and staff adjusted and worked towards recovery after the recent extremely challenging years and the farm faced a difficult financial period. The impact of inflationary rises, increasing competition for funding, and internal and external pressures of cost of operating reduced income generation and capacity during the year. In response to these financial pressures, an increase in support needs and demand for low and no cost services, the trustees have reached out to our partners and supporters to seek their assistance in meeting the challenges over the coming year and into the future.

Access to the outdoors, nature and play

The Farm continued to be an essential and unique green space for the local community, providing a wide range of educational and recreational opportunities enjoyed by people of all backgrounds and ages. Through targeted sessions, we engaged with isolated individuals, including families on low incomes or under stress, people with disabilities, and people with mental health problems. We collaborated with organisations such as NHS Forensic Mental Health Services, Harington Scheme, Mencap, London City Farms and Community Gardens, NOVA New Opportunities, Solace Women's Aid, Targeted Youth Services, Bright Start Islington, and Action for Autism. These sessions facilitated vulnerable and in need people to access the benefits of being outdoors, taking part in creative, nature, and community based activities.

We hosted guided school visits for 120 classes with 2730 pupils from schools and nursery groups, with activities such as candle making, felt making, and planting seeds, bulbs, or cuttings. School visits provided children and families with real life learning about animals, farms, nature and food growing. They also introduced the farm to local families who would not otherwise have discovered the farm and its free and open access services. Five local early years centres, an SEN school, and a hospital school also booked self-guided sessions, introducing children and families to the farm.

During the year with the support of the London Borough of Islington, Kusuma Trust, Social Farm's and gardens and the Hilden Charitable Trust we delivered a programme of free family activities targeted at children under 13, their families and carers. The farm delivered a total of 38 drop-in school holiday sessions over the all six school holidays.

This included:

- 5 winter arts and crafts drop-ins and HAF festive family fun days during the December break

FREIGHTLINERS FARM LIMITED

REPORT OF THE TRUSTEES FOR THE YEAR ENDED 30 SEPTEMBER 2023

- 27 seasonal free family drop-in sessions over the Spring and half term holidays, and an average of 15 children and 10 adults attended each session.

- 6 free family drop-in sessions a week for five weeks over the summer holidays. Activities ranged from meeting small animals to wildlife and plant activities, farm art, woodwork, and traditional farm crafts with more than 300 children attending at least one session and many attending more regularly.

Notably, the "Meet the animals" sessions were particularly popular, with one session attracting 40 children and 20 families.

Children and families had new experiences and opportunities to learn together. One parent noted, "This has been a lovely experience so much to learn for all of us." Children also enjoyed hands-on, active, and creative activities. A child exclaimed, "Thank you, I really liked making my caterpillar," while another said, "Look at my badge!" Parents and carers, especially families with experience of trauma or health issues and parents of children with disabilities, had support, time, and space to enjoy positive interactions with children. A parent shared, "We've had such a lovely day, we had chickens back home which she used to feed with me so it was nice to be able to do that together here."

Our partnership with Islington Council's holiday activities with food programme enabled us to provide additional access to farm activities for families in need including those with children on free school meals and children with disabilities. Funding enabled children and families to enjoy a healthy meal including special winter celebration lunches over the Christmas and New Year period and as part of the Summerversity programme. This partnership, along with collaboration with local adventure playgrounds and Bright Start Islington also taking part in the programme, ensured that families in need could access the farm and benefit from its educational and health-promoting activities whilst also assisting with the challenge of rising food costs for families on low incomes.

Children and young people's involvement

The involvement of children and young people is at the core of our mission and our youth programmes aim to engage young people in the day to day activity of the farm, its long term development and local social action and community participation. Our Summerversity and Launchpad Programmes were in high demand and booked out fast. They provided vocational training and work experience in animal care, gardening, environmental management, and community work for 24 young people.

The Young Farmers programme facilitated young people's involvement in the farm through regular volunteering and therapeutic learning placements and themed holiday activity sessions. Young Farmers gained skills in animal care, horticulture, and community work, together with transferable life and employment skills.

Regular hands on weekly therapeutic and learning sessions were attended by 27 pupils from three SEN schools and 60 pupils from Thornhill Primary School.

Inclusive volunteering and farming activities

The Farm facilitated the active participation of a diverse community of people in the maintenance, development and delivery of a city farm. Farm staff provide training, management, and support to 44 regular volunteers (including 15 young people, 5 people over 60, and 19 people with disabilities or long-term health or mental health problems), around 391 people from local businesses and 5 weekly school and community group sessions.

FREIGHTLINERS FARM LIMITED

REPORT OF THE TRUSTEES FOR THE YEAR ENDED 30 SEPTEMBER 2023

Our monthly drop-in adult evening volunteering session empowering more local people to volunteer, get together and contribute to the space continued to grow with 20 people attending over the year.

We also facilitated vocational training and work experience placements for young people and adults, with 6 young people on school block placements, 3 students on Veterinary College Animal Husbandry Placements, and others using volunteering for college work placement hours.

The farm held a number of events in recognition of its 50th anniversary, including a volunteer idea and photograph reminiscence session and a follow up 'Golden Gate' painting with volunteers and corporate team groups. A celebration general meeting and get together is planned for summer 2024.

Site developments and improvement

This year, we focused on maintaining and developing the farm site and gardens for visitors, receiving Outstanding for the RHS It's Your Neighbourhood Award and Gold for the London In Bloom Community Garden Category. We were also pleased to receive a grant from the London Community Energy Fund which enabled the farm to review and upgrade our renewable generation systems and establish a plan for future projects..

We welcomed 27 teams from local companies who helped with maintaining the site, gardens, and animal accommodation, installing new fencing, assisting with hedgerow maintenance and carrying out work on upgrades to the site to ensure compliance with new health and safety guidance for open farms.

Visitors have shared their appreciation for these improvements. A local resident and grandparent said, "The farm looks wonderful; it is so improved from what it was, so green and well-kept, it is such an important thing for the local community which is more lovely every time we come." Another visitor remarked, "I just wanted to give a little contribution; it's not much, but we really value being able to just drop by and have a little walk round each day."

Rare breeds and other animals

Freightliners Farm continues to keep a range of rare and traditional breeds of farm animals and to provide educational activities and information to the public about their conservation and role in conservation grazing, maintaining genetic diversity in livestock and other aspects of modern life. We provided an introduction to the care, welfare and understanding of needs of farm and pet animals for visitors and session participants through signage, guided meet the animals sessions and informal information sharing

For the second year we hosted Royal Veterinary College students for practical learning sessions enabling the students to learn about the role of city farms for communities, gain practical experience of advising clients and have some hands on animal time.

Our animal care learning programmes provided training and support for 27 young people to complete accredited animal care courses at appropriate levels.

Our drop-in learning sessions featured creative activities raising awareness about the wild animals on the farm including invertebrates, mammals, birds and amphibians and creating and conserving habitats for them. We worked with the RSPB to provide local people with information about conservation, visiting their reserves locally and membership.

Fundraising and social enterprise

FREIGHTLINERS FARM LIMITED

REPORT OF THE TRUSTEES FOR THE YEAR ENDED 30 SEPTEMBER 2023

During the year we increased the income generated through education service provision and corporate team involvement as the farm is an ever more popular place for people to learn and connect with others. Plant sales throughout the year continued to provide a steady income stream and in December we sold Christmas trees, which was a successful initiative contributing to our fundraising efforts. Additionally, individuals supported the farm by participating in running and swimming marathons, helping to raise significant funds and awareness for our cause. We are extremely grateful to our local and wider community for their time, effort and financial support which is so needed at this time.

The farm gained support to adjust to new and increasing needs following the Covid-19 pandemic and the cost of living/ operating crisis by an organisational grant from the Kusuma Trust enabling the provision of a full programme of farm activities. We secured small grants for our holiday scheme and summer activities programme. We have a long term valued partnership supporting delivery of services with the London Borough of Islington, Isledon Arts and Big Alliance and new and developing partnerships with BEH Mental Health Trust, Power Up North London and the Mayor's LCEF. Thanks to our partners and funders we are able to maintain and develop the farm space and target support to meet the need in our community.

Our ongoing fundraising efforts include seeking major grant funding from City Bridge Trust, Islington Council VCS, the National Lottery Community Fund.

FINANCIAL REVIEW

Financial position

The Statement of Financial Activities shows a deficit of £13,934 (2022: deficit £2,706).

Fund balances at the year end stood at £116,777 (2022: £130,711) of which £24,755 (2022: £49,114) was unrestricted and £92,022 (2022: £81,597) was restricted.

Reserves policy

The Management Committee has established a policy whereby the restricted reserves equate to the net book value of certain company tangible fixed assets and that all other reserves are classified as unrestricted reserves. The Management Committee maintains the ambition to establish reserves of 3-6 months running costs, as recommended by the Charity Commission however the COVID-19 pandemic and its aftermath has resulted in a temporary but significant depletion of reserves.

Availability and adequacy of assets of each of the funds

The Management Committee is satisfied that the charity's assets in each fund are available and adequate to fulfill its obligations in respect of each fund.

FREIGHTLINERS FARM LIMITED

REPORT OF THE TRUSTEES FOR THE YEAR ENDED 30 SEPTEMBER 2023

FUTURE PLANS AND DEVELOPMENTS

Recognising the current financial deficit and the urgent need to improve our financial position we have put robust plans in place. These include community fundraising, income generating strategies and a significant focus on grant fundraising. We are seeking funding to increase our outdoor and environmental education programmes to meet the increasing demand from schools and longer term funding for the management and maintenance of the farm as a biodiverse green space together with increased access to it. We recognise there is a need for more secure funding of these core activities to ensure that we are able to deliver the unique opportunities of an inner city farm for everyone, free at point of access, both as an inclusive open access space and through specialist targeted activities.

Looking ahead, we aim to expand our educational programmes further with additional alternative provision placements and further opportunities for SEND specialist schools. We will continue to work with Power Up North London and Joju solar to monitor and enhance our renewable energy generation capacity, including the development of ideas around a solar generating greenhouse and increasing solar generation area supporting the move to Net Zero. Furthermore, we aim to bring in a new breed of RBST vulnerable sheep and develop our wool processing and crafts as an additional income stream. During the coming financial year we will also launch the "50 Fabulous Fundraisers" campaign with a target of £50,000 to mark our 50th anniversary and secure financial stability for the future.

STRUCTURE, GOVERNANCE AND MANAGEMENT

Nature of the Governing Document and constitution of the charity

The charity is controlled by its governing document, a deed of trust, and constitutes a limited company, limited by guarantee, as defined by the Companies Act 2006.

The organisation is a charitable company limited by guarantee, incorporated on 14th August 1992. The company was established under a Memorandum of Association which established the objects and powers of the charitable company and is governed under its Articles of Association. In the event of the company being wound up, each member is required to contribute an amount not exceeding £1.

The organisational structure of the charity and how decisions are made.

Freightliners Farm Limited has a Management Committee that meets at least five times a year and is responsible for the strategic direction and policy of the charity. The Management Committee met bi-monthly (either on the farm or using remote video conferencing) to provide additional oversight and guidance considering financial pressures significantly impacting the farm's operations. At present, the Committee has five members from a variety of professional backgrounds relevant to the work of the charity, including people from the local area.

The major risks to which the charity is exposed and reviews and systems mitigate

The trustees have a duty to identify and review the risks to which the charity is exposed and to ensure appropriate controls are in place to provide reasonable assurance against fraud and error.

The Management Committee has conducted its own review of the major risks to which the charity is exposed, and systems have been established to mitigate those risks. Significant external risks to funding have led to the development of a strategic plan, which will allow for the diversification of funding and activities. Internal risks are minimised by the implementation of procedures for authorisation of all transactions and projects, ensuring consistent quality of delivery for all operational aspects of the charitable company. These procedures are periodically reviewed to ensure that they continue to meet the needs of the charity.

REFERENCE AND ADMINISTRATIVE DETAILS

Registered Company number

02740034 (England and Wales)

FREIGHTLINERS FARM LIMITED

**REPORT OF THE TRUSTEES
FOR THE YEAR ENDED 30 SEPTEMBER 2023**

Registered Charity number

1014216

Registered office

Sheringham Road
N7 8PF

Trustees

O.S Robinson

M.Rowe

P.MacIntyre - Resigned on 31st January 2024

A. Weatherhead

S. Victoria Forrest

Company Secretary:

E McAllister

Chief Executive Officer:

E McAllister

Independent Examiner

A. Patel BA(Hons) FCA BFP

Prestons & Jacksons Partnership LLP364 - 368 Cranbrook Road

Ilford

Essex

IG2 6HY

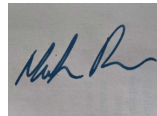
This report has been prepared in accordance with the special provisions of Part 15 of the Companies Act 2006 relating to small companies.

Approved by order of the board of trustees on 27th June 2024 and signed on its behalf by:



Adam Weatherhead

Trustee



Mark Rowe

Trustee

INDEPENDENT EXAMINER'S REPORT TO THE TRUSTEES OF FREIGHTLINERS FARM LIMITED

Independent examiner's report to the trustees of Freightliners Farm Limited ('the Company')

I report to the charity trustees on my examination of the accounts of the Company for the year ended 30 September 2023.

Responsibilities and basis of report

As the charity's trustees of the Company (and also its directors for the purposes of company law) you are responsible for the preparation of the accounts in accordance with the requirements of the Companies Act 2006 ('the 2006 Act').

Having satisfied myself that the accounts of the Company are not required to be audited under Part 16 of the 2006 Act and are eligible for independent examination, I report in respect of my examination of your charity's accounts as carried out under Section 145 of the Charities Act 2011 ('the 2011 Act'). In carrying out my examination I have followed the Directions given by the Charity Commission under Section 145(5) (b) of the 2011 Act.

Independent examiner's statement

I have completed my examination. I confirm that no matters have come to my attention in connection with the examination giving me cause to believe:

1. accounting records were not kept in respect of the Company as required by Section 386 of the 2006 Act; or
2. the accounts do not accord with those records; or
3. the accounts do not comply with the accounting requirements of Section 396 of the 2006 Act other than any requirement that the accounts give a true and fair view which is not a matter considered as part of an independent examination; or
4. the accounts have not been prepared in accordance with the methods and principles of the Statement of Recommended Practice for accounting and reporting by charities (applicable to charities preparing their accounts in accordance with the Financial Reporting Standard applicable in the UK and Republic of Ireland (FRS 102)).

I have no concerns and have come across no other matters in connection with the examination to which attention should be drawn in this report in order to enable a proper understanding of the accounts to be reached.

A. Patel BA(Hons) FCA BFP

Prestons & Jacksons Partnership LLP
364 - 368 Cranbrook Road
Ilford
Essex
IG2 6HY

Date: 27th June 2024
Date:

FREIGHTLINERS FARM LIMITED

**STATEMENT OF FINANCIAL ACTIVITIES
(INCORPORATING AN INCOME AND EXPENDITURE ACCOUNT)
FOR THE YEAR ENDED 30 SEPTEMBER 2023**

	Notes	Unrestricted fund £	Restricted fund £	30.9.23 Total funds £	30.9.22 Total funds £
INCOME AND ENDOWMENTS FROM					
Grants and Donations	2	69,937	44,997	114,934	169,803
Charitable activities	4				
Charitable Activities		81,149	-	81,149	62,316
Investment income	3	16	-	16	-
Total		151,102	44,997	196,099	232,119
 EXPENDITURE ON					
Raising funds	5	624	-	624	96
Charitable activities	6				
Community Support		58,472	13,593	72,065	84,795
Education		53,580	6,374	59,954	80,079
Environment		35,990	7,104	43,094	48,016
City farming and visitor services		28,935	5,361	34,296	21,839
Total		177,601	32,432	210,033	234,825
 NET INCOME/(EXPENDITURE)					
Transfers between funds	17	(26,499)	12,565	(13,934)	(2,706)
		2,140	(2,140)	-	-
Net movement in funds		(24,359)	10,425	(13,934)	(2,706)
 RECONCILIATION OF FUNDS					
Total funds brought forward		49,114	81,597	130,711	133,417
TOTAL FUNDS CARRIED FORWARD		24,755	92,022	116,777	130,711

The notes form part of these financial statements

FREIGHTLINERS FARM LIMITED

BALANCE SHEET 30 SEPTEMBER 2023

	Notes	30.9.23 £	30.9.22 £
FIXED ASSETS			
Tangible assets	13	79,549	79,596
CURRENT ASSETS			
Debtors	14	32,598	27,467
Cash at bank		23,549	37,006
		<u>56,147</u>	<u>64,473</u>
CREDITORS			
Amounts falling due within one year	15	(18,919)	(13,358)
		<u>37,228</u>	<u>51,115</u>
NET CURRENT ASSETS			
		<u>37,228</u>	<u>51,115</u>
TOTAL ASSETS LESS CURRENT LIABILITIES			
		<u>116,777</u>	<u>130,711</u>
NET ASSETS			
		<u>116,777</u>	<u>130,711</u>
FUNDS			
Unrestricted funds:	17		
General fund		24,755	49,114
Restricted funds:			
Restricted Funds			
		<u>92,022</u>	<u>81,597</u>
TOTAL FUNDS			
		<u>116,777</u>	<u>130,711</u>

The charitable company is entitled to exemption from audit under Section 477 of the Companies Act 2006 for the year ended 30 September 2023.

The members have not required the company to obtain an audit of its financial statements for the year ended 30 September 2023 in accordance with Section 476 of the Companies Act 2006.

The trustees acknowledge their responsibilities for

- (a) ensuring that the charitable company keeps accounting records that comply with Sections 386 and 387 of the Companies Act 2006 and
- (b) preparing financial statements which give a true and fair view of the state of affairs of the charitable company as at the end of each financial year and of its surplus or deficit for each financial year in accordance with the requirements of Sections 394 and 395 and which otherwise comply with the requirements of the Companies Act 2006 relating to financial statements, so far as applicable to the charitable company.

The notes form part of these financial statements

FREIGHTLINERS FARM LIMITED

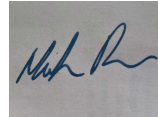
BALANCE SHEET - continued
30 SEPTEMBER 2023

These financial statements have been prepared in accordance with the provisions applicable to charitable companies subject to the small companies regime.

The financial statements were approved by the Board of Trustees and authorised for issue on 27th June 2024 and were signed on its behalf by:



Adam Weatherhead
Trustee



Mark Rowe
Trustee

The notes form part of these financial statements

FREIGHTLINERS FARM LIMITED

NOTES TO THE FINANCIAL STATEMENTS FOR THE YEAR ENDED 30 SEPTEMBER 2023

1. ACCOUNTING POLICIES

Basis of preparing the financial statements

The financial statements of the charitable company, which is a public benefit entity under FRS 102, have been prepared in accordance with the Charities SORP (FRS 102) 'Accounting and Reporting by Charities: Statement of Recommended Practice applicable to charities preparing their accounts in accordance with the Financial Reporting Standard applicable in the UK and Republic of Ireland (FRS 102) (effective 1 January 2019)', Financial Reporting Standard 102 'The Financial Reporting Standard applicable in the UK and Republic of Ireland' and the Companies Act 2006. The financial statements have been prepared under the historical cost convention.

Going Concern

The board of directors and management confirmed that they have secured sufficient fundings for the next foreseeable future. In addition, the company has guaranteed financial support from local communities, donors and Islington councils.

As a result of this, the accounts have been prepared on a going concern basis.

Income

All income is recognised in the Statement of Financial Activities once the charity has entitlement to the funds, it is probable that the income will be received and the amount can be measured reliably.

Voluntary income is received by way of grants, donations and gifts and is included in full in the Statement of Financial Activities when receivable. Grants, where entitlement is not conditional on the delivery of a specific performance by the charity, are recognised when the charity becomes unconditionally entitled to the grant.

Donated services and facilities are included at the value to the charity where this can be quantified. The value of services provided by volunteers has not been included in these accounts.

Investment income is included when receivable.

Incoming resources from charitable trading activities are accounted for when earned.

Incoming resources from grants, where related to performance and specific deliverables, are accounted for as the charity earns the right to consideration by its performance.

Expenditure and irrecoverable vat

Liabilities are recognised as expenditure as soon as there is a legal or constructive obligation committing the charity to that expenditure, it is probable that a transfer of economic benefits will be required in settlement and the amount of the obligation can be measured reliably. Expenditure is accounted for on an accruals basis and has been classified under headings that aggregate all cost related to the category. Where costs cannot be directly attributed to particular headings they have been allocated to activities on a basis consistent with the use of resources.

Expenditure is recognised on an accrual basis as a liability is incurred. Expenditure includes any VAT which cannot be fully recovered, and is reported as part of the expenditure to which it relates:

Costs of generating funds comprise the costs associated with attracting voluntary income and the costs of trading for fundraising purposes including the charity's shop.

FREIGHTLINERS FARM LIMITED

NOTES TO THE FINANCIAL STATEMENTS - continued FOR THE YEAR ENDED 30 SEPTEMBER 2023

1. ACCOUNTING POLICIES - continued

Expenditure and irrecoverable vat

Charitable expenditure comprises those costs incurred by the charity in the delivery of its activities and services for its beneficiaries. It includes both costs that can be allocated directly to such activities and those costs of an indirect nature necessary to support them.

Governance costs include those costs associated with meeting the constitutional and statutory requirements of the charity and include the audit fees and costs linked to the strategic management of the charity.

All costs are allocated between the expenditure categories of the SoFA on a basis designed to reflect the use of the resource. Costs relating to a particular activity are allocated directly, others are apportioned on an appropriate basis e.g. floor areas, per capita or estimated usage as set out in the notes to the accounts.

Tangible fixed assets

Depreciation is provided at the following annual rates in order to write off each asset over its estimated useful life.

Short leasehold	- 2% on cost
Improvements to property	- 15% on cost
Fixtures and fittings	- at varying rates on cost

Tangible fixed assets are stated at historical cost less accumulated depreciation and any accumulated impairment losses. Historical cost includes expenditure that is directly attributable to bringing the asset to the location and condition necessary for it to be capable of operating in the manner intended by management.

Taxation

The charity is exempt from corporation tax on its charitable activities.

Fund accounting

Unrestricted funds can be used in accordance with the charitable objectives at the discretion of the trustees.

Restricted funds can only be used for particular restricted purposes within the objects of the charity. Restrictions arise when specified by the donor or when funds are raised for particular restricted purposes.

Designated funds are Unrestricted funds earmarked by the Management Committee for particular purposes.

Further explanation of the nature and purpose of each fund is included in the notes to the financial statements.

Debtors

Basic financial assets, including trade and other debtors, are initially recognised at transaction price, unless the arrangement constitutes a financing transaction, where the transaction is measured at the present value of the future receipts discounted at a market rate of interest. Such assets are subsequently carried at amortised cost using the effective interest method, less any impairment.

FREIGHTLINERS FARM LIMITED

NOTES TO THE FINANCIAL STATEMENTS - continued FOR THE YEAR ENDED 30 SEPTEMBER 2023

1. ACCOUNTING POLICIES - continued

Cash and Cash Equivalents

Cash and cash equivalents are represented by cash in hand, deposits held at call with financial institutions, and other short-term highly liquid investments that mature in no more than three months from the date of acquisition and that are readily convertible to known amounts of cash with insignificant risk of change in value.

Creditors

Basic financial liabilities, including trade and other creditors, loans from third parties and loans from related parties, are initially recognised at transaction price, unless the arrangement constitutes a financing transaction, where the debt instrument is measured at the present value of the future payments discounted at a market rate of interest. Such instruments are subsequently carried at amortised cost using the effective interest method, less and impairment.

Pension costs

The charity operates a defined contribution pension scheme. Contributions payable to the charity's pension scheme are charged to the Statement of Financial Activities in the period to which they relate.

2. GRANTS AND DONATIONS

	30.9.23	30.9.22
	£	£
Gift aid	2,128	24,985
Legacies	-	17,000
Grants and Donations	112,806	127,818
	<hr/> 114,934 <hr/>	<hr/> 169,803 <hr/>

FREIGHTLINERS FARM LIMITED

**NOTES TO THE FINANCIAL STATEMENTS - continued
FOR THE YEAR ENDED 30 SEPTEMBER 2023**

2. GRANTS AND DONATIONS - continued

Grants received, included in the above, are as follows:

	30.9.23	30.9.22
	£	£
Donations under £1,000	8,035	8,959
LB Islington Green Space and Leisure Division	32,000	32,000
J&M Douglas	5,000	5,000
L Matlock	10,000	10,000
Mayor of London's Greener City Fund	-	3,869
LB Islington Children's Services	9,597	9,165
City Bridge Trust	-	10,425
Coronavirus Job Retention Scheme	4,372	1,400
LB Islington Sustain Big Clean Switch	-	500
Anonymous	-	40,000
Waitrose Community Matters	1,500	1,500
Robert McCallister	5,224	5,000
London Community Energy Fund	4,610	-
Hilden Charitable Trust	1,500	-
Kusuma Trust	25,000	-
Anonymous	5,968	-
	112,806	127,818
	112,806	127,818

3. INVESTMENT INCOME

	30.9.23	30.9.22
	£	£
Deposit account interest	16	-
	16	-
	16	-

FREIGHTLINERS FARM LIMITED

**NOTES TO THE FINANCIAL STATEMENTS - continued
FOR THE YEAR ENDED 30 SEPTEMBER 2023**

4. INCOME FROM CHARITABLE ACTIVITIES

		30.9.23	30.9.22
	Activity	£	£
Income from provision of goods and services	Charitable Activities	81,149	62,316
		<u> </u>	<u> </u>

Grants received, included in the above, are as follows:

		30.9.23	30.9.22
		£	£
CAFE Income		1,477	5,058
Education Income		18,836	4,830
Other Farm Income		30,774	19,305
LBI Islington (SEND)		750	2,405
Isledon Arts		5,000	10,960
Riverside School		7,032	3,278
Southover School Partnership		17,280	16,480
		<u> </u>	<u> </u>
		81,149	62,316
		<u> </u>	<u> </u>

5. RAISING FUNDS

Raising donations and legacies

		30.9.23	30.9.22
		£	£
Fundraising Costs		624	96
		<u> </u>	<u> </u>

6. CHARITABLE ACTIVITIES COSTS

	Direct Costs £	Support costs (see note 7) £	Totals £
Community Support	50,654	21,411	72,065
Education	42,335	17,619	59,954
Environment	30,330	12,764	43,094
City farming and visitor services	24,836	9,460	34,296
	<u> </u>	<u> </u>	<u> </u>
	148,155	61,254	209,409
	<u> </u>	<u> </u>	<u> </u>

FREIGHTLINERS FARM LIMITED

**NOTES TO THE FINANCIAL STATEMENTS - continued
FOR THE YEAR ENDED 30 SEPTEMBER 2023**

7. SUPPORT COSTS

	Management	Governance costs	Totals
	£	£	£
Community Support	18,711	2,700	21,411
Education	17,619	-	17,619
Environment	12,764	-	12,764
City farming and visitor services	9,460	-	9,460
	58,554	2,700	61,254
	58,554	2,700	61,254

8. NET INCOME/(EXPENDITURE)

Net income/(expenditure) is stated after charging/(crediting):

	30.9.23	30.9.22
	£	£
Depreciation - owned assets	5,603	5,039
Independent Examiners Fees	2,700	2,700
	8,303	7,739
	8,303	7,739

9. TRUSTEES' REMUNERATION AND BENEFITS

There were no trustees' remuneration or other benefits for the year ended 30 September 2023 nor for the year ended 30 September 2022.

Trustees' expenses

There were no trustees' expenses paid for the year ended 30 September 2023 nor for the year ended 30 September 2022.

10. STAFF COSTS

	30.9.23	30.9.22
	£	£
Wages and salaries	145,224	161,199
	145,224	161,199
	145,224	161,199

Staff costs also included training expenses of £1,176 (2022: £1,673) incurred in the year.

The average monthly number of employees during the year was as follows:

	30.9.23	30.9.22
Engaged on Charitable Activities	4	5
Engaged on administration and management	1	1
	5	6
	5	6

FREIGHTLINERS FARM LIMITED

**NOTES TO THE FINANCIAL STATEMENTS - continued
FOR THE YEAR ENDED 30 SEPTEMBER 2023**

10. STAFF COSTS - continued

No employees received emoluments in excess of £60,000.

11. COMPARATIVES FOR THE STATEMENT OF FINANCIAL ACTIVITIES FOR 30 SEPT 2022

	Unrestricted fund £	Restricted fund £	Total funds £
INCOME AND ENDOWMENTS FROM			
Grants and Donations	145,844	23,959	169,803
Charitable activities			
Charitable Activities	62,316	-	62,316
Total	208,160	23,959	232,119
EXPENDITURE ON			
Raising funds	96	-	96
Charitable activities			
Community Support	72,108	12,687	84,795
Education	67,391	12,688	80,079
Environment	40,435	7,581	48,016
City farming and visitor services	21,839	-	21,839
Total	201,869	32,956	234,825
NET INCOME/(EXPENDITURE)	6,291	(8,997)	(2,706)
Transfers between funds	(3,428)	3,428	-
Net movement in funds	2,863	(5,569)	(2,706)
RECONCILIATION OF FUNDS			
Total funds brought forward	46,251	87,166	133,417
TOTAL FUNDS CARRIED FORWARD	49,114	81,597	130,711

FREIGHTLINERS FARM LIMITED

**NOTES TO THE FINANCIAL STATEMENTS - continued
FOR THE YEAR ENDED 30 SEPTEMBER 2023**

12. KEY MANAGEMENT PERSONNEL

Key Management Personnel is considered to be the CEO and the Board of Trustees. Her gross remuneration was £34,217 for the year ended 30th September 2023. (30th September 2022 - £35,042)

13. TANGIBLE FIXED ASSETS

	Short leasehold £	Improvements to property £	Fixtures and fittings £	Totals £
COST				
At 1 October 2022	95,922	3,428	65,138	164,488
Additions	-	-	5,556	5,556
	<hr/>	<hr/>	<hr/>	<hr/>
At 30 September 2023	95,922	3,428	70,694	170,044
	<hr/>	<hr/>	<hr/>	<hr/>
DEPRECIATION				
At 1 October 2022	46,588	514	37,790	84,892
Charge for year	1,918	514	3,171	5,603
	<hr/>	<hr/>	<hr/>	<hr/>
At 30 September 2023	48,506	1,028	40,961	90,495
	<hr/>	<hr/>	<hr/>	<hr/>
NET BOOK VALUE				
At 30 September 2023	47,416	2,400	29,733	79,549
	<hr/> <hr/>	<hr/> <hr/>	<hr/> <hr/>	<hr/> <hr/>
At 30 September 2022	49,334	2,914	27,348	79,596
	<hr/> <hr/>	<hr/> <hr/>	<hr/> <hr/>	<hr/> <hr/>

14. DEBTORS: AMOUNTS FALLING DUE WITHIN ONE YEAR

	30.9.23	30.9.22
	£	£
Trade debtors	26,098	2,482
Prepayments and accrued income	6,500	20,613
Accruals	-	4,372
	<hr/>	<hr/>
	32,598	27,467
	<hr/> <hr/>	<hr/> <hr/>

FREIGHTLINERS FARM LIMITED

**NOTES TO THE FINANCIAL STATEMENTS - continued
FOR THE YEAR ENDED 30 SEPTEMBER 2023**

15. CREDITORS: AMOUNTS FALLING DUE WITHIN ONE YEAR

	30.9.23	30.9.22
	£	£
Trade creditors	6,671	4,285
Social security and other taxes	8,919	5,690
Other creditors	629	683
Accrued expenses	2,700	2,700
	18,919	13,358
	18,919	13,358

16. ANALYSIS OF NET ASSETS BETWEEN FUNDS

	Unrestricted fund	Restricted fund	30.9.23 Total funds	30.9.22 Total funds
	£	£	£	£
Fixed assets	-	79,549	79,549	79,596
Current assets	43,674	12,473	56,147	64,473
Current liabilities	(18,919)	-	(18,919)	(13,358)
	24,755	92,022	116,777	130,711
	24,755	92,022	116,777	130,711

17. MOVEMENT IN FUNDS

**Analysis of Restricted Reserves carried forward as at 30th
September 2023**

	30.9.2023	30.9.2022
	£	£
Kusuma Trust	12,496	-
London Community Energy Fund	(6)	-
LBI Children Services	3	1
LBI Local Initiatives	-	2,000
Social Farms and Gardens Hilden Charitable Trust Summer Activity Fund	(20)	-
	12,473	2,001
Total Revenue Restricted Funds	12,473	2,001
Fixed Asset Fund (See note 12)	79,549	79,596
	92,022	81,597
Restricted Funds carried forward - 30th Sept	92,022	81,597

FREIGHTLINERS FARM LIMITED

NOTES TO THE FINANCIAL STATEMENTS - continued FOR THE YEAR ENDED 30 SEPTEMBER 2023

18. RELATED PARTY DISCLOSURES

During the year, the Farm had financial transactions of £Nil (30th September 2022: £3,100) with London City Farms and Community Gardens Association, whose trustee is also the Chief Executive Officer of the Farm.

FREIGHTLINERS FARM LIMITED

**DETAILED STATEMENT OF FINANCIAL ACTIVITIES
FOR THE YEAR ENDED 30 SEPTEMBER 2023**

	30.9.23	30.9.22
	£	£
INCOME AND ENDOWMENTS		
Grants and Donations		
Gift aid	2,128	24,985
Legacies	-	17,000
Grants and Donations	112,806	127,818
	<hr/>	<hr/>
	114,934	169,803
Investment income		
Deposit account interest	16	-
Charitable activities		
Income from provision of goods and services	81,149	62,316
	<hr/>	<hr/>
Total incoming resources	196,099	232,119
EXPENDITURE		
Raising donations and legacies		
Fundraising Costs	624	96
Charitable activities		
Salaries	127,781	134,198
COG for Trading	2,357	4,180
Premises Costs	16,031	145
General Admin	326	211
Other Support Costs	1,660	24,254
	<hr/>	<hr/>
	148,155	162,988
Support costs		
Management		
Wages	17,443	27,001
Premises Costs	452	21,191
Insurance	810	2,765
Professional Fees	3,323	3,825
Other Support Costs	36,526	14,259
	<hr/>	<hr/>
	58,554	69,041

This page does not form part of the statutory financial statements

FREIGHTLINERS FARM LIMITED

DETAILED STATEMENT OF FINANCIAL ACTIVITIES FOR THE YEAR ENDED 30 SEPTEMBER 2023

	30.9.23	30.9.22
	£	£
Management		
Governance costs		
Independent Examiners Fees	<u>2,700</u>	<u>2,700</u>
Total resources expended	<u>210,033</u>	<u>234,825</u>
Net expenditure	<u><u>(13,934)</u></u>	<u><u>(2,706)</u></u>

This page does not form part of the statutory financial statements

FREIGHTLINERS FARM LIMITED

England & Wales - Charity number 1014216

Accounts

REGISTERED COMPANY NUMBER: 02740034 (England and Wales)
REGISTERED CHARITY NUMBER: 1014216

REPORT OF THE TRUSTEES AND
FINANCIAL STATEMENTS FOR THE YEAR ENDED 30 SEPTEMBER 2022
FOR
FREIGHTLINERS FARM LIMITED
(A COMPANY LIMITED BY GUARANTEE)

Prestons & Jacksons Partnership LLP
364 - 368 Cranbrook Road
Ilford
Essex
IG2 6HY

FREIGHTLINERS FARM LIMITED

CONTENTS OF THE FINANCIAL STATEMENTS FOR THE YEAR ENDED 30 SEPTEMBER 2022

	Page
Report of the Trustees	1 to 8
Independent Examiner's Report	9
Statement of Financial Activities	10
Balance Sheet	11 to 12
Notes to the Financial Statements	13 to 21
Detailed Statement of Financial Activities	22

FREIGHTLINERS FARM LIMITED

REPORT OF THE TRUSTEES FOR THE YEAR ENDED 30 SEPTEMBER 2022

The trustees who are also directors of the charity for the purposes of the Companies Act 2006, present their report with the financial statements of the charity for the year ended 30 September 2022. The trustees have adopted the provisions of Accounting and Reporting by Charities: Statement of Recommended Practice applicable to charities preparing their accounts in accordance with the Financial Reporting Standard applicable in the UK and Republic of Ireland (FRS 102) (effective 1 January 2019).

FREIGHTLINERS FARM LIMITED

REPORT OF THE TRUSTEES FOR THE YEAR ENDED 30 SEPTEMBER 2022

OBJECTIVES AND ACTIVITIES

Objectives and aims

A summary of the objects of the charity as set out in its governing document

The objects of the charity are:

- Improve quality of life particularly for those most in need;
- Promote community participation, education and skills development;
- Promote caring, nurturing and respect for others, the natural and built environment and all living things within the London Boroughs of Islington, Hackney, Haringey, Camden and their environs.

The charity's aims including the changes or differences it seeks to make through its activities.

The charity aims to achieve the above objectives by means of:

- associating with the local authorities, voluntary organisations and inhabitants in a common effort to provide facilities in the interest of social welfare for recreation and other leisure time occupations;
- providing learning opportunities covering agriculture, horticulture, home crafts, country life, the natural environment and related subjects;
- educating people in the care and consideration for all animals particularly animals in need of care and protection. For these purposes to care for and exhibit animals in common agricultural and domestic use and rare breeds of farm animals so that the public will have a greater awareness of and appreciation for such animals;
- providing a rural type outdoor environment in the inner city which enables urban people to experience a little bit of the countryside;
- demonstrating social, economic and environmental sustainability through modeling of practices, use of technology, fair access, enterprise and involvement.

In setting our objectives and planning our activities, Trustees have given careful consideration to the Charity Commission's guidance on public benefit.

Summary of the main activities of the charity in relation to its objects

The diverse range of activities which are carried out by the Farm include project work, commissioned services, social enterprise and ongoing development work. In pursuit of its stated objectives, the charity's activities can be classified according to the aims of individual pieces of work as follows:

- Community support by providing facilities in the interest of social welfare for therapy, recreation and other leisure time occupations;
- Education by providing training and learning opportunities;
- Environmental awareness by providing facilities to improve appreciation, consideration and care for all animals and their habitats;
- Social enterprise by providing unique opportunities for local people, developing educational food programmes and supplying local goods and services in an accessible manner and at a reasonable cost.

Public Benefit

The Trustees confirm that they have complied with the duty in section 4 of the Charities Act 2006 to have due regard to public benefit guidance published by the Commission in determining the activities undertaken by the Charity.

FREIGHTLINERS FARM LIMITED

REPORT OF THE TRUSTEES FOR THE YEAR ENDED 30 SEPTEMBER 2022

ACHIEVEMENT AND PERFORMANCE

Charitable activities

2021 started under the continued shadow of Covid-19 restrictions and the significant impact of the global pandemic on mental health and wellbeing of people across our society becoming increasingly evident. The farm returned to open access and pre-pandemic opening hours in November 2021 with social distancing measures in place to ensure the safety of our staff, volunteers, service users and visitors. We continued to operate with strict social distancing in part due to the rise of the omicron variant throughout the winter and into late spring to ensure that those most vulnerable to Covid-19 were able to feel safe participating in the farm activities and that the farm could operate and provide a consistent service. Understanding the importance of the space and opportunities that the farm provides for many different people the staff, volunteers and trustees worked hard to slowly open up opportunities in a staged manner weighing up the risks and benefits of changes to operations for our community. Throughout the year we prioritised maximising access to the farm as an open green space for everyone living in our very urban environment and the provision of targeted education and therapeutic activity for those who were most isolated and in need of the benefits the farm provides. We are proud of the responsiveness of the farm in the face of the enormous challenge of Covid-19

There were many highlights this year the arrival of Steve and Kiara the Dexter Cattle, the lovely new pond complete with solar powered fountain, a full group of excited young people joining Summersiversity and long-tailed tits whizzing about the garden. Topping it off in September 2022 we were very pleased to be able to celebrate the success of the farm and the hard work of our staff and volunteers with a series of awards for the Farm Gardens.

- Gold Medal and Best Community Garden in 'Islington In Bloom'
- Gold Medal, 'Winner Our Community Garden Award', Outstanding Level in 'Your Neighbourhood Scheme' and also the Judges Award for London In Bloom.

Access to the outdoors, nature and play

From November 2021 the farm returned to full open access provision and we were happy to see the return of visitor numbers as people were able to drop by on a regular basis without booking. Our completed new garden spaces provided excitement for families discovering the farm for the first time and returning to the farm as people were able to get out and about without the restriction of pandemic regulations.

We were once again able to offer face to face holiday drop in sessions for children and families and children took part in a wide range of workshops from planting spider plants to block printed minibeasts for our Halloween cauldron; felt and wool crafts to producing a farmyard journey stick.

After children and young people had missed out on so much during Covid-19 restrictions, schools and community groups were keen to support children to return to trips and visits out and to access the farm as a local outdoor space. 63 classes with 1,760 pupils took part in guided visits and we estimate a further 1,500 children visited on a self-guided basis with schools, nurseries and childminders. It was noticeable that more schools than ever took part in workshop sessions including candle making, seed sowing and felt making providing children with a chance to experience new things outside of the classroom and home environment. 15 organisations supporting children, families, vulnerable adults and young people also took part in guided activities providing their beneficiaries with an introduction to the farm, the outdoors and animals. These supported sessions enabled people who otherwise might not access the benefits of the farm to overcome barriers such as confidence, safety and difficulties with transport. Those taking part in the activities included families with experience of domestic violence, refugees and asylum seekers, children and adults with disabilities including mental health problems and older people. Through these sessions, participants were able to discover the farm space and engage with the staff and volunteers and to gain the confidence to visit the farm independently in the future.

FREIGHTLINERS FARM LIMITED

REPORT OF THE TRUSTEES FOR THE YEAR ENDED 30 SEPTEMBER 2022

Children and young people's involvement

At the core of our work is providing an environment where children and young people are able to be involved hands on, learn actively and engage with their community. Activities with animals, the outdoors and nature seem to have grown in popularity amongst young people and as result our Summersiversity and Launchpad Programmes were so oversubscribed that we were asked to expand to three weeks of provision.

36 young people took part in at the week long programme of city farming activities and animal care. They gained skills and knowledge of animal care, gardening, food processing and crafts and had a lot of fun on the way. They made friends, supported each other and progressed to volunteering roles, college and university.

Southover Partnership School is an independent special day school for pupils with social, emotional and mental health difficulties, autistic spectrum disorder and other complex needs. We were pleased to welcome them back to the farm to continued their weekly vocational training sessions. Over the course of the year, 16 pupils took part in sessions based around animal care and farm site management with a few extras of crafts, cooking and coffee shop skills. The farm provided a therapeutic space with individualised learning and opportunities to work towards nationally recognised accreditations. Most importantly, the farm provided a platform for young people to develop their self- confidence and to feel safe.

Our regular young farmers sessions provided opportunities for 23 young people aged 12 to 19 to participate in volunteering and therapeutic learning placements at the farm on a regular basis. Young farmers come from diverse backgrounds with different interests, needs and experiences but all sharing in the unique opportunities that the farm provides. They were given an opportunity to:

- learn about and experience work with farm animals;
- contribute and shape ideas for a space in their community and to help to bring those ideas into reality;
- meet and learn from new people who they would not otherwise engage with expanding their horizons, developing understanding and creating contacts for the future; and
- enjoy being in a tranquil green space away from the city bustle and demands and pressures of urban life.

As well as gaining skills in animal care, horticulture and community work through hands- on involvement in the day to day running of the farm, young farmers participated in all sorts of interesting activities and developments. Holiday discovery sessions included: making musical instruments from recycled animal pens and bamboo; building a cordwood folly; running our summer cafe, and working on the big garden and yard redevelopment. Regular participants helped with site construction and maintenance, school and community visits, providing visitor information and services and gardening - this included - sowing, landscaping, planting, harvesting and propagating. Through all these activities young people gained key transferable skills such as team work, self-management, communication and reflection for future careers and learning and overcame barriers to opportunity such as invisible disability, low income, prejudice and discrimination. As a result young people had greater resilience and improved life opportunities.

Inclusive volunteering and farming activities

Over the past twelve months our dedicated team of volunteers together with supporting farm staff continued to adapt and adjust their working practices to facilitate an increasing number of visitors and young farmers whilst maintaining social distancing and safety for themselves and others. Whilst we continued to maintain small working teams full opening hours and farm services increased the essential daily tasks lists and visitor interactions.

FREIGHTLINERS FARM LIMITED

REPORT OF THE TRUSTEES FOR THE YEAR ENDED 30 SEPTEMBER 2022

'Sometimes I find it hard when there are a lot of people but I can always ask the staff to help or let them know I need to do something quieter and I'm able to work well with more people and feel more confident when its busy now.' Young Person on Alternative Education Programme

In late spring, with the busy summer looming, we were keen to take up offers of practical help from local people but mindful that many of our long term volunteers remained particularly vulnerable to the virus and in need of greater staff support through the mental health impacts of the pandemic. During the year 31 adults volunteered on a regular weekly basis 6 older people over 65 and 15 people with a disability or long term health condition. To create additional space for volunteering and help with some hefty maintenance tasks we established a regular drop-in evening session. Through the summer to the year end 11 sessions took place with 10 people mucking-in (sometimes literally). Volunteers appreciated the opportunity to get involved in the farm gain some new skills and relax amongst the animals and green space. The sessions have proved a useful addition to our volunteering programme which we intend to continue, reaching working people and people who cannot commit to a weekly slot.

'I'm from the countryside and I really miss being around animals this has been such a relief from being always in the busy city mostly indoors' New Volunteer

Site developments and improvement

The farm gardens continue to grow in size, maturity and popularity. At the beginning of the year the final parts of the new ornamental garden were completed. The ornamental pond was built from cast concrete and resin, a recycled metalwork cover keeps it safe and a solar powered water feature was installed. Pupils from Southover Partnership School worked with farm staff to recycle mortar, timber and metal work to rebuild and extend garden beds, fencing and walkways. As the rarer planting matures new opportunities for learning about horticulture and botany arise. During the year young farmers have coppiced hazel for bean poles and fencing; our adult gardeners have propagated flowering ginger, cardamom, taro, rice paper plant and devils fingers; visiting children rehomed baby spider plants and school groups planted salad leaves and spring flowering bulbs.

The new natural workshop area planting was increased with native wildflowers bluebells, wood anemone, wild daffodil and greater stitchwort. The cordwood folly was completed and young farmers trialled a range of materials to design and create a roof structure.

Rare breeds and other animals

The farm continues to keep a range of rare and traditional breeds of farm animal. For the first time in at least 20 years our geese hatched goslings which whilst a challenge for staff and volunteers in negotiating feeding and mucking out time with three adult geese fiercely defending their nests provided everyone with a bit of ahh factor as the little fluffy goslings emerged.

The farm also welcomed new Dexter cattle Steve and Kiara whose move to the farm from their breeder in Kent had been excitedly anticipated for six months whilst transport arrangements were put in place. These lovely friendly little cows did not disappoint and have been a star attraction since their arrival.

As part of a new partnership with the Royal Veterinary College the farm hosted a day for preclinical students to put their learning into a more practical context. Students were given an introduction to the farm and animals by the staff and then encouraged to think about the health and husbandry advice they would provide to the farm as if it was their client. The programme was a good way of introducing newly qualifying vets to the importance, roles and veterinary support requirements of city farms. We received positive feedback from students and the veterinary college staff.

FREIGHTLINERS FARM LIMITED

REPORT OF THE TRUSTEES FOR THE YEAR ENDED 30 SEPTEMBER 2022

Fundraising and social enterprise

In June we hosted an exciting event for the Worshipful Company of Farmers to raise the profile and funding needs of all the London City Farms across London. The event brought together all 12 London City Farms to showcase the different aspects of their work. Our volunteers guided invited guests around the Farm providing information about our work and introduced the showcase activities provided by our city farming colleagues. The Farm's Café put on an amazing buffet and people enjoyed a very warm evening of networking and sharing the importance of city farms for London communities. The event supported a joint fundraising initiative for the city farms which has brought in unrestricted funds to be distributed between all London City farms.

The farm continues to seek diversification in its fundraising base. In response to unmet need, we have significantly increased our commissioned alternative education provision. We have also witnessed a renewed interest in hosting corporate volunteering days at the farm. To do so effectively we will need to invest further resources to be able to adequately support these activities. We also see future income streams from supply of plants, manure and seasonal products including preserves, fresh garden produce and Christmas trees.

Our thanks go to all the people who donate to the farm through our fundraising pages, in person and direct to our bank account. We are so grateful and as the cost of living impacts on the farm's day to day running costs we know that these funds are becoming more and more important to bridge the gap between our operating expenditure and income streams. We were overwhelmed by the support of a number of individual donors who made significant financial contributions to the farm during the year and have provided the main base of secured income for the fiscal year.

Project and core grant fundraising remains an important aspect of our fundraising plans however in this year we have taken the opportunity to increase our commissioned education programme to reach more young people in need. We are now looking to raise grant funds to expand our capacity for education and therapeutic support further so we can better meet demand over the coming three to five years.

We would like to thank all our donors and supporters, including the City Bridge Trust, Greater London Authority and London Borough of Islington for keeping the farm thriving.

FINANCIAL REVIEW

Financial position

The Statement of Financial Activities shows a deficit of £2,706 (2021: deficit £2,360).

Fund balances at the year end stood at £130,711 (2021: £133,417) of which £49,114 (2021: £46,251) was unrestricted and £81,597 (2021: £87,166) was restricted.

Reserves policy

The Management Committee has established a policy whereby the restricted reserves equate to the net book value of certain company tangible fixed assets and that all other reserves are classified as unrestricted reserves. The Management Committee maintains the ambition to establish reserves of 3-6 months running costs, as recommended by the Charity Commission however the Covid-19 pandemic resulted in a depletion of reserves which will take longer than anticipated to replenish.

Availability and adequacy of assets of each of the funds

The Management Committee is satisfied that the charity's assets in each fund are available and adequate to fulfill its obligations in respect of each fund.

FREIGHTLINERS FARM LIMITED

REPORT OF THE TRUSTEES FOR THE YEAR ENDED 30 SEPTEMBER 2022

FUTURE PLANS AND DEVELOPMENTS

In 2022-23 we are seeking to increase our education programme with additional alternative provision placements and further opportunities for schools, particularly SEND specialist schools, to have regular/ repeat sessions providing students with a greater depth of learning.

We will continue to review and improve our renewable energy generation and storage capacity thanks to a grant from the London Community Energy Fund. During this year we have begun planning and feasibility of further generation on site and in particular converting the underused bee house to a solar generating greenhouse space with Power Up North London. An individual donor's sponsorship will also enable us to upgrade our current PV array and maximise generation from these panels. We expect to have the panels fully functioning in time for summer 2023 providing much needed relief from rising energy bills.

In 2023 we hope to establish an additional breed of RBST vulnerable sheep at the farm and to develop our wool processing and wool crafts items as a new income stream.

We hope to further establish the garden as a space for learning and to continue to grow the nursery garden social enterprise. There are also some major landscaping and tree maintenance projects to complete during the coming and following years.

STRUCTURE, GOVERNANCE AND MANAGEMENT

Nature of the Governing Document and constitution of the charity

The charity is controlled by its governing document, a deed of trust, and constitutes a limited company, limited by guarantee, as defined by the Companies Act 2006.

The organisation is a charitable company limited by guarantee, incorporated on 14th August 1992. The company was established under a Memorandum of Association which established the objects and powers of the charitable company and is governed under its Articles of Association. In the event of the company being wound up, each member is required to contribute an amount not exceeding £1.

The organisational structure of the charity and how decisions are made.

Freightliners Farm Limited has a Management Committee who meet at least five times a year and is responsible for the strategic direction and policy of the charity. At present the Committee has five members, from a variety of professional backgrounds relevant to the work of the charity including people from the local area. A finance sub-committee consisting of the Chief Executive, Chair and Treasurer are delegated to scrutinise routine financial management and report to the Committee.

The major risks to which the charity is exposed and reviews and systems mitigate

The trustees have a duty to identify and review the risks to which the charity is exposed and to ensure appropriate controls are in place to provide reasonable assurance against fraud and error.

The Management Committee has conducted its own review of the major risks to which the charity is exposed and systems have been established to mitigate those risks. Significant external risks to funding have been monitored and for this reason diversification of funding activities is underway. Internal risks are minimised by the implementation of procedures for authorisation of all transactions and projects and to ensure consistent quality of delivery for all operational aspects of the charitable company. These procedures are periodically reviewed to ensure that they still meet the needs of the charity.

REFERENCE AND ADMINISTRATIVE DETAILS

Registered Company number

02740034 (England and Wales)

FREIGHTLINERS FARM LIMITED

**REPORT OF THE TRUSTEES
FOR THE YEAR ENDED 30 SEPTEMBER 2022**

Registered Charity number

1014216

Registered office

Sheringham Road
N7 8PF

Trustees

O.S Robinson

N.McMinn - Resigned on 29th June 2022

M.Rowe

P.MacIntyre

A. Weatherhead

S. Victoria Forrest - Appointed on 13th December 2022

Company Secretary:

E McAllister

Chief Executive Officer:

E McAllister

Independent Examiner

A. Patel BA(Hons) FCA BFP

Prestons & Jacksons Partnership LLP

364 - 368 Cranbrook Road

Ilford

Essex

IG2 6HY

This report has been prepared in accordance with the special provisions of Part 15 of the Companies Act 2006 relating to small companies.

Approved by order of the board of trustees on 20 JULY 2023 and signed on its behalf by:


.....
Trustee / Director: PETER MACINTYRE

**INDEPENDENT EXAMINER'S REPORT TO THE TRUSTEES OF
FREIGHTLINERS FARM LIMITED**

Independent examiner's report to the trustees of Freightliners Farm Limited ('the Company')

I report to the charity trustees on my examination of the accounts of the Company for the year ended 30 September 2022.

Responsibilities and basis of report

As the charity's trustees of the Company (and also its directors for the purposes of company law) you are responsible for the preparation of the accounts in accordance with the requirements of the Companies Act 2006 ('the 2006 Act').

Having satisfied myself that the accounts of the Company are not required to be audited under Part 16 of the 2006 Act and are eligible for independent examination, I report in respect of my examination of your charity's accounts as carried out under Section 145 of the Charities Act 2011 ('the 2011 Act'). In carrying out my examination I have followed the Directions given by the Charity Commission under Section 145(5) (b) of the 2011 Act.

Independent examiner's statement

I have completed my examination. I confirm that no matters have come to my attention in connection with the examination giving me cause to believe:

1. accounting records were not kept in respect of the Company as required by Section 386 of the 2006 Act; or
2. the accounts do not accord with those records; or
3. the accounts do not comply with the accounting requirements of Section 396 of the 2006 Act other than any requirement that the accounts give a true and fair view which is not a matter considered as part of an independent examination; or
4. the accounts have not been prepared in accordance with the methods and principles of the Statement of Recommended Practice for accounting and reporting by charities (applicable to charities preparing their accounts in accordance with the Financial Reporting Standard applicable in the UK and Republic of Ireland (FRS 102)).

I have no concerns and have come across no other matters in connection with the examination to which attention should be drawn in this report in order to enable a proper understanding of the accounts to be reached.



A. Patel BA(Hons) FCA BFP

Prestons & Jacksons Partnership LLP
364 - 368 Cranbrook Road
Ilford
Essex
IG2 6HY

Date: 26/07/2023

FREIGHTLINERS FARM LIMITED

**STATEMENT OF FINANCIAL ACTIVITIES
(INCORPORATING AN INCOME AND EXPENDITURE ACCOUNT)
FOR THE YEAR ENDED 30 SEPTEMBER 2022**

	Notes	Unrestricted fund £	Restricted fund £	30.9.22 Total funds £	30.9.21 Total funds £
INCOME AND ENDOWMENTS FROM					
Grants and Donations	2	145,844	23,959	169,803	191,821
Charitable activities					
Charitable Activities	3	62,316	-	62,316	20,842
Total		<u>208,160</u>	<u>23,959</u>	<u>232,119</u>	<u>212,663</u>
EXPENDITURE ON					
Raising funds	4	96	-	96	422
Charitable activities					
Community Support	5	72,108	12,687	84,795	68,401
Education		67,391	12,688	80,079	69,693
Environment		40,435	7,581	48,016	52,232
City farming and visitor services		21,839	-	21,839	24,275
Total		<u>201,869</u>	<u>32,956</u>	<u>234,825</u>	<u>215,023</u>
NET INCOME/(EXPENDITURE)					
Transfers between funds	17	6,291 <u>(3,428)</u>	(8,997) <u>3,428</u>	(2,706) <u>-</u>	(2,360) <u>-</u>
Net movement in funds		2,863	(5,569)	(2,706)	(2,360)
RECONCILIATION OF FUNDS					
Total funds brought forward		46,251	87,166	133,417	135,777
TOTAL FUNDS CARRIED FORWARD		<u><u>49,114</u></u>	<u><u>81,597</u></u>	<u><u>130,711</u></u>	<u><u>133,417</u></u>

The notes form part of these financial statements

FREIGHTLINERS FARM LIMITED

BALANCE SHEET 30 SEPTEMBER 2022

	Notes	30.9.22 £	30.9.21 £
FIXED ASSETS			
Tangible assets	12	79,596	81,207
CURRENT ASSETS			
Stocks	13	-	330
Debtors	14	27,467	20,038
Cash at bank		37,006	53,380
		<u>64,473</u>	<u>73,748</u>
CREDITORS			
Amounts falling due within one year	15	(13,358)	(21,538)
NET CURRENT ASSETS		<u>51,115</u>	<u>52,210</u>
TOTAL ASSETS LESS CURRENT LIABILITIES		<u>130,711</u>	<u>133,417</u>
NET ASSETS		<u>130,711</u>	<u>133,417</u>
FUNDS	17		
Unrestricted funds:			
General fund		49,114	46,251
Restricted funds:			
Restricted Funds		81,597	87,166
TOTAL FUNDS		<u>130,711</u>	<u>133,417</u>

The charitable company is entitled to exemption from audit under Section 477 of the Companies Act 2006 for the year ended 30 September 2022.

The members have not required the company to obtain an audit of its financial statements for the year ended 30 September 2022 in accordance with Section 476 of the Companies Act 2006.

The trustees acknowledge their responsibilities for

- (a) ensuring that the charitable company keeps accounting records that comply with Sections 386 and 387 of the Companies Act 2006 and
- (b) preparing financial statements which give a true and fair view of the state of affairs of the charitable company as at the end of each financial year and of its surplus or deficit for each financial year in accordance with the requirements of Sections 394 and 395 and which otherwise comply with the requirements of the Companies Act 2006 relating to financial statements, so far as applicable to the charitable company.

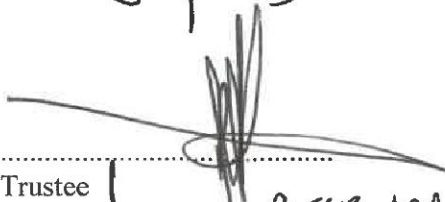
The notes form part of these financial statements

FREIGHTLINERS FARM LIMITED

BALANCE SHEET - continued
30 SEPTEMBER 2022

These financial statements have been prepared in accordance with the provisions applicable to charitable companies subject to the small companies regime.

The financial statements were approved by the Board of Trustees and authorised for issue on 20 JULY 2023 and were signed on its behalf by:


Trustee |
Director: PETER MACINTYRE

The notes form part of these financial statements

FREIGHTLINERS FARM LIMITED

NOTES TO THE FINANCIAL STATEMENTS FOR THE YEAR ENDED 30 SEPTEMBER 2022

1. ACCOUNTING POLICIES

Basis of preparing the financial statements

The financial statements of the charitable company, which is a public benefit entity under FRS 102, have been prepared in accordance with the Charities SORP (FRS 102) 'Accounting and Reporting by Charities: Statement of Recommended Practice applicable to charities preparing their accounts in accordance with the Financial Reporting Standard applicable in the UK and Republic of Ireland (FRS 102) (effective 1 January 2019)', Financial Reporting Standard 102 'The Financial Reporting Standard applicable in the UK and Republic of Ireland' and the Companies Act 2006. The financial statements have been prepared under the historical cost convention.

Income

All income is recognised in the Statement of Financial Activities once the charity has entitlement to the funds, it is probable that the income will be received and the amount can be measured reliably.

Voluntary income is received by way of grants, donations and gifts and is included in full in the Statement of Financial Activities when receivable. Grants, where entitlement is not conditional on the delivery of a specific performance by the charity, are recognised when the charity becomes unconditionally entitled to the grant.

Donated services and facilities are included at the value to the charity where this can be quantified. The value of services provided by volunteers has not been included in these accounts.

Investment income is included when receivable.

Incoming resources from charitable trading activities are accounted for when earned.

Incoming resources from grants, where related to performance and specific deliverables, are accounted for as the charity earns the right to consideration by its performance.

Expenditure and irrecoverable vat

Liabilities are recognised as expenditure as soon as there is a legal or constructive obligation committing the charity to that expenditure, it is probable that a transfer of economic benefits will be required in settlement and the amount of the obligation can be measured reliably. Expenditure is accounted for on an accruals basis and has been classified under headings that aggregate all cost related to the category. Where costs cannot be directly attributed to particular headings they have been allocated to activities on a basis consistent with the use of resources.

Expenditure is recognised on an accrual basis as a liability is incurred. Expenditure includes any VAT which cannot be fully recovered, and is reported as part of the expenditure to which it relates:

Costs of generating funds comprise the costs associated with attracting voluntary income and the costs of trading for fundraising purposes including the charity's shop.

Charitable expenditure comprises those costs incurred by the charity in the delivery of its activities and services for its beneficiaries. It includes both costs that can be allocated directly to such activities and those costs of an indirect nature necessary to support them.

Governance costs include those costs associated with meeting the constitutional and statutory requirements of the charity and include the audit fees and costs linked to the strategic management of the charity.

FREIGHTLINERS FARM LIMITED

NOTES TO THE FINANCIAL STATEMENTS - continued FOR THE YEAR ENDED 30 SEPTEMBER 2022

1. ACCOUNTING POLICIES - continued

Expenditure and irrecoverable vat

All costs are allocated between the expenditure categories of the SoFA on a basis designed to reflect the use of the resource. Costs relating to a particular activity are allocated directly, others are apportioned on an appropriate basis e.g. floor areas, per capita or estimated usage as set out in the notes to the accounts.

Tangible fixed assets

Depreciation is provided at the following annual rates in order to write off each asset over its estimated useful life.

Short leasehold	- 2% on cost
Improvements to property	- 15% on cost
Fixtures and fittings	- at varying rates on cost

Tangible fixed assets are stated at historical cost less accumulated depreciation and any accumulated impairment losses. Historical cost includes expenditure that is directly attributable to bringing the asset to the location and condition necessary for it to be capable of operating in the manner intended by management.

Stocks

Stocks are valued at the lower of cost and net realisable value, after making due allowance for obsolete and slow moving items.

Taxation

The charity is exempt from corporation tax on its charitable activities.

Fund accounting

Unrestricted funds can be used in accordance with the charitable objectives at the discretion of the trustees.

Restricted funds can only be used for particular restricted purposes within the objects of the charity. Restrictions arise when specified by the donor or when funds are raised for particular restricted purposes.

Designated funds are Unrestricted funds earmarked by the Management Committee for particular purposes.

Further explanation of the nature and purpose of each fund is included in the notes to the financial statements.

Debtors

Basic financial assets, including trade and other debtors, are initially recognised at transaction price, unless the arrangement constitutes a financing transaction, where the transaction is measured at the present value of the future receipts discounted at a market rate of interest. Such assets are subsequently carried at amortised cost using the effective interest method, less any impairment.

FREIGHTLINERS FARM LIMITED

NOTES TO THE FINANCIAL STATEMENTS - continued FOR THE YEAR ENDED 30 SEPTEMBER 2022

1. ACCOUNTING POLICIES - continued

Cash and Cash Equivalents

Cash and cash equivalents are represented by cash in hand, deposits held at call with financial institutions, and other short-term highly liquid investments that mature in no more than three months from the date of acquisition and that are readily convertible to known amounts of cash with insignificant risk of change in value.

Creditors

Basic financial liabilities, including trade and other creditors, loans from third parties and loans from related parties, are initially recognised at transaction price, unless the arrangement constitutes a financing transaction, where the debt instrument is measured at the present value of the future payments discounted at a market rate of interest. Such instruments are subsequently carried at amortised cost using the effective interest method, less and impairment.

Pension costs

The charity operates a defined contribution pension scheme. Contributions payable to the charity's pension scheme are charged to the Statement of Financial Activities in the period to which they relate.

Going concern and Covid-19

Although the Pandemic had had an impact on the Farm, with easing off of lockdown, the Farm was able to carry on its business and trading activities. With the support from the local communities and government, the Board confirmed they have sufficient fundings to operate in the future.

As a result of this, the accounts have been prepared on a going concern basis.

2. GRANTS AND DONATIONS

	30.9.22	30.9.21
	£	£
Gift aid	24,985	-
Legacies	17,000	-
Grants and Donations	127,818	191,821
	<u>169,803</u>	<u>191,821</u>

FREIGHTLINERS FARM LIMITED

**NOTES TO THE FINANCIAL STATEMENTS - continued
FOR THE YEAR ENDED 30 SEPTEMBER 2022**

2. GRANTS AND DONATIONS - continued

Grants received, included in the above, are as follows:

	30.9.22	30.9.21
	£	£
Donations under £1,000	8,959	13,975
LB Islington Green Space and Leisure Division	32,000	32,000
Cripplegate Foundation	-	15,000
J&M Douglas	5,000	5,000
L Matlock	10,000	10,000
Mayor of London's Greener City Fund	3,869	7,956
LB Islington Children's Services	9,165	9,029
City Bridge Trust	10,425	41,650
Beatrix Payne	-	1,082
Coronavirus Job Retention Scheme	1,400	21,625
National Lottery Community Fund	-	25,000
In Memorial Janet Chapman	-	5,000
LocalGiving Coronavirus Support Appeal	-	4,504
LB Islington Sustain Big Clean Switch	500	-
Anonymous	40,000	-
Waitrose Community Matters	1,500	-
Robert McCallister	5,000	-
	<u>127,818</u>	<u>191,821</u>

3. INCOME FROM CHARITABLE ACTIVITIES

	30.9.22	30.9.21
Activity	£	£
Income from provision of goods and services	62,316	20,842
Charitable Activities	<u>62,316</u>	<u>20,842</u>

Grants received, included in the above, are as follows:

	30.9.22	30.9.21
	£	£
CAFE Income	5,058	-
Education Income	4,830	5,206
Other Farm Income	19,305	15,636
LBI Islington (SEND)	2,405	-
Isledon Arts	10,960	-
Riverside School	3,278	-
Southover School Partnership	16,480	-
	<u>62,316</u>	<u>20,842</u>

FREIGHTLINERS FARM LIMITED

**NOTES TO THE FINANCIAL STATEMENTS - continued
FOR THE YEAR ENDED 30 SEPTEMBER 2022**

4. RAISING FUNDS

Raising donations and legacies

	30.9.22	30.9.21
	£	£
Fundraising Costs	96	422
	<u> </u>	<u> </u>

5. CHARITABLE ACTIVITIES COSTS

	Direct Costs £	Support costs (see note 6) £	Totals £
Community Support	58,466	26,329	84,795
Education	53,421	26,658	80,079
Environment	32,061	15,955	48,016
City farming and visitor services	19,040	2,799	21,839
	<u>162,988</u>	<u>71,741</u>	<u>234,729</u>

6. SUPPORT COSTS

	Management £	Governance costs £	Totals £
Community Support	24,838	1,491	26,329
Education	25,449	1,209	26,658
Environment	15,955	-	15,955
City farming and visitor services	2,799	-	2,799
	<u>69,041</u>	<u>2,700</u>	<u>71,741</u>

7. NET INCOME/(EXPENDITURE)

Net income/(expenditure) is stated after charging/(crediting):

	30.9.22	30.9.21
	£	£
Depreciation - owned assets	5,039	4,525
Independent Examiners Fees	2,700	2,900
	<u> </u>	<u> </u>

FREIGHTLINERS FARM LIMITED

**NOTES TO THE FINANCIAL STATEMENTS - continued
FOR THE YEAR ENDED 30 SEPTEMBER 2022**

8. TRUSTEES' REMUNERATION AND BENEFITS

There were no trustees' remuneration or other benefits for the year ended 30 September 2022 nor for the year ended 30 September 2021.

Trustees' expenses

There were no trustees' expenses paid for the year ended 30 September 2022 nor for the year ended 30 September 2021.

9. STAFF COSTS

	30.9.22	30.9.21
	£	£
Wages and salaries	161,199	154,323
	<u>161,199</u>	<u>154,323</u>

Staff costs also included training expenses of £1,673 (2021: £246) incurred in the year.

The average monthly number of employees during the year was as follows:

	30.9.22	30.9.21
Engaged on Charitable Activities	5	5
Engaged on administration and management	1	1
	<u>6</u>	<u>6</u>

No employees received emoluments in excess of £60,000.

10. COMPARATIVES FOR THE STATEMENT OF FINANCIAL ACTIVITIES FOR 30 SEPT 2021

	Unrestricted fund £	Restricted fund £	Total funds £
INCOME AND ENDOWMENTS FROM			
Grants and Donations	93,186	98,635	191,821
Charitable activities			
Charitable Activities	20,842	-	20,842
Total	<u>114,028</u>	<u>98,635</u>	<u>212,663</u>
EXPENDITURE ON			
Raising funds	326	96	422
Charitable activities			
Community Support	24,806	43,595	68,401
Education	34,401	35,292	69,693

FREIGHTLINERS FARM LIMITED

**NOTES TO THE FINANCIAL STATEMENTS - continued
FOR THE YEAR ENDED 30 SEPTEMBER 2022**

10. COMPARATIVES FOR THE STATEMENT OF FINANCIAL ACTIVITIES FOR 30 SEPT 2021 - continued

	Unrestricted fund £	Restricted fund £	Total funds £
Environment	25,108	27,124	52,232
City farming and visitor services	20,668	3,607	24,275
Total	<u>105,309</u>	<u>109,714</u>	<u>215,023</u>
NET INCOME/(EXPENDITURE)	8,719	(11,079)	(2,360)
Transfers between funds	<u>(6,565)</u>	<u>6,565</u>	<u>-</u>
Net movement in funds	2,154	(4,514)	(2,360)
RECONCILIATION OF FUNDS			
Total funds brought forward	<u>44,099</u>	<u>91,678</u>	<u>135,777</u>
TOTAL FUNDS CARRIED FORWARD	<u><u>46,253</u></u>	<u><u>87,164</u></u>	<u><u>133,417</u></u>

11. KEY MANAGEMENT PERSONNEL

Key Management Personnel is considered to be the CEO and the Board of Trustees. Her gross remuneration was £35,042 for the year ended 30th September 2022. (30th September 2021 - £33,686)

12. TANGIBLE FIXED ASSETS

	Short leasehold £	Improvements to property £	Fixtures and fittings £	Totals £
COST				
At 1 October 2021	95,922	-	65,138	161,060
Additions	<u>-</u>	<u>3,428</u>	<u>-</u>	<u>3,428</u>
At 30 September 2022	<u>95,922</u>	<u>3,428</u>	<u>65,138</u>	<u>164,488</u>
DEPRECIATION				
At 1 October 2021	44,670	-	35,183	79,853
Charge for year	<u>1,918</u>	<u>514</u>	<u>2,607</u>	<u>5,039</u>
At 30 September 2022	<u>46,588</u>	<u>514</u>	<u>37,790</u>	<u>84,892</u>
NET BOOK VALUE				
At 30 September 2022	<u><u>49,334</u></u>	<u><u>2,914</u></u>	<u><u>27,348</u></u>	<u><u>79,596</u></u>
At 30 September 2021	<u><u>51,252</u></u>	<u><u>-</u></u>	<u><u>29,955</u></u>	<u><u>81,207</u></u>

FREIGHTLINERS FARM LIMITED

**NOTES TO THE FINANCIAL STATEMENTS - continued
FOR THE YEAR ENDED 30 SEPTEMBER 2022**

13. STOCKS		30.9.22	30.9.21
		£	£
Finished goods		-	330
		<u> </u>	<u> </u>
14. DEBTORS: AMOUNTS FALLING DUE WITHIN ONE YEAR		30.9.22	30.9.21
		£	£
Trade debtors		2,482	15,593
Prepayments and accrued income		20,613	4,445
Accruals		4,372	-
		<u> </u>	<u> </u>
		27,467	20,038
		<u> </u>	<u> </u>
15. CREDITORS: AMOUNTS FALLING DUE WITHIN ONE YEAR		30.9.22	30.9.21
		£	£
Trade creditors		4,285	5,722
Social security and other taxes		5,690	8,596
Other creditors		683	2,160
Accrued expenses		2,700	5,060
		<u> </u>	<u> </u>
		13,358	21,538
		<u> </u>	<u> </u>
16. ANALYSIS OF NET ASSETS BETWEEN FUNDS		30.9.22	30.9.21
	Unrestricted	Restricted	Total
	fund	fund	funds
	£	£	£
Fixed assets	-	79,596	79,596
Current assets	61,281	3,192	64,473
Current liabilities	(12,167)	(1,191)	(13,358)
	<u> </u>	<u> </u>	<u> </u>
	49,114	81,597	130,711
	<u> </u>	<u> </u>	<u> </u>
			133,417
			<u> </u>

FREIGHTLINERS FARM LIMITED

**NOTES TO THE FINANCIAL STATEMENTS - continued
FOR THE YEAR ENDED 30 SEPTEMBER 2022**

17. MOVEMENT IN FUNDS

**Analysis of Restricted Reserves carried forward as at 30th
September 2022**

	30.9.2022	30.9.2021
	£	£
City Bridge Trust	-	818
Cripplegate Trust	-	3,797
LBI Children Services	1	(883)
LBI Local Initiatives	2,000	2,000
Mercers Trust	-	225
	<hr/>	<hr/>
Total Revenue Restricted Funds	2,001	5,957
	<hr/>	<hr/>
Fixed Asset Fund (See note 12)	79,596	81,207
	<hr/>	<hr/>
Restricted Funds carried forward - 30th Sept 2022	81,597	87,164

18. RELATED PARTY DISCLOSURES

During the year, the Farm had financial transactions of £3,100 (30th September 2021: Nil) with London City Farms and Community Gardens Association, whose trustee is also the Chief Executive Officer of the Farm.

FREIGHTLINERS FARM LIMITED

**DETAILED STATEMENT OF FINANCIAL ACTIVITIES
FOR THE YEAR ENDED 30 SEPTEMBER 2022**

	30.9.22	30.9.21
	£	£
INCOME AND ENDOWMENTS		
Grants and Donations		
Gift aid	24,985	-
Legacies	17,000	-
Grants and Donations	127,818	191,821
	<u>169,803</u>	<u>191,821</u>
Charitable activities		
Income from provision of goods and services	62,316	20,842
	<u>232,119</u>	<u>212,663</u>
EXPENDITURE		
Raising donations and legacies		
Fundraising Costs	96	422
Charitable activities		
Salaries	134,198	114,009
COG for Trading	4,180	2,010
Premises Costs	145	5,011
General Admin	211	403
Other Support Costs	24,254	19,964
	<u>162,988</u>	<u>141,397</u>
Support costs		
Management		
Wages	27,001	40,314
Premises Costs	21,191	13,222
Insurance	2,765	560
Professional Fees	3,825	2,173
Other Support Costs	14,259	14,035
	<u>69,041</u>	<u>70,304</u>
Governance costs		
Independent Examiners Fees	2,700	2,900
	<u>234,825</u>	<u>215,023</u>
Total resources expended		
	<u>234,825</u>	<u>215,023</u>
Net expenditure	<u>(2,706)</u>	<u>(2,360)</u>

This page does not form part of the statutory financial statements

FREIGHTLINERS FARM LIMITED

England & Wales - Charity number 1014216

Accounts

REGISTERED COMPANY NUMBER: 02740034 (England and Wales)
REGISTERED CHARITY NUMBER: 1014216

**REPORT OF THE TRUSTEES AND
FINANCIAL STATEMENTS FOR THE YEAR ENDED 30 SEPTEMBER 2021
FOR
FREIGHTLINERS FARM LIMITED
(A COMPANY LIMITED BY GUARANTEE)**

**Prestons & Jacksons Partnership LLP
364 - 368 Cranbrook Road
Ilford
Essex
IG2 6HY**

FREIGHTLINERS FARM LIMITED

CONTENTS OF THE FINANCIAL STATEMENTS FOR THE YEAR ENDED 30 SEPTEMBER 2021

	Page
Report of the Trustees	1 to 10
Independent Examiner's Report	11
Statement of Financial Activities	12
Balance Sheet	13 to 14
Notes to the Financial Statements	15 to 25
Detailed Statement of Financial Activities	26 to 27

FREIGHTLINERS FARM LIMITED
REPORT OF THE TRUSTEES
FOR THE YEAR ENDED 30 SEPTEMBER 2021

The trustees who are also directors of the charity for the purposes of the Companies Act 2006, present their report with the financial statements of the charity for the year ended 30 September 2021. The trustees have adopted the provisions of Accounting and Reporting by Charities: Statement of Recommended Practice applicable to charities preparing their accounts in accordance with the Financial Reporting Standard applicable in the UK and Republic of Ireland (FRS 102) (effective 1 January 2019).

FREIGHTLINERS FARM LIMITED

REPORT OF THE TRUSTEES FOR THE YEAR ENDED 30 SEPTEMBER 2021

OBJECTIVES AND ACTIVITIES

Objectives and aims

A summary of the objects of the charity as set out in its governing document

The objects of the charity are:

- Improve quality of life particularly for those most in need;
- Promote community participation, education and skills development;
- Promote caring, nurturing and respect for others, the natural and built environment and all living things within the London Boroughs of Islington, Hackney, Haringey, Camden and their environs.

The charity's aims including the changes or differences it seeks to make through its activities.

The charity aims to achieve the above objectives by means of:

- associating with the local authorities, voluntary organisations and inhabitants in a common effort to provide facilities in the interest of social welfare for recreation and other leisure time occupations;
- providing learning opportunities covering agriculture, horticulture, home crafts, country life, the natural environment and related subjects;
- educating people in the care and consideration for all animals particularly animals in need of care and protection. For these purposes to care for and exhibit animals in common agricultural and domestic use and rare breeds of farm animals so that the public will have a greater awareness of and appreciation for such animals;
- providing a rural type outdoor environment in the inner city which enables urban people to access a little bit of the countryside;
- demonstrating social, economic and environmental sustainability through modeling of practices, use of technology, fair access, enterprise and involvement.

In setting our objectives and planning our activities, Trustees have given careful consideration to the Charity Commission's guidance on public benefit.

Summary of the main activities of the charity in relation to its objects

The diverse range of activities which are carried out by the farm include project work, commissioned services, social enterprise and ongoing development work. In pursuit of its stated objectives, the charity's activities can be classified according to the aims of individual pieces of work as follows:

- Community support by providing facilities in the interest of social welfare for therapy, recreation and other leisure time occupations;
- Education by providing training and learning opportunities;
- Environmental awareness by providing facilities to improve appreciation, consideration and care for all animals and their habitats;
- Social enterprise by providing unique opportunities for local people, developing educational food programmes and supplying local goods and services in an accessible manner and at a reasonable cost.

FREIGHTLINERS FARM LIMITED

REPORT OF THE TRUSTEES FOR THE YEAR ENDED 30 SEPTEMBER 2021

ACHIEVEMENT AND PERFORMANCE

Charitable activities

During a year of regulation and measures to reduce the transmission of Covid-19 the farm provided an important outdoor space for people to get out of the house. We were able to continue to deliver a broad base of farm services working in partnership with colleagues from London's City Farms, Islington voluntary organisations, Islington Council and the GLA on safe operations, reaching those most in need and the ever-changing impact of the pandemic.

This year the farm's role as a refuge and safe haven was even more significant providing space for people to spend time individually in nature, together as households or when regulations allowed with small numbers of colleagues, friends, and family. When schools closed for the third time in January 2021 we put our learning opportunities online and outside the gate to help parents and teachers provide exciting education at home and children and young people feel supported within the wider community.

Day to day life on the farm continued with some sad goodbyes to much loved veteran animals and we welcomed new sheep, ducks and geese expanding our heritage breeds. Whilst requirements for social distancing created some challenges for the staff and volunteer team, new garden areas flourished and hard-landscaping and planting to create the Natural Workshop Space and Woodland Path were completed. Throughout the year gardens were enjoyed by farm visitors of all ages and backgrounds.

Access to the outdoors, nature and play

Between October 2020 and September 2021, there were two periods of Covid-19 mandated full farm closures (November 2020 and January to March 2021). Notwithstanding this interruption, the farm welcomed 4,100 adults and 3,500 children to visit using scheduled booking slots and in accordance with social distancing restrictions. Opening times were adjusted by including evenings during the summer to deliver maximum public opening hours whilst maintaining safe working spaces for volunteers, staff and education and therapeutic group participants. Staffed entry ensured sufficient space for each family/ bubble or group to access a one way walk around the farm. Families were able to enjoy the space of the farm without worry or negotiation about close contact with others.

"We went to the zoo but I had to leave as it was very busy and I was scared about how close people were getting - here I'm able to relax and enjoy the visit" - Mum with three young children.

Restrictions on travel, closure of services and activities and risks of contact with others especially in indoor places meant the farm was an especially important place for local families particularly those with little space at home. Families said that getting outside and doing something different helped them to cope with the challenges of Covid-19 regulations and maintain their mental health. For young children going to see the animals for real rather than just on a screen, was an exciting experience and it provided a great resource for families learning together supporting home education.

"We walked past to see the chickens every day, it gave us something to look forwards to and somewhere to go and now we can go round and see all the animals, it is such a special place for us" - Mum with young toddler

Visitors also highlighted that it was good to engage with the farm staff and volunteer team and to feel connected to their communities. Some parents were worried that children had not met many people outside their immediate families over the previous year and as a result were unsure of other people and how to interact with them. The farm provided a familiar place to go close by, with friendly people which supported children's social development and reduced the isolating impact of the Covid-19 pandemic.

FREIGHTLINERS FARM LIMITED

REPORT OF THE TRUSTEES FOR THE YEAR ENDED 30 SEPTEMBER 2021

School visits were still largely curtailed by measures to reduce transmission of Covid-19 during this year however the farm was able to offer very local schools opportunities to visit the farm with small groups of children. Staff also facilitated 20 community group farm visits and animal outreach to 4 community centres and play-schemes. A total of 277 people took part in these supported group activities including families from women's refuges, key workers' children and vulnerable children at playschemes, schools, day centres, refugee and homeless adult support groups and local youth groups. Group sessions supported physical and mental health, learning and social inclusion.

"A huge thank you for the two trips which we had to the farm this week. The children have all been so excited for this trip and were so thrilled to see all of the animals. It was really great for the children who have been largely stuck at home this year to be able to visit the farm and the mums have been incredibly grateful for this trip." Refugee Support Worker

Over the 6-week summer holidays the farm also worked in partnership with Bright Start Islington to provide socially distanced farm access for families in need with early years aged children. 12 families a week joined family support workers on a farm visit to see the animals, gardens and take part in a 'have a go' craft or gardening activity with farm staff. Parents were very happy to be able to meet support workers face to face and enjoy a fun afternoon with their children.

Children and young people's involvement

19 young people took part in farm activities as part of London Borough of Islington's Recreation and Adventure Programme which was adapted to enable young people to participate individually or in small groups with social distancing. The programme included:

- One off farm taster sessions introducing gardening, animal care, construction and crafts.
- Weekly supported young people's volunteering / young city farmers activities.
- Work experience placements supporting college and university programmes.

Four of these young people were joined by 15 more local young people for two week-long courses in City Farming as part of 'Summerversity and Launchpad' a borough wide initiative to provide young people with free positive and learning activities over the summer holidays. Young people took part in animal care, cafe training and running a cake stall, construction, heritage crafts and an introduction to gardening. The launchpad programme had an emphasis on participation in a work-based environment supporting young people in entry to work and volunteering. These courses reached new young people from across the borough introducing them to the farm with seven young people moving on to further young city farmers activities.

"The farm is sort of hidden away and when you get here it's got all these animals and it's like being in the countryside. For people in the city that's different" - **Young Volunteer**

Through these programmes young people gained practical skills in animal care, construction, garden design, knowledge of plants, animals and the environment and were encouraged to be creative and proactive in their community. Young people were challenged to overcome barriers to learning and personal development and to work as a team and independently in pursuit of shared goals. They gained key skills for life and employment including communication, leadership and resilience.

FREIGHTLINERS FARM LIMITED

REPORT OF THE TRUSTEES FOR THE YEAR ENDED 30 SEPTEMBER 2021

"I think the farm has really been a life changing experience for them. Doing things like making cement, handling cows and pruning trees which they didn't think they could do but could has given them confidence to go out and do things in their life" - **Parent of Young Volunteer**

Hands on learning courses for schools were suspended for over a year until Spring 2021 when two groups of eight young people and their one to one support from Southover Schools Partnership began a new bespoke one day a week education and therapeutic farming programme. Pupils took part in practical and vocational learning alongside animal assisted therapy, crafts and gardening. Animals provide a great incentive for pupils to learn and to complete the tasks allocated to them successfully as well as having a direct calming and therapeutic impact. Focusing on achievement, the participants gain confidence, self-esteem and engage better with learning. The programme was received well by the students and school staff and is continuing for the 2021 -22 academic year. Pupils will progress to a level 1 animal care qualification and more in depth participation in farm site developments.

"Thank you for providing our students with such a rich and varied experience during their sessions; I know how much they value their time at Freightliners" - **Head Teacher**

As a result of participation in young farmers activities:

- 1 young person progressed to veterinary college.
- 2 young people progressed to a higher level of study in animal care and management.
- 3 young people gained accreditation for their learning / volunteering on the farm through Duke of Edinburgh Awards.
- All young people gained subject based skills, knowledge and transferable and key skills including teamwork, self-management and communicating with a range of different people.
- All young people were observed to have increased confidence.

"I wanted to let you know that I got an offer from Liverpool vet school, so I wanted to say a massive thank you to you and everyone at the farm. All your help over the past year has been amazing and I have really appreciated it. The work experience you gave me was invaluable. I had such an amazing time during my volunteering at the farm." - **Launchpad course participant and Volunteer**

The farm's ethos is to encourage and facilitate young people to be involved in all aspects of farm life and to contribute to co-producing a city farm for the community. This year they have helped to grow and supply plants for the community; manage visitor entry to the farm and maintain Covid-19 records; design, construct, plant and landscape new farm developments which contributed to lasting physical changes to the farm.

" I'm looking forward to coming back when my little sister is old enough and saying I helped build that" - **Summerversity Participant**

FREIGHTLINERS FARM LIMITED

REPORT OF THE TRUSTEES FOR THE YEAR ENDED 30 SEPTEMBER 2021

Inclusive volunteering and farming activities

Maintaining practical volunteering throughout the pandemic has been a challenge particularly as many of our volunteers are more vulnerable to Covid-19 because of age, learning disabilities or physical and mental health issues. This year 32 adults including 18 people with a disability (including long term mental and physical health issues) and 5 people aged over 60 took part in regular farm volunteering alongside 18 young people. All the farm's regular participants who attended at the start of the pandemic were supported to stay in touch throughout the year, to have hands on interactions with the animals and gardens and to contribute to running and developing the farm. Additional staff time was required to provide support and reassurance for those who were anxious; provide guidance on safety measures for participants and to engage in online and therapeutic activity with those unable to carry out their usual sessions.

"I can walk to the farm. There is space when I am here, and I know that the Covid-19 risks are taken seriously I daren't go out anywhere else at the moment. It causes me too much anxiety." - **Volunteer**

The farm's capacity to meet the increased need was supported by our funders' flexibility in response to the pandemic and emergency funds from the City Bridge Trust, Local Giving Appeal matching and the National Lottery Community Fund. Participation in farming and gardening activities increased people's physical activity levels, provided opportunities to gain and practice skills and spend time in a tranquil outdoor space, and for some participants was the only face to face interaction they had each week.

"I'm so happy to come to the farm I missed the animals and the people. Everything is online now, and I don't like being on Zoom" - **Volunteer**

During the summer our regular volunteers were joined by teams from locally based companies who helped to provide additional person power (around 60 people for 7 hours each) to get through some of the heavier farm tasks. We are very grateful for the support of the companies able to support the farm this year and hope to welcome more teams again in 2022 when systems for managing Covid-19 risks are more established. Corporate team volunteers working alongside our regular volunteers and young people also creates connections between individuals who would not meet otherwise, it increases understanding of others' lives and opens up new possibilities for the farm and the individuals.

"We all had a great time at the farm - very exhausted by the end of the day but also could see that we'd definitely helped out." - **Corporate Team Member**

Site developments and improvement

Over the year we made significant progress with site developments which increase opportunities for access to nature, the outdoors, gardens and animals and maximise access to the benefits to wellbeing and learning that a city farm provides. A Greener City grant from the Mayor of London provided capital funds to create a circular farm and gardens walk through a disused and shaded part of the gardens incorporating playful areas, a shaded seating space and wildlife planting. The initial design and project timeline was adapted slightly for Covid-19 safety with segregated areas for volunteers to work during public opening times and build of a safe one-way route around the farm for visitors prioritised.

FREIGHTLINERS FARM LIMITED

REPORT OF THE TRUSTEES FOR THE YEAR ENDED 30 SEPTEMBER 2021

The resulting area has already been well used and admired by visitors since its completion in August 2021 with families enjoying the new space, discovering woodland plants and trees, sitting on the pebble beach and searching for frogs, snails and other minibeasts. Local people visiting regularly were pleased to see the farm site continue to improve and to be able to access new spaces they couldn't reach before.

- "I found a little frog" - **Young child to the staff member at the gate in Spring**

- "The little frogs are all big now" - **Child to member of staff in the Autumn**

The last raised beds and pathways in the botanical front garden were constructed using more recycled materials including reclaimed Cotswold and York stone, metal work from old animal pens and old mortar. Farm staff also worked with young people on the very technical cast concrete pond ready to be filled and planted in the Spring.

The Farm Developments Manager and supporting staff ensured that there were opportunities and activities for all volunteers, regular group participants and young farmers to contribute to the new areas. Despite the limitations on physically coming together because of the risks of the pandemic, members of the farm community were able to connect through participation in and sharing of the resulting benefits of renovation of the site.

"It's been great to see the work that's been done, every time we visit something is new and improved" - **Farm Visitor.**

Rare breeds and other animals

This year we were joined by two new Leicester Longwool sheep. The Leicester Longwool is currently one of the priority British rare breed sheep and we are hoping to breed from our two new girls to support its survival. We are also planning to use their fabulous lustre wool to process for spinning and making wool products.

"Wow look at how shiny their fleece is you can see why they were so valuable when we only had natural fibres for clothes. We're pleased to be able to support the RBST Love a longwool campaign. Natural fibres like wool may be an important material to reduce our reliance on plastics" **Farm Manager at shearing time**

Our old Embden goose was joined by a young male Pilgrim gander. Next year we will see if our goose will hatch some Pilgrim goslings so that we can establish a breeding group. The geese were also joined by four new runner ducks so there has been a lot of excitement in the duck pond.

"It's exciting to have new ducks and geese I'm looking forwards to seeing the ducklings next year. **Young Volunteer**

Fundraising and social enterprise

The continued impact of the Covid-19 restrictions on the farm's operations and finances mean that the need to raise funds was even more crucial. But, like other aspects of running the farm, fundraising was also deeply affected by the pandemic. Despite this, we were able to raise funds through new and traditional methods.

FREIGHTLINERS FARM LIMITED

REPORT OF THE TRUSTEES FOR THE YEAR ENDED 30 SEPTEMBER 2021

Fundraising activities included participating in the Coronavirus Localgiving Match Funding campaign, which raised over £2500. This amount was then matched, so our fundraising efforts were doubled. Trustee, Seigo, took part in The Captain Tom 100 Challenge. He cycled 100km dressed as a cow in order to raise much needed funds for the farm.

We were pleased to receive a major Covid-19 support grant from the National Lottery Community Fund, which helped the farm to open and deliver education and therapeutic activities through the winter. We also welcomed a grant from Islington Giving's Supporting Families Programme for activities to reach local families. These included outreach, special farm openings and providing family learning activities. The government furlough scheme enabled us to retain and support staff through the pandemic related closures and reduced activity.

We further built on the successes of the community plant sales with bulbs and bedding in autumn, spring and summer perennials and exotics, annual flowers and vegetable plants. We also ran a virtual winter fair with local crafts people who donated a proportion of sales. And our annual Christmas tree sales shop was a great success.

We are so grateful for the ongoing support of our friends and local community - including major funders City Bridge Trust, Islington Council, and Mayor of London. Without their donations, support and fundraising efforts the farm would not have survived through the pandemic.

FINANCIAL REVIEW

Financial position

The Statement of Financial Activities shows a deficit of £2,360 (2020: deficit £16,473).

Fund balances at the year end stood at £133,417 (2020: £135,777) of which £46,251 (2020: £44,099) was unrestricted and £87,166 (2020: £91,670) was restricted.

Reserves policy

The management committee has established a policy whereby the restricted reserves equate to the net book value of certain company tangible fixed assets and that all other reserves are classified as unrestricted reserves. The Management Committee maintains the ambition to establish reserves of 3-6 months running costs, as recommended by the Charity Commission however the Covid-19 pandemic resulted in a depletion of reserves. The Management Committee is pleased that the farm has increased its unrestricted funds balance during the year but given the need for continuity of service continues to manage these funds to ensure that the farm is an active, developing and vibrant organisation which meets the needs of its beneficiaries now and in the future.

Availability and adequacy of assets of each of the funds

The Management Committee is satisfied that the charity's assets in each fund are available and adequate to fulfill its obligations in respect of each fund.

FREIGHTLINERS FARM LIMITED

REPORT OF THE TRUSTEES FOR THE YEAR ENDED 30 SEPTEMBER 2021

FUTURE PLANS AND DEVELOPMENTS

In the coming year we are looking to build on the successes of the past year and look forwards to welcoming people back to the farm with a reduced need for Covid-19 measures. Our new regular school sessions and individual alternative provision placements are set to continue and expand, Thornhill School will be returning for their enrichment sessions and we hope that our regular school visit programme will be able to return in summer 2022. We are very aware of the increased need in our community with children and young people missing out on valuable life and learning experiences, many people experiencing grief and loss, a divide in people's experiences through the pandemic and many people and businesses feeling the economic strain. The farm staff, trustees and volunteers will seek to ensure that the farm continues to provide the space of refuge it has been during the pandemic for everyone and to utilise its resources to meet the needs in our community.

The farm is an experienced and established member of the city farming movement. We are passionate supporters of the value city farms and gardens have in society and in support of those who are vulnerable and disadvantaged. In a fast changing world we recognise the importance of adapting to new circumstances, learning and changing to meet the needs of our beneficiaries. London has a strong and dedicated network of farms and gardens which are skilled, innovative and experienced in their role. We want to ensure that we continue to build on this strength through partnership work and knowledge and skills sharing across city farms in London and the UK as a whole and to ensure that Freightliners is the best possible city farm for our local community.

STRUCTURE, GOVERNANCE AND MANAGEMENT

Nature of the Governing Document and constitution of the charity

The charity is controlled by its governing document, a deed of trust, and constitutes a limited company, limited by guarantee, as defined by the Companies Act 2006.

The organisation is a charitable company limited by guarantee, incorporated on 14th August 1992. The company was established under a Memorandum of Association which established the objects and powers of the charitable company and is governed under its Articles of Association. In the event of the company being wound up, each member is required to contribute an amount not exceeding £1.

The organisational structure of the charity and how decisions are made.

Freightliners Farm Limited has a Management Committee who meet at least five times a year and is responsible for the strategic direction and policy of the charity. During this financial year, the Management Committee met more frequently (using remote video conferencing) to provide additional oversight and guidance and to ensure that the welfare of staff was monitored. At present the Committee has five members, from a variety of professional backgrounds relevant to the work of the charity including people from the local area. A finance sub-committee consisting of the Chief Executive, Chair and Treasurer are delegated to scrutinise routine financial management and report to the Committee.

The major risks to which the charity is exposed and reviews and systems mitigate

The trustees have a duty to identify and review the risks to which the charity is exposed and to ensure appropriate controls are in place to provide reasonable assurance against fraud and error.

The Management Committee has conducted its own review of the major risks to which the charity is exposed and has established systems to mitigate those risks. Significant external risks to funding have led to the development of a strategic plan which will allow for the diversification of funding and activities. Internal risks are minimised by the implementation of procedures for authorisation of all transactions and projects and to ensure consistent quality of delivery for all operational aspects of the charitable company. These procedures are periodically reviewed to ensure that they still meet the needs of the charity.

FREIGHTLINERS FARM LIMITED

**REPORT OF THE TRUSTEES
FOR THE YEAR ENDED 30 SEPTEMBER 2021**

REFERENCE AND ADMINISTRATIVE DETAILS

Registered Company number

02740034 (England and Wales)

Registered Charity number

1014216

Registered office

Sheringham Road
N7 8PF

Trustees

O.S Robinson

N.McMinn

M.Rowe

P.MacIntyre

A. Weatherhead

Company Secretary:

E McAllister

Chief Executive Officer:

E McAllister

Independent Examiner

A. Patel BA(Hons) FCA BFP

ICAEW

Prestons & Jacksons Partnership LLP

364 - 368 Cranbrook Road

Ilford

Essex

IG2 6HY

This report has been prepared in accordance with the special provisions of Part 15 of the Companies Act 2006 relating to small companies.

Approved by order of the board of trustees on 28th June 2022 and signed on its behalf by:



Peter MacIntyre (Jun 28, 2022 12:28 GMT+1)



Neal McMinn (Jun 28, 2022 13:16 GMT+1)

Mr P MacIntyre - Trustee / Director

Mr N McMinn - Trustee / Director

**INDEPENDENT EXAMINER'S REPORT TO THE TRUSTEES OF
FREIGHTLINERS FARM LIMITED**

Independent examiner's report to the trustees of Freightliners Farm Limited ('the Company')

I report to the charity trustees on my examination of the accounts of the Company for the year ended 30 September 2021.

Responsibilities and basis of report

As the charity's trustees of the Company (and also its directors for the purposes of company law) you are responsible for the preparation of the accounts in accordance with the requirements of the Companies Act 2006 ('the 2006 Act').

Having satisfied myself that the accounts of the Company are not required to be audited under Part 16 of the 2006 Act and are eligible for independent examination, I report in respect of my examination of your charity's accounts as carried out under section 145 of the Charities Act 2011 ('the 2011 Act'). In carrying out my examination I have followed the Directions given by the Charity Commission under section 145(5) (b) of the 2011 Act.

Independent examiner's statement

I have completed my examination. I confirm that no matters have come to my attention in connection with the examination giving me cause to believe:

1. accounting records were not kept in respect of the Company as required by section 386 of the 2006 Act; or
2. the accounts do not accord with those records; or
3. the accounts do not comply with the accounting requirements of section 396 of the 2006 Act other than any requirement that the accounts give a true and fair view which is not a matter considered as part of an independent examination; or
4. the accounts have not been prepared in accordance with the methods and principles of the Statement of Recommended Practice for accounting and reporting by charities (applicable to charities preparing their accounts in accordance with the Financial Reporting Standard applicable in the UK and Republic of Ireland (FRS 102)).

I have no concerns and have come across no other matters in connection with the examination to which attention should be drawn in this report in order to enable a proper understanding of the accounts to be reached.

A. PATEL

A. Patel BA(Hons) FCA BFP
ICAEW
Prestons & Jacksons Partnership LLP
364 - 368 Cranbrook Road
Ilford
Essex
IG2 6HY

Date: *28/6/22*

FREIGHTLINERS FARM LIMITED

**STATEMENT OF FINANCIAL ACTIVITIES
(INCORPORATING AN INCOME AND EXPENDITURE ACCOUNT)
FOR THE YEAR ENDED 30 SEPTEMBER 2021**

	Notes	Unrestricted fund £	Restricted fund £	30.9.21 Total funds £	30.9.20 Total funds £
INCOME AND ENDOWMENTS FROM					
Grants and Donations	2	93,186	98,635	191,821	181,759
Charitable activities	4				
Charitable Activities		20,842	-	20,842	32,260
Other funding activities	3	-	-	-	1,213
Total		114,028	98,635	212,663	215,232
EXPENDITURE ON					
Raising funds	5	326	96	422	3,023
Charitable activities	6				
Community Support		24,806	43,595	68,401	65,800
Education		34,401	35,292	69,693	46,736
Environment		25,108	27,124	52,232	39,486
City farming and visitor services		20,668	3,607	24,275	76,660
Total		105,309	109,714	215,023	231,705
NET INCOME/(EXPENDITURE)		8,719	(11,079)	(2,360)	(16,473)
Transfers between funds	18	(6,565)	6,565	-	-
Net movement in funds		2,154	(4,514)	(2,360)	(16,473)
RECONCILIATION OF FUNDS					
Total funds brought forward		44,099	91,678	135,777	152,250
TOTAL FUNDS CARRIED FORWARD		46,253	87,164	133,417	135,777

The notes form part of these financial statements

FREIGHTLINERS FARM LIMITED

**BALANCE SHEET
30 SEPTEMBER 2021**

	Notes	30.9.21 £	30.9.20 £
FIXED ASSETS			
Tangible assets	13	81,207	85,732
CURRENT ASSETS			
Stocks	14	330	330
Debtors	15	20,038	30,246
Cash at bank and in hand		53,380	30,698
		<u>73,748</u>	<u>61,274</u>
CREDITORS			
Amounts falling due within one year	16	(21,538)	(11,229)
NET CURRENT ASSETS		<u>52,210</u>	<u>50,045</u>
TOTAL ASSETS LESS CURRENT LIABILITIES		<u>133,417</u>	<u>135,777</u>
NET ASSETS		<u>133,417</u>	<u>135,777</u>
FUNDS	18		
Unrestricted funds:			
General fund		46,251	44,099
Restricted funds:			
Restricted Funds		87,166	91,678
TOTAL FUNDS		<u>133,417</u>	<u>135,777</u>

The charitable company is entitled to exemption from audit under Section 477 of the Companies Act 2006 for the year ended 30 September 2021.

The members have not required the company to obtain an audit of its financial statements for the year ended 30 September 2021 in accordance with Section 476 of the Companies Act 2006.

The notes form part of these financial statements

FREIGHTLINERS FARM LIMITED

**BALANCE SHEET - continued
30 SEPTEMBER 2021**

The trustees acknowledge their responsibilities for

- (a) ensuring that the charitable company keeps accounting records that comply with Sections 386 and 387 of the Companies Act 2006 and
- (b) preparing financial statements which give a true and fair view of the state of affairs of the charitable company as at the end of each financial year and of its surplus or deficit for each financial year in accordance with the requirements of Sections 394 and 395 and which otherwise comply with the requirements of the Companies Act 2006 relating to financial statements, so far as applicable to the charitable company.

These financial statements have been prepared in accordance with the provisions applicable to charitable companies subject to the small companies regime.

The financial statements were approved by the Board of Trustees and authorised for issue on 28th June 2022 and were signed on its behalf by:



Peter MacIntyre (Jun 28, 2022 12:28 GMT+1)

.....
Mr P MacIntyre - Trustee / Director



Neal McMinn (Jun 28, 2022 13:16 GMT+1)

.....
Mr N McMinn - Trustee / Director

The notes form part of these financial statements

FREIGHTLINERS FARM LIMITED

NOTES TO THE FINANCIAL STATEMENTS FOR THE YEAR ENDED 30 SEPTEMBER 2021

1. ACCOUNTING POLICIES

Basis of preparing the financial statements

The financial statements of the charitable company, which is a public benefit entity under FRS 102, have been prepared in accordance with the Charities SORP (FRS 102) 'Accounting and Reporting by Charities: Statement of Recommended Practice applicable to charities preparing their accounts in accordance with the Financial Reporting Standard applicable in the UK and Republic of Ireland (FRS 102) (effective 1 January 2019)', Financial Reporting Standard 102 'The Financial Reporting Standard applicable in the UK and Republic of Ireland' and the Companies Act 2006. The financial statements have been prepared under the historical cost convention.

Income

All income is recognised in the Statement of Financial Activities once the charity has entitlement to the funds, it is probable that the income will be received and the amount can be measured reliably.

Voluntary income is received by way of grants, donations and gifts and is included in full in the Statement of Financial Activities when receivable. Grants, where entitlement is not conditional on the delivery of a specific performance by the charity, are recognised when the charity becomes unconditionally entitled to the grant.

Donated services and facilities are included at the value to the charity where this can be quantified. The value of services provided by volunteers has not been included in these accounts.

Investment income is included when receivable.

Incoming resources from charitable trading activities are accounted for when earned.

Incoming resources from grants, where related to performance and specific deliverables, are accounted for as the charity earns the right to consideration by its performance.

Expenditure and irrecoverable vat

Liabilities are recognised as expenditure as soon as there is a legal or constructive obligation committing the charity to that expenditure, it is probable that a transfer of economic benefits will be required in settlement and the amount of the obligation can be measured reliably. Expenditure is accounted for on an accruals basis and has been classified under headings that aggregate all cost related to the category. Where costs cannot be directly attributed to particular headings they have been allocated to activities on a basis consistent with the use of resources.

Expenditure is recognised on an accrual basis as a liability is incurred. Expenditure includes any VAT which cannot be fully recovered, and is reported as part of the expenditure to which it relates:

Costs of generating funds comprise the costs associated with attracting voluntary income and the costs of trading for fundraising purposes including the charity's shop.

Charitable expenditure comprises those costs incurred by the charity in the delivery of its activities and services for its beneficiaries. It includes both costs that can be allocated directly to such activities and those costs of an indirect nature necessary to support them.

FREIGHTLINERS FARM LIMITED

NOTES TO THE FINANCIAL STATEMENTS - continued FOR THE YEAR ENDED 30 SEPTEMBER 2021

1. ACCOUNTING POLICIES - continued

Expenditure and irrecoverable vat

Governance costs include those costs associated with meeting the constitutional and statutory requirements of the charity and include the audit fees and costs linked to the strategic management of the charity.

All costs are allocated between the expenditure categories of the SoFA on a basis designed to reflect the use of the resource. Costs relating to a particular activity are allocated directly, others are apportioned on an appropriate basis e.g. floor areas, per capita or estimated usage as set out in the notes to the accounts.

Tangible fixed assets

Depreciation is provided at the following annual rates in order to write off each asset over its estimated useful life.

Short leasehold	- 2% on cost
Fixtures and fittings	- 15% on cost

Tangible fixed assets are stated at historical cost less accumulated depreciation and any accumulated impairment losses. Historical cost includes expenditure that is directly attributable to bringing the asset to the location and condition necessary for it to be capable of operating in the manner intended by management.

Stocks

Stocks are valued at the lower of cost and net realisable value, after making due allowance for obsolete and slow moving items.

Taxation

The charity is exempt from corporation tax on its charitable activities.

Fund accounting

Unrestricted funds can be used in accordance with the charitable objectives at the discretion of the trustees.

Restricted funds can only be used for particular restricted purposes within the objects of the charity. Restrictions arise when specified by the donor or when funds are raised for particular restricted purposes.

Designated funds are Unrestricted funds earmarked by the Management Committee for particular purposes.

Further explanation of the nature and purpose of each fund is included in the notes to the financial statements.

Debtors

Basic financial assets, including trade and other debtors, are initially recognised at transaction price, unless the arrangement constitutes a financing transaction, where the transaction is measured at the present value of the future receipts discounted at a market rate of interest. Such assets are subsequently carried at amortised cost using the effective interest method, less any impairment.

FREIGHTLINERS FARM LIMITED

NOTES TO THE FINANCIAL STATEMENTS - continued FOR THE YEAR ENDED 30 SEPTEMBER 2021

1. ACCOUNTING POLICIES - continued

Cash and Cash Equivalents

Cash and cash equivalents are represented by cash in hand, deposits held at call with financial institutions, and other short-term highly liquid investments that mature in no more than three months from the date of acquisition and that are readily convertible to known amounts of cash with insignificant risk of change in value.

Creditors

Basic financial liabilities, including trade and other creditors, loans from third parties and loans from related parties, are initially recognised at transaction price, unless the arrangement constitutes a financing transaction, where the debt instrument is measured at the present value of the future payments discounted at a market rate of interest. Such instruments are subsequently carried at amortised cost using the effective interest method, less and impairment.

Pension costs

The charity operates a defined contribution pension scheme. Contributions payable to the charity's pension scheme are charged to the Statement of Financial Activities in the period to which they relate.

Going concern and Covid-19

Although the Pandemic had had an impact on the Farm, with easing off of lockdown, the Farm was able to carry on its business and trading activities. With the support from the local communities and government, the Board confirmed they have sufficient fundings to operate in the future.

As a result of this, the accounts have been prepared on a going concern basis.

2. GRANTS AND DONATIONS

	30.9.21	30.9.20
	£	£
Gift aid	-	4,445
Grants and Donations	191,821	176,307
Other Income	-	1,007
	<u>191,821</u>	<u>181,759</u>

FREIGHTLINERS FARM LIMITED

**NOTES TO THE FINANCIAL STATEMENTS - continued
FOR THE YEAR ENDED 30 SEPTEMBER 2021**

2. GRANTS AND DONATIONS - continued

	Unrestricted	Restricted	Total	Total
	30.9.2021	30.9.2021	30.9.2021	30.9.2020
	£	£	£	£
Donations Under £1,000	13,975	-	13,975	19,468
LB Islington Green Space and Leisure Div	32,000	-	32,000	32,000
Cripplegate Foundation	-	15,000	15,000	9,774
J&M Douglas	5,000	-	5,000	5,000
L Matlock	10,000	-	10,000	10,000
Mayor of London's Greener City Fund	-	7,956	7,956	3,930
LB Islington Children's Services	-	9,029	9,029	9,029
City Bridge Trust	-	41,650	41,650	51,325
Anonymous	1,082	-	1,082	5,000
Coronavirus Job Retention Scheme	21,625	-	21,625	20,781
National Lottery Community Fund	-	25,000	25,000	-
In Memorial Janet Chapman	5,000	-	5,000	-
LocalGiving Coronavirus Support Appeal	4,504	-	4,504	-
LB Islington (Hospitality and Leisure Coronavirus Division)	-	-	-	10,000
	93,186	98,635	191,821	176,307

FREIGHTLINERS FARM LIMITED

**NOTES TO THE FINANCIAL STATEMENTS - continued
FOR THE YEAR ENDED 30 SEPTEMBER 2021**

3. OTHER FUNDING ACTIVITIES

	30.9.21	30.9.20
	£	£
Other Trading Income	-	1,213
	<u> </u>	<u> </u>

4. INCOME FROM CHARITABLE ACTIVITIES

	30.9.21	30.9.20
	£	£
Activity		
Income from provision of goods and services	20,842	32,260
Charitable Activities	<u> </u>	<u> </u>

Grants received, included in the above, are as follows:

	30.9.21	30.9.20
	£	£
CAFE Income	-	18,194
Education Income	5,206	1,848
Other Farm Income	15,636	12,218
	<u> </u>	<u> </u>
	<u>20,842</u>	<u>32,260</u>

5. RAISING FUNDS

Raising donations and legacies

	30.9.21	30.9.20
	£	£
Fundraising Costs	422	778
	<u> </u>	<u> </u>

Other trading activities

	30.9.21	30.9.20
	£	£
Bad debts	-	2,245
	<u> </u>	<u> </u>
Aggregate amounts	<u>422</u>	<u>3,023</u>

FREIGHTLINERS FARM LIMITED

**NOTES TO THE FINANCIAL STATEMENTS - continued
FOR THE YEAR ENDED 30 SEPTEMBER 2021**

6. CHARITABLE ACTIVITIES COSTS

	Direct Costs £	Support costs (see note 7) £	Totals £
Community Support	44,634	23,767	68,401
Education	45,583	24,110	69,693
Environment	34,287	17,945	52,232
City farming and visitor services	16,893	7,382	24,275
	<u>141,397</u>	<u>73,204</u>	<u>214,601</u>

7. SUPPORT COSTS

	Management £	Governance costs £	Totals £
Community Support	23,767	-	23,767
Education	21,210	2,900	24,110
Environment	17,945	-	17,945
City farming and visitor services	7,382	-	7,382
	<u>70,304</u>	<u>2,900</u>	<u>73,204</u>

8. NET INCOME/(EXPENDITURE)

Net income/(expenditure) is stated after charging/(crediting):

	30.9.21	30.9.20
	£	£
Depreciation - owned assets	4,525	4,525
Independent Examiners Fees	2,900	2,160
	<u>7,425</u>	<u>6,685</u>

FREIGHTLINERS FARM LIMITED

**NOTES TO THE FINANCIAL STATEMENTS - continued
FOR THE YEAR ENDED 30 SEPTEMBER 2021**

9. TRUSTEES' REMUNERATION AND BENEFITS

There were no trustees' remuneration or other benefits for the year ended 30 September 2021 nor for the year ended 30 September 2020.

Trustees' expenses

There were no trustees' expenses paid for the year ended 30 September 2021 nor for the year ended 30 September 2020.

10. STAFF COSTS

	30.9.21	30.9.20
	£	£
Wages and salaries	154,323	159,273
	<u>154,323</u>	<u>159,273</u>

The average monthly number of employees during the year was as follows:

	30.9.21	30.9.20
Engaged on Charitable Activities	5	5
Engaged on administration and management	1	1
	<u>6</u>	<u>6</u>

No employees received emoluments in excess of £60,000.

11. COMPARATIVES FOR THE STATEMENT OF FINANCIAL ACTIVITIES FOR 30 SEPT 2020

	Unrestricted fund £	Restricted fund £	Total funds £
INCOME AND ENDOWMENTS FROM			
Grants and Donations	86,920	94,839	181,759
Charitable activities			
Charitable Activities	32,260	-	32,260
Other funding activities	<u>1,213</u>	<u>-</u>	<u>1,213</u>
Total	120,393	94,839	215,232
 EXPENDITURE ON			
Raising funds	2,723	300	3,023

FREIGHTLINERS FARM LIMITED

**NOTES TO THE FINANCIAL STATEMENTS - continued
FOR THE YEAR ENDED 30 SEPTEMBER 2021**

11. COMPARATIVES FOR THE STATEMENT OF FINANCIAL ACTIVITIES FOR 30 SEPT 2020 - continued

	Unrestricted fund £	Restricted fund £	Total funds £
Charitable activities			
Community Support	12,996	52,804	65,800
Education	19,839	26,897	46,736
Environment	17,146	22,340	39,486
City farming and visitor services	61,664	14,996	76,660
	114,368	117,337	231,705
NET INCOME/(EXPENDITURE)	6,025	(22,498)	(16,473)
 RECONCILIATION OF FUNDS			
Total funds brought forward	38,077	114,173	152,250
	44,102	91,675	135,777
	44,102	91,675	135,777

12. KEY MANAGEMENT PERSONNEL

Key Management Personnel is considered to be the CEO. Her remuneration was £33,686 for the year ended 30th September 2021. (30th September 2020 - £33,699)

FREIGHTLINERS FARM LIMITED

**NOTES TO THE FINANCIAL STATEMENTS - continued
FOR THE YEAR ENDED 30 SEPTEMBER 2021**

13. TANGIBLE FIXED ASSETS

	Short leasehold £	Fixtures and fittings £	Totals £
COST			
At 1 October 2020 and 30 September 2021	<u>95,922</u>	<u>65,138</u>	<u>161,060</u>
DEPRECIATION			
At 1 October 2020	42,752	32,576	75,328
Charge for year	<u>1,918</u>	<u>2,607</u>	<u>4,525</u>
At 30 September 2021	<u>44,670</u>	<u>35,183</u>	<u>79,853</u>
NET BOOK VALUE			
At 30 September 2021	<u>51,252</u>	<u>29,955</u>	<u>81,207</u>
At 30 September 2020	<u>53,170</u>	<u>32,562</u>	<u>85,732</u>

14. STOCKS

	30.9.21	30.9.20
	£	£
Finished goods	<u>330</u>	<u>330</u>

15. DEBTORS: AMOUNTS FALLING DUE WITHIN ONE YEAR

	30.9.21	30.9.20
	£	£
Trade debtors	15,593	23,277
Prepayments and accrued income	<u>4,445</u>	<u>6,969</u>
	<u>20,038</u>	<u>30,246</u>

FREIGHTLINERS FARM LIMITED

**NOTES TO THE FINANCIAL STATEMENTS - continued
FOR THE YEAR ENDED 30 SEPTEMBER 2021**

16. CREDITORS: AMOUNTS FALLING DUE WITHIN ONE YEAR

	30.9.21	30.9.20
	£	£
Trade creditors	5,722	5,469
Social security and other taxes	8,596	2,961
Other creditors	2,160	639
Accrued expenses	5,060	2,160
	21,538	11,229
	21,538	11,229

17. ANALYSIS OF NET ASSETS BETWEEN FUNDS

	Unrestricted fund	Restricted fund	30.9.21 Total funds	30.9.20 Total funds
	£	£	£	£
Fixed assets	29,955	51,252	81,207	85,732
Current assets	37,834	35,914	73,748	61,274
Current liabilities	(21,538)	-	(21,538)	(11,229)
	46,251	87,166	133,417	135,777
	46,251	87,166	133,417	135,777

FREIGHTLINERS FARM LIMITED

**NOTES TO THE FINANCIAL STATEMENTS - continued
FOR THE YEAR ENDED 30 SEPTEMBER 2021**

18. MOVEMENT IN FUNDS

Analysis of Restricted Reserves carried forward as at 30th September 2021

	30.9.2021	30.9.2020
	£	£
City Bridge Trust	818	776
Cripplegate Trust	3,797	-
LBI Children Services	(883)	1,028
LBI Local Initiatives	2,000	2,000
Mercers Trust	225	228
Section 106	-	1,914
	5,957	5,946
Fixed Asset Fund	81,207	85,732
Restricted Funds carried forward - 30th Sept 2021	87,164	91,678

19. RELATED PARTY DISCLOSURES

There were no related party transactions in the year ended 30th September 2021. (30th September 20 - Nil).

FREIGHTLINERS FARM LIMITED

**DETAILED STATEMENT OF FINANCIAL ACTIVITIES
FOR THE YEAR ENDED 30 SEPTEMBER 2021**

	30.9.21 £	30.9.20 £
INCOME AND ENDOWMENTS		
Grants and Donations		
Gift aid	-	4,445
Grants and Donations	191,821	176,307
Other Income	-	1,007
	<hr/>	<hr/>
	191,821	181,759
Other funding activities		
Other Trading Income	-	1,213
Charitable activities		
Income from provision of goods and services	20,842	32,260
	<hr/>	<hr/>
Total incoming resources	212,663	215,232
 EXPENDITURE		
Raising donations and legacies		
Fundraising Costs	422	778
Other trading activities		
Bad debts	-	2,245
Charitable activities		
Salaries	114,009	139,914
COG for Trading	2,010	10,256
Premises Costs	5,011	3,101
General Admin	403	-
Other Support Costs	19,964	18,575
	<hr/>	<hr/>
	141,397	171,846
Support costs		
Management		
Wages	40,314	19,359
Carried forward	40,314	19,359

This page does not form part of the statutory financial statements

FREIGHTLINERS FARM LIMITED

**DETAILED STATEMENT OF FINANCIAL ACTIVITIES
FOR THE YEAR ENDED 30 SEPTEMBER 2021**

	30.9.21	30.9.20
	£	£
Management		
Brought forward	40,314	19,359
Premises Costs	13,222	12,502
Insurance	560	2,406
Professional Fees	2,173	5,720
Other Support Costs	14,035	14,689
	<u>70,304</u>	<u>54,676</u>
Governance costs		
Independent Examiners Fees	2,900	2,160
	<u>215,023</u>	<u>231,705</u>
Total resources expended		
	<u>(2,360)</u>	<u>(16,473)</u>

This page does not form part of the statutory financial statements

FREIGHTLINERS FARM LIMITED

England & Wales - Charity number 1014216

Accounts

REGISTERED COMPANY NUMBER: 02740034 (England and Wales)
REGISTERED CHARITY NUMBER: 1014216

**REPORT OF THE TRUSTEES AND
FINANCIAL STATEMENTS FOR THE YEAR ENDED 30 SEPTEMBER 2020
FOR
FREIGHTLINERS FARM LIMITED
(A COMPANY LIMITED BY GUARANTEE)**

Prestons & Jacksons Partnership LLP
364 - 368 Cranbrook Road
Ilford
Essex
IG2 6HY

FREIGHTLINERS FARM LIMITED

**CONTENTS OF THE FINANCIAL STATEMENTS
FOR THE YEAR ENDED 30 SEPTEMBER 2020**

	Page
Report of the Trustees	1 to 12
Independent Examiner's Report	13
Statement of Financial Activities	14
Balance Sheet	15 to 16
Notes to the Financial Statements	17 to 26
Detailed Statement of Financial Activities	27 to 28

FREIGHTLINERS FARM LIMITED
REPORT OF THE TRUSTEES
FOR THE YEAR ENDED 30 SEPTEMBER 2020

The trustees who are also directors of the charity for the purposes of the Companies Act 2006, present their report with the financial statements of the charity for the year ended 30 September 2020. The trustees have adopted the provisions of Accounting and Reporting by Charities: Statement of Recommended Practice applicable to charities preparing their accounts in accordance with the Financial Reporting Standard applicable in the UK and Republic of Ireland (FRS 102) (effective 1 January 2019).

FREIGHTLINERS FARM LIMITED

REPORT OF THE TRUSTEES FOR THE YEAR ENDED 30 SEPTEMBER 2020

OBJECTIVES AND ACTIVITIES

Objectives and aims

A summary of the objects of the charity as set out in its governing document

The objects of the charity are:

- Improve quality of life particularly for those most in need;
- Promote community participation, education and skills development;
- Promote caring, nurturing and respect for others, the natural and built environment and all living things within the London Boroughs of Islington, Hackney, Haringey, Camden and their environs.

The charity's aims including the changes or differences it seeks to make through its activities.

The charity aims to achieve the above objectives by means of:

- associating with the local authorities, voluntary organisations and inhabitants in a common effort to provide facilities in the interest of social welfare for recreation and other leisure time occupations;
- providing learning opportunities covering agriculture, horticulture, home crafts, country life, the natural environment and related subjects;
- educating people in the care and consideration for all animals particularly animals in need of care and protection. For these purposes to care for and exhibit animals in common agricultural and domestic use and rare breeds of farm animals so that the public will have a greater awareness of and appreciation for such animals;
- providing a rural type of outdoor environment in the inner city which enables urban people to access a little bit of the countryside; and
- demonstrating social, economic and environmental sustainability through modeling of practices, use of technology, fair access, enterprise and involvement.

In setting our objectives and planning our activities, the Trustees have given careful consideration to the Charity Commission's guidance on public benefit.

Summary of the main activities of the charity in relation to its objects

The diverse range of activities which are carried out by the farm include project work, commissioned services, social enterprise and ongoing development work. In pursuit of its stated objectives, the charity's activities can be classified according to the aims of individual pieces of work as follows:

- Community support by providing facilities in the interest of social welfare for therapy, recreation and other leisure time occupations;
- Education by providing training and learning opportunities;
- Environmental awareness by providing facilities to improve appreciation, consideration and care for all animals and their habitats; and
- Social enterprise by providing unique opportunities for local people, developing educational food programmes and supplying local goods and services in an accessible manner and at a reasonable cost.

FREIGHTLINERS FARM LIMITED

REPORT OF THE TRUSTEES FOR THE YEAR ENDED 30 SEPTEMBER 2020

ACHIEVEMENT AND PERFORMANCE

2019-20 was a year of two halves. From October 2019 to February 2020 it was a winter full of preparations for a new season with renovation, new initiatives, new Trustees in training and the prospect of an exciting spring and summer season full of people, learning, animals, plants, wellbeing and growth. The cafe served great food, the animals entertained, listened and educated and the garden provided food, nature and bright year round blooms. We celebrated with the annual Winter Fair, one of the busiest yet, welcomed new school groups for regular learning sessions, took part in an artists project for the Sony World Photography Exhibition and completed the renovation of our wildlife pond and orchard walk.

At the end of February 2020 we began to recognise that the novel coronavirus was heading towards the UK and some of our activities were likely to be affected. By the end of March it became clear that measures required to control the transmission of SARS-CoV-2 and the COVID-19 pandemic would have a severe impact on the farm's ability to deliver its usual outcomes and services, particularly during the farm's busiest season. Following a period of closure required by the Government restrictions in March the farm was able to reopen both to the public and for volunteering, youth and therapeutic sessions in June and July and to remain safely open throughout the Summer. We are extremely grateful to local supporters, regular funders, the London Borough of Islington and the Government for the financial support, understanding and flexibility which enabled the farm to survive and deliver services through this difficult time.

Throughout the year and in spite of the global pandemic the farm continued to offer a programme of targeted, therapeutic and open access activities which aimed to involve our diverse local community in all of the life of the farm. The farm staff team worked hard to adapt and reach people in new ways with decreased time and resources and significantly increased safety regulation. The Trustees are hugely grateful to the CEO and staff for their extra hard work and contributions during this time. What this year reinforced, when we have all been restricted in our access to space and social connections is the importance of urban green spaces and community organisations like the farm for everyone's well-being and quality of life. The farm staff, volunteers and Trustees remain committed to ensuring these benefits are available to our community in the months and years to come.

Access to the outdoors, nature and play

Whilst it has been a challenge to deliver since the outbreak of COVID-19 access to green space and spending time outdoors continues to be core to the farm's work and is perhaps more important than ever. During the year the farm continued to make improvements to the space in order that it provides a safe, welcoming and physically accessible space for everyone. During the lockdown restrictions the farm staff endeavoured to support as much access to the benefits of the farm as possible in a COVID-19-safe manner. Local people reported that small things like ensuring the animals were in the paddocks for local people to see on their daily exercise, a smile from the staff member at the gate when they passed and posting photographs and clips on social media made a big difference to people's feelings of wellbeing and reduced their isolation.

"We looked at the chickens as we walked past, it was the one thing to look forwards to everyday" Local mum with young child after the first lockdown period

In order to provide access to those who were unable to attend the farm during the lockdown period and through the ongoing global COVID-19 pandemic the farm established new remote ways of reaching and connecting people including video conference calls, social media updates, newsletters, plant sales, plant and produce giveaways and family activity packs to pick up from the farm gate. The farm even hosted its annual Easter Egg Hunt online with eggs hidden around the farm to seek whilst discovering what a day in the life of the farm during lockdown was like.

FREIGHTLINERS FARM LIMITED

REPORT OF THE TRUSTEES FOR THE YEAR ENDED 30 SEPTEMBER 2020

Between October 2019 and March 2020 the farm provided a free and open access space and hosted an estimated 15,000 visits. Whilst the farm was closed to visitors between 20th March and 10th July 2020 due to government restrictions, for the remainder of the period through to September 30th 2020 through the use of an online booking tool, one way system and staff greeting visitors on entry, we were pleased to still be able to offer socially distanced public access. During this period 550 families (920 adults and 700 children) were facilitated to visit. Families were grateful to be able to return to the farm - or visit for the first time having discovered the farm during local walks. Advanced booking and staff support enabled the farm to offer time scheduled access for visitors and we received feedback that the extra physical space to explore the farm offered a feeling of tranquility at a much needed time in our community.

"It's great to have a space where we can go and feel relaxed and not have to worry about how close we are to other families" Farm Visitor

Children enjoyed discovering nature and the outdoors and being able to explore.

"I found a tiny frog" Young Visitor and on a return visit "I found another frog I think it is grown up now its big"

As restrictions lifted further on Bank Holiday Monday 31st August, the farm welcomed The Butterfly Theatre Company to the paddock where they performed an open air production of A Midsummer Night's Dream. Three performances took place outdoors in a socially-distant setting. It was a successful event bringing people together safely on the farm, creating access for members of the public and it was great to be able to share the theatre with our young people who had a special free performance.

During a typical spring and summer season the farm reaches many children from across Islington and the wider London area enabling them to have unique and exciting learning experiences this year, before schools were forced to close due to COVID-19, only 340 children were able to visit for guided sessions - including a tour of the farm and hands on workshops. In previous year, we would have welcomed more than 2000 children during the same season and so COVID-19 had a significant effect on the farm education programme.

Children and young people's involvement

26 young people took part in weekly sessions as part of London Borough of Islington's Recreation and Adventure Programme. This programme included

- One off taster sessions in the various aspects of the farm including baking and running the cafe, landscape and garden design, construction, gardening, crafts and animal care.
- An introduction to all aspects of running a city farm over the course of 12-24 weeks with progression to ongoing volunteering. Regular young people also created a fundraising video and helped establish a SpaceHive campaign to rebuild the classroom.
- Work experience placements supporting college and university programmes.

"Thank you for writing me such an excellent reference it really did help me to get into the Universities I am aspiring to go to"- Young Volunteer Applying to Vet College

FREIGHTLINERS FARM LIMITED

REPORT OF THE TRUSTEES FOR THE YEAR ENDED 30 SEPTEMBER 2020

Through the programme the young people gained practical skills in animal care, construction, garden design, knowledge of plants, animals and the environment and were encouraged to be creative, thoughtful and self-aware. They were challenged to overcome barriers to learning and personal development and to work as a team and independently in pursuit of shared goals. They gained key skills for life and employment including communication, leadership and resilience.

"I'd really like a job like this working with animals and being outdoors its great"- Young Volunteer

Hands on learning courses for local schools provided more in-depth animal care and farming based education and enrichment for 19 young people with special educational needs and 30 primary school children. Through these programmes the children and young people have broadened their horizons and learned in different ways allowing pupils who struggle with classroom learning to excel and gain confidence. All of the children and young people gained subject based and key skills and some received nationally recognised accreditation for their learning. The animals provide great incentive for pupils to learn and to complete the tasks allocated to them successfully. Focusing on achievement the participants gain confidence, self-esteem and engage with learning.

Through work experience placements young people build skills in their chosen field of work and gain a valuable taster of working life. As part of this the farm aims to provide young people with a stepping-stone to understanding the expectations of employers and the responsibilities of workers and a chance to practice skills for work in a supported environment.

As a result of participation in young farmers activities

- 1 young person progressed to veterinary college
- 2 young people progressed to a higher level of study in animal care and management
- 8 young people gained accreditation for their learning / volunteering on the farm through Duke of Edinburgh Awards
- All young people gained subject based skills and knowledge and transferable and key skills including teamwork, self-management and communicating with a range of different people. - All young people were observed to have increased confidence.

"Usually when I have school I know I get through the week and then Saturday and Sunday is the Farm and being around the animals" - Young Farmers Club Member

Young people were once again able to get involved and hands on in the major garden and farm developments and contribute to lasting physical changes to the farm however in the latter half of the year activity was curtailed due to the COVID-19 lockdown and then the need for social distancing. Young farmers were proud of their achievements and enjoyed the recognition from farm visitors especially on reopening in the summer. Inclusion in farm life and particularly significant site developments provides young people with a sense of ownership and care for the farm and other community spaces. Young people are encouraged to get involved in all aspects of the farm from contributing ideas to site development to fundraising and advocating for the role of the farm in our community. This year the young people also supported community outreach during the restrictions over the summer helping to prepare activity packs, maintain social media updates and take part in online get togethers. Our regular young farmers were very happy to be able to get back to the farm, enjoy being with the animals and in an outdoor space after 4 months of lockdown.

"When the coronavirus and Jockdown happened I missed the fann a Jot..... I thought I could survive and I missed it a Jot. It's relieffrom boredom..... "- Long-tenn Young Volunteer

FREIGHTLINERS FARM LIMITED

REPORT OF THE TRUSTEES FOR THE YEAR ENDED 30 SEPTEMBER 2020

Inclusive Volunteering and Farming Activities

Through volunteering and farming activities people can get more involved with farm life and help to provide the facilities, activities and benefits of the farm to others. This year 40 adults took part in volunteering and farming group activities alongside 26 young people. Participation in farming and gardening activities increased people's physical activity levels, provided opportunities to gain and practice skills and spend time in a tranquil outdoor space. At the start of the year the farm continued to develop our opportunities for people less able to take on regular volunteering or supported volunteering roles by delivering a weekly drop-in farming session with a variety of lighter farm-based activities including seed sowing, potting on, painting and small animal care and some out of usual hours gardening for people needing a bit quieter space. Unfortunately these sessions were limited by the social distancing requirements and need for vulnerable people to shield. However as we returned to a position of opening the farm worked with the local authority and other support organisations to provide opportunities for more vulnerable people and their families to get outdoors and be active in a safe and quiet space. Such opportunities included reserved slots for referred vulnerable people and their families to access the farm, individual visits and supported volunteering spaces for vulnerable members of the farm community. Over the year through the programme of supported volunteering and farming activities 26 people with disability and/or physical or mental health issues participated in farming activities and their local community and the farm was able to maintain contact and support for all of our regular participants throughout the year. Thanks to the Mercers Trust for their support in delivering and adapting our programme of supported involvement for more vulnerable members of the community in the farm during the year.

"I love coming to the farm and working with the animals, they are my friends" Volunteer

With support from City Bridge Trust and the Mayor of London's Greener Cities Fund we have been able to continue with the farm and gardens development and to involve all of the farm's regular volunteers and participants. Our regular volunteers have been joined by teams from locally based companies and members of the Good Gym who have helped to provide significant person power (around 150 people over the year) to get through some of the heavier tasks. Working alongside our regular volunteers and young people makes connections between individuals who otherwise would not meet, increases understanding of others' lives and opens up possibilities. We very much missed our regular teams in 2020 but were glad of the support that 16 Good Gym volunteers were able to provide when volunteering was safe in May and June helping to set up the farm for reopening following the lockdown.

Site Developments and Improvement

Work on the yard and garden developments continued with new central beds installed in the ornamental garden and considering the need for increased space and routes around the farm the developments and the schedule of works were adjusted to provide a one-way route on reopening. Old concrete render was recycled into replica stone walling and more of the metal work from the barn animal housing was repurposed to create archways and supports for climbing plants. The young people particularly enjoyed helping to create sculptures and learning about welding and metal work. Over the summer visitors were thrilled with exploring the new garden and space and seeing the work that had taken place since the winter.

"The farm looks amazing it is so great to be able to come and see how much people have contributed and to watch the progress over the last few years" - Regular Visitor

FREIGHTLINERS FARM LIMITED

REPORT OF THE TRUSTEES FOR THE YEAR ENDED 30 SEPTEMBER 2020

The Natural Workshop began in January. This was a new project aimed at renovating areas of the farm which no longer functioned and/or had become derelict, creating a full circuit of the farm, providing opportunities for children and families to explore nature and giving space to spend time in a woodland shade area in the hot summer began in January. The first stage was the reestablishment and planting of the wildlife pond and garden, pruning of our heritage apple tree avenue and clearance of the derelict composting area. As always the whole farm team got involved with the tasks of pruning, chipping and creating stakes and poles for use in the garden and for animal housing. Reusing materials to create a new pond edge and setting up insect and mini-beast habitats. Then work started on a new pig habitat that would be a key stopping point for families on the new farm trail. With the COVID-19 lockdown and reduced public opening hours members of the public were also able to see the pigs from the park when out on their daily exercise.

Growing Foods and Flowers

Whilst the garden construction continued over the year, in the completed beds there were flowers a plenty with many new and unusual species and varieties in place. Autumn colours continued right through until the frosts in January and some unusual early flowering varieties brightened the winter months. It was a huge shame that as we entered the spring and through the early summer when the new botanic garden really came into bloom the farm, like the whole country, entered lockdown. To share the lovely blooms and create a resource for the future, staff and volunteers working remotely started a flower blog- identifying the flowers around the garden and the time of year they bloom. This also provided an opportunity to link to information about the plants on the farm available through the websites of the RHS and Kew supporting interested volunteers, visitors and farm friends to develop their horticulture and plant knowledge and gain confidence in gardening.

The garden team began work on sowing seeds and propagating plants from the garden to share with our community in the autumn and were hard at work sowing and potting on tomato and chilli plants for sale at the start of the pandemic. This provided an opportunity to continue to share the garden and gardening with local people through plant sales and give aways at the farm gate. Many gardens and window sills in the surrounding area became adorned with plants reminiscent of the farm.

"As I walk to work each day it seems that every other front garden has an ornamental ginger, elephants ear or other plant I recognise from the farm on display." Farm Staff Member and Local Resident

The vegetable garden also supplied a route to maintaining community links, soft fruits, salad leaves, courgettes, tomatoes, chilli and beans grown in the garden were harvested regularly and added to the farm shop at the gate or bagged for the Ringcross Food Bank. Fruits and vegetables were used to create exciting preserves including Mulled Victoria Plum Jam, Tromboncino Chutney and Rhubarb Apple and Gin Jelly.

"I enjoy popping past the plants and produce stall throughout the week to see what's new. I have bought lots of great plants for my balcony and very much enjoyed the gooseberries." Local resident

Volunteers and visitors continued to benefit from gardens and gardening activities, enjoying the peace, tranquility and beauty of the space and making a close connection with nature through growing plants and observing the associated wildlife.

FREIGHTLINERS FARM LIMITED

REPORT OF THE TRUSTEES FOR THE YEAR ENDED 30 SEPTEMBER 2020

Rare Breeds and Other Animals

As farm developments continued and space limited we did not breed the large animals for spring 2020 but plans were afoot for new ducks, geese and bees in the summer however with the uncertainty of the pandemic the plans were put on hold. However the farm did welcome a number of unexpected arrivals some needing new homes as a result of the pandemic and changes in people's circumstances. We welcomed Nala and Flops the rabbits to stay from Coram Fields Playground whilst their playworkers and carers were furloughed and two Poland chicks mistakenly taken on as lockdown pets. Our Sebright Bantams were the only animals on the farm this year to raise a family and were very cute additions to our newsletter updates. Finally the Hackney One (Little Lambsie) arrived in the back of a police van after being found wandering the streets of Hackney. Whilst we had no long term space available we were able to look after him for a month whilst finding him a new home at a Sanctuary in Devon.

Meanwhile our long term residents enjoyed being out in the fields each day and the extra attention they received from staff but were soon bored with seeing only two people for weeks on end and were happy to see visitors and volunteers back to provide them with some entertainment. The farm staff continued to share their exploits with our friends on social media, volunteer Zoom calls and through a regular newsletter including Gurtude, Poppy, Wilfred and Owen's sterling efforts in the "2.6 Challenge" charity fundraiser for the farm.

Fundraising and Social Enterprise

The year of enterprise and fundraising followed a similar story to other aspects of farm life this year with the café buzzing and busier than ever throughout the autumn and winter. The new seating area providing customers with space to enjoy the relaxing environment and great food whilst the farm benefited from an increased income. Our winter fair was also increasing in popularity and sales of trees, gifts and farm preserves were beginning to make a good contribution to the farms funding base. However in February 2020 with the start of the COVID-19 pandemic the farm like many organisations faced a funding crisis.

During the national lockdown income dropped on average £10,000 a month with the loss of café sales, income from school visits and corporate volunteer days. Thanks to the generous support of our local community we were able to increase funds raised from donations online and participation in national fundraising events including the "2.6 Challenge". The farm site staff and animals took on a series of challenges all in Cow and Pig Onesies (people only). This included, finding 26 minibeasts, picking 2.6kg of garden leaves (donated to the Ringcross Food Bank); completing 26 lengths of the field; bagging 26 bags of manure each and doing 26 straw bale step ups.

The farm also worked quickly to adjust plans and enterprise activity in the garden. The farm has always sold plants when available, but during lockdown we turned our autumn and winter propagation over almost entirely to provision of plants for people to grow at home. This was hugely popular as many people were looking to gardening to provide some access to nature and had no access to plants locally. We established a no contact pay what you can plant pick up point at the gate and stepped up propagation of plants especially easy to grow fruit and vegetables for later in the season. Our plant stall continued throughout the period when the farm opened up, and it was enormously appreciated by the local community, both in terms of quality and variety. We were able to set up an online farm shop enabling people to pay online by card and we sold over 1,000 plants to the end of September 2020 and yielded £2,500.

The farm increased social media presence supported the farm to share its work with the community and funders. We were lucky to have two volunteers help us do this during the year. During the Winter months, Joel Davies, documented the life of the farm in pictures, as part of a project looking at greenification within an urban environment. His photograph series "We Reap what we Sow" featured in the Sony World Photograph Award Exhibition which ran online in April 2020. During the year film journalist Katy McGahan also recorded the life of the farm creating a video of the farms work which featured as part of the London Farms and Gardens Association's Virtual Harvest Festival in September

FREIGHTLINERS FARM LIMITED

REPORT OF THE TRUSTEES FOR THE YEAR ENDED 30 SEPTEMBER 2020

We were also very grateful to receive emergency funding support through the London COVID-19 Response from Islington Giving and additional emergency funding from the City Bridge Trust. This together with Government support enabled the farm to mitigate the significant loss of income and retain experienced staff during the extremely difficult 6 months from March to September 2020.

Impact of the COVID-19 Pandemic

The global pandemic arising from COVID-19 had an immediate and significant impact across all aspects of the farm's operations during the course of the year.

From 20th March 2020, following the UK governments lockdown restrictions, the farm closed to the public, in person volunteer engagement was seriously curtailed such that the farm had to operate with no regular volunteers through to 8th July. During this period, the cafe remained closed and did not reopen for the remainder of the year thus causing a significant loss of revenues for the farm.

We utilised the UK Government's furlough scheme to reduce staffing by 50% such that we could only use two people each day to complete essential animal care, gardening and site maintenance. With a reduced staff team and without our regular volunteers, who do so much to help run the farm and gardens, maintaining basic operations was challenging.

During this time we sought to use remote and video conferencing technologies to engage with volunteers, and service users from the community

Following government relaxation of lockdown restrictions, from 10th July 2020, we trialled a limited and strictly controlled farm re-opening program during weekends. Using a timed booking system we enabled a limited number of households to access the farm. To do so there were many practical considerations that the farm needed to address to ensure everyone's safety such as necessary PPE, use of shared equipment and spaces, break and rest facilities for staff and volunteers, people's individual vulnerabilities and the availability of staff to deliver support and services with a significantly reduced income.

As at 30th September 2020, the farm continued to be subject to limited public opening and ongoing government COVID-19 public health restrictions and regulations.

FINANCIAL REVIEW

Financial position

The Statement of Financial Activities shows a deficit of £16,473 (2019: deficit £648).

Fund balances at the year end stood at £135,777 (2019: £152,250) of which £44,102 (2019: £38,077) was unrestricted and £91,675 (2019: £114,173) was restricted.

FREIGHTLINERS FARM LIMITED

REPORT OF THE TRUSTEES FOR THE YEAR ENDED 30 SEPTEMBER 2020

FINANCIAL REVIEW

Reserves policy

The management committee has established a policy whereby the restricted reserves equate to the net book value of certain company tangible fixed assets and that all other reserves are classified as unrestricted reserves. The Management Committee maintains the ambition to establish reserves of 3-6 months running costs, as recommended by the Charity Commission however the COVID-19 pandemic resulted in a depletion of reserves. The Management Committee is pleased that the farm has increased its unrestricted funds balance during the year but given the need for continuity of service continues to manage these funds to ensure that the farm is an active, developing and vibrant organisation which meets the needs of its beneficiaries now and in the future.

Availability and adequacy of assets of each of the funds

The Management Committee is satisfied that the charity's assets in each fund are available and adequate to fulfill its obligations in respect of each fund.

FUTURE PLANS AND DEVELOPMENTS

The farm's immediate focus is to exit the COVID-19 pandemic as a going concern and to support our community through the challenges it face now and in the coming years. In addition the farm looks to accelerate it's plans to improve the farm infrastructure covering basic site maintenance, renovation, and development works. Over the coming year the focus is on the completion of the natural workshop project and progressing classroom renovations to create a multi-use space with an outdoor area.

We will build on work with local partners to provide routes for local people to connect, challenge social isolation and benefit from the farm environment and services.

We will continue to seek funding for our work through the mixed base of social enterprise, individual donor fundraising, appropriate grant funding and commissioned service provision. We have a clear aim of maintaining a good balance of funding streams which best meet the needs of the farm as an organisation and the needs of the local community.

The farm is an experienced and established member of the city farming movement we are passionate supporters of the value city farms and gardens have in society and in support of those who are vulnerable and disadvantaged. In a fast changing world we recognise the importance of adapting to new circumstances, learning and changing to meet the needs of our beneficiaries. London has a strong and dedicated network of farms and gardens who are skilled, innovative and experienced in their role. We want to ensure that we continue to build on this strength through partnership work and knowledge and skills sharing across city farms in London and the UK as a whole and to ensure that Freightliners is the best possible city farm for our local community.

STRUCTURE, GOVERNANCE AND MANAGEMENT

Nature of the Governing Document and constitution of the charity

The charity is controlled by its governing document, a deed of trust, and constitutes a limited company, limited by guarantee, as defined by the Companies Act 2006.

The organisation is a charitable company limited by guarantee, incorporated on 14th August 1992. The company was established under a Memorandum of Association which established the objects and powers of the charitable company and is governed under its Articles of Association. In the event of the company being wound up, each member is required to contribute an amount not exceeding £1.

FREIGHTLINERS FARM LIMITED

REPORT OF THE TRUSTEES FOR THE YEAR ENDED 30 SEPTEMBER 2020

STRUCTURE, GOVERNANCE AND MANAGEMENT

The organisational structure of the charity and how decisions are made.

Freightliners Farm Limited has a Management Committee who meet at least five times a year and is responsible for the strategic direction and policy of the charity. From March 2020, the Management Committee met monthly (using remote video conferencing) to provide additional oversight and guidance in light of the rapidly evolving COVID pandemic having a significant impact on the farm's operations and to ensure that the welfare of staff was monitored. At present the Committee has five members from a variety of professional backgrounds relevant to the work of the charity including people from the local area. A finance sub-committee consisting of the Chief Executive, Chair, Treasurer and at least one other member of the Management Committee are delegated to scrutinise routine financial management and report to the Committee.

The major risks to which the charity is exposed and reviews and systems mitigate

The trustees have a duty to identify and review the risks to which the charity is exposed and to ensure appropriate controls are in place to provide reasonable assurance against fraud and error.

The management committee has conducted its own review of the major risks to which the charity is exposed and systems have been established to mitigate those risks. Significant external risks to funding have led to the development of a strategic plan which will allow for the diversification of funding and activities. Internal risks are minimised by the implementation of procedures for authorisation of all transactions and projects and to ensure consistent quality of delivery for all operational aspects of the charitable company. These procedures are periodically reviewed to ensure that they still meet the needs of the charity.

REFERENCE AND ADMINISTRATIVE DETAILS

Registered Company number

02740034 (England and Wales)

Registered Charity number

1014216

Registered office

Sheringham Road
N7 8PF

Trustees

O.S Robinson - Management Consultant

N.McMinn - Accounts Manager - appointed 16 April 2020

M.Rowe - Architect - appointed 16 April 2020

P.MacIntyre - Solicitor - appointed 16 April 2020

L J Bingham - Charity Manager - resigned 19 September 2020

H C Gamper - Consumer Protection - resigned 31 October 2019

E Gibson - Project Manager - resigned 27 January 2020

C Lawson - Programme Manager/Treasurer - resigned 19 September 2020

R A D Price - Economist/ Chair - resigned 19 September 2020

Company Secretary:

E McAllister

Chief Executive Officer:

E McAllister

FREIGHTLINERS FARM LIMITED

**REPORT OF THE TRUSTEES
FOR THE YEAR ENDED 30 SEPTEMBER 2020**

REFERENCE AND ADMINISTRATIVE DETAILS

Independent Examiner

A. Patel BA(Hons) FCA BFP
ICAEW
Prestons & Jacksons Partnership LLP
364 - 368 Cranbrook Road
Ilford
Essex
IG2 6HY

This report has been prepared in accordance with the special provisions of Part 15 of the Companies Act 2006 relating to small companies.

Approved by order of the board of trustees on 23 September 2021 and signed on its behalf by:



Trustee / Director:
Mr P. Macintyre

Trustee / Director:
Mr N. Mcminn

**INDEPENDENT EXAMINER'S REPORT TO THE TRUSTEES OF
FREIGHTLINERS FARM LIMITED**

Independent examiner's report to the trustees of Freightliners Farm Limited ('the Company')

I report to the charity trustees on my examination of the accounts of the Company for the year ended 30 September 2020.

Responsibilities and basis of report

As the charity's trustees of the Company (and also its directors for the purposes of company law) you are responsible for the preparation of the accounts in accordance with the requirements of the Companies Act 2006 ('the 2006 Act').

Having satisfied myself that the accounts of the Company are not required to be audited under Part 16 of the 2006 Act and are eligible for independent examination, I report in respect of my examination of your charity's accounts as carried out under section 145 of the Charities Act 2011 ('the 2011 Act'). In carrying out my examination I have followed the Directions given by the Charity Commission under section 145(5) (b) of the 2011 Act.

Independent examiner's statement

I have completed my examination. I confirm that no matters have come to my attention in connection with the examination giving me cause to believe:

1. accounting records were not kept in respect of the Company as required by section 386 of the 2006 Act; or
2. the accounts do not accord with those records; or
3. the accounts do not comply with the accounting requirements of section 396 of the 2006 Act other than any requirement that the accounts give a true and fair view which is not a matter considered as part of an independent examination; or
4. the accounts have not been prepared in accordance with the methods and principles of the Statement of Recommended Practice for accounting and reporting by charities (applicable to charities preparing their accounts in accordance with the Financial Reporting Standard applicable in the UK and Republic of Ireland (FRS 102)).

I have no concerns and have come across no other matters in connection with the examination to which attention should be drawn in this report in order to enable a proper understanding of the accounts to be reached.

A. PATEL

A. Patel BA(Hons) FCA BFP
ICAEW
Prestons & Jacksons Partnership LLP
364 - 368 Cranbrook Road
Ilford
Essex
IG2 6HY

Date: 24/09/21

FREIGHTLINERS FARM LIMITED

**STATEMENT OF FINANCIAL ACTIVITIES
(INCORPORATING AN INCOME AND EXPENDITURE ACCOUNT)
FOR THE YEAR ENDED 30 SEPTEMBER 2020**

	Notes	Unrestricted fund £	Restricted fund £	30.9.20 Total funds £	30.9.19 Total funds £
INCOME AND ENDOWMENTS FROM					
Donations and legacies	2	86,920	94,839	181,759	166,516
Charitable activities	4				
Charitable Activities		32,260	-	32,260	81,902
Other funding activities	3	1,213	-	1,213	8,181
Total		120,393	94,839	215,232	256,599
 EXPENDITURE ON					
Raising funds	5	2,723	300	3,023	7,983
Charitable activities	6				
Community Support		12,996	52,804	65,800	80,928
Education		19,839	26,897	46,736	54,035
Environment		17,146	22,340	39,486	29,480
City farming, visitor services and community cafe		61,664	14,996	76,660	84,821
Total		114,368	117,337	231,705	257,247
NET INCOME/(EXPENDITURE)		6,025	(22,498)	(16,473)	(648)
 RECONCILIATION OF FUNDS					
Total funds brought forward		38,077	114,173	152,250	152,898
TOTAL FUNDS CARRIED FORWARD		44,102	91,675	135,777	152,250

The notes form part of these financial statements

FREIGHTLINERS FARM LIMITED

BALANCE SHEET 30 SEPTEMBER 2020

	Notes	30.9.20 £	30.9.19 £
FIXED ASSETS			
Tangible assets	13	85,732	90,257
CURRENT ASSETS			
Stocks	14	330	330
Debtors	15	30,246	29,146
Cash at bank and in hand		30,698	46,624
		61,274	76,100
CREDITORS			
Amounts falling due within one year	16	(11,229)	(14,107)
		50,045	61,993
NET CURRENT ASSETS			
		135,777	152,250
TOTAL ASSETS LESS CURRENT LIABILITIES			
		135,777	152,250
NET ASSETS			
		135,777	152,250
FUNDS			
	18		
Unrestricted funds		44,099	38,077
Restricted funds		91,678	114,173
		135,777	152,250
TOTAL FUNDS			

The charitable company is entitled to exemption from audit under Section 477 of the Companies Act 2006 for the year ended 30 September 2020.

The members have not required the company to obtain an audit of its financial statements for the year ended 30 September 2020 in accordance with Section 476 of the Companies Act 2006.

The trustees acknowledge their responsibilities for

- (a) ensuring that the charitable company keeps accounting records that comply with Sections 386 and 387 of the Companies Act 2006 and
- (b) preparing financial statements which give a true and fair view of the state of affairs of the charitable company as at the end of each financial year and of its surplus or deficit for each financial year in accordance with the requirements of Sections 394 and 395 and which otherwise comply with the requirements of the Companies Act 2006 relating to financial statements, so far as applicable to the charitable company.

The notes form part of these financial statements

FREIGHTLINERS FARM LIMITED

BALANCE SHEET - continued
30 SEPTEMBER 2020

These financial statements have been prepared in accordance with the provisions applicable to charitable companies subject to the small companies regime.

The financial statements were approved by the Board of Trustees and authorised for issue on 23 September 2020 and were signed on its behalf by:



.....
Trustee/Director:

Mr P. Macintyre



Trustee/Director:-

Mr N. McMinn

The notes form part of these financial statements

FREIGHTLINERS FARM LIMITED

NOTES TO THE FINANCIAL STATEMENTS FOR THE YEAR ENDED 30 SEPTEMBER 2020

1. ACCOUNTING POLICIES

Basis of preparing the financial statements

The financial statements of the charitable company, which is a public benefit entity under FRS 102, have been prepared in accordance with the Charities SORP (FRS 102) 'Accounting and Reporting by Charities: Statement of Recommended Practice applicable to charities preparing their accounts in accordance with the Financial Reporting Standard applicable in the UK and Republic of Ireland (FRS 102) (effective 1 January 2019)', Financial Reporting Standard 102 'The Financial Reporting Standard applicable in the UK and Republic of Ireland' and the Companies Act 2006. The financial statements have been prepared under the historical cost convention.

Income

All income is recognised in the Statement of Financial Activities once the charity has entitlement to the funds, it is probable that the income will be received and the amount can be measured reliably.

Voluntary income is received by way of grants, donations and gifts and is included in full in the Statement of Financial Activities when receivable. Grants, where entitlement is not conditional on the delivery of a specific performance by the charity, are recognised when the charity becomes unconditionally entitled to the grant.

Donated services and facilities are included at the value to the charity where this can be quantified. The value of services provided by volunteers has not been included in these accounts.

Investment income is included when receivable.

Incoming resources from charitable trading activities are accounted for when earned.

Incoming resources from grants, where related to performance and specific deliverables, are accounted for as the charity earns the right to consideration by its performance.

Expenditure and irrecoverable vat

Liabilities are recognised as expenditure as soon as there is a legal or constructive obligation committing the charity to that expenditure, it is probable that a transfer of economic benefits will be required in settlement and the amount of the obligation can be measured reliably. Expenditure is accounted for on an accruals basis and has been classified under headings that aggregate all cost related to the category. Where costs cannot be directly attributed to particular headings they have been allocated to activities on a basis consistent with the use of resources.

Expenditure is recognised on an accrual basis as a liability is incurred. Expenditure includes any VAT which cannot be fully recovered, and is reported as part of the expenditure to which it relates:

Costs of generating funds comprise the costs associated with attracting voluntary income and the costs of trading for fundraising purposes including the charity's shop.

Charitable expenditure comprises those costs incurred by the charity in the delivery of its activities and services for its beneficiaries. It includes both costs that can be allocated directly to such activities and those costs of an indirect nature necessary to support them.

FREIGHTLINERS FARM LIMITED

NOTES TO THE FINANCIAL STATEMENTS-continued FOR THE YEAR ENDED 30 SEPTEMBER 2020

1. ACCOUNTING POLICIES - continued

Expenditure and irrecoverable vat

Governance costs include those costs associated with meeting the constitutional and statutory requirements of the charity and include the audit fees and costs linked to the strategic management of the charity.

All costs are allocated between the expenditure categories of the SoFA on a basis designed to reflect the use of the resource. Costs relating to a particular activity are allocated directly, others are apportioned on an appropriate basis e.g. floor areas, per capita or estimated usage as set out in the notes to the accounts.

Tangible fixed assets

Depreciation is provided at the following annual rates in order to write off each asset over its estimated useful life.

Short leasehold	- 2% on cost
Fixtures and fittings	- 15% on cost

Tangible fixed assets are stated at historical cost less accumulated depreciation and any accumulated impairment losses. Historical cost includes expenditure that is directly attributable to bringing the asset to the location and condition necessary for it to be capable of operating in the manner intended by management.

Stocks

Stocks are valued at the lower of cost and net realisable value, after making due allowance for obsolete and slow moving items.

Taxation

The charity is exempt from corporation tax on its charitable activities.

Fund accounting

Unrestricted funds can be used in accordance with the charitable objectives at the discretion of the trustees.

Restricted funds can only be used for particular restricted purposes within the objects of the charity. Restrictions arise when specified by the donor or when funds are raised for particular restricted purposes.

Designated funds are Unrestricted funds earmarked by the Management Committee for particular purposes.

Further explanation of the nature and purpose of each fund is included in the notes to the financial statements.

FREIGHTLINERS FARM LIMITED

NOTES TO THE FINANCIAL STATEMENTS - continued FOR THE YEAR ENDED 30 SEPTEMBER 2020

1. ACCOUNTING POLICIES - continued

Debtors

Basic financial assets, including trade and other debtors, are initially recognised at transaction price, unless the arrangement constitutes a financing transaction, where the transaction is measured at the present value of the future receipts discounted at a market rate of interest. Such assets are subsequently carried at amortised cost using the effective interest method, less any impairment.

Cash and Cash Equivalents

Cash and cash equivalents are represented by cash in hand, deposits held at call with financial institutions, and other short-term highly liquid investments that mature in no more than three months from the date of acquisition and that are readily convertible to known amounts of cash with insignificant risk of change in value.

Creditors

Basic financial liabilities, including trade and other creditors, loans from third parties and loans from related parties, are initially recognised at transaction price, unless the arrangement constitutes a financing transaction, where the debt instrument is measured at the present value of the future payments discounted at a market rate of interest. Such instruments are subsequently carried at amortised cost using the effective interest method, less and impairment.

Pension costs

The charity operates a defined contribution pension scheme. Contributions payable to the charity's pension scheme are charged to the Statement of Financial Activities in the period to which they relate.

Going concern and Covid-19

Although the Pandemic had had an impact on the Farm, with easing off of lockdown, the Farm was able to carry on its business and trading activities. With the support from the local communities and government, the Board confirmed they have sufficient fundings to operate in the future.

As a result of this, the accounts have been prepared on a going concern basis.

2. DONATIONS AND LEGACIES

	30.9.20	30.9.19
	£	£
Gift aid	4,445	9,914
Grants	176,307	156,602
Other Income	<u>1,007</u>	<u>-</u>
	<u>181,759</u>	<u>166,516</u>

FREIGHTLINERS FARM LIMITED

**NOTES TO THE FINANCIAL STATEMENTS - continued
FOR THE YEAR ENDED 30 SEPTEMBER 2020**

2. DONATIONS AND LEGACIES - continued

Grants received, included in the above, are as follows:

	30.9.20	30.9.19
	£	£
Donations under £1,000	19,468	9,598
LB Islington Green Space and Leisure Division	32,000	32,000
Cripplegate Foundation	9,774	-
LB Islington (Local Initiative Fund)	-	2,975
J&M Douglas	5,000	5,000
L Matlock	10,000	10,000
Mayor of London Greener City Fund	3,930	3,000
LB Islington Children's Services	9,029	8,848
Jack Petchey Foundation	-	500
Mercers Charitable Foundation	-	24,900
Charities Trust	-	4,019
S M Talbot	-	2,000
City Bridge Trust	51,325	30,300
Kristina Martin Charitabel Trust	-	8,900
LB Islington Mayor's Charity	-	14,562
Anonymous	5,000	-
Coronavirus Job Retention Scheme	20,781	-
LB Islington (Hospitality and Leisure Coronavirus Division)	10,000	-
	<u>176,307</u>	<u>156,602</u>

3. OTHER FUNDING ACTIVITIES

	30.9.20	30.9.19
	£	£
Fundraising events	-	8,181
Other Trading Income	<u>1,213</u>	-
	<u>1,213</u>	<u>8,181</u>

FREIGHTLINERS FARM LIMITED

**NOTES TO THE FINANCIAL STATEMENTS - continued
FOR THE YEAR ENDED 30 SEPTEMBER 2020**

4.	INCOME FROM CHARITABLE ACTIVITIES	30.9.20	30.9.19
	Activity	£	£
	Grants	32,260	81,902
		<u> </u>	<u> </u>
	Grants received, included in the above, are as follows:		
		30.9.20	30.9.19
		£	£
	CAFE Income	18,194	52,474
	Education Income	1,848	15,618
	Other Farm Income	12,218	13,810
		<u> </u>	<u> </u>
		32,260	81,902
		<u> </u>	<u> </u>
5.	RAISING FUNDS		
	Raising donations and legacies		
		30.9.20	30.9.19
		£	£
	Fundraising Costs	778	2,630
		<u> </u>	<u> </u>
	Other trading activities		
		30.9.20	30.9.19
		£	£
	Bad debts	2,245	5,353
		<u> </u>	<u> </u>
	Aggregate amounts	3,023	7,983
		<u> </u>	<u> </u>

FREIGHTLINERS FARM LIMITED

**NOTES TO THE FINANCIAL STATEMENTS - continued
FOR THE YEAR ENDED 30 SEPTEMBER 2020**

6. CHARITABLE ACTIVITIES COSTS

	Direct Costs £	Support costs (see note 7) £	Totals £
Community Support	40,858	24,942	65,800
Education	33,867	12,869	46,736
Environment	28,659	10,827	39,486
City farming, visitor services and community cafe	68,462	8,198	76,660
	<u>171,846</u>	<u>56,836</u>	<u>228,682</u>

7. SUPPORT COSTS

	Management £	Governance costs £	Totals £
Community Support	24,942	-	24,942
Education	10,709	2,160	12,869
Environment	10,827	-	10,827
City farming, visitor services and community cafe	8,198	-	8,198
	<u>54,676</u>	<u>2,160</u>	<u>56,836</u>

8. NET INCOME/(EXPENDITURE)

Net income/(expenditure) is stated after charging/(crediting):

	30.9.20	30.9.19
	£	£
Depreciation - owned assets	4,525	4,526
Independent Examiners Fees	<u>2,160</u>	<u>2,160</u>

FREIGHTLINERS FARM LIMITED

**NOTES TO THE FINANCIAL STATEMENTS-continued
FOR THE YEAR ENDED 30 SEPTEMBER 2020**

9. TRUSTEES' REMUNERATION AND BENEFITS

There were no trustees' remuneration or other benefits for the year ended 30 September 2020 nor for the year ended 30 September 2019.

Trustees' expenses

There were no trustees' expenses paid for the year ended 30 September 2020 nor for the year ended 30 September 2019.

10. STAFF COSTS

	30.9.20	30.9.19
	£	£
Wages and salaries	159,273	150,533
	<u>159,273</u>	<u>150,533</u>

The average monthly number of employees during the year was as follows:

	30.9.20	30.9.19
Engaged on Charitable Activities	5	5
Engaged on administration and management	1	1
	<u>6</u>	<u>6</u>

No employees received emoluments in excess of £60,000.

11. COMPARATIVES FOR THE STATEMENT OF FINANCIAL ACTIVITIES FOR 30 SEPT 2019

	Unrestricted fund £	Restricted fund £	Total funds £
INCOME AND ENDOWMENTS FROM			
Donations and legacies	95,994	70,522	166,516
Charitable activities			
Charitable Activities	81,902	-	81,902
Other funding activities	8,181	-	8,181
Total	<u>186,077</u>	<u>70,522</u>	<u>256,599</u>
EXPENDITURE ON			
Raising funds	7,983	-	7,983
Charitable activities			
Community Support	39,572	41,356	80,928
Education	36,196	17,839	54,035

FREIGHTLINERS FARM LIMITED

**NOTES TO THE FINANCIAL STATEMENTS-continued
FOR THE YEAR ENDED 30 SEPTEMBER 2020**

**11. COMPARATIVES FOR THE STATEMENT OF FINANCIAL ACTIVITIES FOR 30 SEPT 2019
- continued**

	Unrestricted fund £	Restricted fund £	Total funds £
Environment	13,871	15,609	29,480
City farming, visitor services and community cafe	84,654	167	84,821
Total	182,276	74,971	257,247
NET INCOME/(EXPENDITURE)	3,801	(4,449)	(648)

RECONCILIATION OF FUNDS

Total funds brought forward	34,277	118,621	152,898
TOTAL FUNDS CARRIED FORWARD	38,078	114,172	152,250

12. KEY MANAGEMENT PERSONNEL

Key Management Personnel is considered to be the CEO. Her remuneration was £33,699 for the year ended 30th September 2020. (30th September 19 - £30,532)

13. TANGIBLE FIXED ASSETS

	Short leasehold £	Fixtures and fittings £	Totals £
COST			
At 1 October 2019 and 30 September 2020	95,922	65,138	161,060
DEPRECIATION			
At 1 October 2019	40,835	29,968	70,803
Charge for year	1,917	2,608	4,525
At 30 September 2020	42,752	32,576	75,328
NET BOOK VALUE			
At 30 September 2020	53,170	32,562	85,732
At 30 September 2019	55,087	35,170	90,257

FREIGHTLINERS FARM LIMITED

**NOTES TO THE FINANCIAL STATEMENTS - continued
FOR THE YEAR ENDED 30 SEPTEMBER 2020**

14. STOCKS

	30.9.20	30.9.19
	£	£
Finished goods	330	330
	<u> </u>	<u> </u>

15. DEBTORS: AMOUNTS FALLING DUE WITHIN ONE YEAR

	30.9.20	30.9.19
	£	£
Trade debtors	23,277	19,139
Prepayments and accrued income	6,969	10,007
	<u> </u>	<u> </u>
	30,246	29,146
	<u> </u>	<u> </u>

16. CREDITORS: AMOUNTS FALLING DUE WITHIN ONE YEAR

	30.9.20	30.9.19
	£	£
Trade creditors	5,469	5,405
Social security and other taxes	2,961	6,070
Other creditors	639	448
Accrued expenses	2,160	2,184
	<u> </u>	<u> </u>
	11,229	14,107
	<u> </u>	<u> </u>

17. ANALYSIS OF NET ASSETS BETWEEN FUNDS

	Unrestricted	Restricted	30.9.20	30.9.19
	fund	fund	Total	Total
	£	£	funds	funds
Fixed assets	32,562	53,170	85,732	90,257
Current assets	22,766	38,508	61,274	76,100
Current liabilities	(11,229)	-	(11,229)	(14,107)
	<u> </u>	<u> </u>	<u> </u>	<u> </u>
	44,099	91,678	135,777	152,250
	<u> </u>	<u> </u>	<u> </u>	<u> </u>

FREIGHTLINERS FARM LIMITED

**NOTES TO THE FINANCIAL STATEMENTS - continued
FOR THE YEAR ENDED 30 SEPTEMBER 2020**

18. MOVEMENT IN FUNDS

**Analysis of Restricted Reserves carried forward as at 30th
September 2020**

	30.9.2020	30.9.2019
	£	£
City Bridge Trust	776	776
LBI Children Services	1,028	-
LBI Local Initiatives	2,000	2,000
Mercers	225	17,363
Section 106	1,914	3,777
	5,943	23,916
 Total Revenue Restricted Funds	 5,943	 23,916
 Fixed Asset Fund	 85,732	 90,257
 Restricted Funds carried forward - 30th Sept 2020	 91,675	 114,173

19. RELATED PARTY DISCLOSURES

There were no related party transactions in the year ended 30th September 2020. (30th September 19 - Nil).

FREIGHTLINERS FARM LIMITED

**DETAILED STATEMENT OF FINANCIAL ACTIVITIES
FOR THE YEAR ENDED 30 SEPTEMBER 2020**

	30.9.20	30.9.19
	£	£
INCOME AND ENDOWMENTS		
Donations and legacies		
Gift aid	4,445	9,914
Grants	176,307	156,602
Other Income	1,007	-
	181,759	166,516
Other funding activities		
Fundraising events	-	8,181
Other Trading Income	1,213	-
	1,213	8,181
Charitable activities		
Grants	32,260	81,902
Total incoming resources	215,232	256,599
EXPENDITURE		
Raising donations and legacies		
Fundraising Costs	778	2,630
Other trading activities		
Bad debts	2,245	5,353
Charitable activities		
Salaries	139,914	127,160
COG for Trading	10,256	28,258
Premises Costs	3,101	11,565
Other Support Costs	18,575	24,329
	171,846	191,312
Support costs		
Management		
Wages	19,359	23,373
Carried forward	19,359	23,373

This page does not form part of the statutory financial statements

FREIGHTLINERS FARM LIMITED

**DETAILED STATEMENT OF FINANCIAL ACTIVITIES
FOR THE YEAR ENDED 30 SEPTEMBER 2020**

	30.9.20	30.9.19
	£	£
Management		
Brought forward	19,359	23,373
Premises Costs	12,502	10,911
Insurance	2,406	1,508
Professional Fees	5,720	4,025
Other Support Costs	14,689	15,975
	<u>54,676</u>	<u>55,792</u>
Governance costs		
Independent Examiners Fees	2,160	2,160
	<u>2,160</u>	<u>2,160</u>
Total resources expended	<u>231,705</u>	<u>257,247</u>
Net expenditure	<u>(16,473)</u>	<u>(648)</u>

This page does not form part of the statutory financial statements